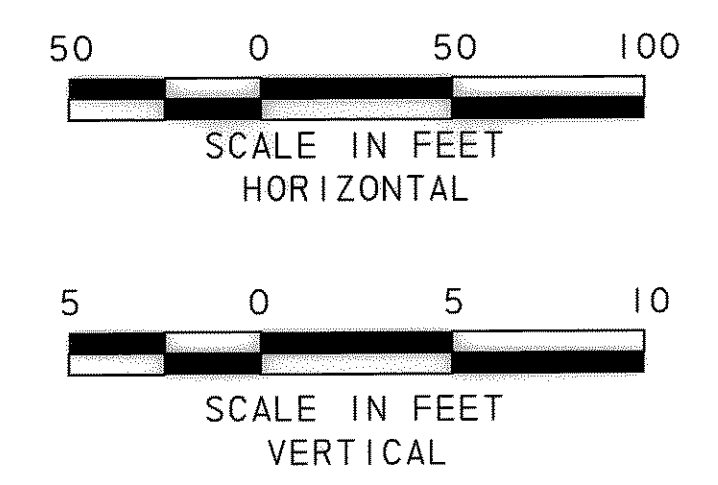
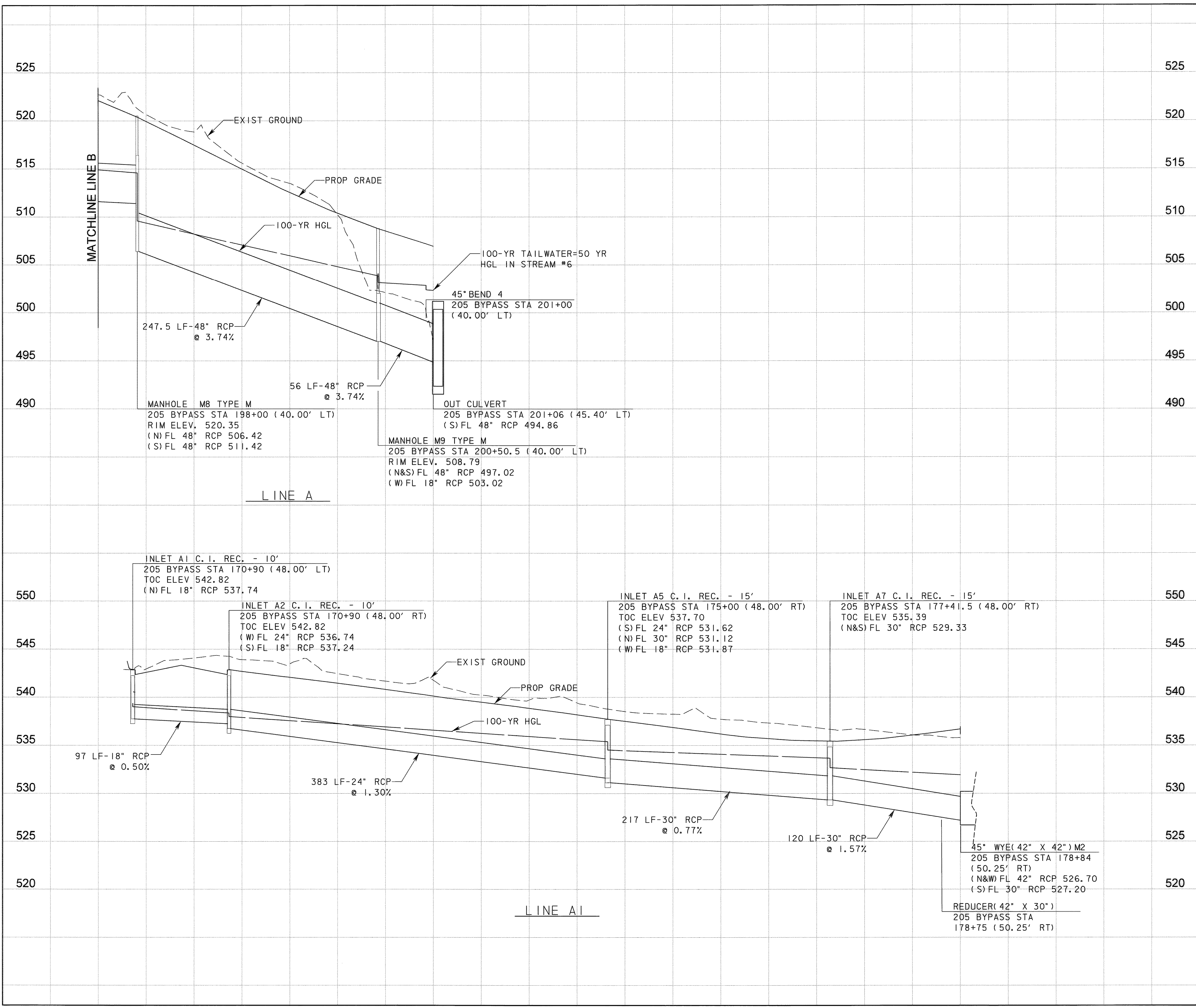


P:\4325\60004153-205Bypass\CADD\Sheets\Section1-140-00-Top\FM652\Record Drawing 10\_7\_09\0975ForM\proft11e-02.dgn  
 11/11/2009



- NOTES:
1. FLOWLINE ELEVATIONS AND GRADES ARE CALCULATED FROM APPROPRIATE CENTER TO CENTER OF PROPOSED DRAINAGE STRUCTURES. PIPE LENGTHS ON PLANS ARE ACTUAL LENGTHS USED IN QUANTITY TAKEOFFS.
  2. ALL UTILITIES SHOWN ARE APPROXIMATE AND SHOULD BE FIELD VERIFIED AS TO THE LOCATION AND DEPTH PRIOR TO CONSTRUCTION.
  3. ALL STORM DRAIN PIPE IS CLASS III UNLESS OTHERWISE NOTED.
  4. REFER TO TABLE FOR MANHOLE DIMENSIONS.
  5. THE CONTROL POINT FOR RECESSED CURB INLETS IS AT THE CENTER OF THE OUTSIDE FACE OF THE INLET.
  6. FOR RECESSED CURB INLETS, VARIABLE DIMENSION "W," AS SHOWN ON THE NCTCOG STANDARDS, SHALL BE 3.5-FT.

**RECORD DRAWING**  
 This drawing is a compilation of the original sealed engineering drawing and modifications by addenda, change orders and information furnished by the contractor. Information shown that was provided by the contractor and others not associated with the design engineer cannot be verified for accuracy or completeness. Original sealed drawing is on file at the office of AECOM USA Group, Inc., TBPE REG. NO. F-3082

ORIGINAL DRAWING SEALED & SIGNED BY  
 Matthew L. Abbe, P.E.  
 TX NO. 92715

NO.	REVISION	BY	DATE

**City of Rockwall, Texas**

**205 BYPASS SECTION 1**

**STORM DRAIN PROFILE LINE A & A1**

2 OF 3

Unit:	PW-DAL-FW	Scale:	Horz: AS SHOWN Vert: AS SHOWN	Date:	11/11/2009
Designed:	SRR/SDB	Checked:	TCB	Project No.:	60004153
Drawn:	FG	Approved:	TCB	Sheet:	97 of 217