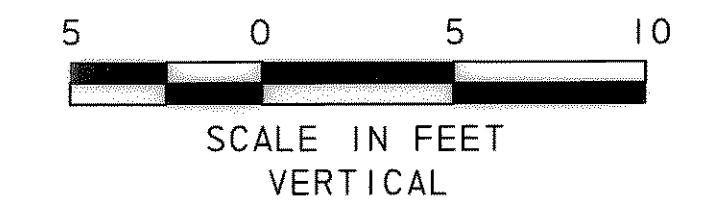
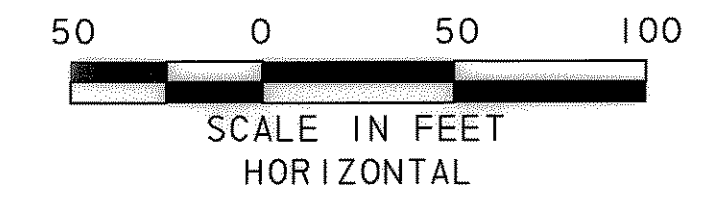
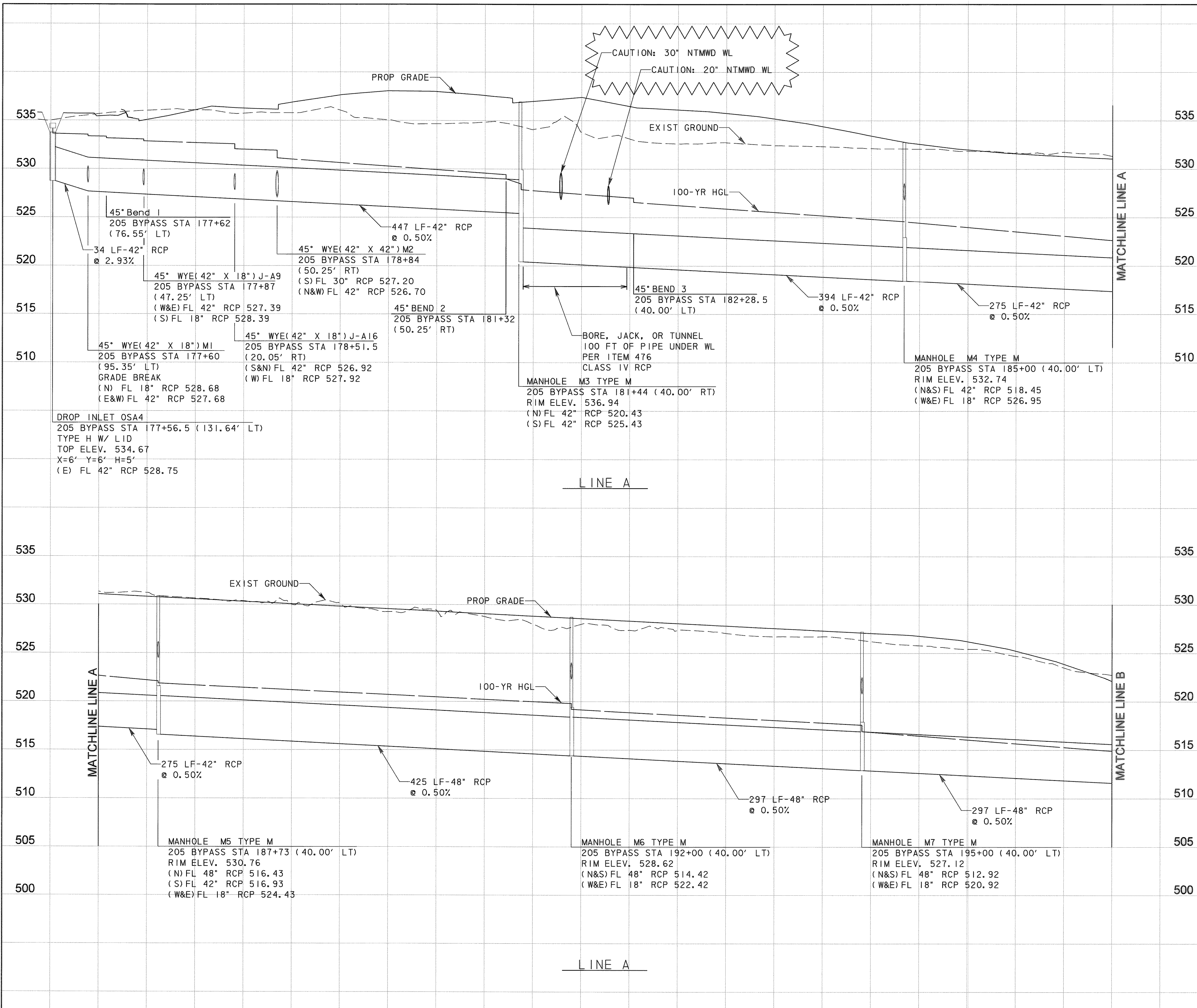


PL:\328\60004153-205Bypass\CADD\Sheets\Section1-140+00-To-FMS52\Record Drawing 10-7-09\09652\storm\profile-01.dgn
11/17/2009



- NOTES:
1. FLOWLINE ELEVATIONS AND GRADES ARE CALCULATED FROM APPROPRIATE CENTER TO CENTER OF PROPOSED DRAINAGE STRUCTURES. PIPE LENGTHS ON PLANS ARE ACTUAL LENGTHS USED IN QUANTITY TAKEOFFS.
 2. ALL UTILITIES SHOWN ARE APPROXIMATE AND SHOULD BE FIELD VERIFIED AS TO THE LOCATION AND DEPTH PRIOR TO CONSTRUCTION.
 3. ALL STORM DRAIN PIPE IS CLASS III UNLESS OTHERWISE NOTED.
 4. REFER TO TABLE FOR MANHOLE DIMENSIONS.
 5. THE CONTROL POINT FOR RECESSED CURB INLETS IS AT THE CENTER OF THE OUTSIDE FACE OF THE INLET.
 6. FOR RECESSED CURB INLETS, VARIABLE DIMENSION "W," AS SHOWN ON THE NCTCOG STANDARDS, SHALL BE 3.5-FT.

SYSTEM	MANHOLE	DIMENSIONS (FT)		
		X	Y	H
A	M3	4.0	5.5	9.5
A	M4	4.0	5.5	4.5
A	M5	4.0	6.0	5.0
A	M6	4.0	6.0	5.0
A	M7	4.0	6.0	5.0
A	M8	4.0	6.0	10.0
A	M9	4.0	6.0	5.0

Note: Y = MH Outside Dimension Parallel to 205 CL
X = MH Outside Dimension Normal to 205 CL
H = Inside Vertical MH Dimension (Does Not Include Riser)

Control Point For MH is at Center of Bottom Slab of MH

RECORD DRAWING

This drawing is a compilation of the original sealed engineering drawing and modifications by addenda, change orders and information furnished by the contractor. Information shown that was provided by the contractor and others not associated with the design engineer cannot be verified for accuracy or completeness. Original sealed drawing is on file at the office of AECOM USA Group, Inc., TBPE REG. NO. F-3082

ORIGINAL DRAWING
SEALED & SIGNED BY
Matthew L. Abbe, P.E.
TX NO. 92715

NO.	REVISION	BY	DATE



205 BYPASS SECTION 1

STORM DRAIN PROFILE LINE A

TCB AECOM
TCB INC.
WWW.TCB.AECOM.COM
17300 DALLAS PARKWAY, SUITE 1010
DALLAS, TEXAS 75248

Unit	PW-DAL-FW	Scale	Horz: AS SHOWN Vert: AS SHOWN	Date	11/11/2009
Designed	SRR/SDB	Checked	TCB	Project No.	60004153
Drawn	FG	Approved	TCB	Sheet	96 of 217