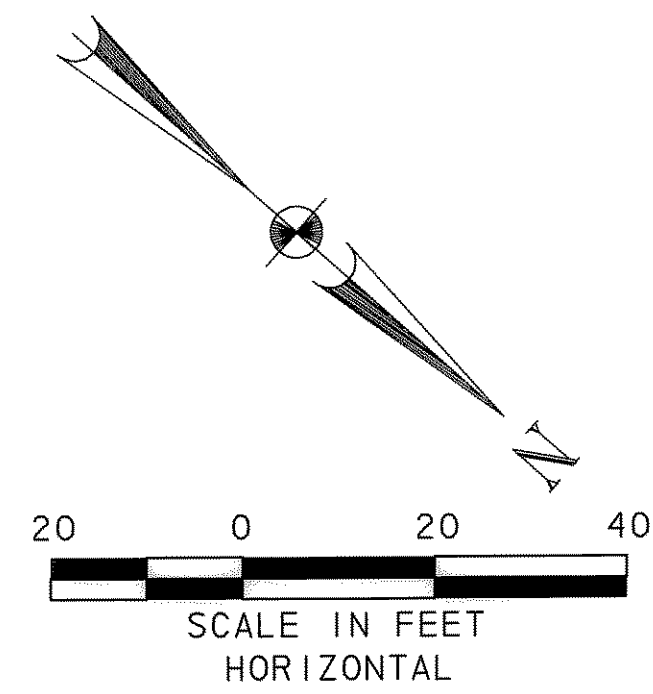
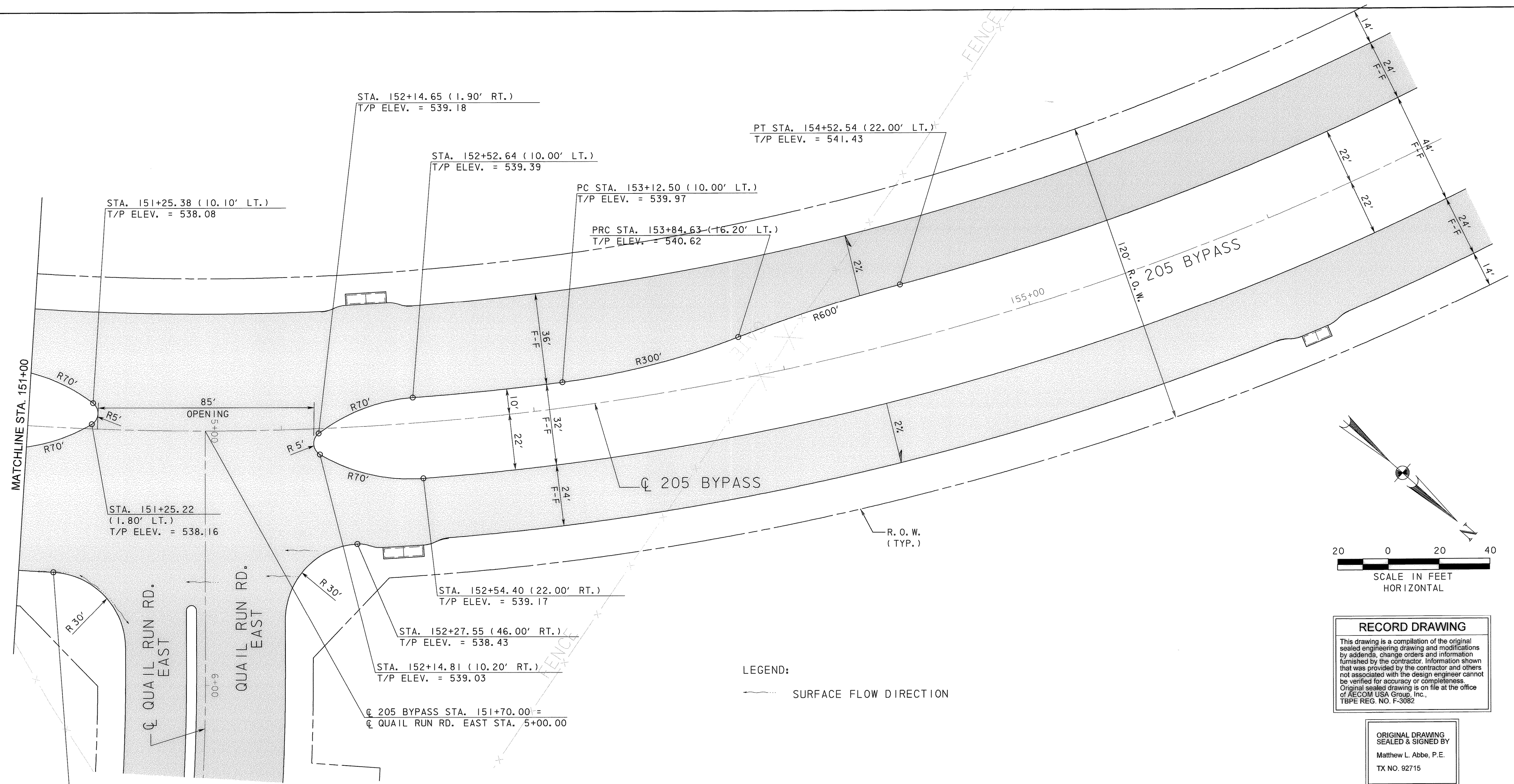


P:\4328\60004153-205Bypass\CADD\Sheets\Sheet1.dwg 10-7-09 09:57 IntersectLay-Dual11 Run-02.dgn
11/11/2009



RECORD DRAWING
This drawing is a compilation of the original sealed engineering drawing and modifications by addenda, change orders and information furnished by the contractor. Information shown that was provided by the contractor and others not associated with the design engineer cannot be verified for accuracy or completeness. Original sealed drawing is on file at the office of AECOM USA Group, Inc., TBPE REG. NO. F-3082

ORIGINAL DRAWING
SEALED & SIGNED BY
Matthew L. Abbe, P.E.
TX NO. 92715

LEGEND:
— SURFACE FLOW DIRECTION

- NOTES:
1. STATION/OFFSETS SHOWN ARE REFERENCED FROM 205 BYPASS CONTROL LINE, UNLESS OTHERWISE SHOWN.
 2. REFER TO PAVING PLAN/PROFILES FOR CROSS-SLOPE TRANSITIONS.
 3. REFER TO QUAIL RUN ROAD PLAN/PROFILES FOR ADDITIONAL INFORMATION.

NO.	REVISION	BY	DATE

City of Rockwall, Texas

**205 BYPASS
SECTION 1**

**QUAIL RUN RD.
INTERSECTION LAYOUT** 2 OF 2

TCB | AECOM
TCB INC.
WWW.TCB.AECOM.COM
17300 DALLAS PARKWAY, SUITE 1010
DALLAS, TEXAS 75248

Unit	PW-DAL-FW	Scale:	Horiz: AS SHOWN Vert: AS SHOWN	Date	11/11/2009
Designed	SKW/MLA	Checked	TCB	Project No.	60004153
Drawn	TCB	Approved	TCB	Sheet	57 of 217