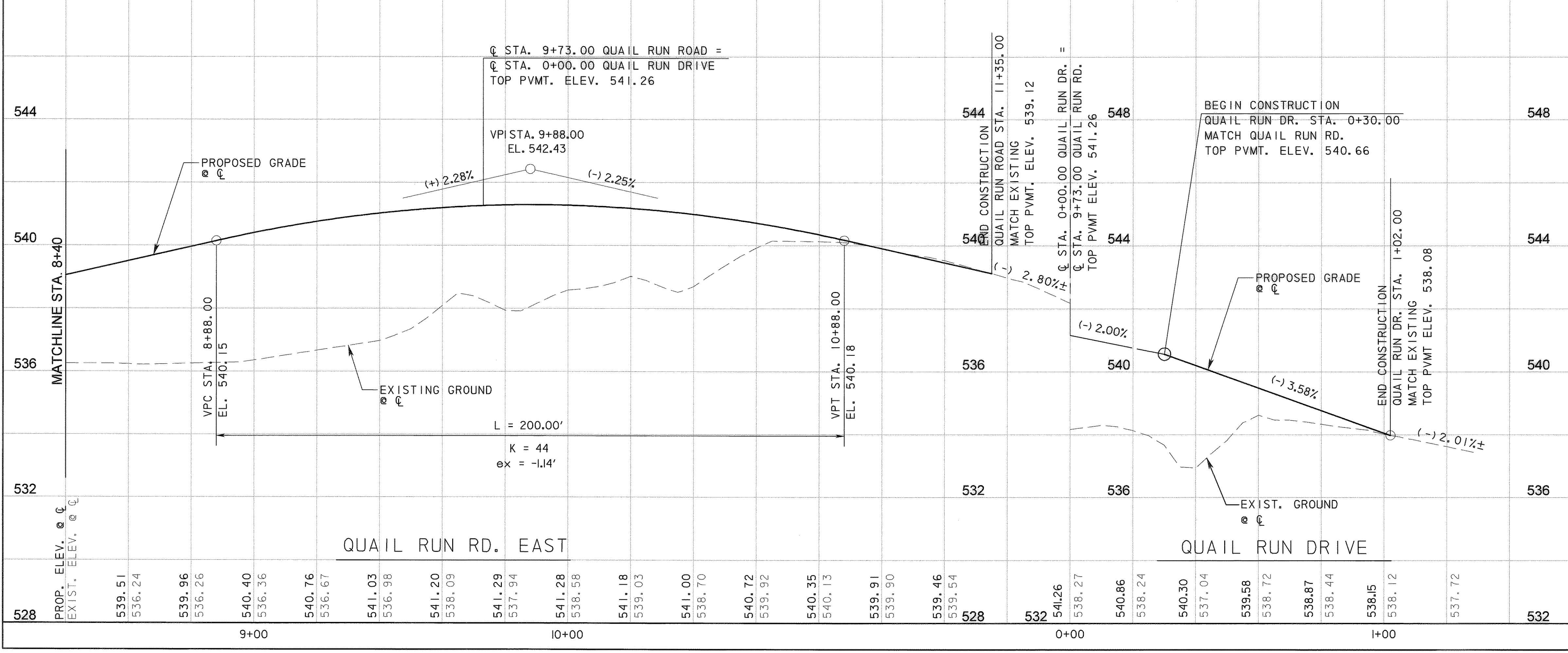


**LEGEND**

- CONCRETE PAVEMENT
- HMAC PAVEMENT
- CURB INLET
- RECESSED CURB INLET

NOTE: STATION/OFFSETS SHOWN ARE REFERENCED FROM QUAIL RUN ROAD CONTROL LINE, UNLESS OTHERWISE SHOWN.

CURVE DATA					
NO.	Δ	D	R	T	L
QRUNEDW-1	14° 59' 49.83" (RT)	28° 38' 52.40"	200.00'	26.33'	52.35'



**RECORD DRAWING**  
 This drawing is a compilation of the original sealed engineering drawing and modifications by addenda, change orders and information furnished by the contractor. Information shown that was provided by the contractor and others not associated with the design engineer cannot be verified for accuracy or completeness. Original sealed drawing is on file at the office of AECOM USA Group, Inc., TBPE REG. NO. F-3082

ORIGINAL DRAWING SEALED & SIGNED BY  
 Matthew L. Abbe, P.E.  
 TX NO. 92715

NO.	REVISION	BY	DATE

**City of Rockwall, Texas**

205 BYPASS SECTION 1

QUAIL RUN RD. EAST  
 PLAN & PROFILE  
 STA. 3+40 TO STA. 11+86.72

2 OF 2

TCB AECOM  
 TCB INC. WWW.TCB.AECOM.COM  
 17300 DALLAS PARKWAY, SUITE 1010  
 DALLAS, TEXAS 75248

Unit	PW-DAL-FW	Scale:	Horz: AS SHOWN Vert: AS SHOWN	Date	11/11/2009
Designed	SKW/MLA	Checked	TCB	Project No.	60004153
Drawn	TCB	Approved	TCB	Sheet	53 of 217

P:\4328\60004153-205Bypass\CADD\Sheets\Section1\140-00-To-FM552\Record Drawing 10\_7\_09\053pav.fmgfp-Cur1\Run-02.dgn  
 11/11/2009