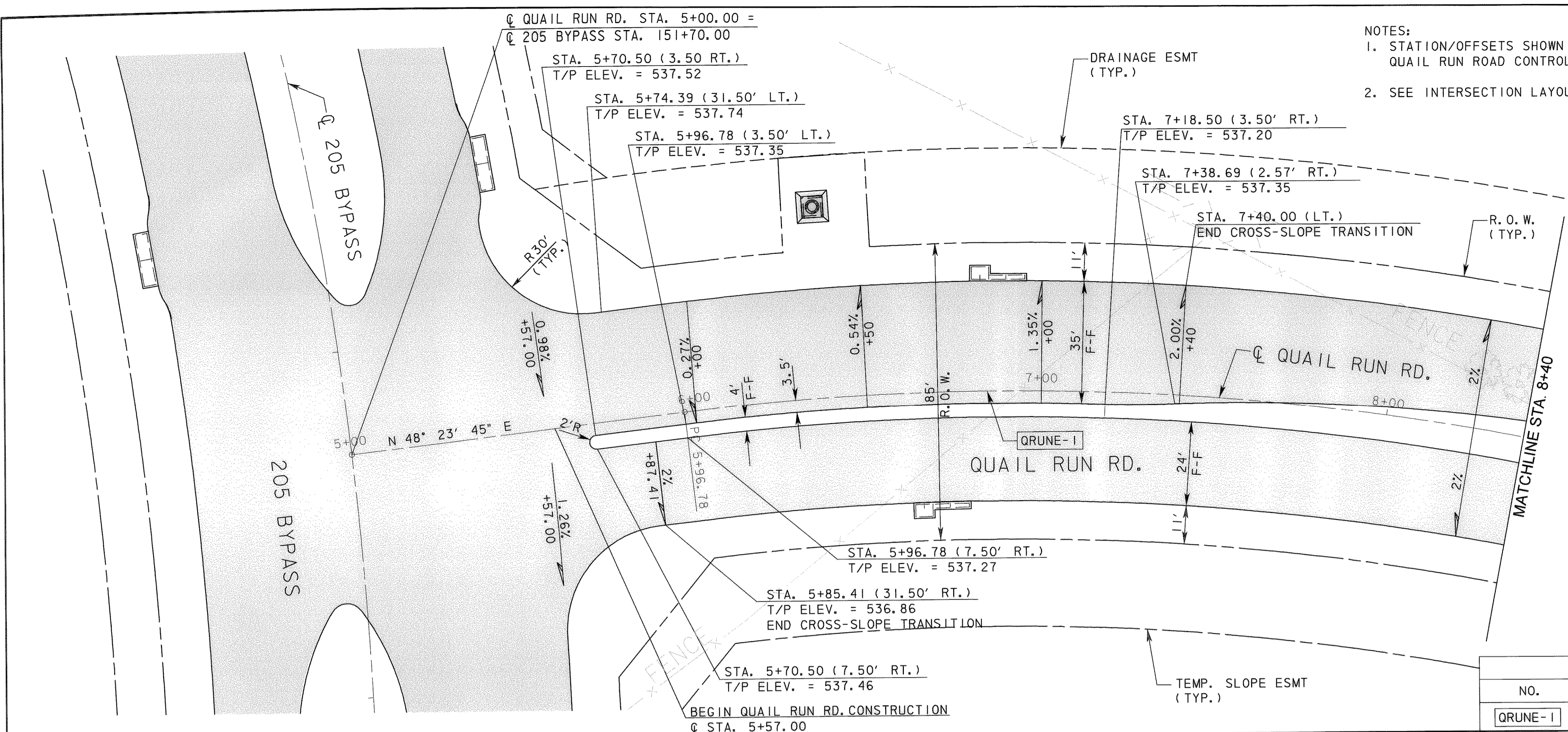
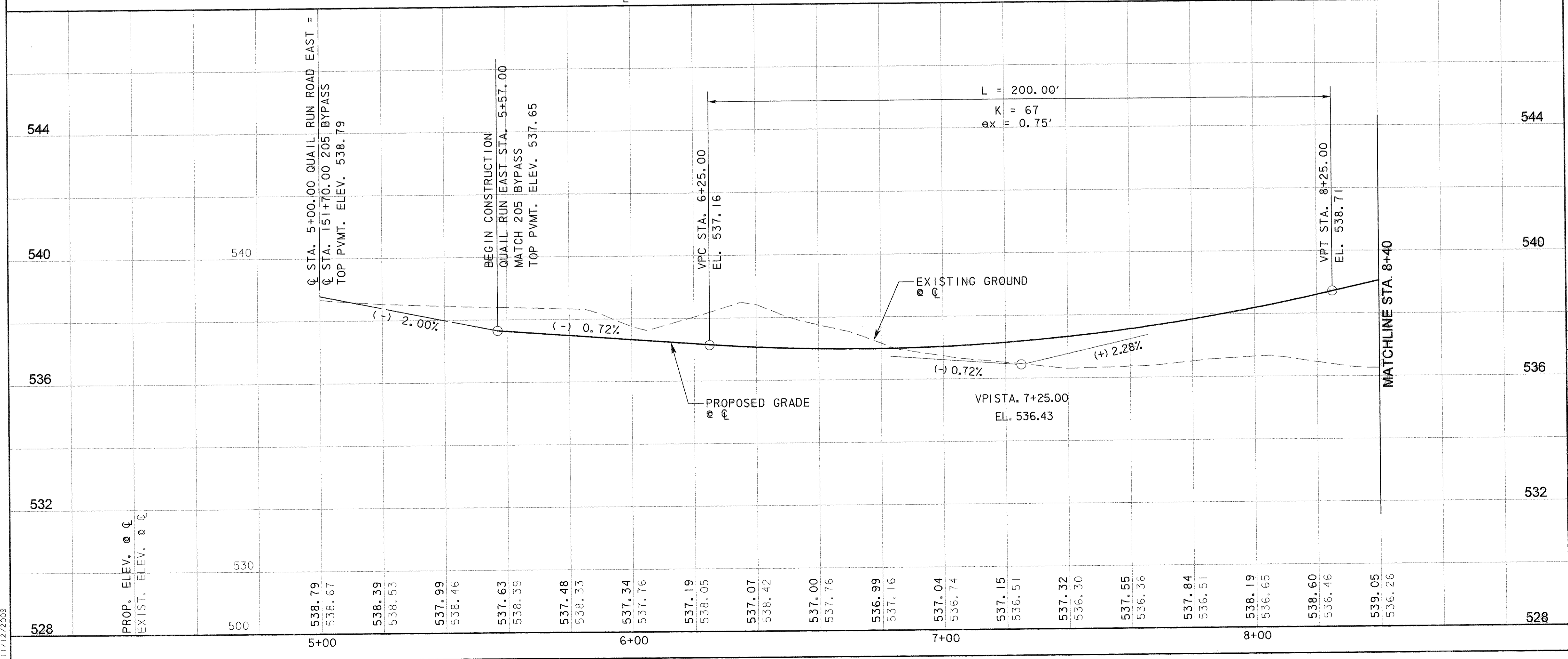
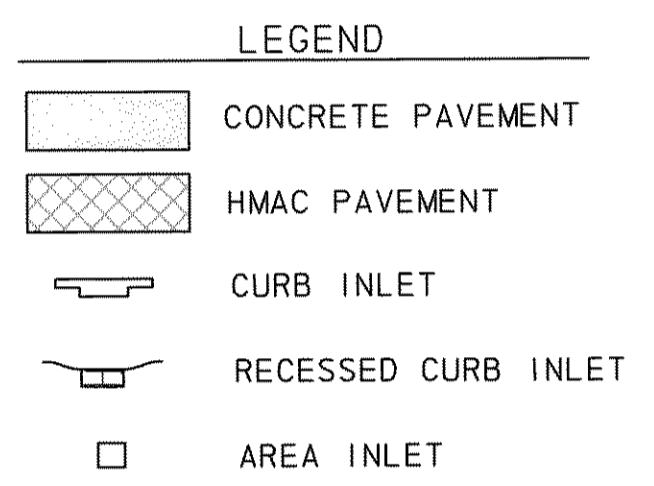
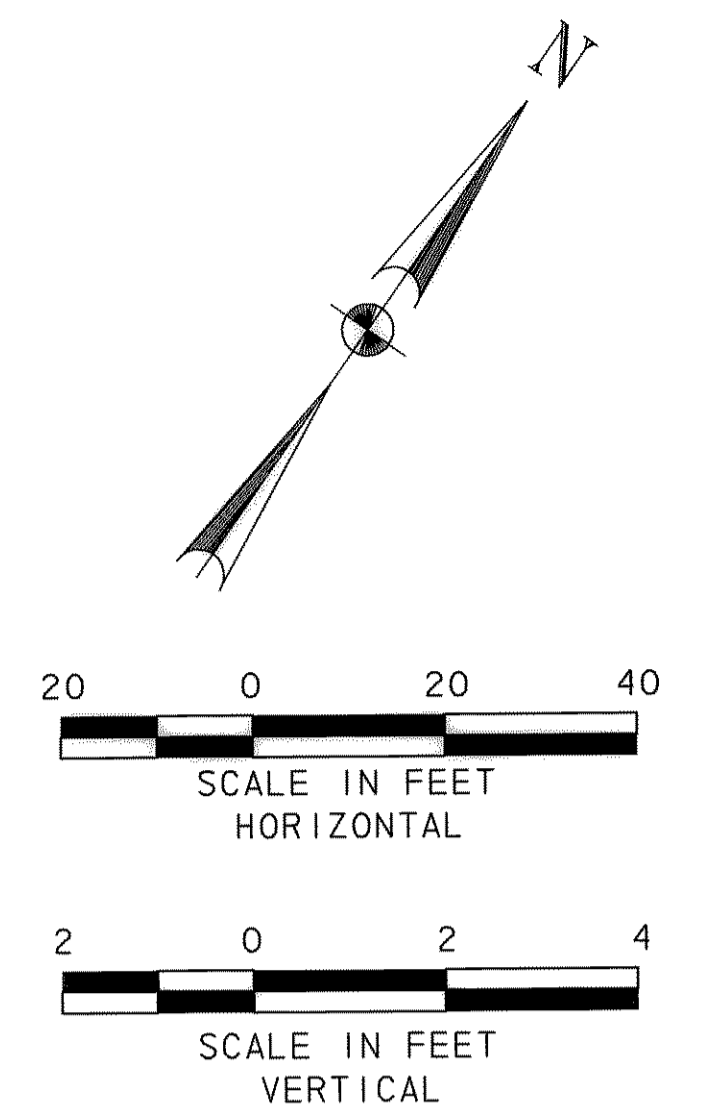


P:\4328\60004\53-205Bypass\CADD\Sheets\Sect1\1-140-00-To-FM552\Record Drawing 10-7-09\052Pov\ingPP-Quail Run-01.dgn
 11/12/2009



NOTES:
 1. STATION/OFFSETS SHOWN ARE REFERENCED FROM QUAIL RUN ROAD CONTROL LINE, UNLESS OTHERWISE SHOWN.
 2. SEE INTERSECTION LAYOUTS FOR ADDITIONAL INFORMATION.



RECORD DRAWING
 This drawing is a compilation of the original sealed engineering drawing and modifications by addenda, change orders and information furnished by the contractor. Information shown that was provided by the contractor and others not associated with the design engineer cannot be verified for accuracy or completeness. Original sealed drawing is on file at the office of AECOM USA Group, Inc., TBPE REG. NO. F-3082

ORIGINAL DRAWING SEALED & SIGNED BY
 Matthew L. Abbe, P.E.
 TX NO. 92715

NO.	REVISION	BY	DATE

City of Rockwall, Texas

205 BYPASS SECTION 1

QUAIL RUN RD. PLAN & PROFILE
STA. 5+00 TO STA. 8+40

TCB AECOM

Unit: PW-DAL-FW	Scale: Horiz. AS SHOWN	Date: 11/12/2009
Designed: SKW/MLA	Checked: TCB	Project No. 60004153
Drawn: TCB	Approved: TCB	Sheet: 52 of 217