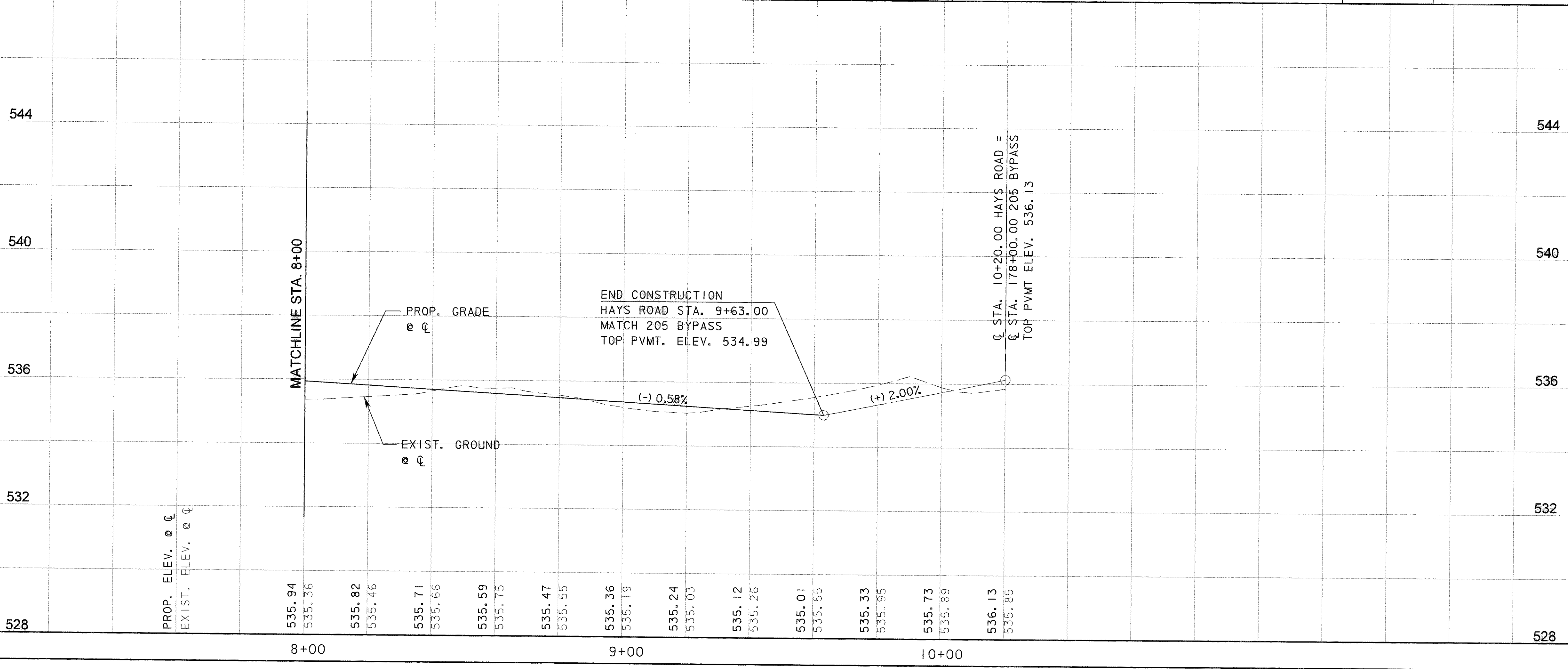
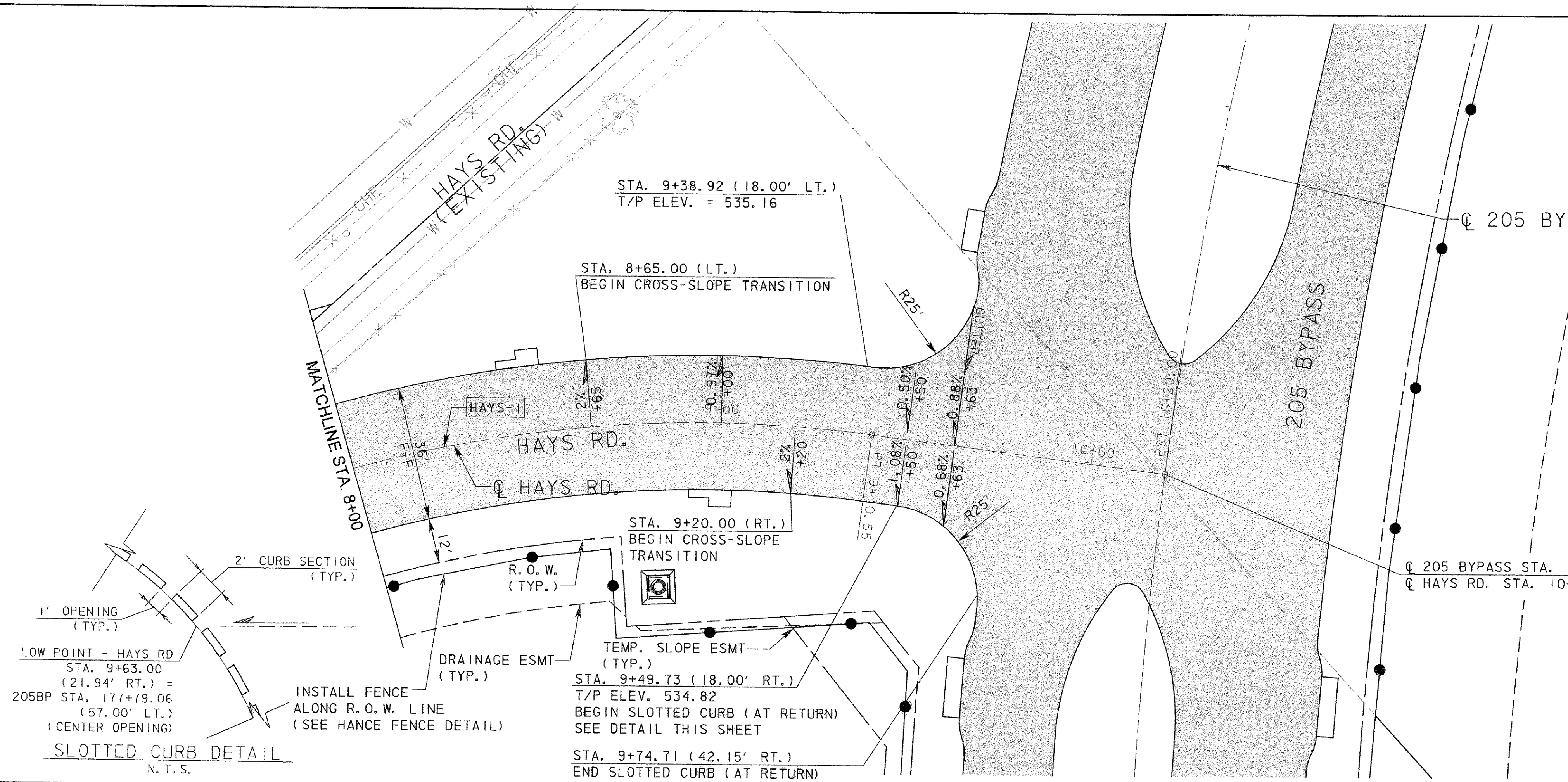


LEGEND

	CONCRETE PAVEMENT
	HMAC PAVEMENT
	CURB INLET
	RECESSED CURB INLET

CURVE DATA					
NO.	Δ	D	R	T	L
HAYS-1	49° 28' 49.25" (RT)	16' 22" 12.80"	350.00'	161.28'	302.26'



NOTES:
 1) STATION/OFFSETS SHOWN ARE REFERENCED FROM HAYS ROAD CONTROL LINE, UNLESS OTHERWISE SHOWN.
 2) SEE INTERSECTION LAYOUTS FOR ADDITIONAL INFORMATION.

RECORD DRAWING
 This drawing is a compilation of the original sealed engineering drawing and modifications by addenda, change orders and information furnished by the contractor. Information shown that was provided by the contractor and others not associated with the design engineer cannot be verified for accuracy or completeness. Original sealed drawing is on file at the office of AECOM USA Group, Inc. TBPE REG. NO. F-3082

ORIGINAL DRAWING SEALED & SIGNED BY
 Matthew L. Abbe, P.E.
 TX NO. 92715

NO.	REVISION	BY	DATE

City of Rockwall, Texas

205 BYPASS SECTION 1

HAYS RD. PLAN & PROFILE STA. 8+00 TO STA. 10+20 2 OF 2

TCB | AECOM

Unit: PW-DAL-FW Scale: Horiz: AS SHOWN Date: 11/11/2009
 Vert: AS SHOWN
 Designed: SKW/MLA Checked: TCB Project No.: 60004153
 Drawn: TCB Approved: TCB Sheet: 55 of 217

P:\4328\60004153-205Bypass\CADD\Sheets\A_Sect1.dgn | 140+00-To-FM552\Record Draw\ng 10_7_09\055Pov\ngP-Hays-02.dgn
 11/11/2009