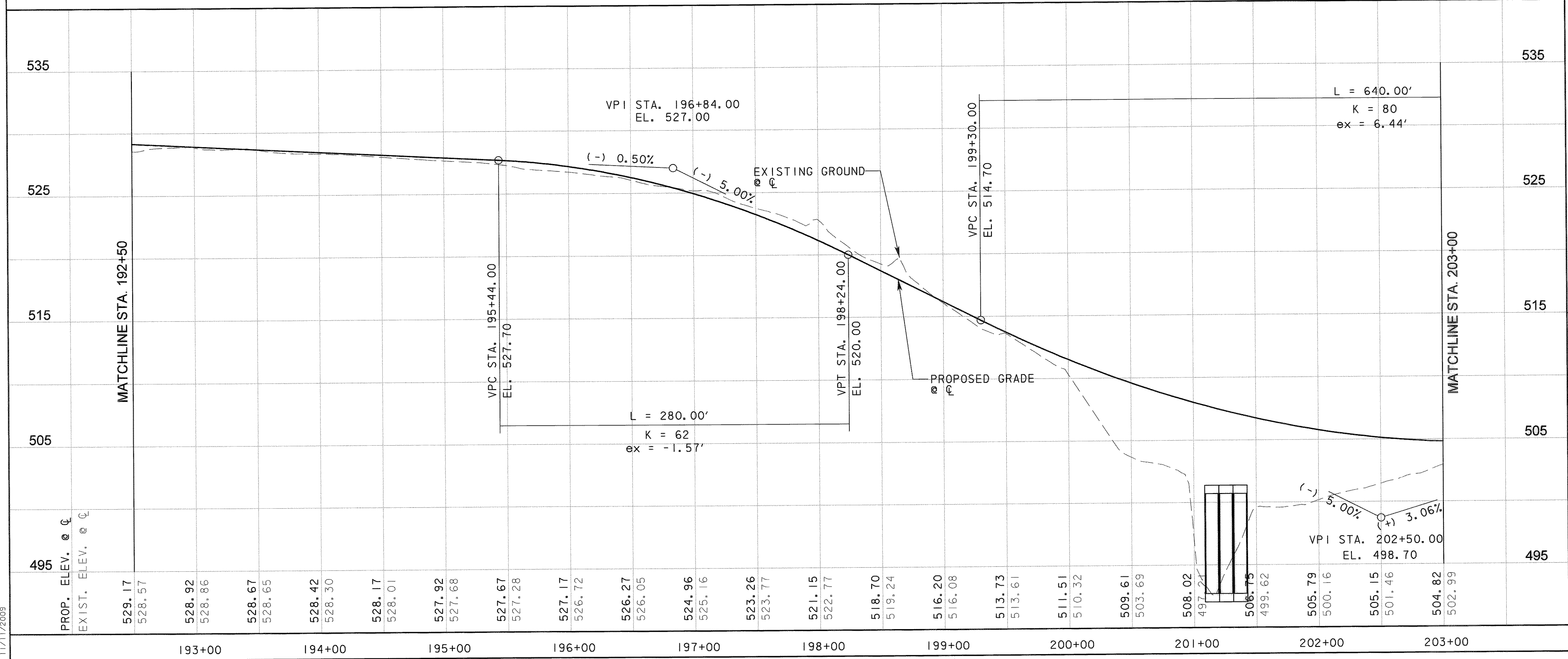


- LEGEND**
- CONCRETE PAVEMENT
  - HMAC PAVEMENT
  - CURB INLET
  - RECESSED CURB INLET

NOTE:  
SEE INTERSECTION LAYOUTS FOR  
ADDITIONAL INFORMATION.



**RECORD DRAWING**  
This drawing is a compilation of the original sealed engineering drawing and modifications by addenda, change orders and information furnished by the contractor. Information shown that was provided by the contractor and others not associated with the design engineer cannot be verified for accuracy or completeness. Original sealed drawing is on file at the office of AECOM USA Group, Inc., TBPE REG. NO. F-3082

ORIGINAL DRAWING  
SEALED & SIGNED BY  
Matthew L. Abbe, P.E.  
TX NO. 92715

NO.	REVISION	BY	DATE

**City of Rockwall, Texas**

**205 BYPASS SECTION 1**

**PLAN & PROFILE**  
STA. 192+50 TO STA. 203+00

6 OF 7

**TCB AECOM**

Unit	PW-DAL-FW	Scale	Horz AS SHOWN Vert AS SHOWN	Date	11/11/2009
Designed	SKW/MLA	Checked	TCB	Project No.	60004153
Drawn	TCB	Approved	TCB	Sheet	50 of 217

P:\4328\60004153-205Bypass\CADD\Sheets\Section\1-140+00-To-FW652\Record Drawing 10-7-09\050Pav.IngP-205BPOb.dgn  
 11/11/2009