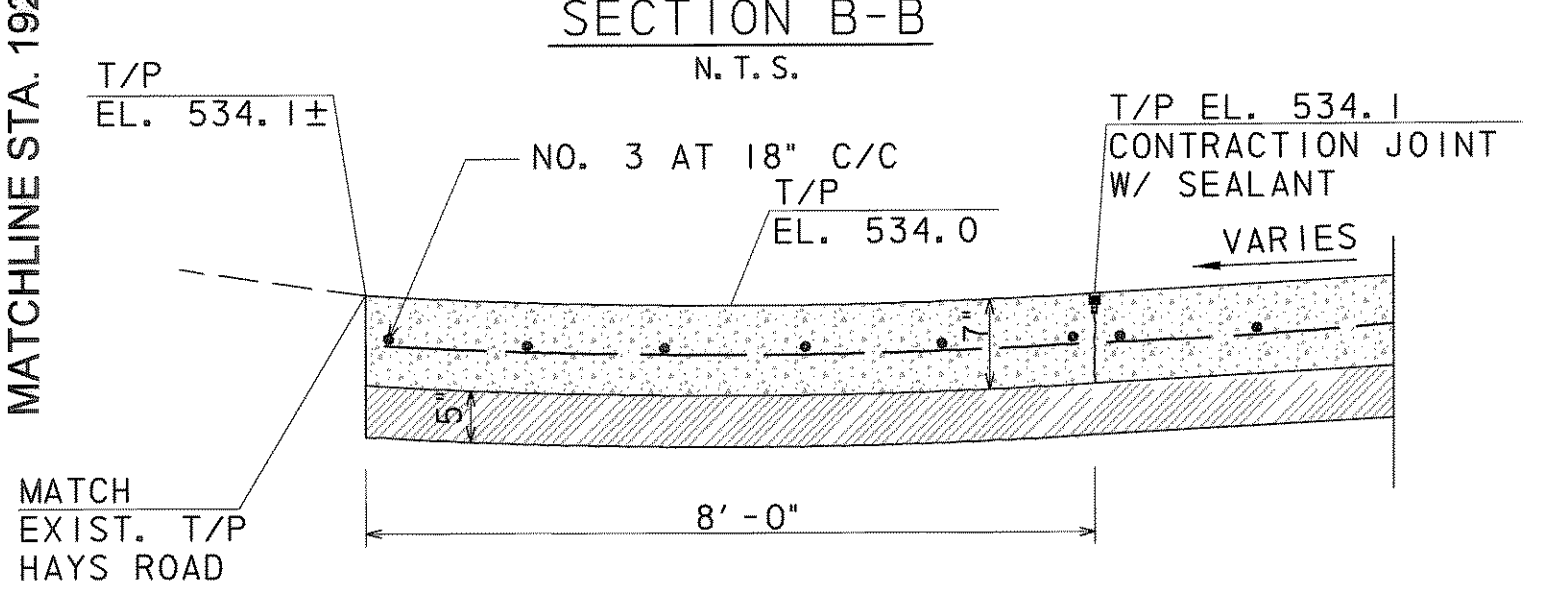
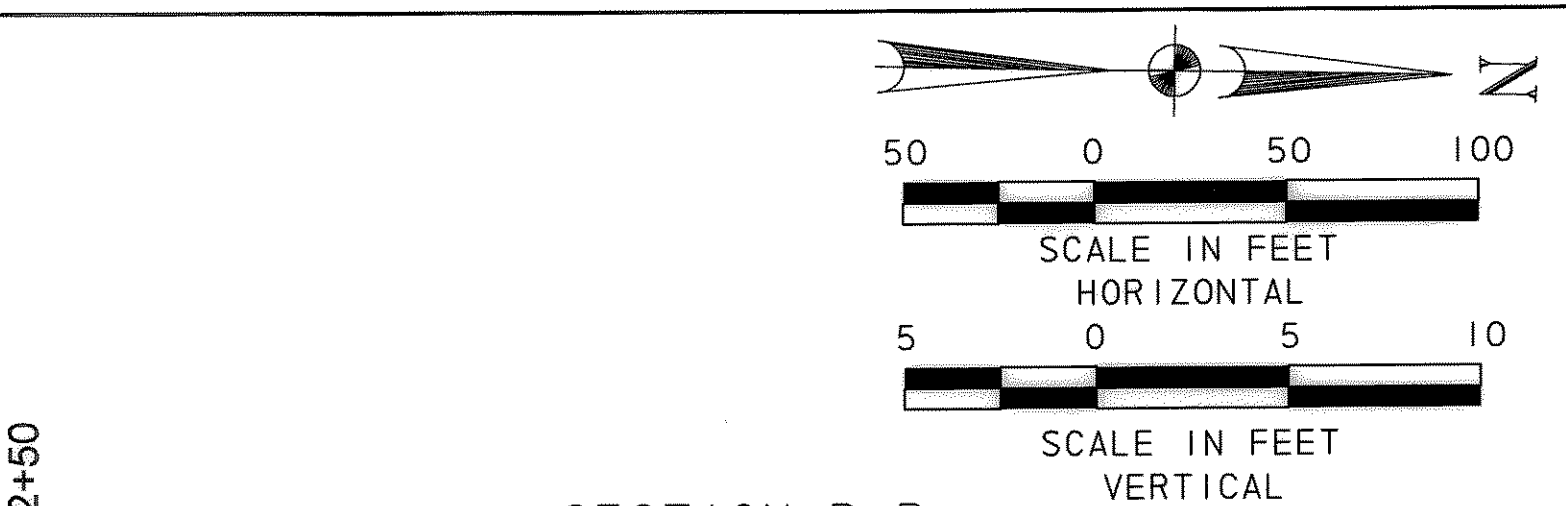
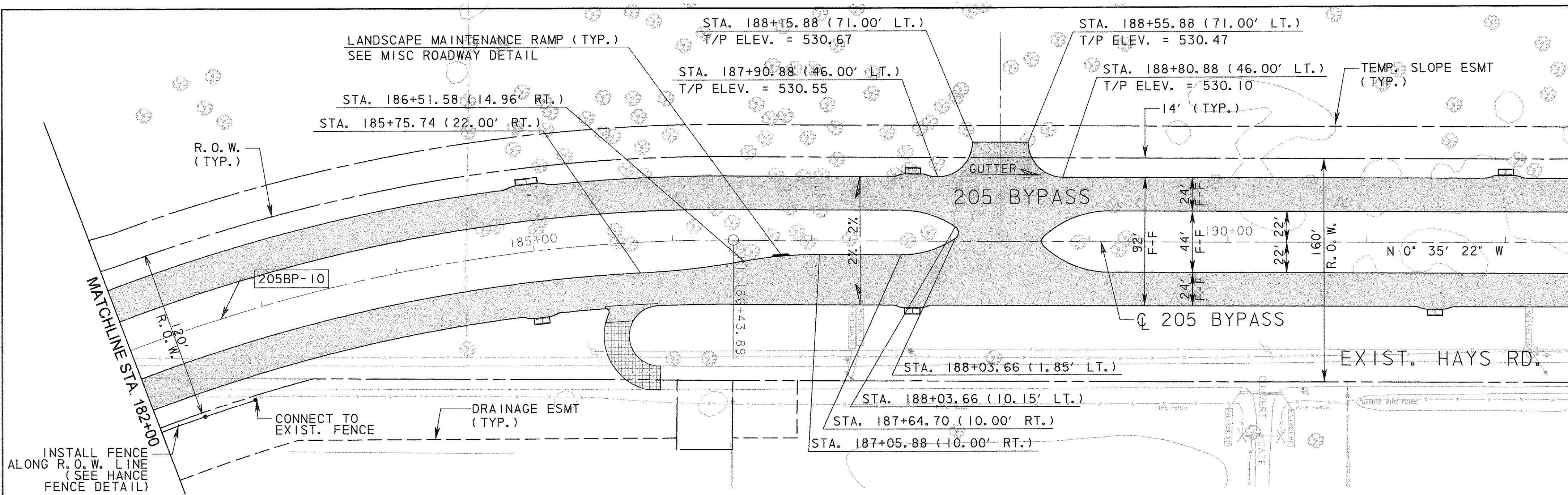


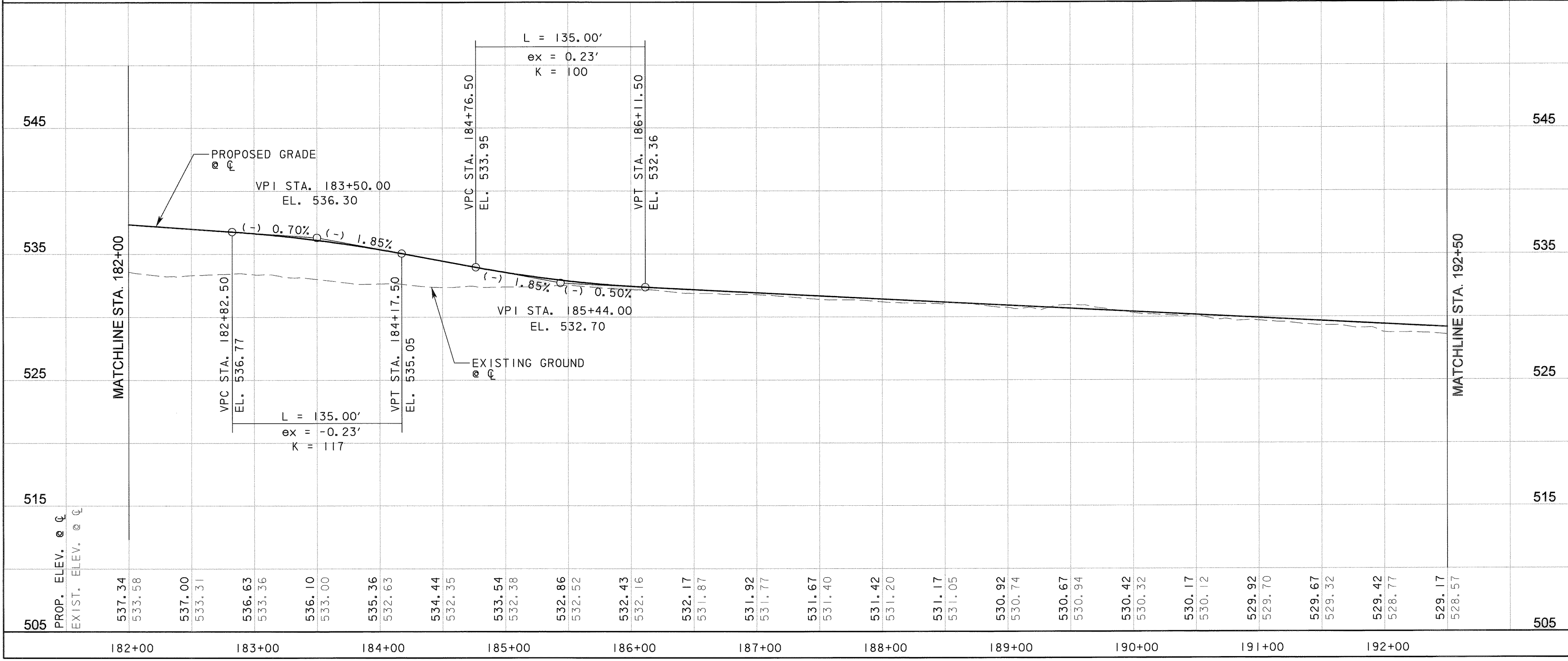
P:\4328\60004\53-205Bypass\CADD\Sheets\Section 1 - 140+00- To-FW52\Record Drawing 10_7_09\049Pav IngpP-205BP05.dgn
11/1/2009



- LEGEND
- CONCRETE PAVEMENT
 - HMAC PAVEMENT
 - CURB INLET
 - RECESSED CURB INLET

NOTE:
STATION/OFFSETS SHOWN ARE REFERENCED FROM
205 BYPASS CONTROL LINE, UNLESS OTHERWISE SHOWN.

CURVE DATA					
NO.	Δ	D	R	T	L
205BP-10	71° 30' 53.37" (RT)	4° 46' 28.73"	1,200.00'	864.11'	1,497.80'



RECORD DRAWING

This drawing is a compilation of the original sealed engineering drawing and modifications by addenda, change orders and information furnished by the contractor. Information shown that was provided by the contractor and others not associated with the design engineer cannot be verified for accuracy or completeness. Original sealed drawing is on file at the office of AECOM USA Group, Inc., TBPE REG. NO. F-3082.

ORIGINAL DRAWING
SEALED & SIGNED BY

Matthew L. Abbe, P.E.
TX NO. 92715

NO.	REVISION	BY	DATE

City of Rockwall, Texas

**205 BYPASS
SECTION 1**

**PLAN & PROFILE
STA. 182+00 TO STA. 192+50**

5 OF 7

TCB AECOM

TCB INC.
WWW.TCB.AECOM.COM
17300 DALLAS PARKWAY, SUITE 1010
DALLAS, TEXAS 75248

Unit: PW-DAL-FW	Scale: Horiz: AS SHOWN Vert: AS SHOWN	Date: 11/11/2009
Designed: SKW/MLA	Checked: TCB	Project No: 60004153
Drawn: TCB	Approved: TCB	Sheet: 49 of 217