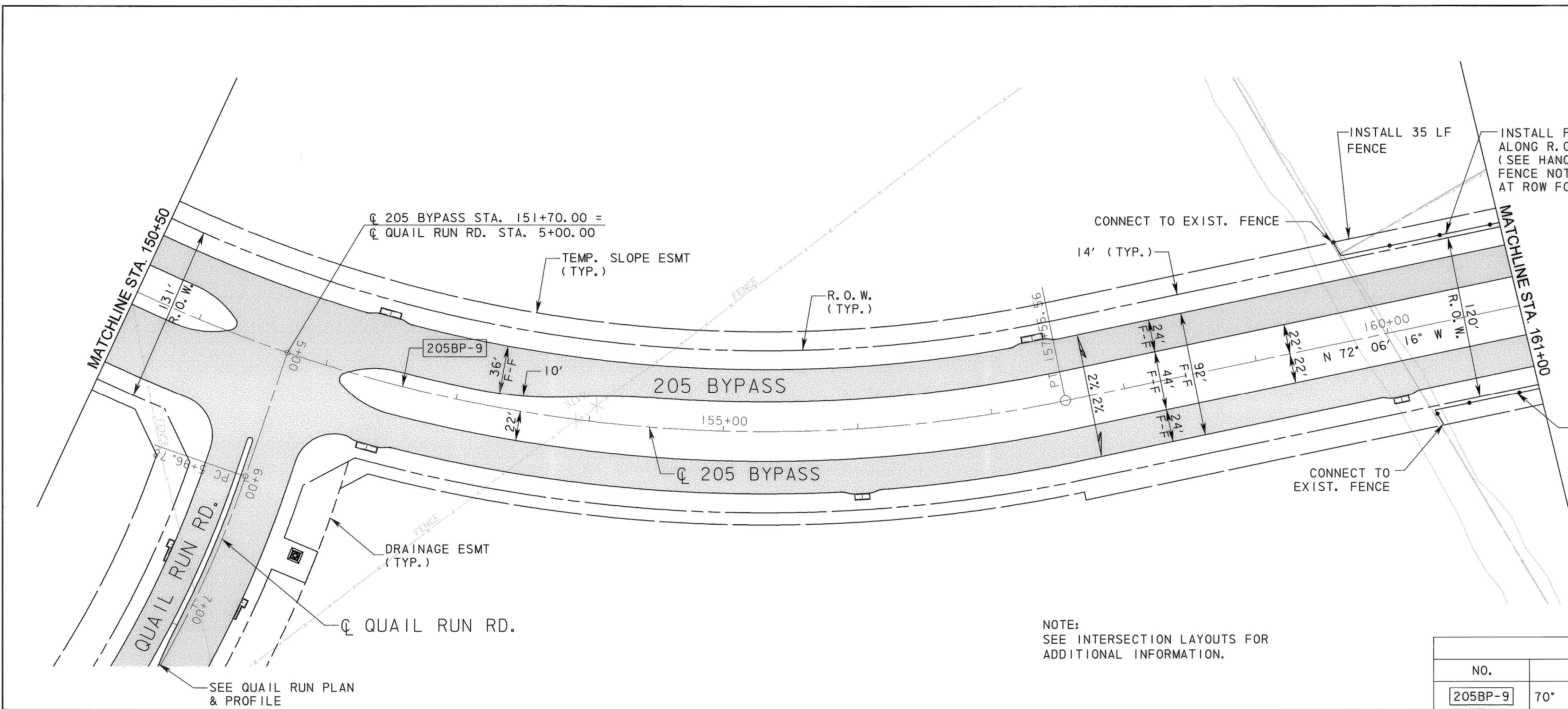


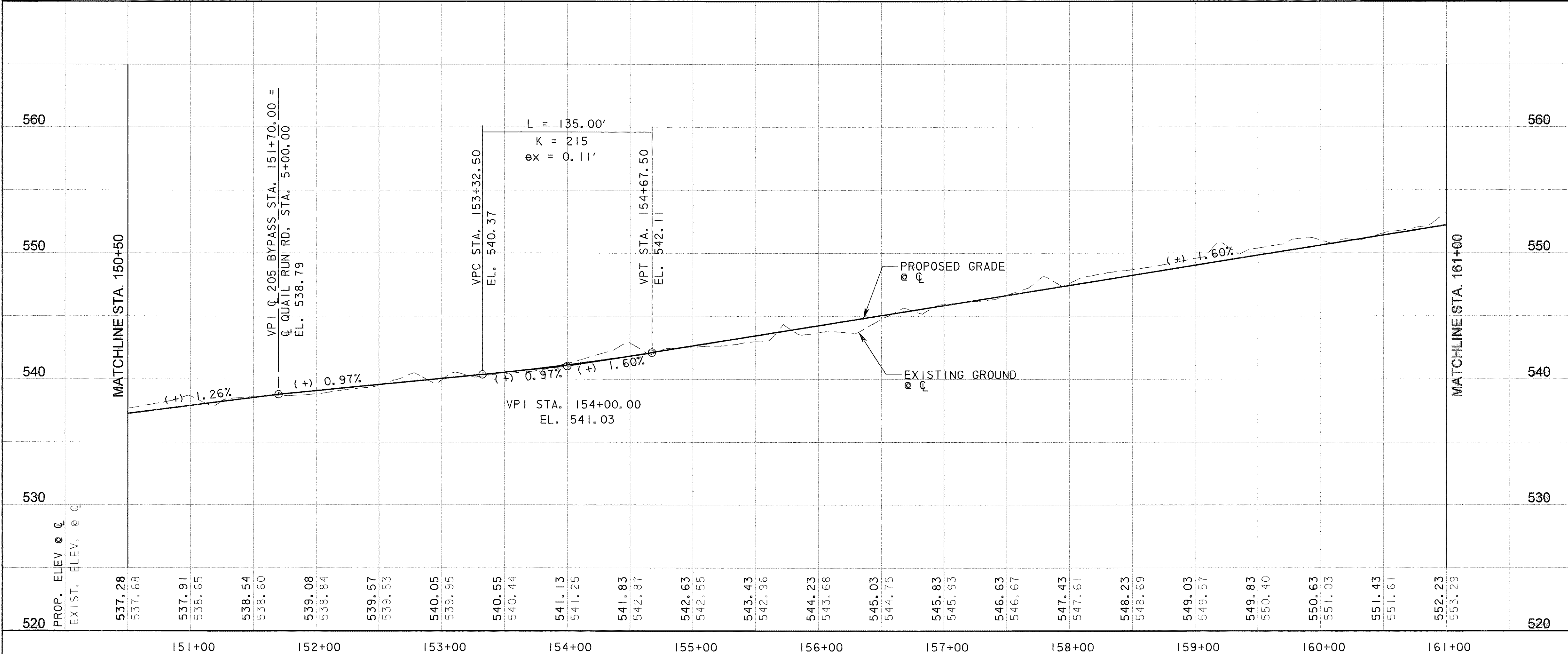
LEGEND

	CONCRETE PAVEMENT
	HMAC PAVEMENT
	CURB INLET
	RECESSED CURB INLET



NOTE:
SEE INTERSECTION LAYOUTS FOR
ADDITIONAL INFORMATION.

CURVE DATA					
NO.	Δ	D	R	T	L
205BP-9	70° 11' 22.54" (LT)	5' 12' 31.35"	1,100.00'	772.94'	1,347.54'



RECORD DRAWING
This drawing is a compilation of the original sealed engineering drawing and modifications by addenda, change orders and information furnished by the contractor. Information shown that was provided by the contractor and others not associated with the design engineer cannot be verified for accuracy or completeness. Original sealed drawing is on file at the office of AECOM USA Group, Inc., TBPE REG. NO. F-3082.

ORIGINAL DRAWING
SEALED & SIGNED BY
Matthew L. Abbe, P.E.
TX NO. 92715

NO.	REVISION	BY	DATE

City of Rockwall, Texas

**205 BYPASS
SECTION 1**

**PLAN & PROFILE
STA. 150+50 TO STA. 161+00**

2 OF 7

TCB AECOM
TCB INC.
WWW.TCB.AECOM.COM
17300 DALLAS PARKWAY, SUITE 1010
DALLAS, TEXAS 75248

Unit	PW-DAL-FW	Scale:	Horz: AS SHOWN Vert: AS SHOWN	Date	11/11/2009
Designed	SKW/MLA	Checked	TCB	Project No.	60004153
Drawn	TCB	Approved	TCB	Sheet	46 of 217

P:\4328\60004153-205Bypass\CADD\Sheets\Sec1\140-00-To-FMS2\Record Drawing 10.7.09\046pav.rng\205BP02.dgn
11/11/2009