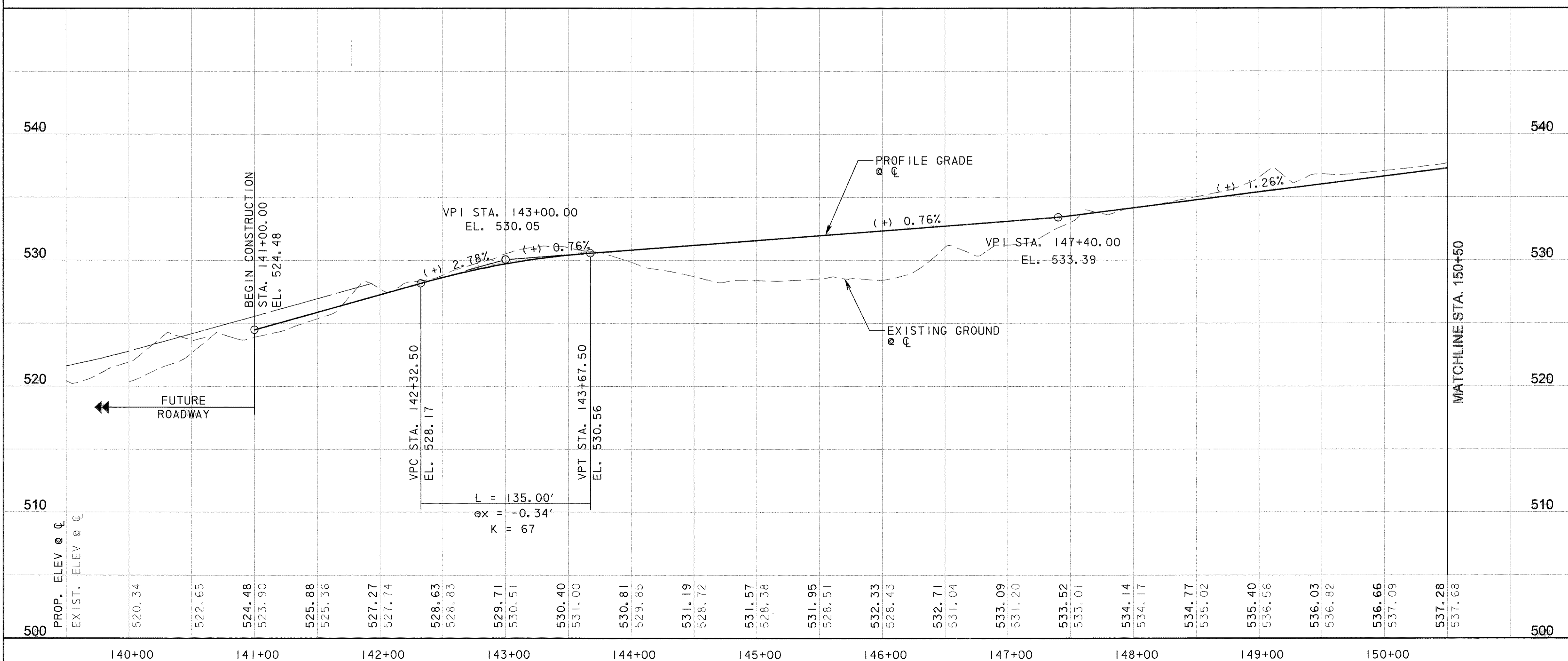


CURVE DATA					
NO.	Δ	D	R	T	L
205BP-9	70° 11' 22.54" (LT)	5' 12' 31.35"	1,100.00'	772.94'	1,347.54'

- LEGEND**
- CONCRETE PAVEMENT
 - HMAC PAVEMENT
 - CURB INLET
 - RECESSED CURB INLET

P:\1328\60004153-205Bypass\CADD\Sheets\Section1-140-00-To-FM52\Record Drawing\10_7_09\046Pav\Ing\FP-205BP01.dgn 11/11/2009



RECORD DRAWING
This drawing is a compilation of the original sealed engineering drawing and modifications by addenda, change orders and information furnished by the contractor. Information shown that was provided by the contractor and others not associated with the design engineer cannot be verified for accuracy or completeness. Original sealed drawing is on file at the office of AECOM USA Group, Inc., TBPE REG. NO. F-3082

ORIGINAL DRAWING
SEALED & SIGNED BY
Matthew L. Abbe, P.E.
TX NO. 92715

NO.	REVISION	BY	DATE

City of Rockwall, Texas

**205 BYPASS
SECTION 1**

**PLAN & PROFILE
STA. 140+00 TO STA. 150+50**

1 OF 7

TCB AECOM
TCB INC. WWW.TCB.AECOM.COM
17300 DALLAS PARKWAY, SUITE 1010
DALLAS, TEXAS 75248

Unit: PW-DAL-FW	Scale: Horiz AS SHOWN Vert AS SHOWN	Date: 11/11/2009
Designed: SKW/MLA	Checked: TCB	Project No: 60004153
Drawn: TCB	Approved: TCB	Sheet: 45 of 217