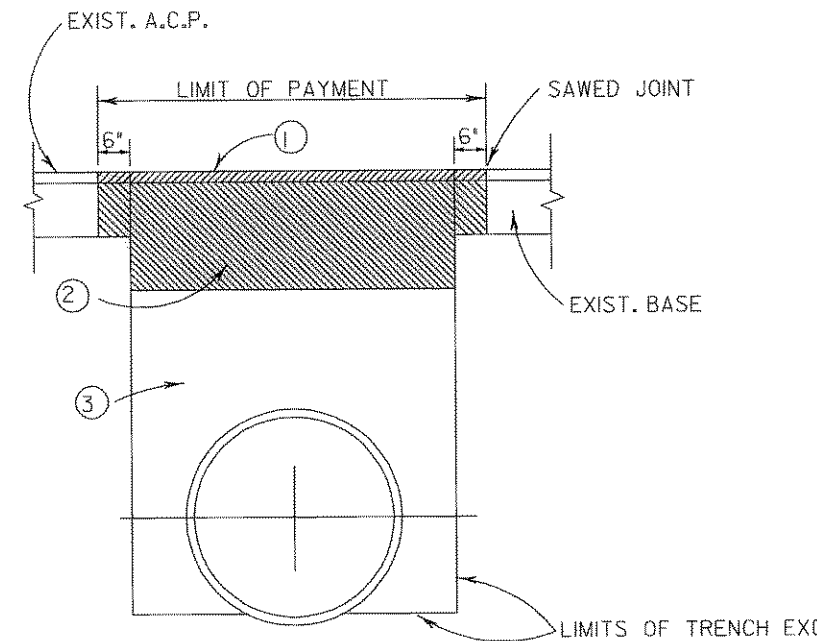
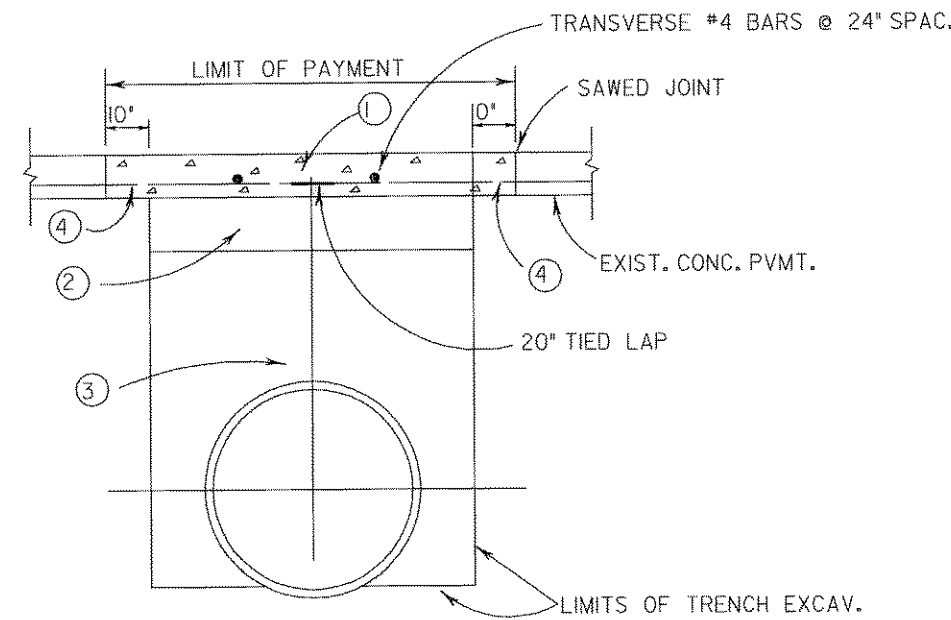


- 1 APPROX. 2" HMALC, T.Y."D"
- 2 APPROX. 10" HMALC BASE, T.Y."B"
- 3 MECHANICALLY TAMPED NATIVE MATERIAL, MAXIMUM LIFT OF 6"



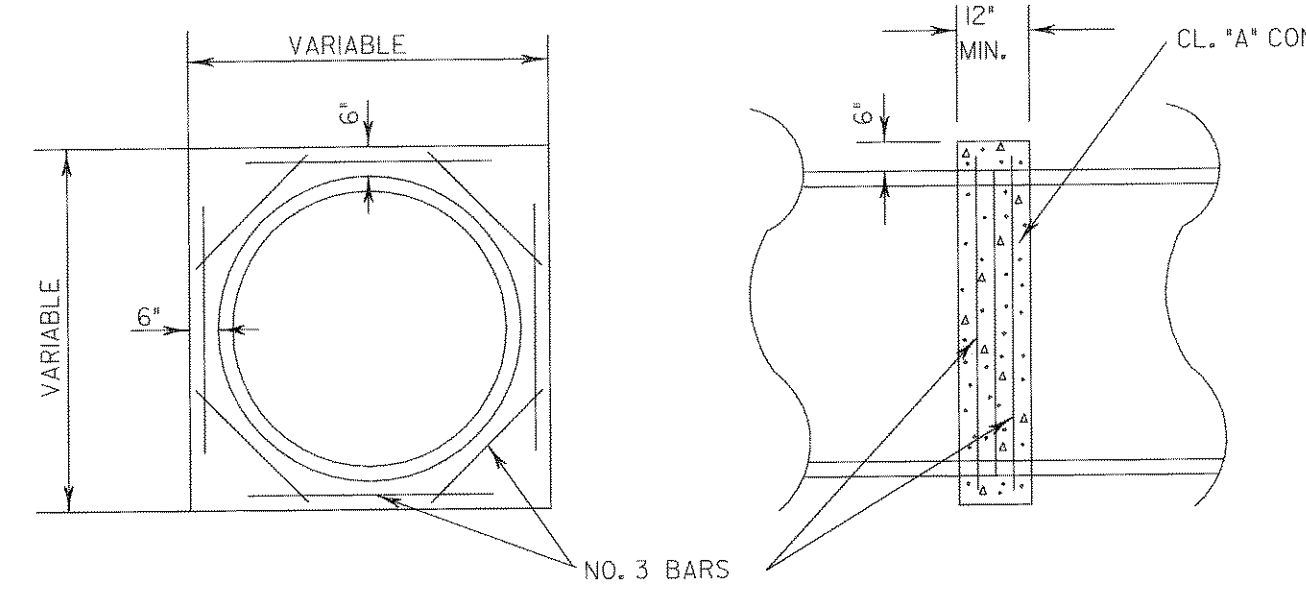
ASPHALT PAVEMENT

- 1 CLASS "A" CONC. PVMT. (TO MAT CH EXIST. PVMT. DEPTH)
- 2 8" FLEXIBLE BASE
- 3 MECHANICALLY TAMPED NATIVE MATERIAL, MAXIMUM LIFT OF 6"
- 4 8" WELDED LAP



CONCRETE PAVEMENT

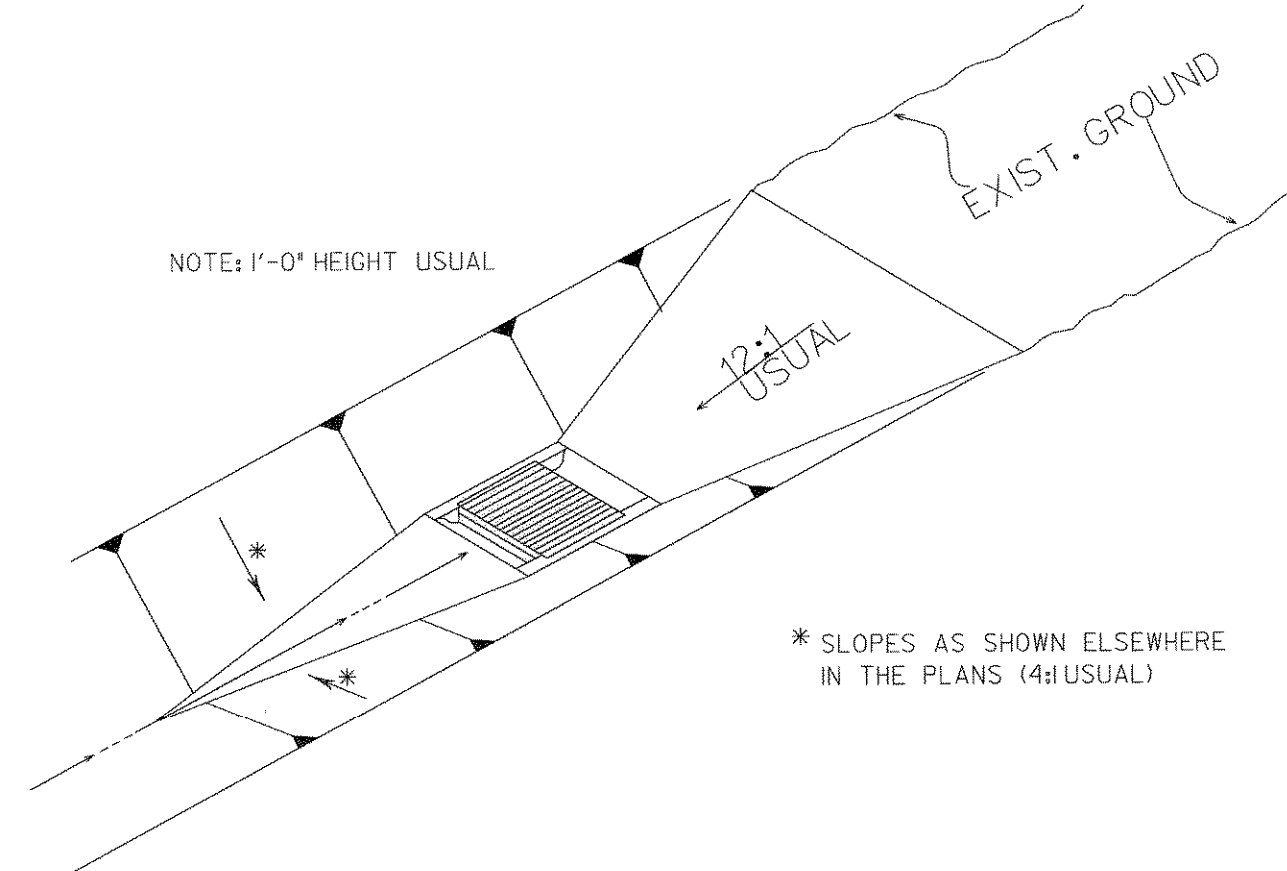
CUT AND RESTORE PAVEMENT DETAILS



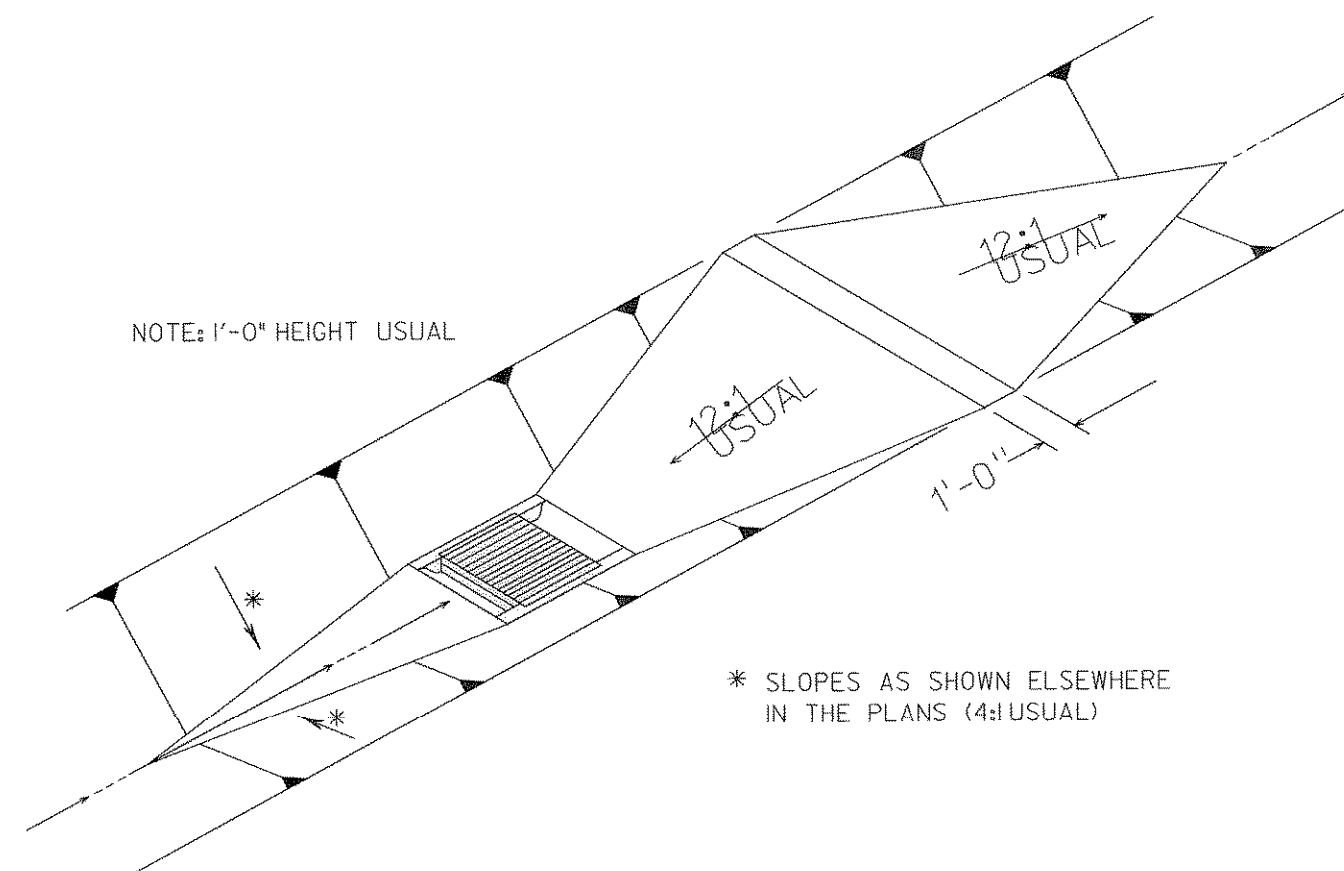
CONCRETE COLLAR DETAILS

TO BE USED AS DIRECTED BY THE ENGINEER

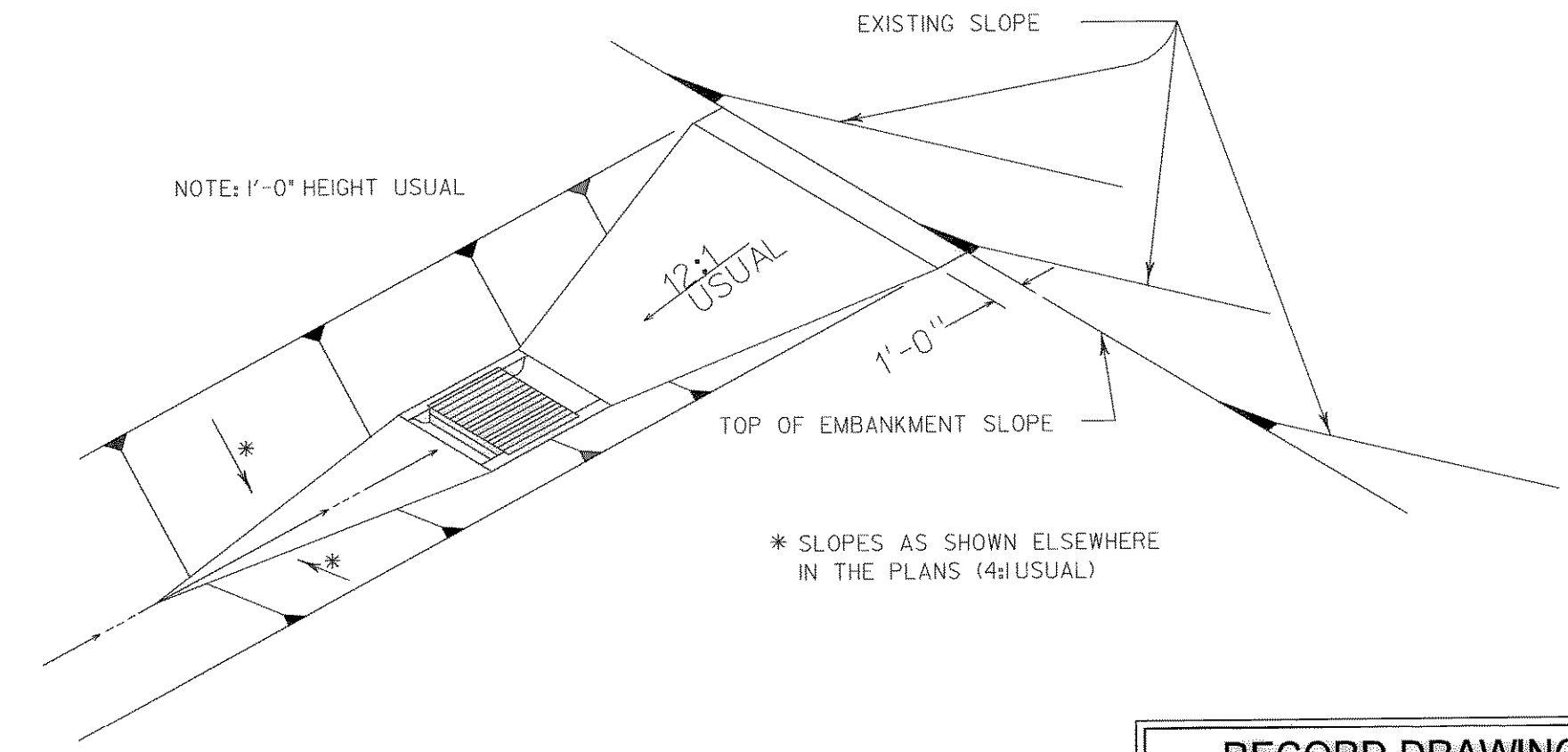
NOTE: PIPE COLLARS WILL NOT BE PAID DIRECTLY, BUT SHALL BE CONSIDERED SUBSIDIARY TO ITEM 465 OR ITEM 464



DITCH BLOCK DETAIL



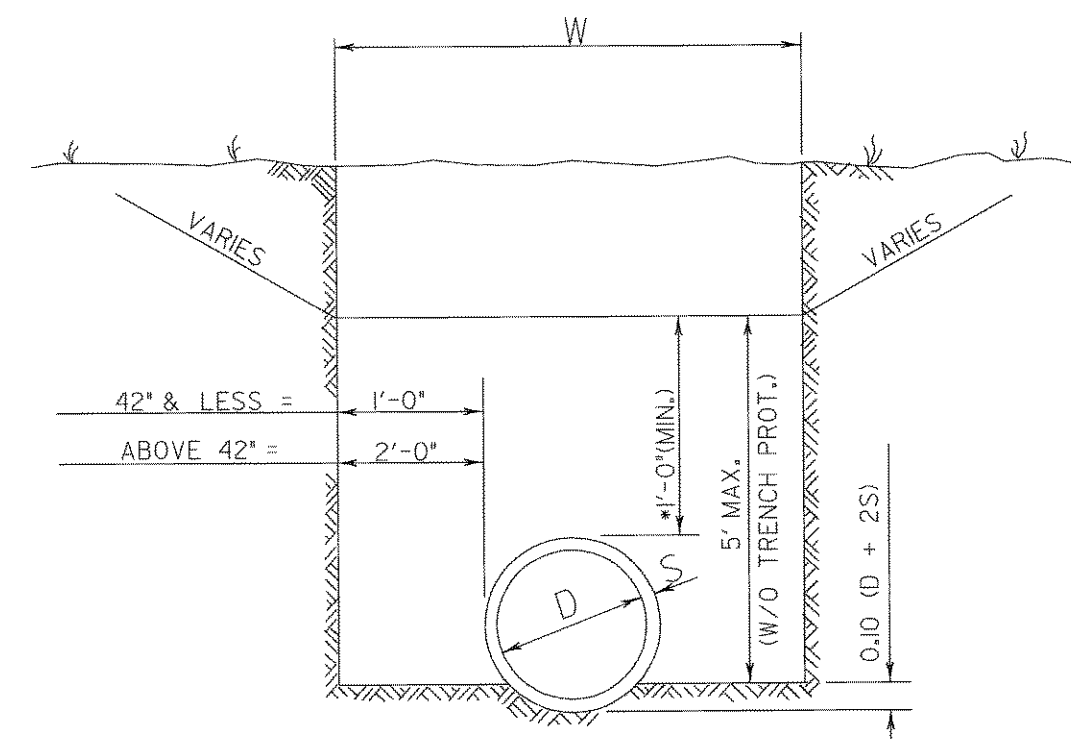
DITCH BLOCK DETAIL



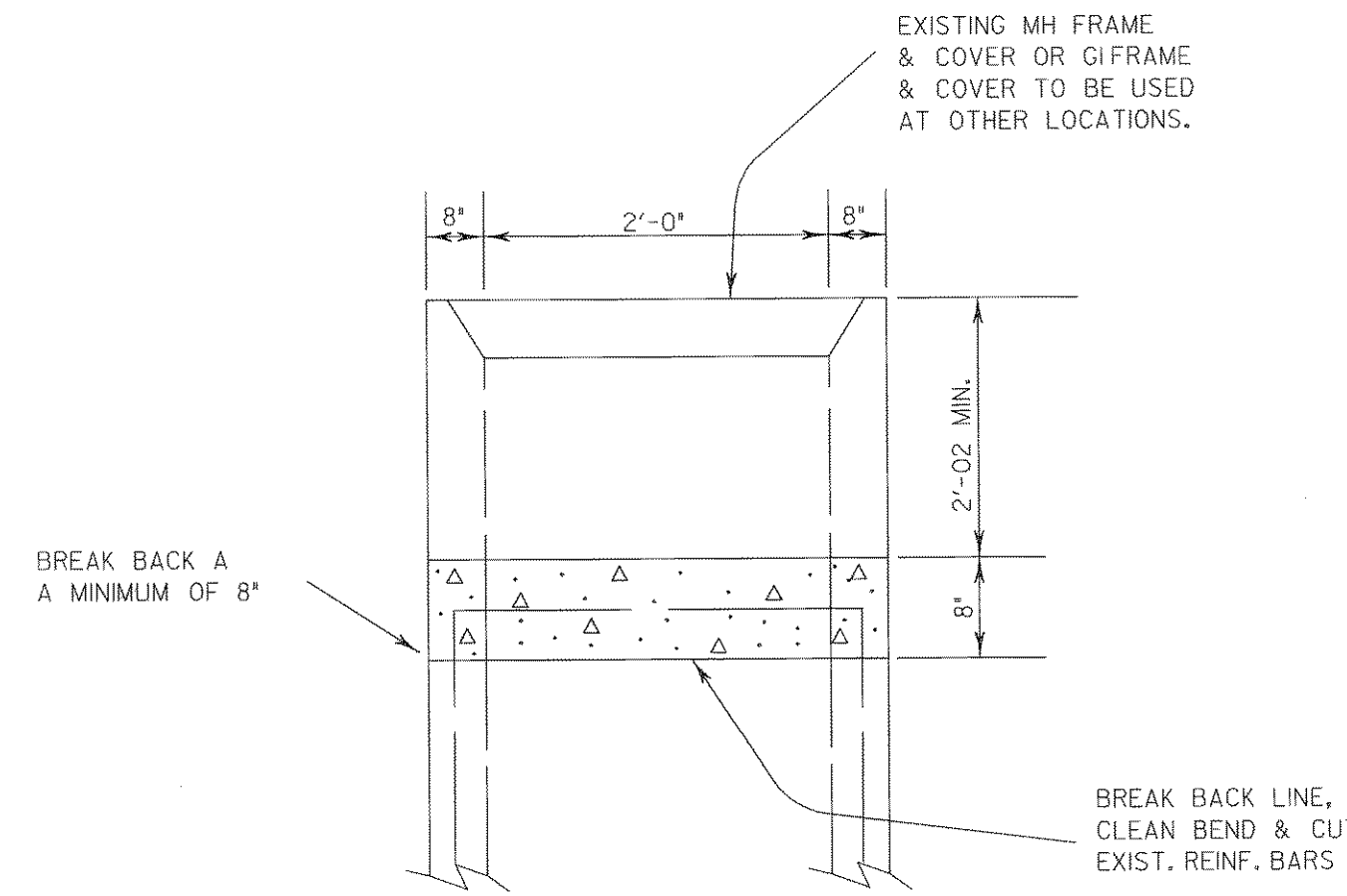
DITCH BLOCK DETAIL

**RECORD DRAWING**  
 This drawing is a compilation of the original sealed engineering drawing and modifications by addenda, change orders and information furnished by the contractor. Information shown that was provided by the contractor and others not associated with the design engineer cannot be verified for accuracy or completeness. Original sealed drawing is on file at the office of AECOM USA Group, Inc., TBPE REG. NO. F-3082

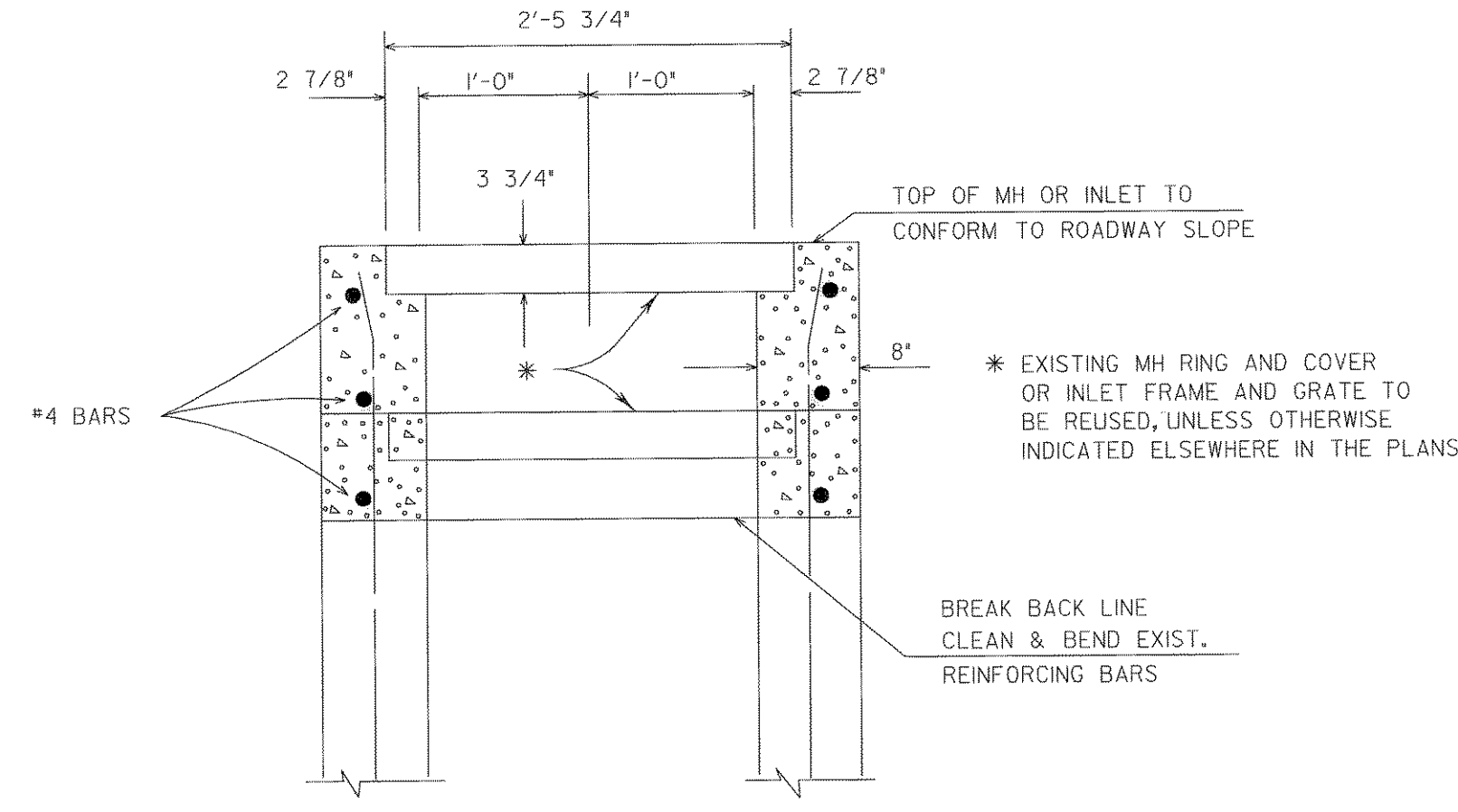
**ORIGINAL DRAWING SEALED & SIGNED BY**  
 Matthew L. Abbe, P.E.  
 TX NO. 92715



CLASS "C" BEDDING EXCEPT AS NOTED  
 \*SEE STANDARD SPECIFICATION ITEM 400, EXCEPT WHERE NEGATIVE PROJECTION IS USED.  
 STRUCTURE EXCAVATION (TRENCH)



INLET AND MANHOLE CAP DETAIL



INLET AND MANHOLE ADJUSTING DETAIL

NO.	REVISION	BY	DATE
<b>205 BYPASS SECTION 1</b>			
<b>MISC. DRAINAGE DETAILS</b>			
I OF 1			
Unit	PW-DAL-FW	Scale:	Horz: AS SHOWN Vert: AS SHOWN
Designed	SKW/MLA	Checked	TCB
Drawn	TCB	Approved	TCB
Date	11/11/2009	Project No.	60004153
Sheet	166	of	217