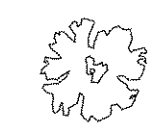
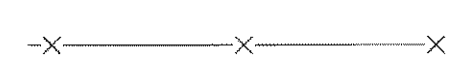

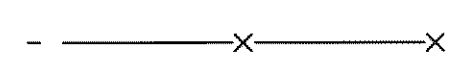

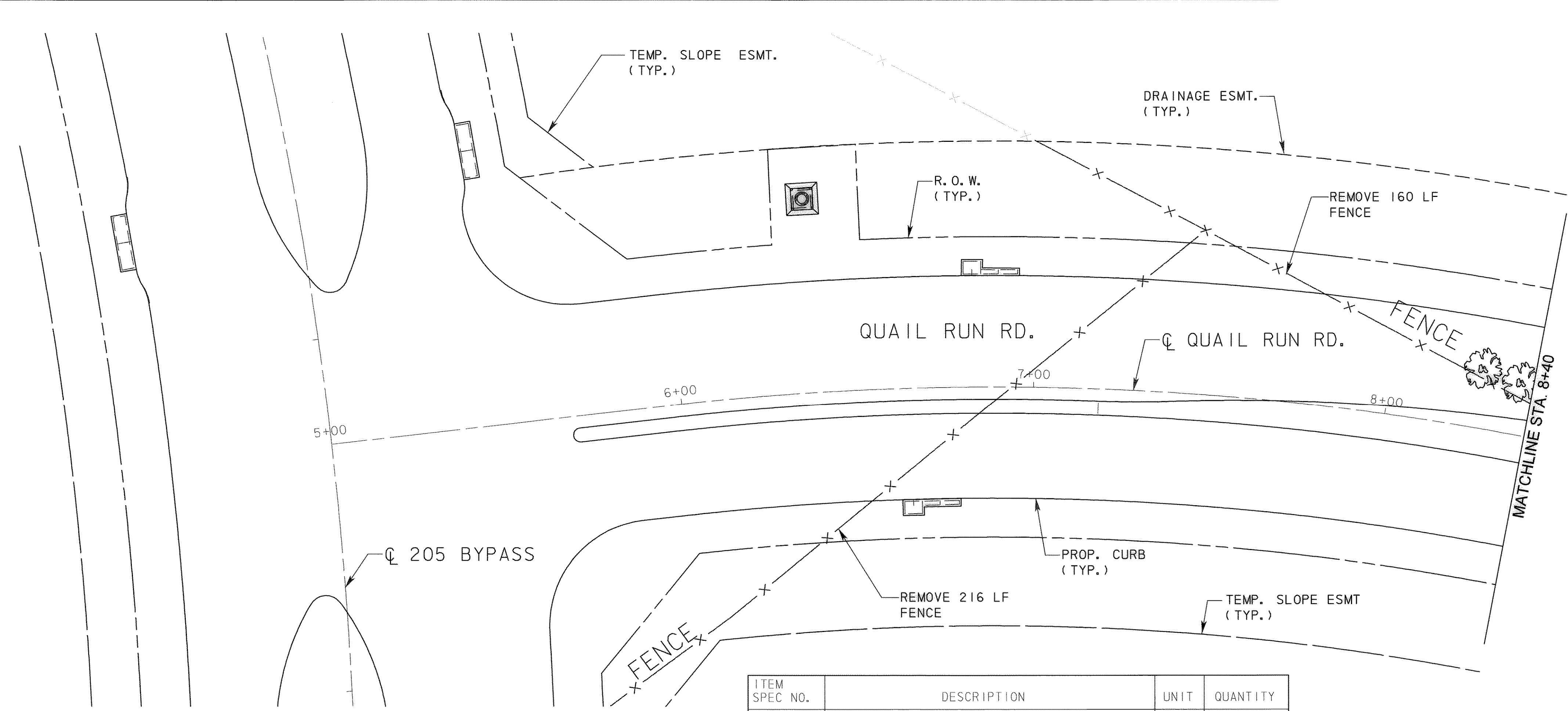


**LEGEND**

-  EXIST. TREE TO REMAIN
-  EXIST. FENCE TO REMAIN
-  EXIST. TREE TO BE REMOVED
-  EXIST. FENCE TO BE REMOVED
-  EXIST. BRUSH & SMALL DIAMETER TREES TO BE REMOVED

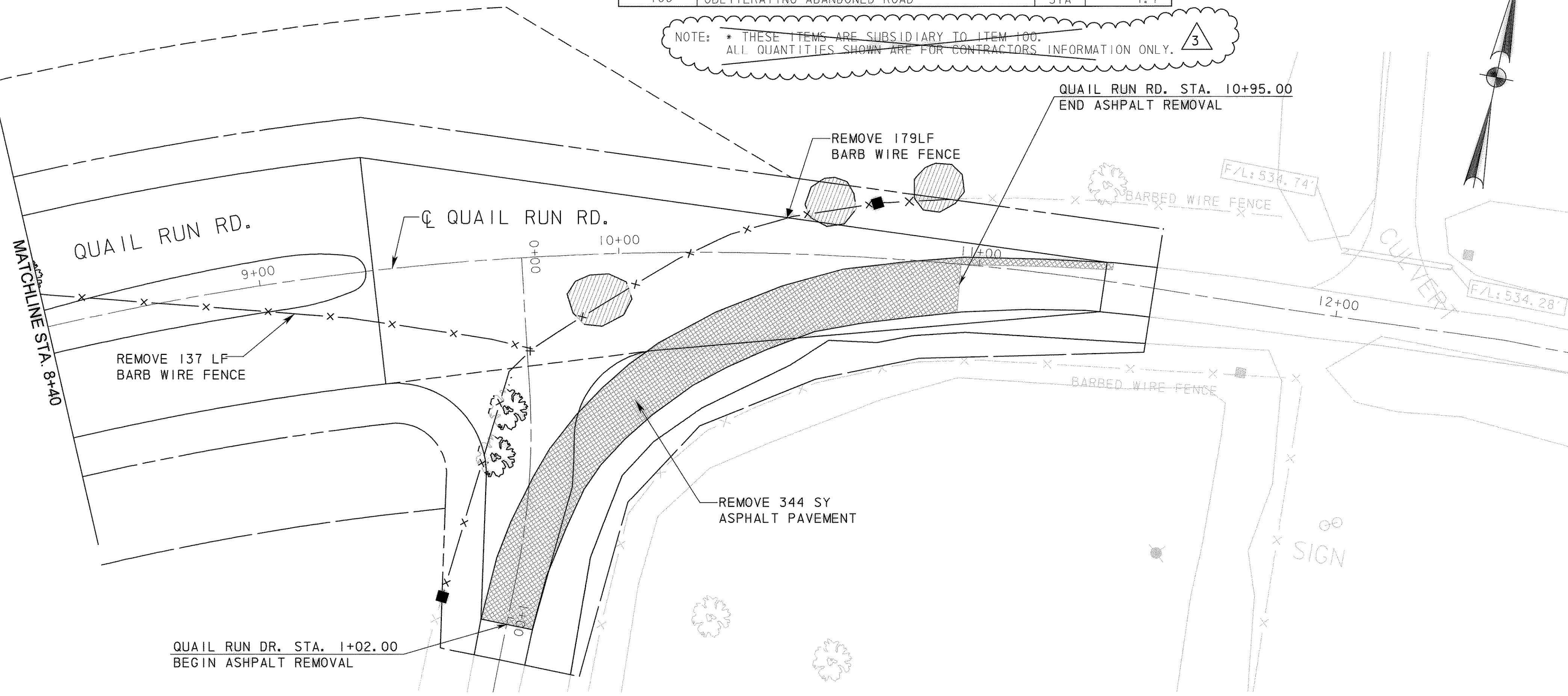
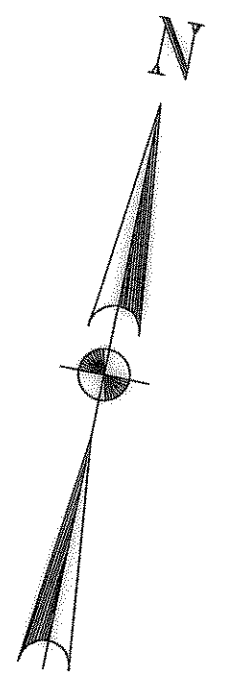
**NOTES:**

1. CONTRACTOR SHALL PAY FOR REMOVALS IN ACCORDANCE WITH PREPARING ROW, ITEM NO. 100.
2. QUANTITIES SHOWN ARE FOR CONTRACTOR'S INFORMATION ONLY. 3
3. FOR UTILITY ADJUSTMENTS, SEE THE UTILITY LAYOUT SHEETS.



ITEM SPEC NO.	DESCRIPTION	UNIT	QUANTITY
100	PREP ROW (STORM DRAIN STRUCTURE REMOVAL)	LF	0
* 105	REMOVING STAB. BASE AND ASPHALT PVMT	SY	270
* 104	REMOVING CONCRETE (CONCRETE PVMT)	SY	0
100	PREP ROW (FENCE REMOVAL)	LF	692
* 106	OBLITERATING ABANDONED ROAD	STA	1.7

NOTE: \* THESE ITEMS ARE SUBSIDIARY TO ITEM 100. ALL QUANTITIES SHOWN ARE FOR CONTRACTORS INFORMATION ONLY. 3



**RECORD DRAWING**  
 This drawing is a compilation of the original sealed engineering drawing and modifications by addenda, change orders and information furnished by the contractor. Information shown that was provided by the contractor and others not associated with the design engineer cannot be verified for accuracy or completeness. Original sealed drawing is on file at the office of AECOM USA Group, Inc., TBPE REG. NO. F-3082.

ORIGINAL DRAWING SEALED & SIGNED BY  
 Matthew L. Abbe, P.E.  
 TX NO. 92715

ADDENDUM NO. 3 - DELETED NOTE	TCB	8/7/07
NO.	REVISION	BY DATE

 **City of Rockwall, Texas**

**205 BYPASS SECTION 1**

**DEMOLITION PLAN QUAIL RUN RD.**

<b>TCB   AECOM</b>			
Unit: PW-DAL-FW	Scale: Horz: AS SHOWN	Date: 11/11/2009	Vert: AS SHOWN
Designed: SKW/MLA	Checked: TCB	Project No: 60004153	
Drawn: TCB	Approved: TCB	Sheet: 37 of 217	

P:\4328x\60004153-205Bypass\CADD\Sheets\Sheet\1-140-00-To-FM592\Record Drawing 10\_7\_09\037Demo-Quail Run.dgn  
 11/11/2009