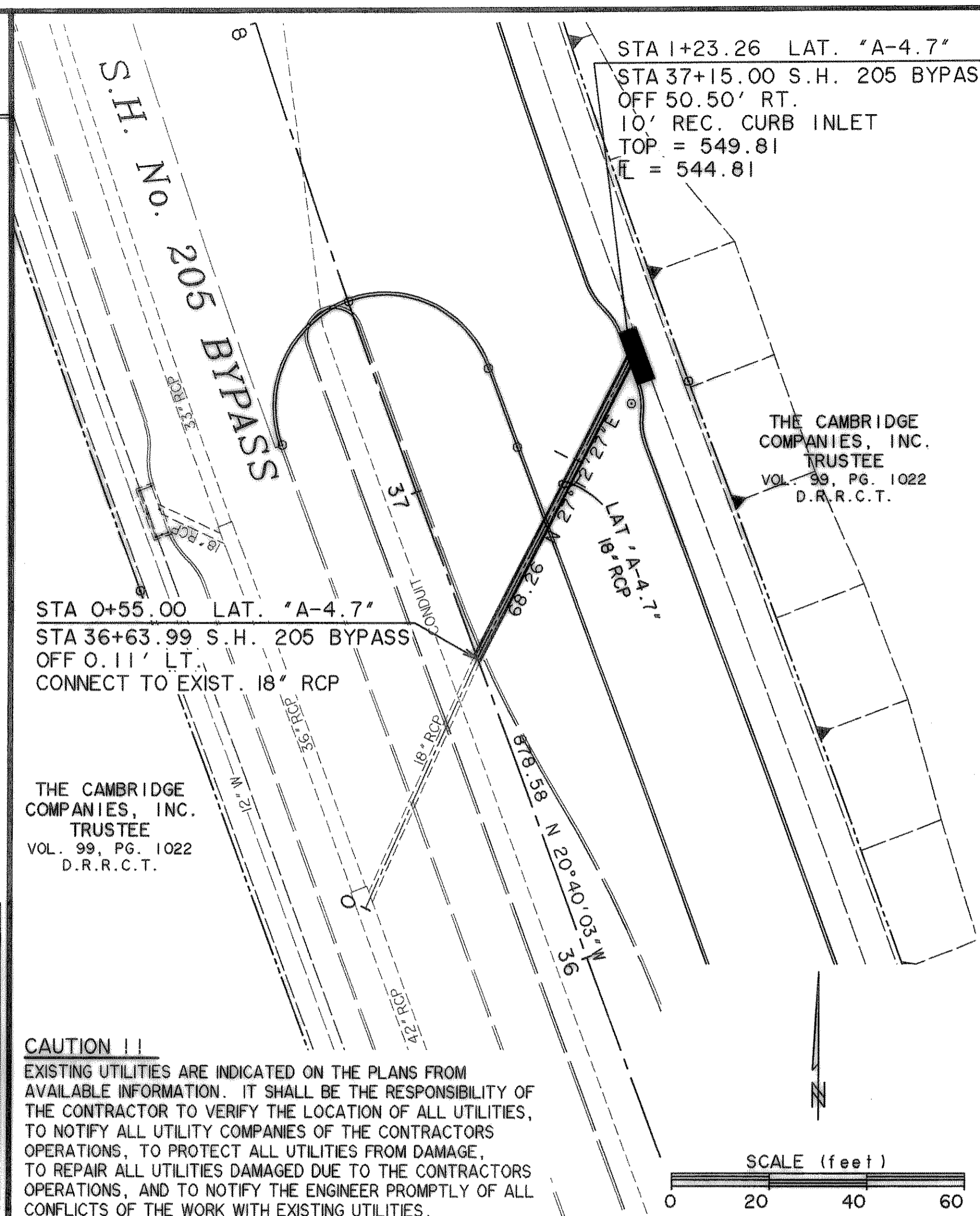
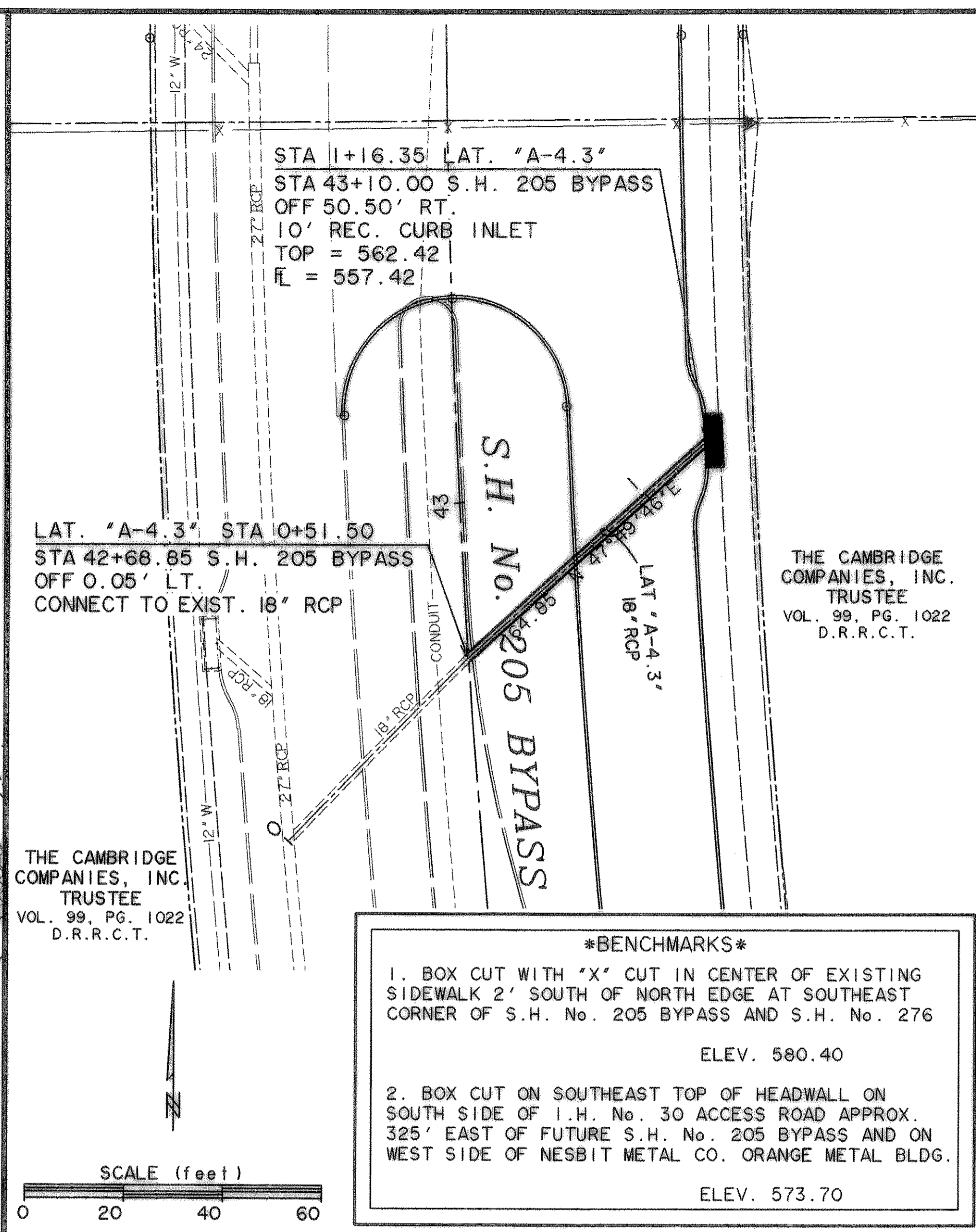
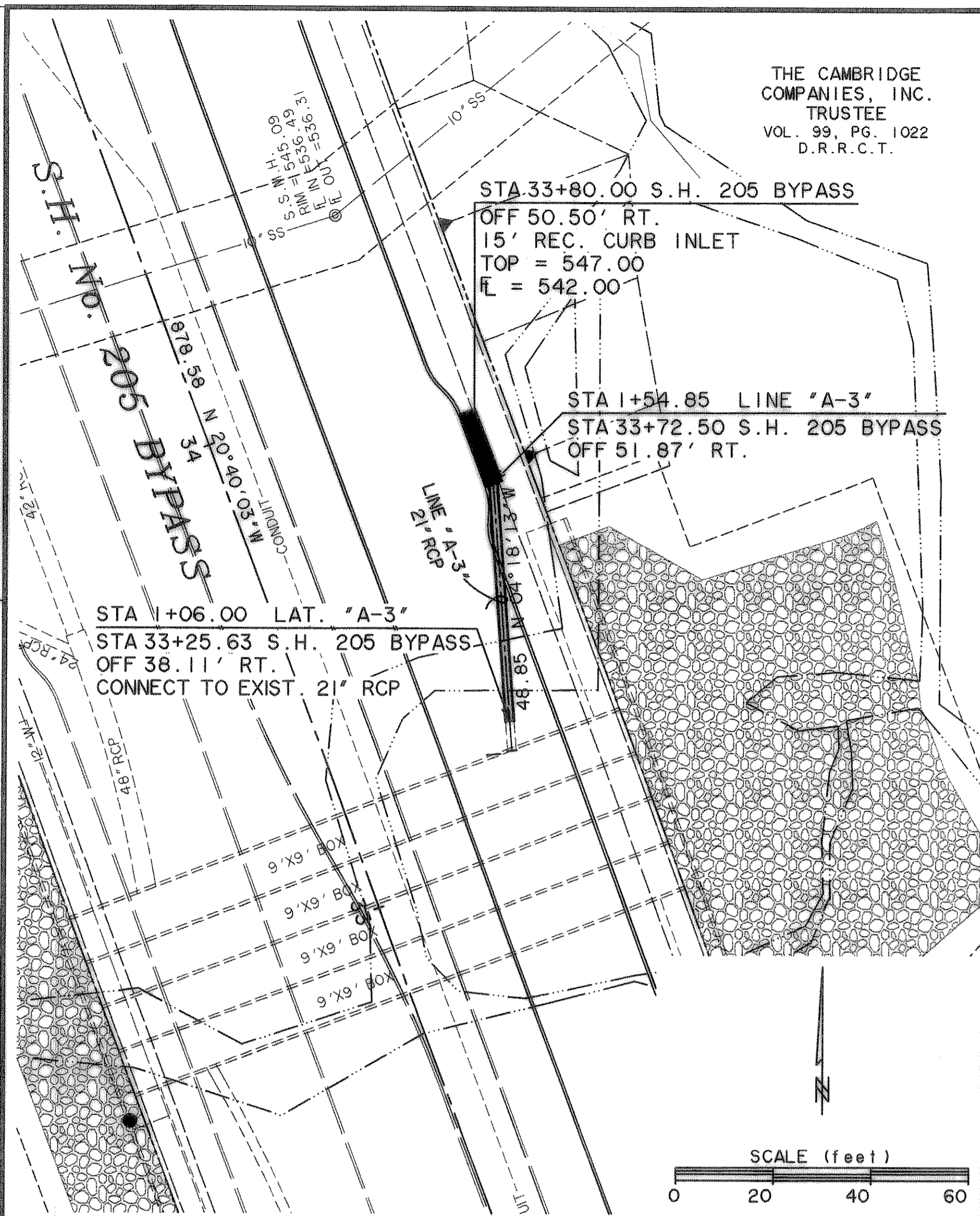


TIME 12:10 FILE: SDPP10-Phase2-04141.dwg

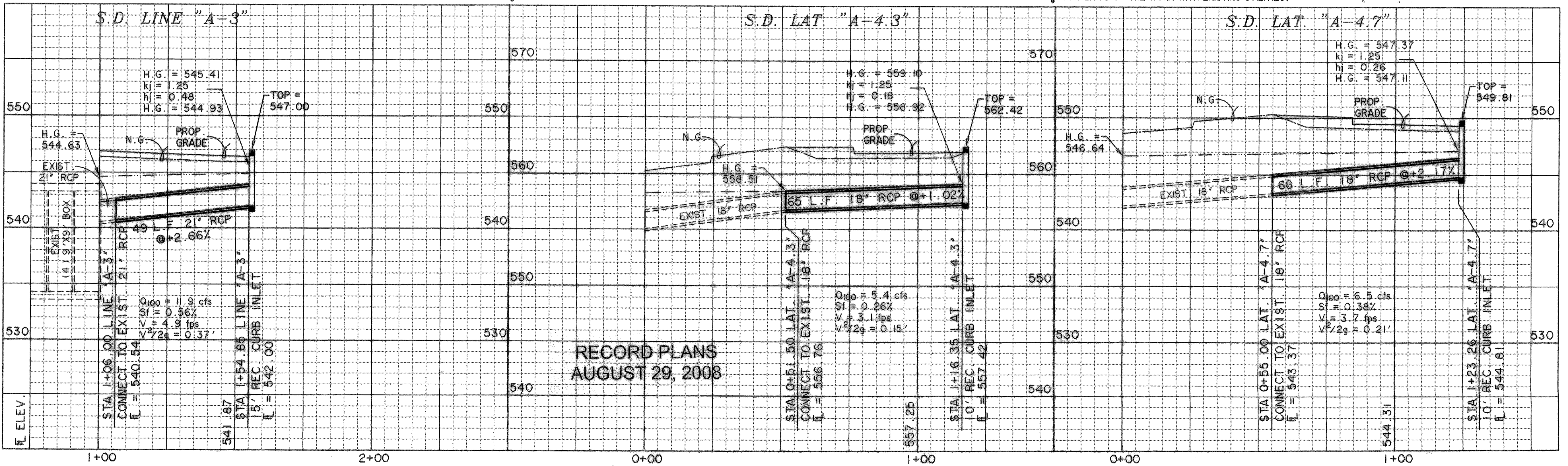


BENCHMARKS

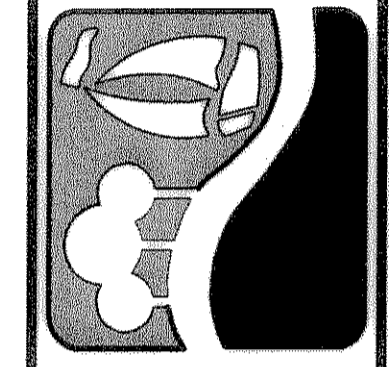
1. BOX CUT WITH 'X' CUT IN CENTER OF EXISTING SIDEWALK 2' SOUTH OF NORTH EDGE AT SOUTHEAST CORNER OF S.H. No. 205 BYPASS AND S.H. No. 276
ELEV. 580.40

2. BOX CUT ON SOUTHEAST TOP OF HEADWALL ON SOUTH SIDE OF I.H. No. 30 ACCESS ROAD APPROX. 325' EAST OF FUTURE S.H. No. 205 BYPASS AND ON WEST SIDE OF NESBIT METAL CO. ORANGE METAL BLDG.
ELEV. 573.70

CAUTION !!
EXISTING UTILITIES ARE INDICATED ON THE PLANS FROM AVAILABLE INFORMATION. IT SHALL BE THE RESPONSIBILITY OF THE CONTRACTOR TO VERIFY THE LOCATION OF ALL UTILITIES, TO NOTIFY ALL UTILITY COMPANIES OF THE CONTRACTORS OPERATIONS, TO PROTECT ALL UTILITIES FROM DAMAGE, TO REPAIR ALL UTILITIES DAMAGED DUE TO THE CONTRACTORS OPERATIONS, AND TO NOTIFY THE ENGINEER PROMPTLY OF ALL CONFLICTS OF THE WORK WITH EXISTING UTILITIES.



PREPARED BY:
WIER & ASSOCIATES, INC.
ENGINEERS SURVEYORS LAND PLANNERS
4300 BELTWAY PLACE SUITE 130 ARLINGTON, TEXAS 76018 METRO (817)467-7700
1380 U.S. HIGHWAY 287 N. SUITE 101 WANSFIELD, TEXAS 76063 METRO (817)477-8700
6849 ELM STREET FRISCO, TEXAS 75004 METRO (214)397-8000
www.wierassociates.com



PHASE II S.H. 205 BYPASS
FROM S.H. 276 TO INTERSTATE 30
STORM DRAIN LINE "A-3",
"A-4.3" & "A-4.7"
PLAN & PROFILE

STATE OF TEXAS
PHILIP L. GRAHAM
94719
LICENSED PROFESSIONAL ENGINEER
12/07/07
COPYRIGHT ©
WIER & ASSOCIATES, INC.
LAST SHEET EDIT
DATE 12-06-2007
WAS 04141
SHEET NO.
D104