

THE CAMBRIDGE COMPANIES, INC. TRUSTEE
VOL. 99, PG. 1022
D.R.R.C.T.

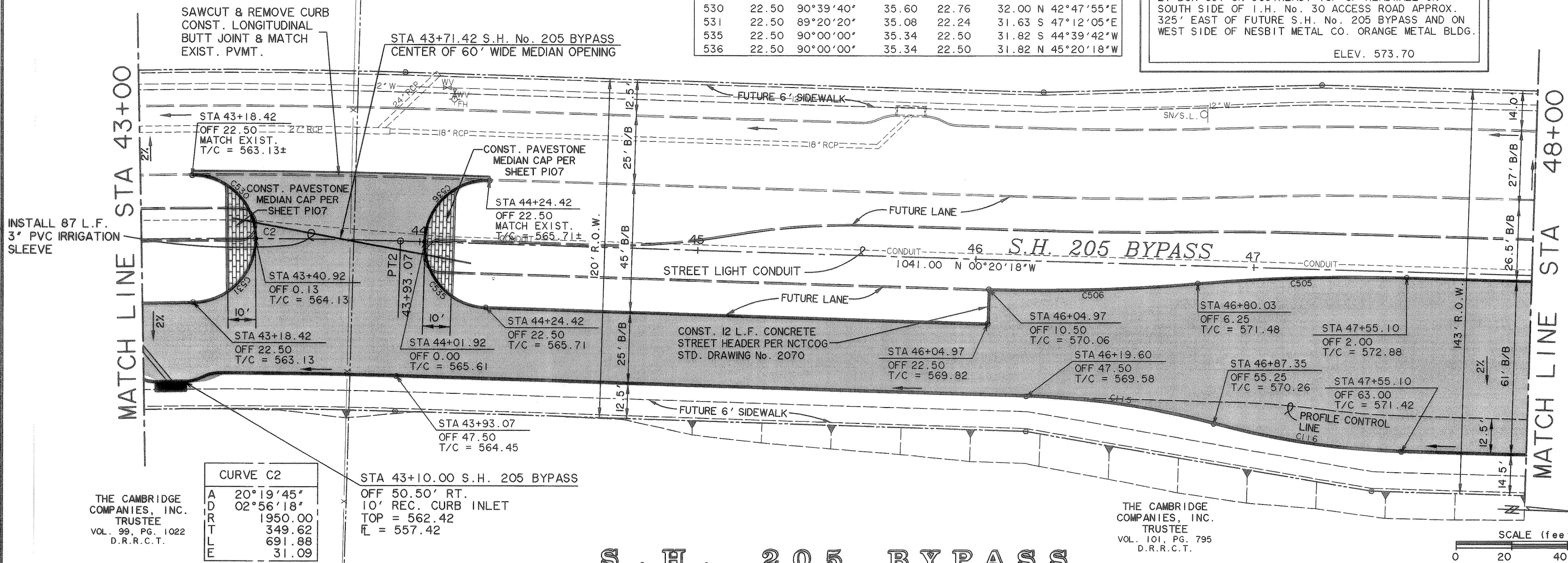
THE CAMBRIDGE COMPANIES, INC. TRUSTEE
VOL. 101, PG. 795
D.R.R.C.T.

CURVE TABLE						
NO.	RADIUS	DELTA	ARC TANGENT	CHORD	BEARING	
115	300.00	13°03'06"	68.34	34.32	68.19 N 06°11'15"E	
116	300.00	13°03'06"	68.34	34.32	68.19 S 06°11'15"W	
505	665.00	06°28'52"	75.22	37.65	75.18 N 03°34'44"W	
506	665.00	06°28'52"	75.22	37.65	75.18 S 03°34'44"E	
530	22.50	90°39'40"	35.60	22.76	32.00 N 42°47'55"E	
531	22.50	89°20'20"	35.08	22.24	31.63 S 47°12'05"E	
535	22.50	90°00'00"	35.34	22.50	31.82 S 44°39'42"W	
536	22.50	90°00'00"	35.34	22.50	31.82 N 45°20'18"W	

BENCHMARKS

1. BOX CUT WITH "X" CUT IN CENTER OF EXISTING SIDEWALK 2' SOUTH OF NORTH EDGE AT SOUTHEAST CORNER OF S.H. No. 205 BYPASS AND S.H. No. 276
ELEV. 580.40

2. BOX CUT ON SOUTHEAST TOP OF HEADWALL ON SOUTH SIDE OF I.H. No. 30 ACCESS ROAD APPROX. 325' EAST OF FUTURE S.H. No. 205 BYPASS AND ON WEST SIDE OF NESBIT METAL CO. ORANGE METAL BLDG.
ELEV. 573.70

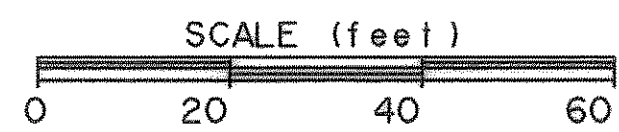


CURVE C2

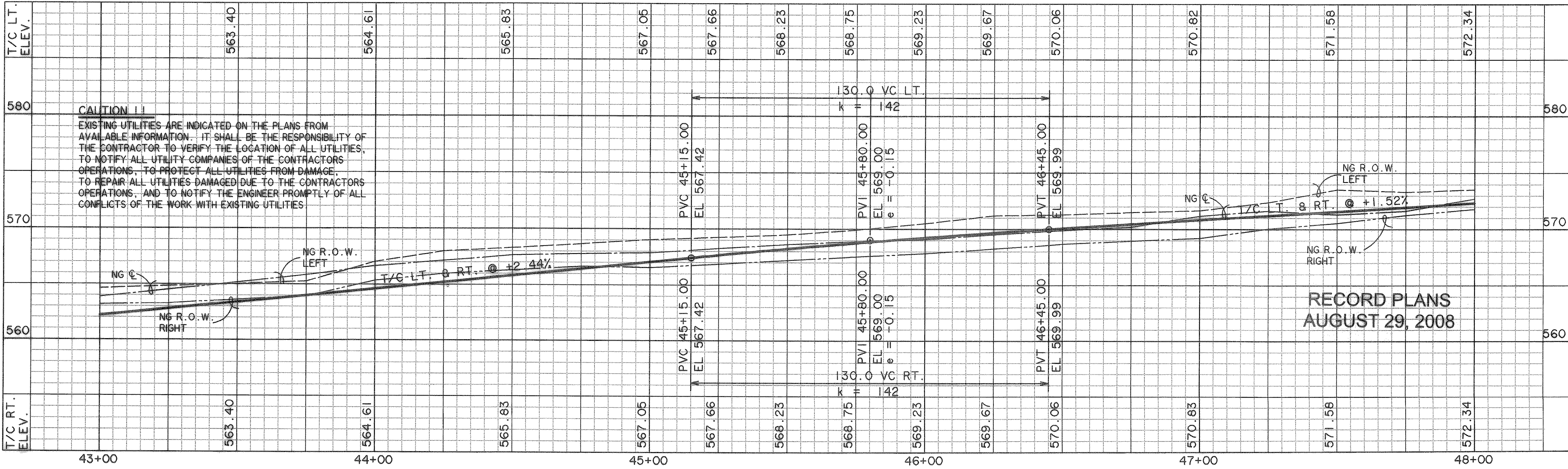
A	20°19'45"
D	02°56'18"
R	1950.00
T	349.62
L	691.88
E	31.09

STA 43+10.00 S.H. 205 BYPASS
OFF 50.50' RT.
10' REC. CURB INLET
TOP = 562.42
FL = 557.42

THE CAMBRIDGE COMPANIES, INC. TRUSTEE
VOL. 101, PG. 795
D.R.R.C.T.

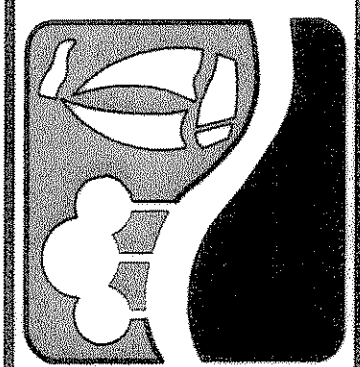


S . H . 2 0 5 B Y P A S S

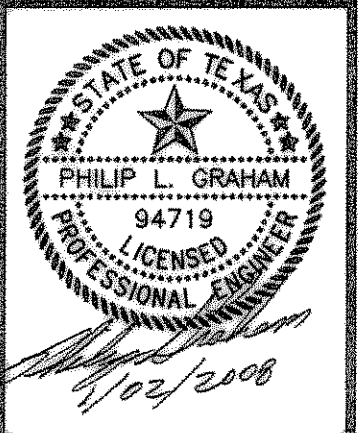


**RECORD PLANS
AUGUST 29, 2008**

PREPARED BY:
WIER & ASSOCIATES, INC.
ENGINEERS SURVEYORS LAND PLANNERS
4300 BELTWAY PLACE, SUITE 130, ARLINGTON, TEXAS 76018 METRO (817)467-7700
1380 U.S. HIGHWAY 287 N., SUITE 107, MARSHFIELD, TEXAS 76663 METRO (817)477-9700
6846 ELM STREET, FRISCO, TEXAS 75034 METRO (214)387-8000
www.WierAssociates.com



**PHASE II S.H. 205 BYPASS
FROM S.H. 276 TO INTERSTATE 30
PAVING
PLAN & PROFILE
STA 43+00 TO 48+00**



COPYRIGHT ©
WIER & ASSOCIATES, INC.
LAST SHEET EDIT
DATE 10/21/2007
WA# 04141
**SHEET NO.
P106**