

2/20/08	MOVED MEDIAN OPENING	PLG	
NO.	DATE	DESCRIPTION	BY

CAUTION !!
 EXISTING UTILITIES ARE INDICATED ON THE PLANS FROM AVAILABLE INFORMATION. IT SHALL BE THE RESPONSIBILITY OF THE CONTRACTOR TO VERIFY THE LOCATION OF ALL UTILITIES, TO NOTIFY ALL UTILITY COMPANIES OF THE CONTRACTORS OPERATIONS, TO PROTECT ALL UTILITIES FROM DAMAGE, TO REPAIR ALL UTILITIES DAMAGED DUE TO THE CONTRACTORS OPERATIONS, AND TO NOTIFY THE ENGINEER PROMPTLY OF ALL CONFLICTS OF THE WORK WITH EXISTING UTILITIES.

CURVE TABLE

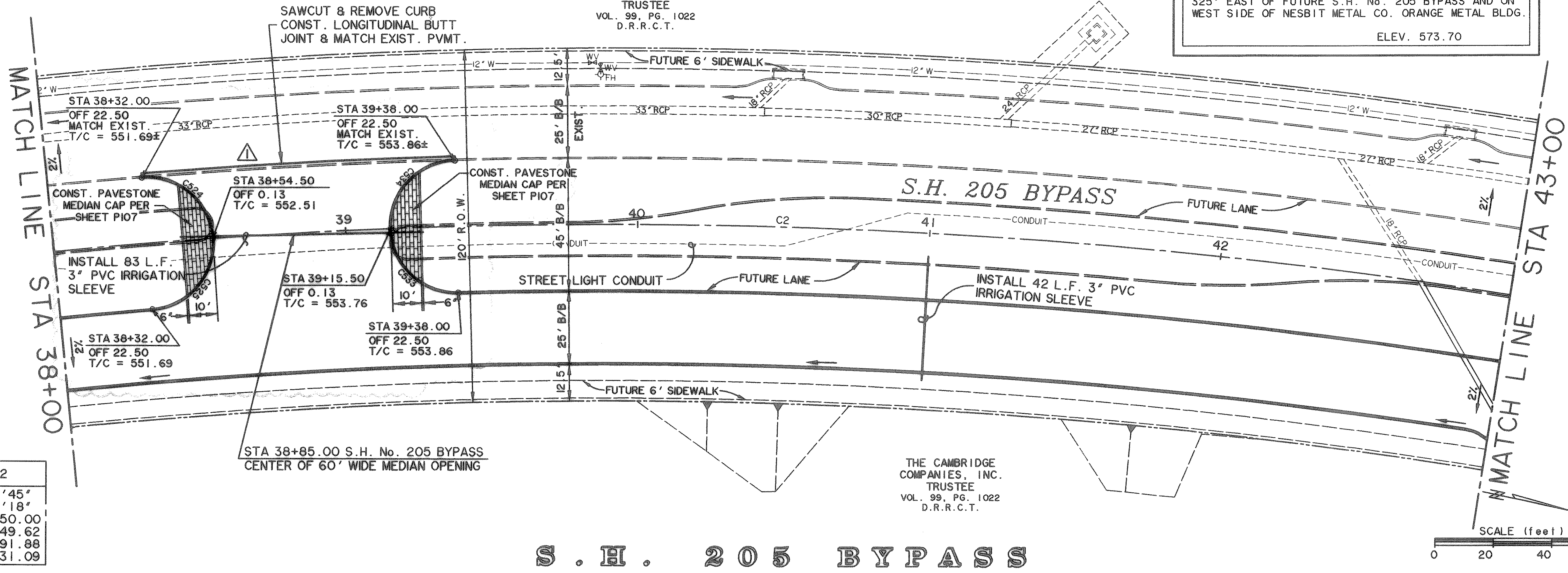
NO.	RADIUS	DELTA	ARC	TANGENT	CHORD	BEARING
524	22.50	90°39'40"	35.60	22.76	32.00	N 28°30'23"E
525	22.50	89°20'20"	35.08	22.24	31.64	S 61°29'37"E
533	22.50	89°20'20"	35.08	22.24	31.64	S 30°57'36"W
534	22.50	90°39'40"	35.60	22.76	32.00	N 59°02'24"W

THE CAMBRIDGE COMPANIES, INC.
 TRUSTEE
 VOL. 99, PG. 1022
 D.R.R.C.T.

BENCHMARK

1. BOX CUT WITH 'X' CUT IN CENTER OF EXISTING SIDEWALK 2' SOUTH OF NORTH EDGE AT SOUTHEAST CORNER OF S.H. No. 205 BYPASS AND S.H. No. 276
 ELEV. 580.40

2. BOX CUT ON SOUTHEAST TOP OF HEADWALL ON SOUTH SIDE OF I.H. No. 30 ACCESS ROAD APPROX. 325' EAST OF FUTURE S.H. No. 205 BYPASS AND ON WEST SIDE OF NESBIT METAL CO. ORANGE METAL BLDG.
 ELEV. 573.70

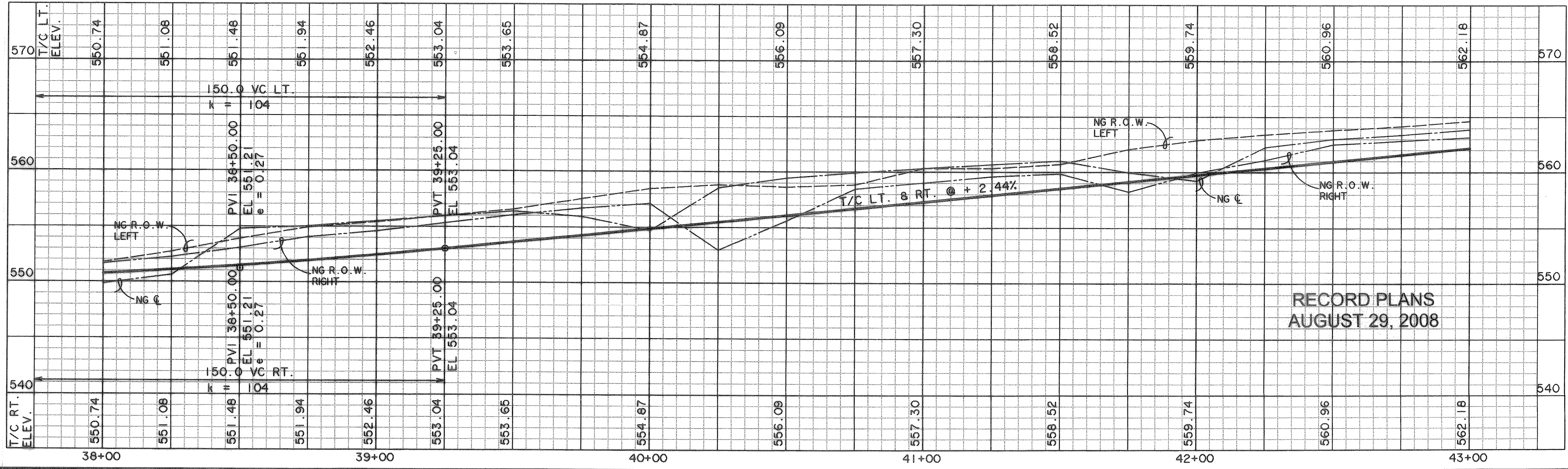
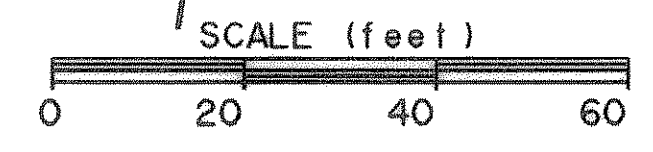


CURVE C2

A	20°19'45"
D	02°56'18"
R	1950.00
T	349.62
M	691.88
F	31.09

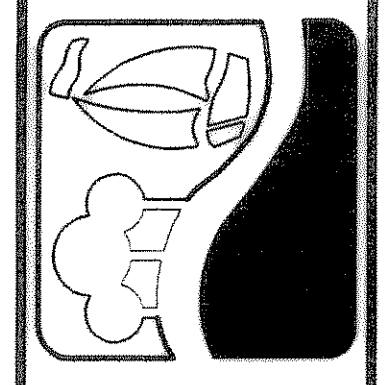
THE CAMBRIDGE COMPANIES, INC.
 TRUSTEE
 VOL. 99, PG. 1022
 D.R.R.C.T.

S . H . 2 0 5 B Y P A S S

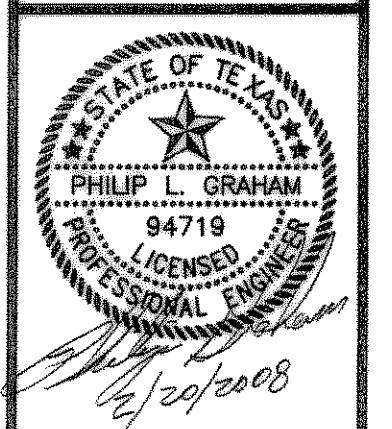


RECORD PLANS
 AUGUST 29, 2008

PREPARED BY:
WIER & ASSOCIATES, INC.
 ENGINEERS SURVEYORS LAND PLANNERS
 4300 BELTWAY PLACE SUITE 130 ARLINGTON, TEXAS 76018 METRO (817)467-7700
 1380 U.S. HIGHWAY 287 N. SUITE 101 WANSFELD, TEXAS 76663 METRO (817)477-4770
 6849 ELM STREET PRISCO, TEXAS 75034 METRO (214)387-8000
 www.wierassociates.com



PHASE II S.H. 205 BYPASS
 FROM S.H. 276 TO INTERSTATE 30
 PAVING
 PLAN & PROFILE
 STA 38+00 TO 43+00



COPYRIGHT ©
 WIER & ASSOCIATES, INC.
 LAST SHEET EDIT
 DATE 02-20-2008
 WAH 04141
 SHEET NO.
 P105

TIME: 17.54 FILE: I_PAVE36-Phase2-04141.dwg