

**\*BENCHMARK\***

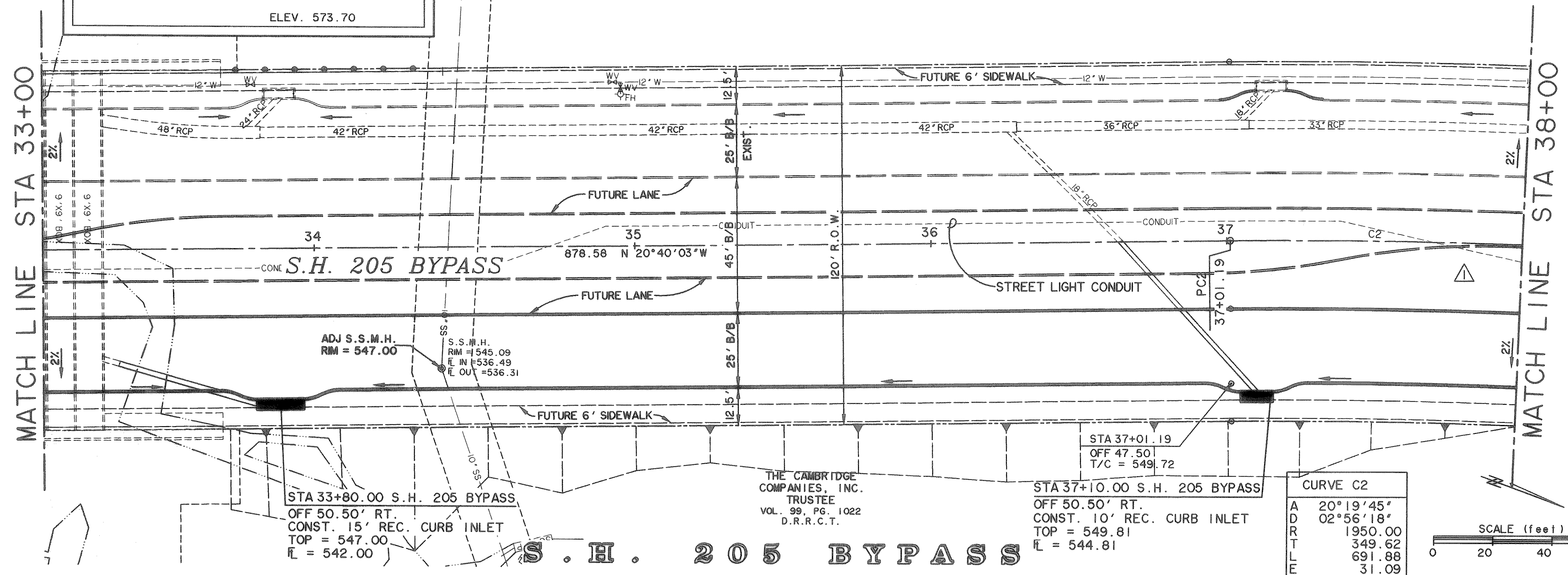
1. BOX CUT WITH "X" CUT IN CENTER OF EXISTING SIDEWALK 2' SOUTH OF NORTH EDGE AT SOUTHEAST CORNER OF S.H. No. 205 BYPASS AND S.H. No. 276  
ELEV. 580.40

2. BOX CUT ON SOUTHEAST TOP OF HEADWALL ON SOUTH SIDE OF I.H. No. 30 ACCESS ROAD APPROX. 325' EAST OF FUTURE S.H. No. 205 BYPASS AND ON WEST SIDE OF NESBIT METAL CO. ORANGE METAL BLDG.  
ELEV. 573.70

**CAUTION !!**  
EXISTING UTILITIES ARE INDICATED ON THE PLANS FROM AVAILABLE INFORMATION. IT SHALL BE THE RESPONSIBILITY OF THE CONTRACTOR TO VERIFY THE LOCATION OF ALL UTILITIES, TO NOTIFY ALL UTILITY COMPANIES OF THE CONTRACTORS OPERATIONS, TO PROTECT ALL UTILITIES FROM DAMAGE, TO REPAIR ALL UTILITIES DAMAGED DUE TO THE CONTRACTORS OPERATIONS, AND TO NOTIFY THE ENGINEER PROMPTLY OF ALL CONFLICTS OF THE WORK WITH EXISTING UTILITIES.

THE CAMBRIDGE COMPANIES, INC. TRUSTEE  
VOL. 99, PG. 1022  
D.R.R.C.T.

NO.	DATE	DESCRIPTION	BY
	2/20/08	MOVED MEDIAN OPENING	PLG



STA 33+80.00 S.H. 205 BYPASS  
OFF 50.50' RT.  
CONST. 15' REC. CURB INLET  
TOP = 547.00  
E = 542.00

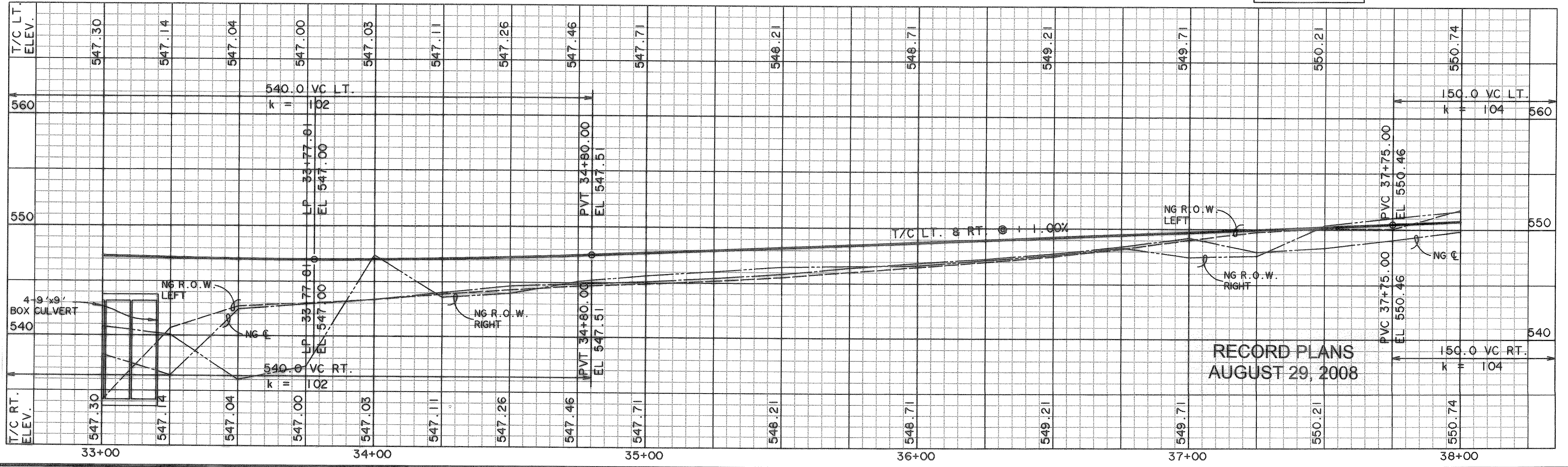
THE CAMBRIDGE COMPANIES, INC. TRUSTEE  
VOL. 99, PG. 1022  
D.R.R.C.T.

STA 37+01.19  
OFF 47.50'  
T/C = 549.72

STA 37+10.00 S.H. 205 BYPASS  
OFF 50.50' RT.  
CONST. 10' REC. CURB INLET  
TOP = 549.81  
E = 544.81

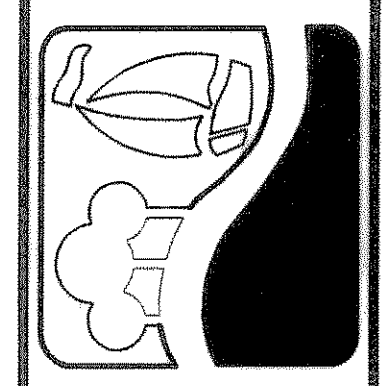
**CURVE C2**

A	20°19'45"
D	02°56'18"
R	1950.00
L	349.62
T	691.88
E	31.09

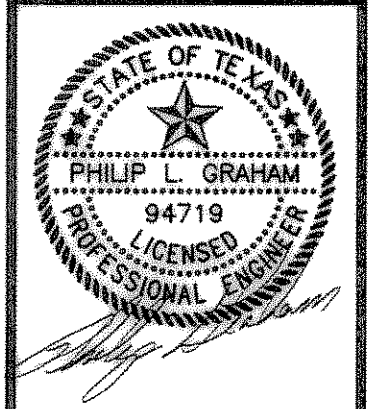


RECORD PLANS  
AUGUST 29, 2008

PREPARED BY:  
**WIER & ASSOCIATES, INC.**  
ENGINEERS SURVEYORS LAND PLANNERS  
4300 BELTWAY PLACE SUITE 130 ARLINGTON, TEXAS 76018 METRO (817)467-7700  
1380 U.S. HIGHWAY 287 N. SUITE 101 MANSFIELD, TEXAS 76063 METRO (817)477-8700  
6849 ELM STREET FRISCO, TEXAS 75034 METRO (214)387-8800  
www.wierassociates.com



PHASE II S.H. 205 BYPASS  
FROM S.H. 276 TO INTERSTATE 30  
PAVING  
PLAN & PROFILE  
STA 33+00 TO 38+00



COPYRIGHT ©  
WIER & ASSOCIATES, INC.  
LAST SHEET EDIT  
DATE 02-20-2008  
WA# 04141  
SHEET NO.  
P104