

| CURVE TABLE |        |           |             |       |         |              |
|-------------|--------|-----------|-------------|-------|---------|--------------|
| NO.         | RADIUS | DELTA     | ARC TANGENT | CHORD | BEARING |              |
| 514         | 22.50  | 89°29'04" | 35.14       | 22.30 | 31.68   | N 31°46'23"E |
| 515         | 22.50  | 90°30'56" | 35.55       | 22.70 | 31.96   | S 58°13'37"E |
| 522         | 22.50  | 90°30'56" | 35.55       | 22.70 | 31.96   | S 29°18'34"W |
| 523         | 22.50  | 89°29'04" | 35.14       | 22.30 | 31.68   | N 60°41'26"W |

THE CAMBRIDGE COMPANIES, INC. TRUSTEE  
VOL. 99, PG. 1022  
D.R.R.C.T.

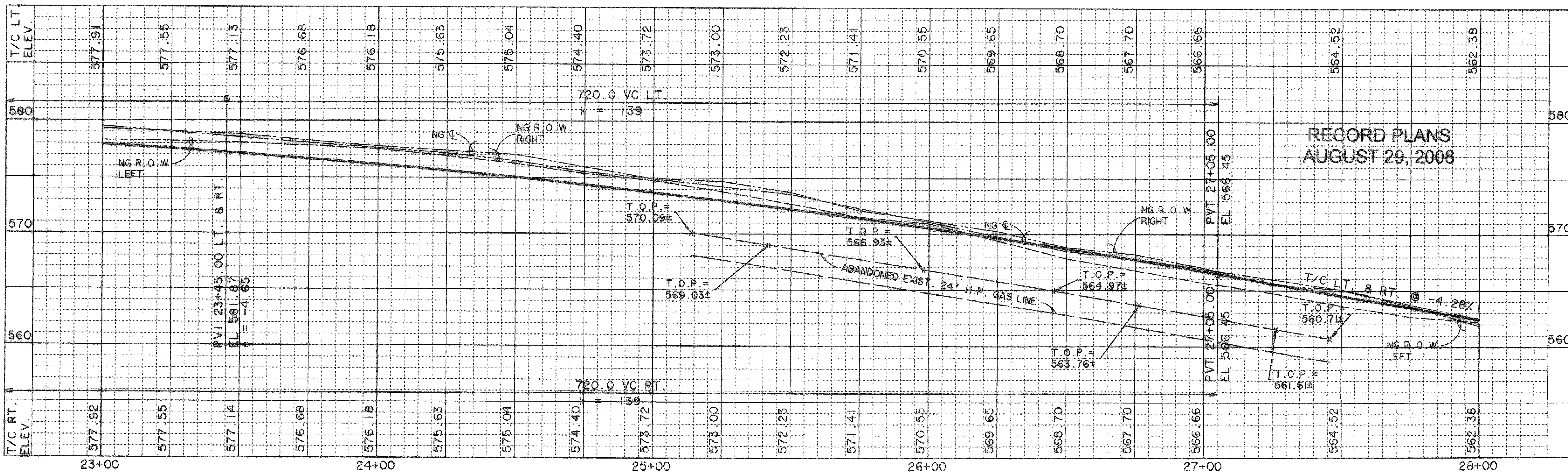
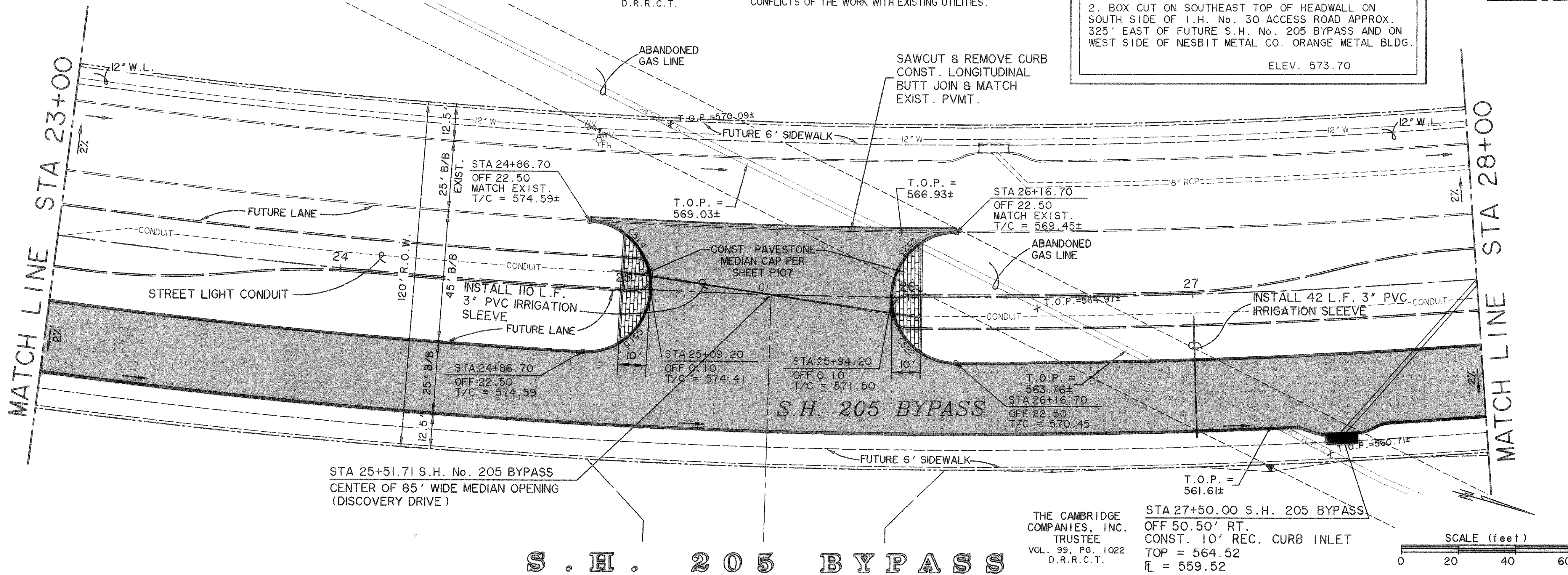
**CAUTION !!**

EXISTING UTILITIES ARE INDICATED ON THE PLANS FROM AVAILABLE INFORMATION. IT SHALL BE THE RESPONSIBILITY OF THE CONTRACTOR TO VERIFY THE LOCATION OF ALL UTILITIES, TO NOTIFY ALL UTILITY COMPANIES OF THE CONTRACTOR'S OPERATIONS, TO PROTECT ALL UTILITIES FROM DAMAGE, TO REPAIR ALL UTILITIES DAMAGED DUE TO THE CONTRACTOR'S OPERATIONS, AND TO NOTIFY THE ENGINEER PROMPTLY OF ALL CONFLICTS OF THE WORK WITH EXISTING UTILITIES.

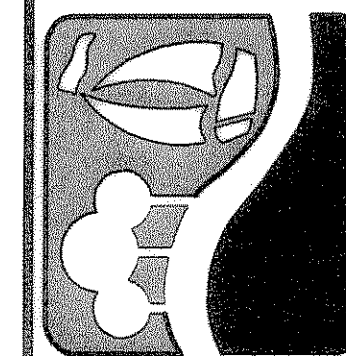
**\*BENCHMARKS\***

- BOX CUT WITH 'X' CUT IN CENTER OF EXISTING SIDEWALK 2' SOUTH OF NORTH EDGE AT SOUTHEAST CORNER OF S.H. No. 205 BYPASS AND S.H. No. 276  
ELEV. 580.40
- BOX CUT ON SOUTHEAST TOP OF HEADWALL ON SOUTH SIDE OF I.H. No. 30 ACCESS ROAD APPROX. 325' EAST OF FUTURE S.H. No. 205 BYPASS AND ON WEST SIDE OF NESBIT METAL CO. ORANGE METAL BLDG.  
ELEV. 573.70

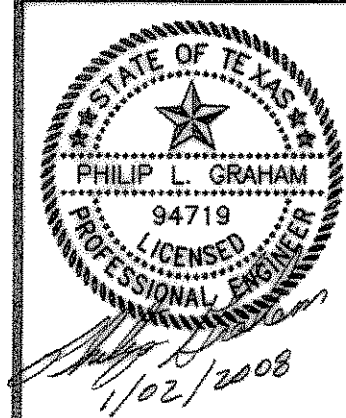
| CURVE C1 |           |
|----------|-----------|
| A        | 19°35'45" |
| D        | 02°17'31" |
| R        | 2500.00   |
| L        | 431.73    |
| T        | 855.03    |
| M        | 37.00     |



PREPARED BY:  
**WIER & ASSOCIATES, INC.**  
ENGINEERS SURVEYORS LAND PLANNERS  
4300 BELWAY PLACE SUITE 130 ARLINGTON, TEXAS 76016 METRO (817)467-7700  
1380 U.S. HIGHWAY 287 N. SUITE 101 MANSFIELD, TEXAS 76063 METRO (817)477-8700  
6849 ELM STREET FRSICO, TEXAS 75034 METRO (214)397-8000  
www.WierAssociates.com



PHASE II S.H. 205 BYPASS  
FROM S.H. 276 TO INTERSTATE 30  
PAVING  
PLAN & PROFILE  
STA 23+00 TO 28+00



COPYRIGHT ©  
WIER & ASSOCIATES, INC.  
LAST SHEET EDIT  
DATE 12-31-2007  
WA# 04141  
**SHEET NO. P102**