

NO.	RADIUS	DELTA	ARC TANGENT	CHORD BEARING
511	10.50	89°45'34"	16.45 10.46	14.82 N 42°41'03"E
512	10.50	90°14'26"	16.54 10.54	14.88 S 47°18'57"E
517	22.50	90°30'56"	35.55 22.70	31.96 S 40°54'29"W
518	22.50	89°29'04"	35.14 22.30	31.68 N 49°05'31"W

THE CAMBRIDGE COMPANIES, INC.  
TRUSTEE  
VOL. 99, PG. 1022  
D.R.R.C.T.

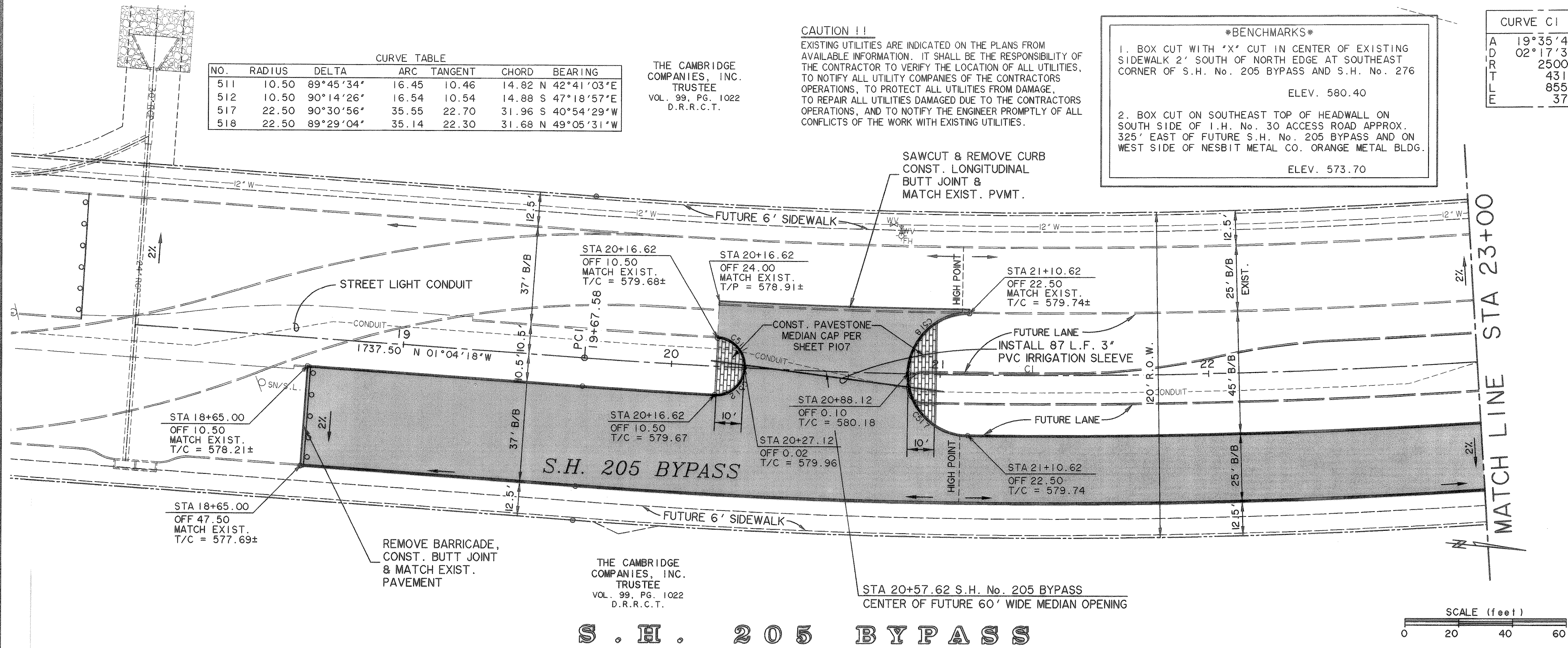
**CAUTION !!**

EXISTING UTILITIES ARE INDICATED ON THE PLANS FROM AVAILABLE INFORMATION. IT SHALL BE THE RESPONSIBILITY OF THE CONTRACTOR TO VERIFY THE LOCATION OF ALL UTILITIES, TO NOTIFY ALL UTILITY COMPANIES OF THE CONTRACTORS OPERATIONS, TO PROTECT ALL UTILITIES FROM DAMAGE, TO REPAIR ALL UTILITIES DAMAGED DUE TO THE CONTRACTORS OPERATIONS, AND TO NOTIFY THE ENGINEER PROMPTLY OF ALL CONFLICTS OF THE WORK WITH EXISTING UTILITIES.

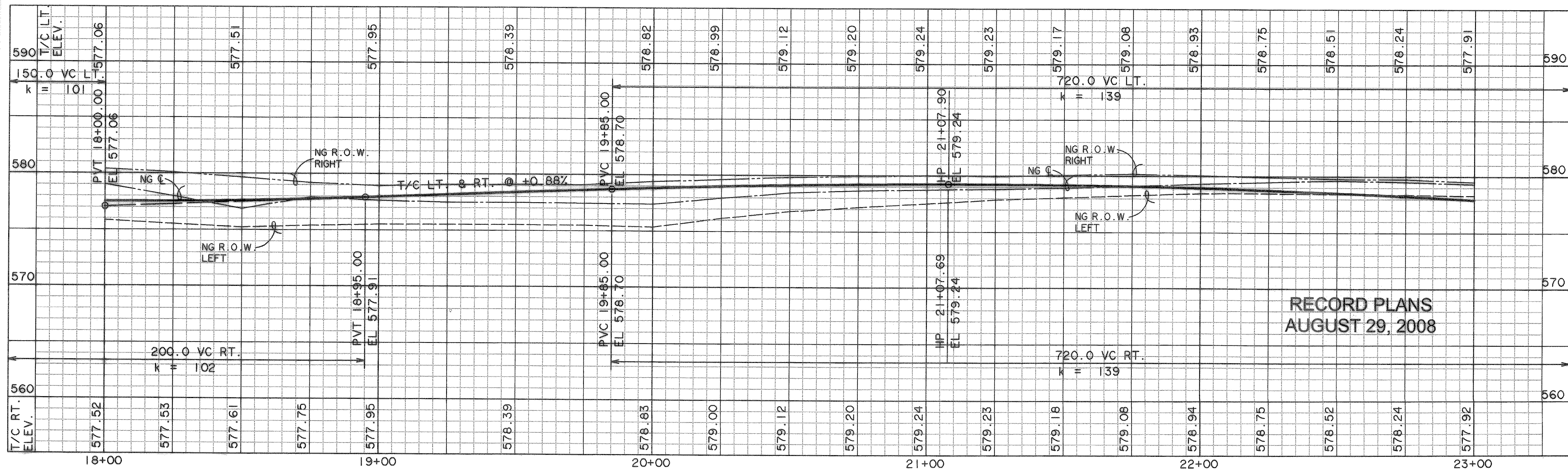
**\*BENCHMARK\***

- BOX CUT WITH "X" CUT IN CENTER OF EXISTING SIDEWALK 2' SOUTH OF NORTH EDGE AT SOUTHEAST CORNER OF S.H. No. 205 BYPASS AND S.H. No. 276  
ELEV. 580.40
- BOX CUT ON SOUTHEAST TOP OF HEADWALL ON SOUTH SIDE OF I.H. No. 30 ACCESS ROAD APPROX. 325' EAST OF FUTURE S.H. No. 205 BYPASS AND ON WEST SIDE OF NESBIT METAL CO. ORANGE METAL BLDG.  
ELEV. 573.70

CURVE CI	
A	19°35'45"
D	02°17'31"
R	2500.00
T	431.73
M	855.03
	37.00

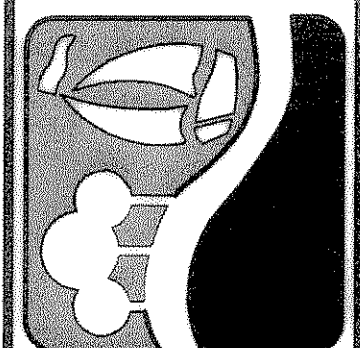


**S . H . 2 0 5 B Y P A S S**

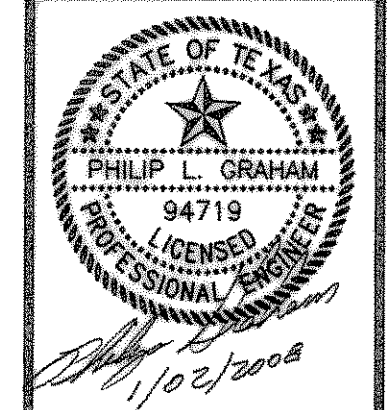


**RECORD PLANS  
AUGUST 29, 2008**

PREPARED BY:  
**VIA WIER & ASSOCIATES, INC.**  
ENGINEERS SURVEYORS LAND PLANNERS  
4300 BELWAY PLACE SUITE 130 ARLINGTON, TEXAS 76010 METRO (817)467-7700  
1380 U.S. HIGHWAY 287 N. SUITE 101 MARSHFIELD, TEXAS 76063 METRO (817)477-8700  
6649 ELM STREET FRISCO, TEXAS 75034 METRO (214)387-8000  
www.ViaWier.com



**PHASE II S.H. 205 BYPASS  
FROM S.H. 276 TO INTERSTATE 30  
PAVING  
PLAN & PROFILE  
STA 18+00 TO 23+00**



COPYRIGHT ©  
WIER & ASSOCIATES, INC.  
LAST SHEET EDIT  
DATE 12-31-2007  
WA# 0414  
**SHEET NO.  
P101**