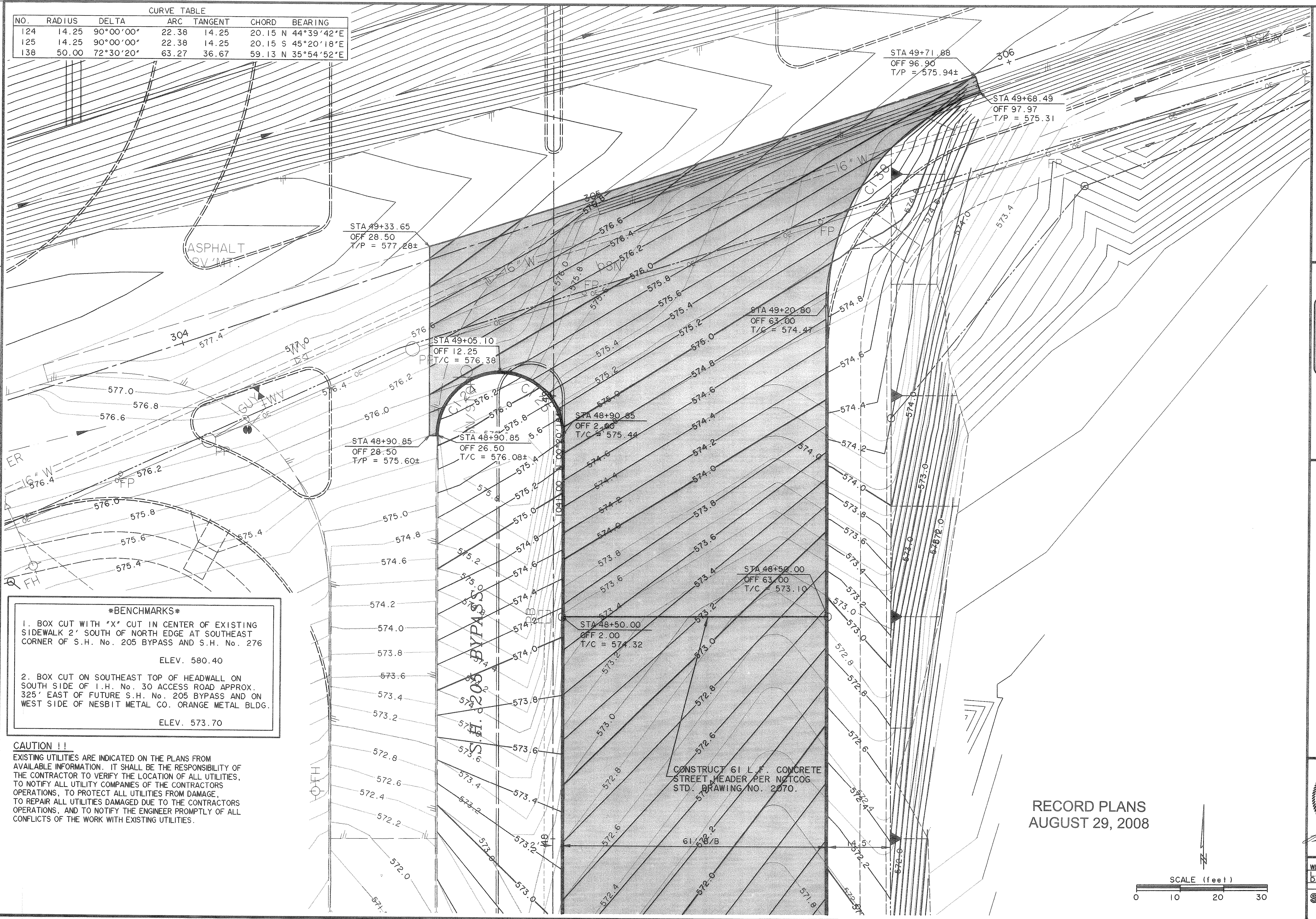


| CURVE TABLE | | | | | | |
|-------------|--------|-----------|-------|---------|-------|--------------|
| NO. | RADIUS | DELTA | ARC | TANGENT | CHORD | BEARING |
| 124 | 14.25 | 90°00'00" | 22.38 | 14.25 | 20.15 | N 44°39'42"E |
| 125 | 14.25 | 90°00'00" | 22.38 | 14.25 | 20.15 | S 45°20'18"E |
| 138 | 50.00 | 72°30'20" | 63.27 | 36.67 | 59.13 | N 35°54'52"E |



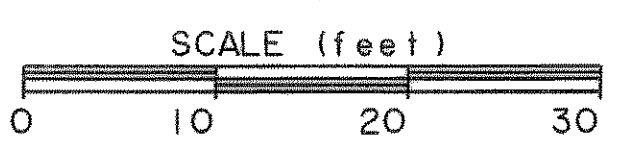
BENCHMARKS

- BOX CUT WITH "X" CUT IN CENTER OF EXISTING SIDEWALK 2' SOUTH OF NORTH EDGE AT SOUTHEAST CORNER OF S.H. No. 205 BYPASS AND S.H. No. 276
ELEV. 580.40
- BOX CUT ON SOUTHEAST TOP OF HEADWALL ON SOUTH SIDE OF I.H. No. 30 ACCESS ROAD APPROX. 325' EAST OF FUTURE S.H. No. 205 BYPASS AND ON WEST SIDE OF NESBIT METAL CO. ORANGE METAL BLDG.
ELEV. 573.70

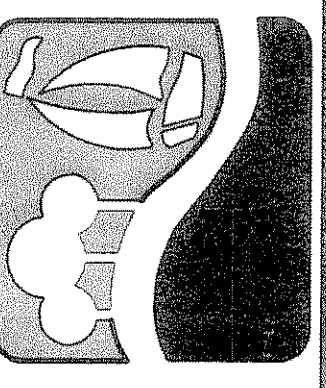
CAUTION !!
EXISTING UTILITIES ARE INDICATED ON THE PLANS FROM AVAILABLE INFORMATION. IT SHALL BE THE RESPONSIBILITY OF THE CONTRACTOR TO VERIFY THE LOCATION OF ALL UTILITIES, TO NOTIFY ALL UTILITY COMPANIES OF THE CONTRACTORS OPERATIONS, TO PROTECT ALL UTILITIES FROM DAMAGE, TO REPAIR ALL UTILITIES DAMAGED DUE TO THE CONTRACTORS OPERATIONS, AND TO NOTIFY THE ENGINEER PROMPTLY OF ALL CONFLICTS OF THE WORK WITH EXISTING UTILITIES.

CONSTRUCT 61 L.F. CONCRETE STREET HEADER PER NOTCOG STD. DRAWING NO. 2070.

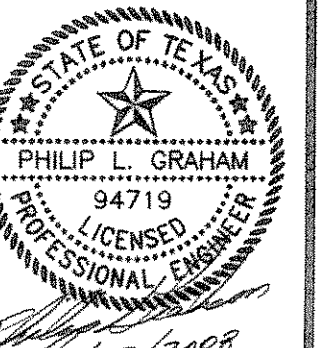
RECORD PLANS
AUGUST 29, 2008



PREPARED BY:
VIA WIER & ASSOCIATES, INC.
ENGINEERS SURVEYORS LAND PLANNERS
4300 BELTWAY PLACE SUITE 130 ARLINGTON, TEXAS 76018 METRO (817)467-7700
1300 U.S. HIGHWAY 287 N. SUITE 101 WAKESFIELD, TEXAS 76783 METRO (817)477-8700
8849 ELM STREET FRISCO, TEXAS 75034 METRO (214)387-8000
www.wierassociates.com



PHASE II S.H. 205 BYPASS
FROM S.H. 276 TO INTERSTATE 30
S.H. 205 & I.H. 30 INTERSECTION
ASPHALT TRANSITION PAVING PLAN



COPYRIGHT ©
WIER & ASSOCIATES, INC.
LAST SHEET EDIT
DATE 12-31-2007
WA# 04141
SHEET NO.
P201

FILE:PAVE41-Phase2-04141.dwg
TIME: 15:47