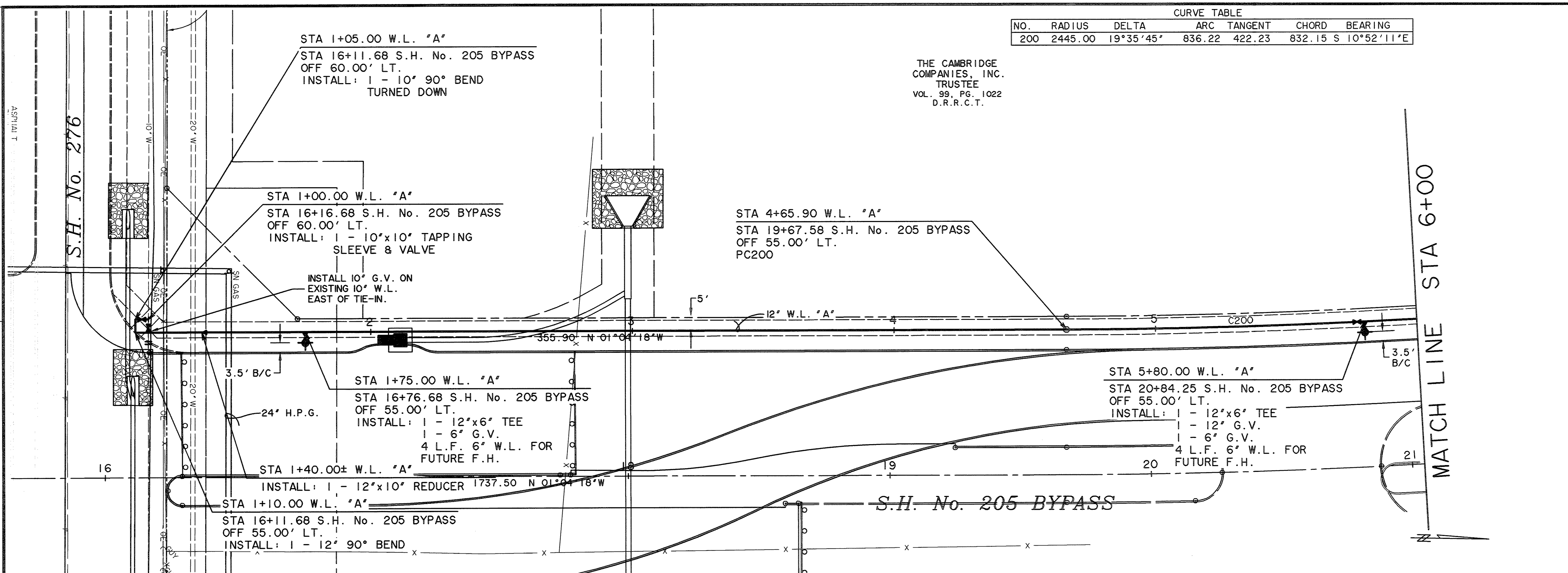


TIME: 7:41 FILE: 04141-WLPP1.dwg

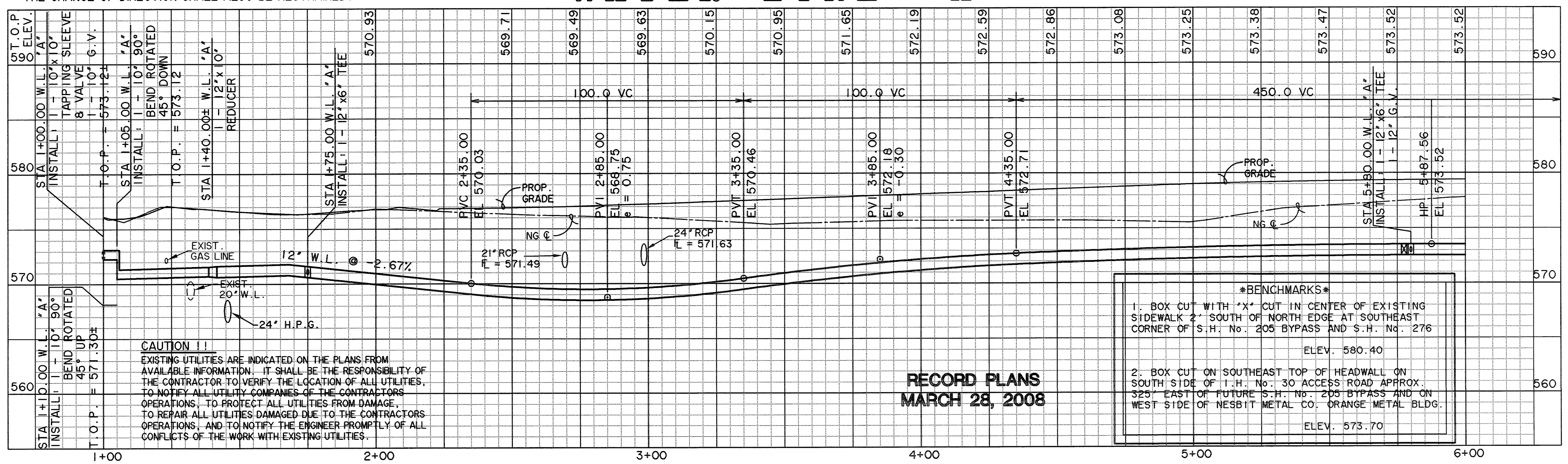
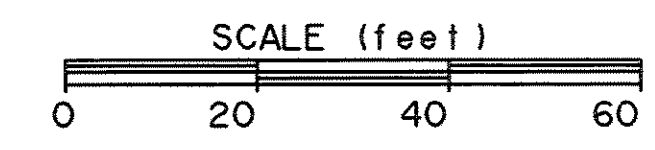


CURVE TABLE

NO.	RADIUS	DELTA	ARC TANGENT	CHORD	BEARING
200	2445.00	19°35'45"	836.22	422.23	832.15 S 10°52'11"E

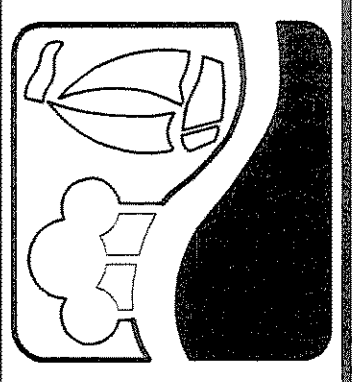
THE CAMBRIDGE COMPANIES, INC. TRUSTEE
VOL. 99, PG. 1022
D.R.R.C.T.

NOTE: ALL PVC WATER LINES SHALL BE C-900 CLASS 200 PIPE. ALL CHANGES IN WATER LINE DIRECTION (BENDS) SHALL BE RESTRAINED (MEGA-LUG OR EQUAL) AND CONCRETE BLOCKED. THE NEXT JOINT EITHER SIDE OF THE CHANGE OF DIRECTION SHALL ALSO BE RESTRAINED.



RECORD PLANS
MARCH 28, 2008

PREPARED BY:
VIA WIER & ASSOCIATES, INC.
ENGINEERS SURVEYORS LAND PLANNERS
4300 BELTWAY PLACE SUITE 130 ARLINGTON, TEXAS 76016 METRO (817)467-7700
1380 U.S. HIGHWAY 287 N. SUITE 101 MANSFIELD, TEXAS 76063 METRO (817)477-6700
6848 ELM STREET FRISCO, TEXAS 75034 METRO (214)387-8000
www.viaassociates.com



PHASE I SH. 205 BYPASS
FROM SH. 276 TO INTERSTATE 30
WATER LINE "A"
PLAN & PROFILE
STA 1+00 TO 6+00

STATE OF TEXAS
PHILIP L. GRAHAM
94719
LICENSED PROFESSIONAL ENGINEER
3/28/08
COPYRIGHT ©
WIER & ASSOCIATES, INC.
LAST SHEET EDIT
DATE 03-28-2008
WA# 04141
SHEET NO.
U101

TIME 9:27 FILE: 04141-WLPP2.dwg

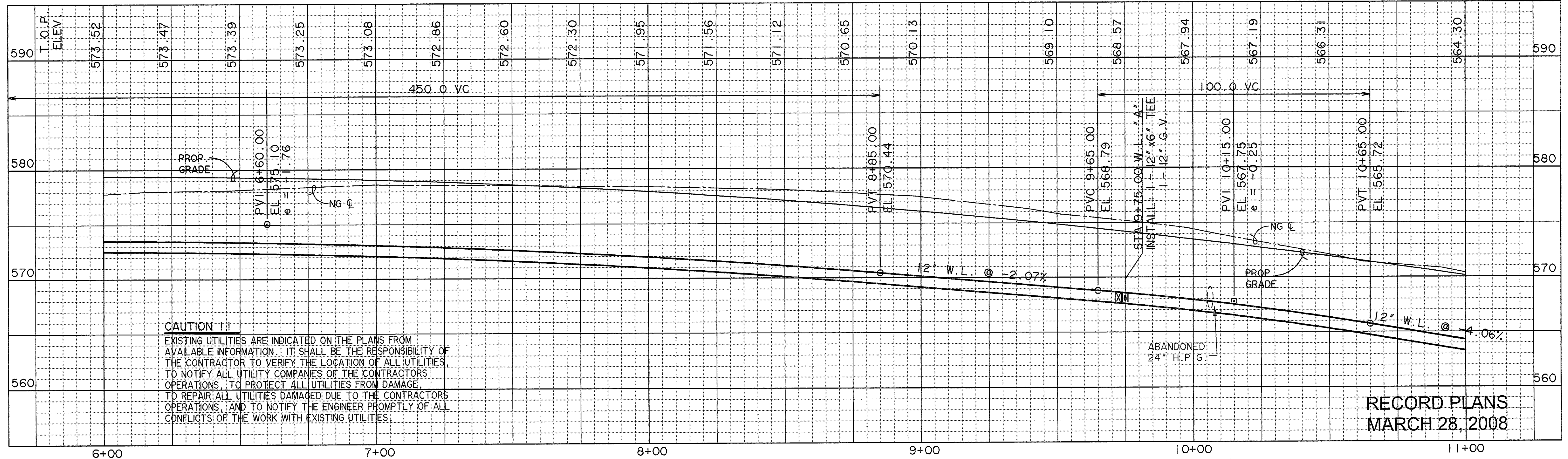
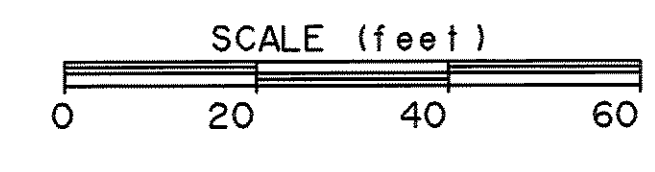
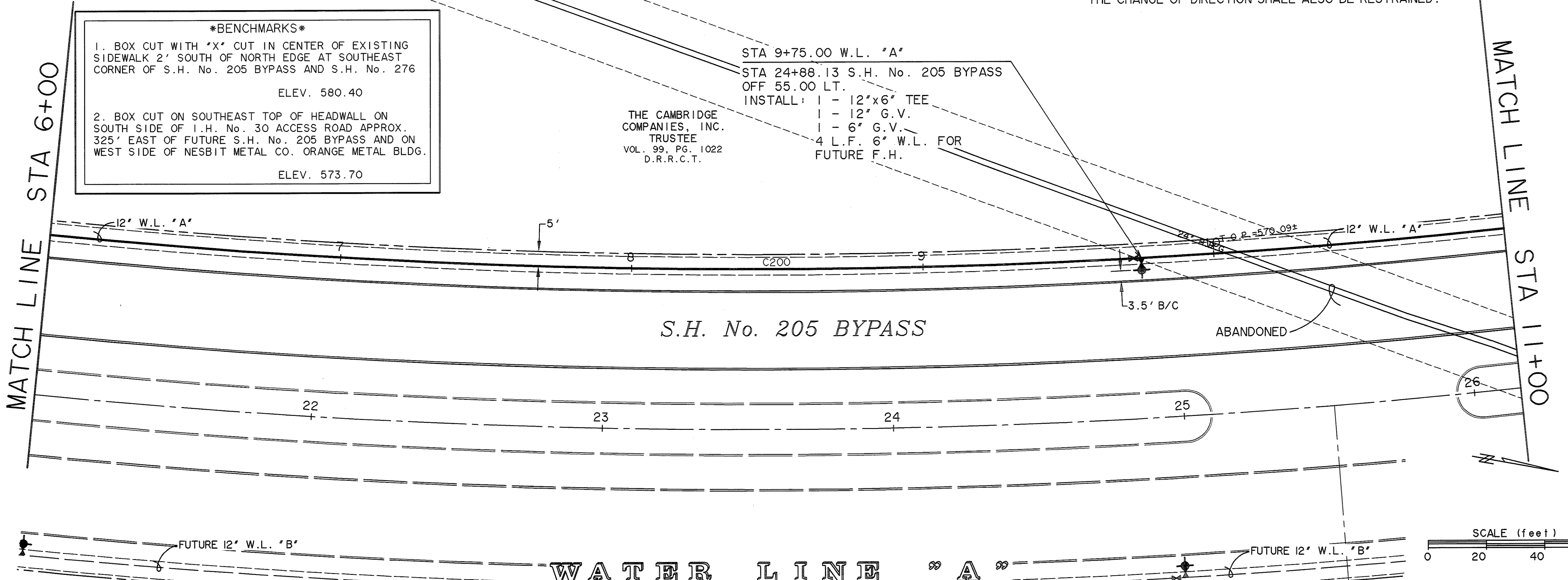
CURVE TABLE						
NO.	RADIUS	DELTA	ARC TANGENT	CHORD	BEARING	
200	2445.00	19°35'45"	836.22	422.23	832.15	S 10°52'11"E

NOTE: ALL PVC WATER LINES SHALL BE C-900 CLASS 200 PIPE. ALL CHANGES IN WATER LINE DIRECTION (BENDS) SHALL BE RESTRAINED (MEGA-LUG OR EQUAL) AND CONCRETE BLOCKED. THE NEXT JOINT EITHER SIDE OF THE CHANGE OF DIRECTION SHALL ALSO BE RESTRAINED.

BENCHMARKS
 1. BOX CUT WITH "X" CUT IN CENTER OF EXISTING SIDEWALK 2' SOUTH OF NORTH EDGE AT SOUTHEAST CORNER OF S.H. No. 205 BYPASS AND S.H. No. 276
 ELEV. 580.40
 2. BOX CUT ON SOUTHEAST TOP OF HEADWALL ON SOUTH SIDE OF I.H. No. 30 ACCESS ROAD APPROX. 325' EAST OF FUTURE S.H. No. 205 BYPASS AND ON WEST SIDE OF NESBIT METAL CO. ORANGE METAL BLDG.
 ELEV. 573.70

THE CAMBRIDGE COMPANIES, INC. TRUSTEE
 VOL. 99, PG. 1022
 D.R.R.C.T.

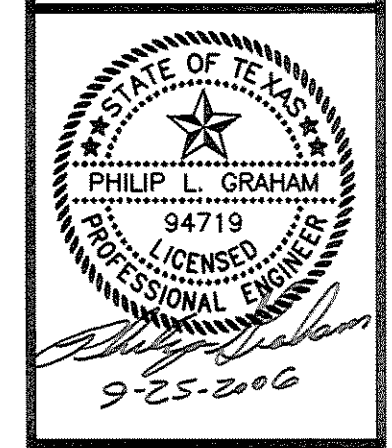
STA 9+75.00 W.L. "A"
 STA 24+88.13 S.H. No. 205 BYPASS OFF 55.00 LT.
 INSTALL: 1 - 12"x6" TEE
 1 - 12" G.V.
 1 - 6" G.V.
 4 L.F. 6" W.L. FOR FUTURE F.H.



PREPARED BY:
WIA WIER & ASSOCIATES, INC.
 ENGINEERS SURVEYORS LAND PLANNERS
 4300 BELTWAY PLACE SUITE 130 ARLINGTON, TEXAS 76018 METRO (817)467-7700
 1380 U.S. HIGHWAY 287 N. SUITE 101 MANSFIELD, TEXAS 76063 METRO (817)477-8700
 6848 ELM STREET FRISCO, TEXAS 75034 METRO (214)397-8000
 www.wiaassociates.com



PHASE I S.H. 205 BYPASS
 FROM S.H. 276 TO INTERSTATE 30
WATER LINE "A"
 PLAN & PROFILE
 STA 6+00 TO 11+00



COPYRIGHT ©
 WIER & ASSOCIATES, INC.
 LAST SHEET EDIT
 DATE 09-15-2006
 WA# 04141
SHEET NO. U102

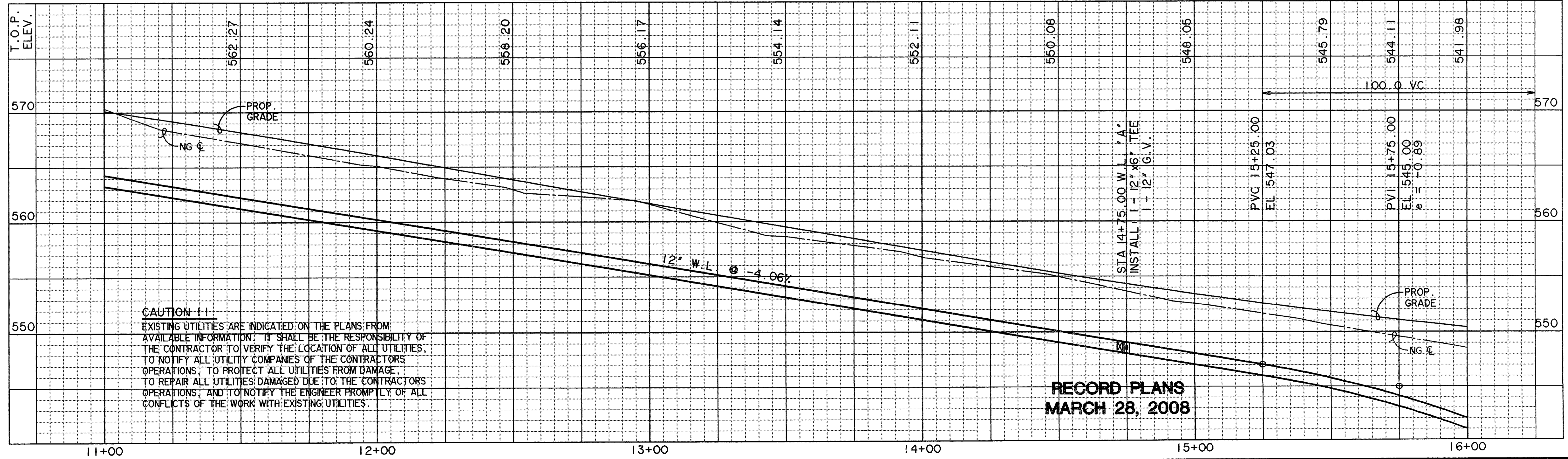
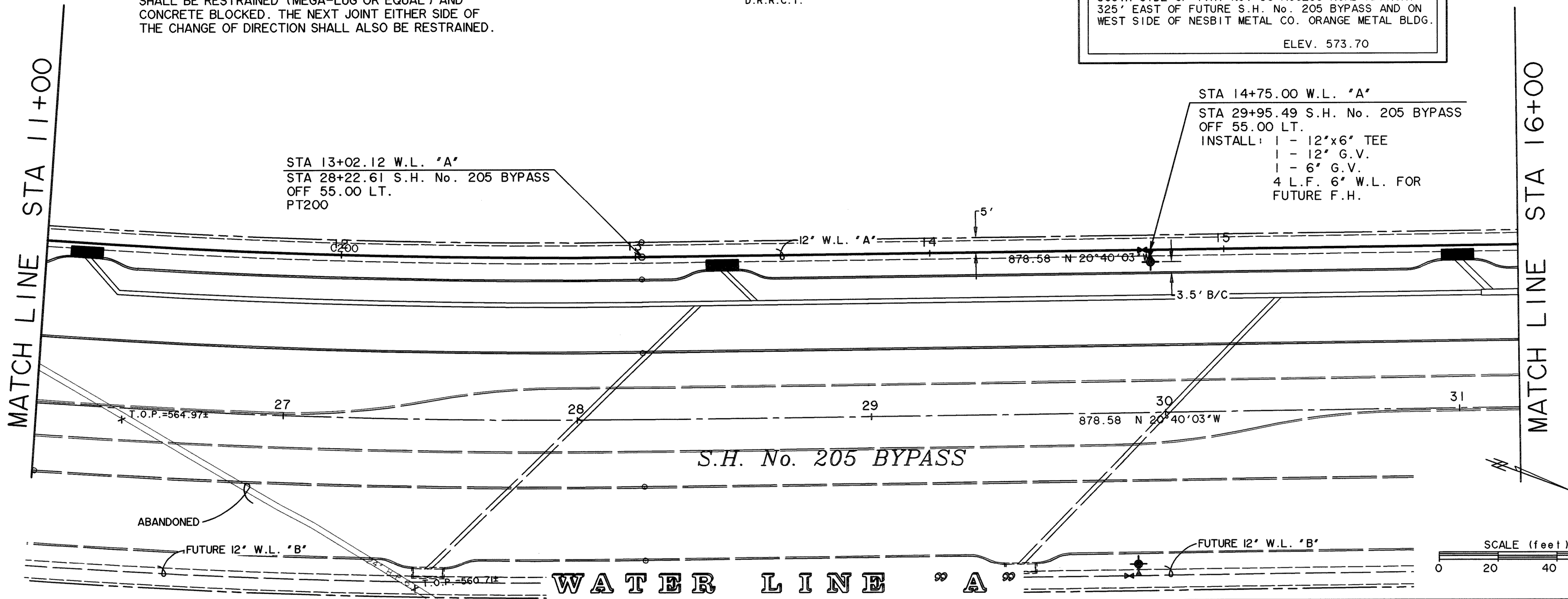
RECORD PLANS
 MARCH 28, 2008

CURVE TABLE					
NO.	RADIUS	DELTA	ARC TANGENT	CHORD	BEARING
200	2445.00	19°35'45"	836.22	422.23	832.15 S 10°52'11"E

NOTE: ALL PVC WATER LINES SHALL BE C-900 CLASS 200 PIPE. ALL CHANGES IN WATER LINE DIRECTION (BENDS) SHALL BE RESTRAINED (MEGA-LUG OR EQUAL) AND CONCRETE BLOCKED. THE NEXT JOINT EITHER SIDE OF THE CHANGE OF DIRECTION SHALL ALSO BE RESTRAINED.

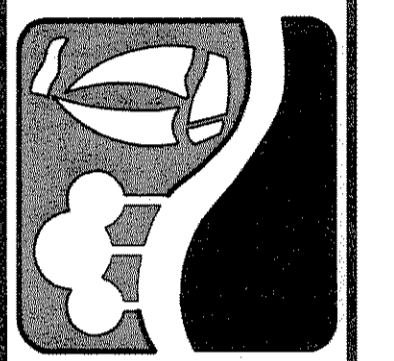
THE CAMBRIDGE COMPANIES, INC.
TRUSTEE
VOL. 99, PG. 1022
D.R.R.C.T.

BENCHMARK
1. BOX CUT WITH "X" CUT IN CENTER OF EXISTING SIDEWALK 2' SOUTH OF NORTH EDGE AT SOUTHEAST CORNER OF S.H. No. 205 BYPASS AND S.H. No. 276
ELEV. 580.40
2. BOX CUT ON SOUTHEAST TOP OF HEADWALL ON SOUTH SIDE OF I.H. No. 30 ACCESS ROAD APPROX. 325' EAST OF FUTURE S.H. No. 205 BYPASS AND ON WEST SIDE OF NESBIT METAL CO. ORANGE METAL BLDG.
ELEV. 573.70

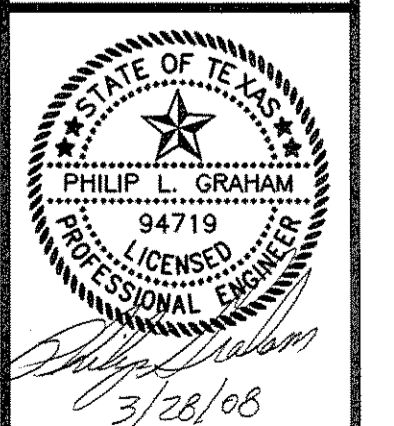


**RECORD PLANS
MARCH 28, 2008**

PREPARED BY:
WIA WIER & ASSOCIATES, INC.
ENGINEERS SURVEYORS LAND PLANNERS
4300 BELTWAY PLACE SUITE 130 ARLINGTON, TEXAS 76018 METRO (817)467-7700
1380 U.S. HIGHWAY 287 N. SUITE 101 WANSFELD, TEXAS 76063 METRO (817)477-8700
6848 ELM STREET FRISCO, TEXAS 75034 METRO (214)387-8800
www.wiaassociates.com



**PHASE I S.H. 205 BYPASS
FROM S.H. 276 TO INTERSTATE 30
WATER LINE "A"
PLAN & PROFILE
STA 11+00 TO 16+00**



COPYRIGHT ©
WIER & ASSOCIATES, INC.
LAST SHEET EDIT
DATE 09-15-2006
WA# 04141
**SHEET NO.
U103**

TIME 9:28 FILE 04141-WLPP3.dwg

BENCHMARKS

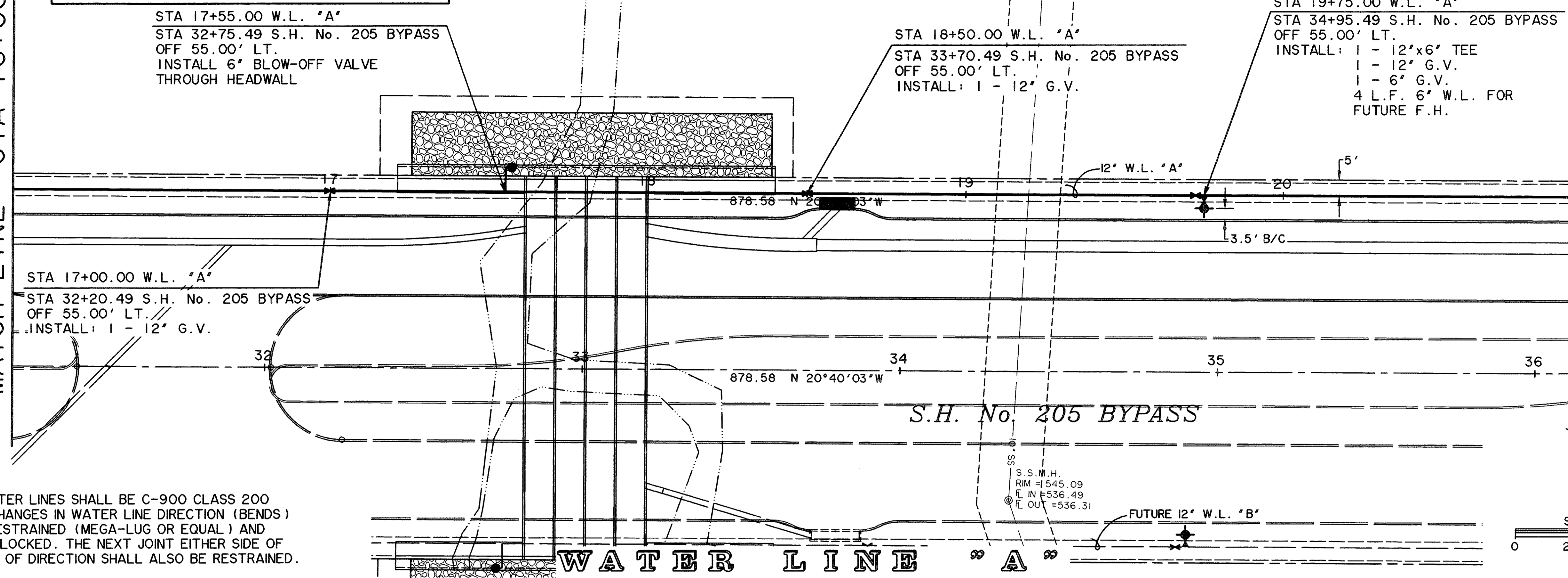
1. BOX CUT WITH "X" CUT IN CENTER OF EXISTING SIDEWALK 2' SOUTH OF NORTH EDGE AT SOUTHEAST CORNER OF S.H. No. 205 BYPASS AND S.H. No. 276
ELEV. 580.40

2. BOX CUT ON SOUTHEAST TOP OF HEADWALL ON SOUTH SIDE OF I.H. No. 30 ACCESS ROAD APPROX. 325' EAST OF FUTURE S.H. No. 205 BYPASS AND ON WEST SIDE OF NESBIT METAL CO. ORANGE METAL BLDG.
ELEV. 573.70

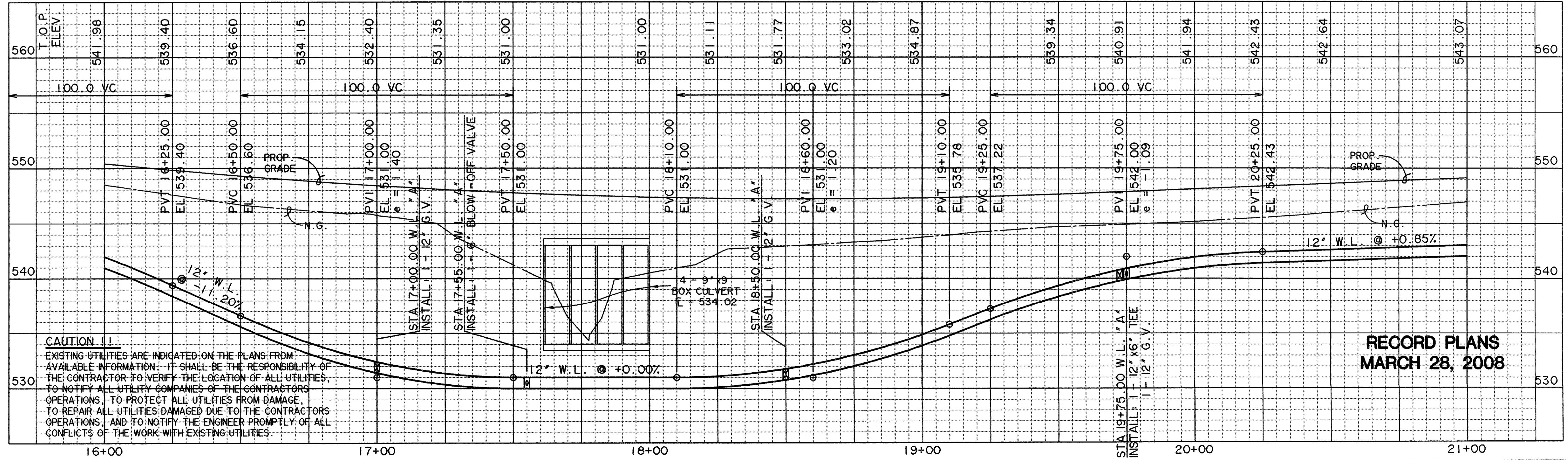
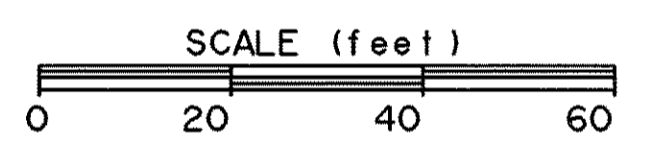
THE CAMBRIDGE COMPANIES, INC.
TRUSTEE
VOL. 99, PG. 1022
D.R.R.C.T.

MATCH LINE STA 16+00

MATCH LINE STA 21+00



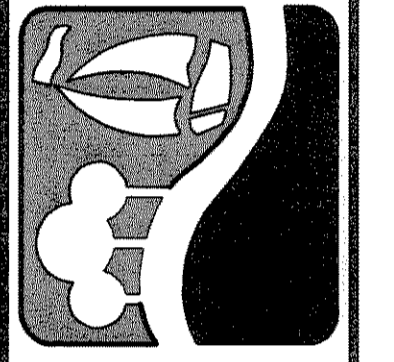
NOTE: ALL PVC WATER LINES SHALL BE C-900 CLASS 200 PIPE. ALL CHANGES IN WATER LINE DIRECTION (BENDS) SHALL BE RESTRAINED (MEGA-LUG OR EQUAL) AND CONCRETE BLOCKED. THE NEXT JOINT EITHER SIDE OF THE CHANGE OF DIRECTION SHALL ALSO BE RESTRAINED.



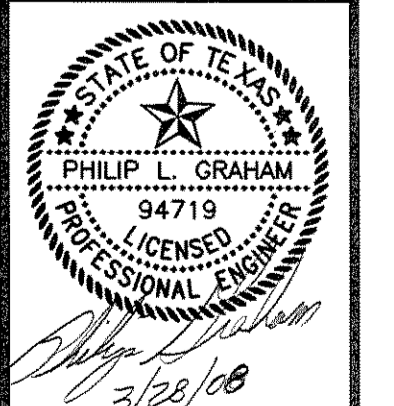
CAUTION !!
EXISTING UTILITIES ARE INDICATED ON THE PLANS FROM AVAILABLE INFORMATION. IT SHALL BE THE RESPONSIBILITY OF THE CONTRACTOR TO VERIFY THE LOCATION OF ALL UTILITIES, TO NOTIFY ALL UTILITY COMPANIES OF THE CONTRACTOR'S OPERATIONS, TO PROTECT ALL UTILITIES FROM DAMAGE, TO REPAIR ALL UTILITIES DAMAGED DUE TO THE CONTRACTOR'S OPERATIONS, AND TO NOTIFY THE ENGINEER PROMPTLY OF ALL CONFLICTS OF THE WORK WITH EXISTING UTILITIES.

RECORD PLANS
MARCH 28, 2008

PREPARED BY:
WIA WIER & ASSOCIATES, INC.
ENGINEERS SURVEYORS LAND PLANNERS
4300 BELWAY PLACE SUITE 130 ARLINGTON, TEXAS 76018 METRO (817)467-7700
1380 U.S. HIGHWAY 287 N. SUITE 101 HANFORD, TEXAS 76063 METRO (817)477-8700
6849 ELM STREET FRISCO, TEXAS 75034 METRO (214)397-8000
www.wierassociates.com



PHASE I S.H. 205 BYPASS
FROM S.H. 276 TO INTERSTATE 30
WATER LINE "A"
PLAN & PROFILE
STA 16+00 TO 21+00



COPYRIGHT ©
WIER & ASSOCIATES, INC.
LAST SHEET EDIT
DATE 09-15-2006
WA# 04141
SHEET NO.
U104

NO.	RADIUS	DELTA	ARC TANGENT	CHORD	BEARING
201	2005.00	20°19'45"	711.39	359.48	707.67 N 10°30'11"W

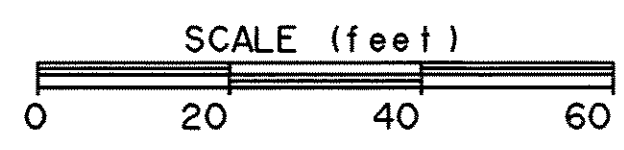
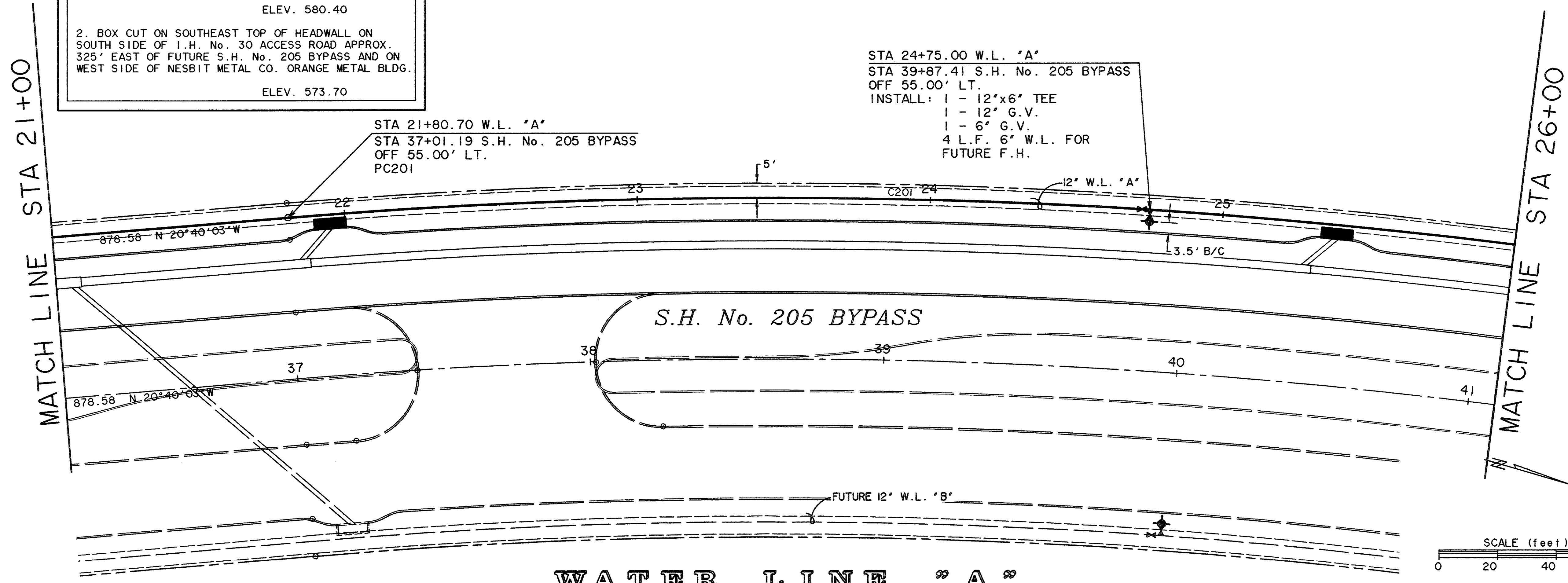
BENCHMARKS

1. BOX CUT WITH "X" CUT IN CENTER OF EXISTING SIDEWALK 2' SOUTH OF NORTH EDGE AT SOUTHEAST CORNER OF S.H. No. 205 BYPASS AND S.H. No. 276
ELEV. 580.40

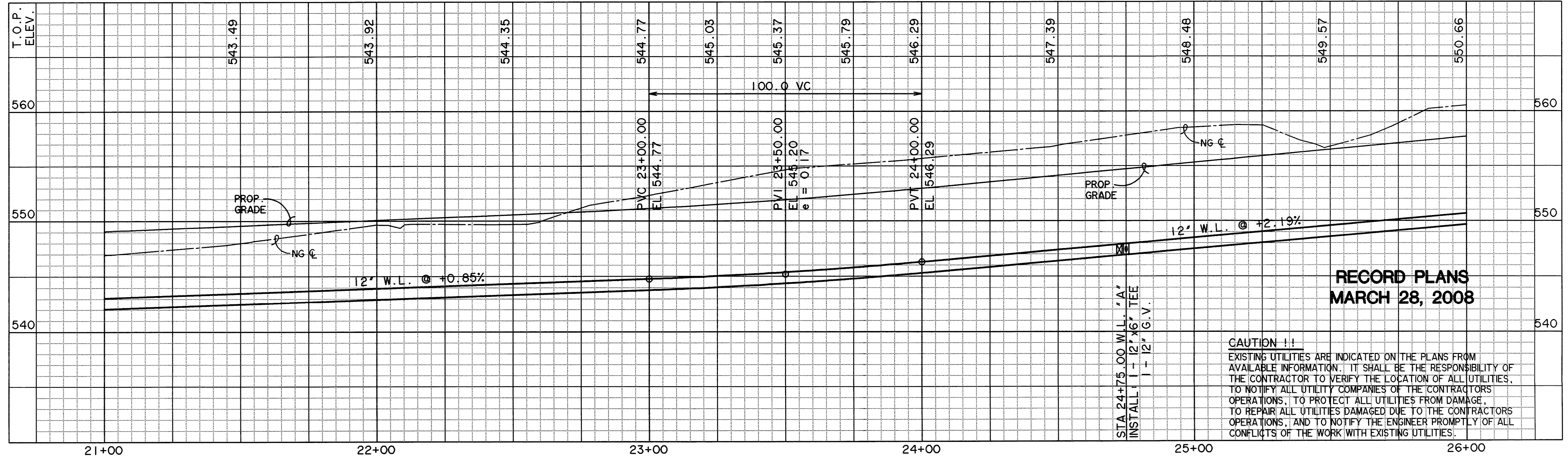
2. BOX CUT ON SOUTHEAST TOP OF HEADWALL ON SOUTH SIDE OF I.H. No. 30 ACCESS ROAD APPROX. 325' EAST OF FUTURE S.H. No. 205 BYPASS AND ON WEST SIDE OF NESBIT METAL CO. ORANGE METAL BLDG.
ELEV. 573.70

THE CAMBRIDGE COMPANIES, INC. TRUSTEE
VOL. 99, PG. 1022
D.R.R.C.T.

NOTE: ALL PVC WATER LINES SHALL BE C-900 CLASS 200 PIPE. ALL CHANGES IN WATER LINE DIRECTION (BENDS) SHALL BE RESTRAINED (MEGA-LUG OR EQUAL) AND CONCRETE BLOCKED. THE NEXT JOINT EITHER SIDE OF THE CHANGE OF DIRECTION SHALL ALSO BE RESTRAINED.



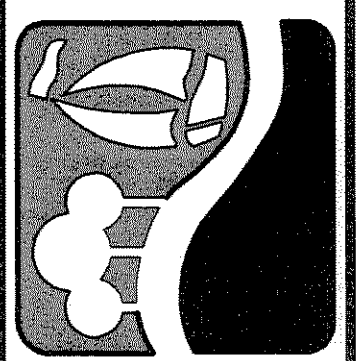
WATER LINE "A"



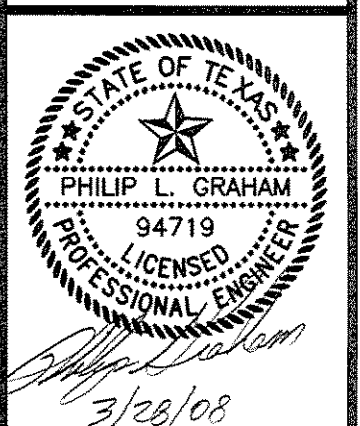
**RECORD PLANS
MARCH 28, 2008**

CAUTION !!!
EXISTING UTILITIES ARE INDICATED ON THE PLANS FROM AVAILABLE INFORMATION. IT SHALL BE THE RESPONSIBILITY OF THE CONTRACTOR TO VERIFY THE LOCATION OF ALL UTILITIES, TO NOTIFY ALL UTILITY COMPANIES OF THE CONTRACTORS OPERATIONS, TO PROTECT ALL UTILITIES FROM DAMAGE, TO REPAIR ALL UTILITIES DAMAGED DUE TO THE CONTRACTORS OPERATIONS, AND TO NOTIFY THE ENGINEER PROMPTLY OF ALL CONFLICTS OF THE WORK WITH EXISTING UTILITIES.

PREPARED BY:
WIA WIER & ASSOCIATES, INC.
ENGINEERS SURVEYORS LAND PLANNERS
4300 BELTWAY PLACE SUITE 130 ARLINGTON, TEXAS 76018 METRO (817)467-7700
1380 U.S. HIGHWAY 287 N. SUITE 101 MANSFIELD, TEXAS 76063 METRO (817)477-8700
6849 ELM STREET FRISCO, TEXAS 75034 METRO (214)387-8000
www.wierassociates.com



PHASE I S.H. 205 BYPASS
FROM S.H. 276 TO INTERSTATE 30
WATER LINE "A"
PLAN & PROFILE
STA 21+00 TO 26+00



COPYRIGHT ©
WIER & ASSOCIATES, INC.
LAST SHEET EDIT
DATE 09-15-2006
WA# 04141
**SHEET NO.
105**

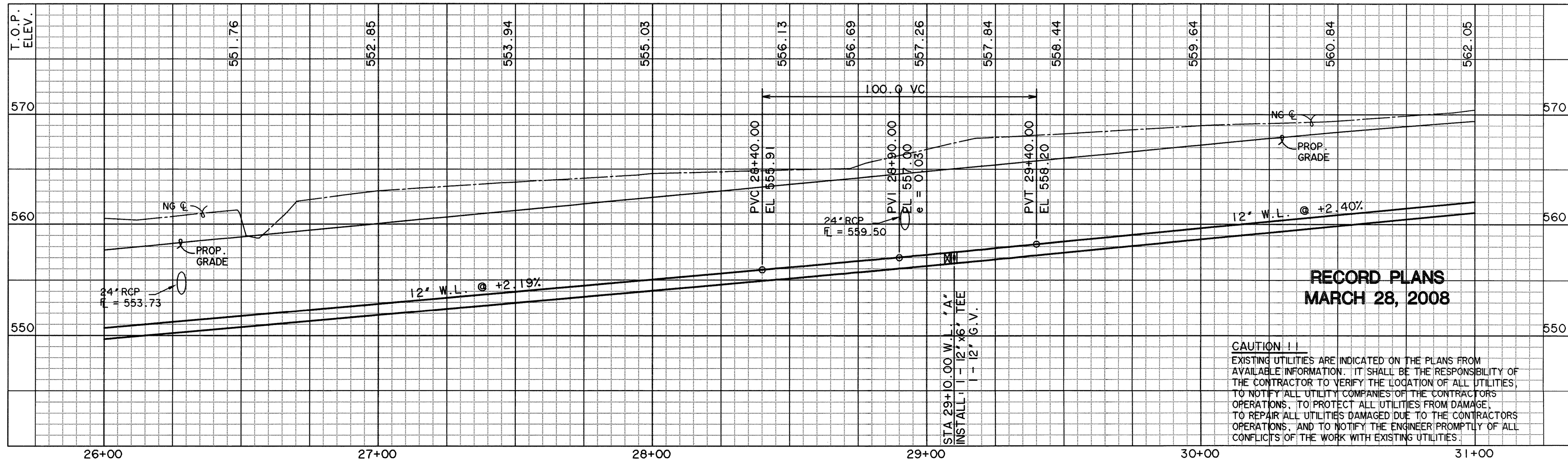
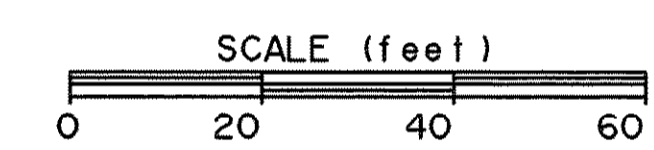
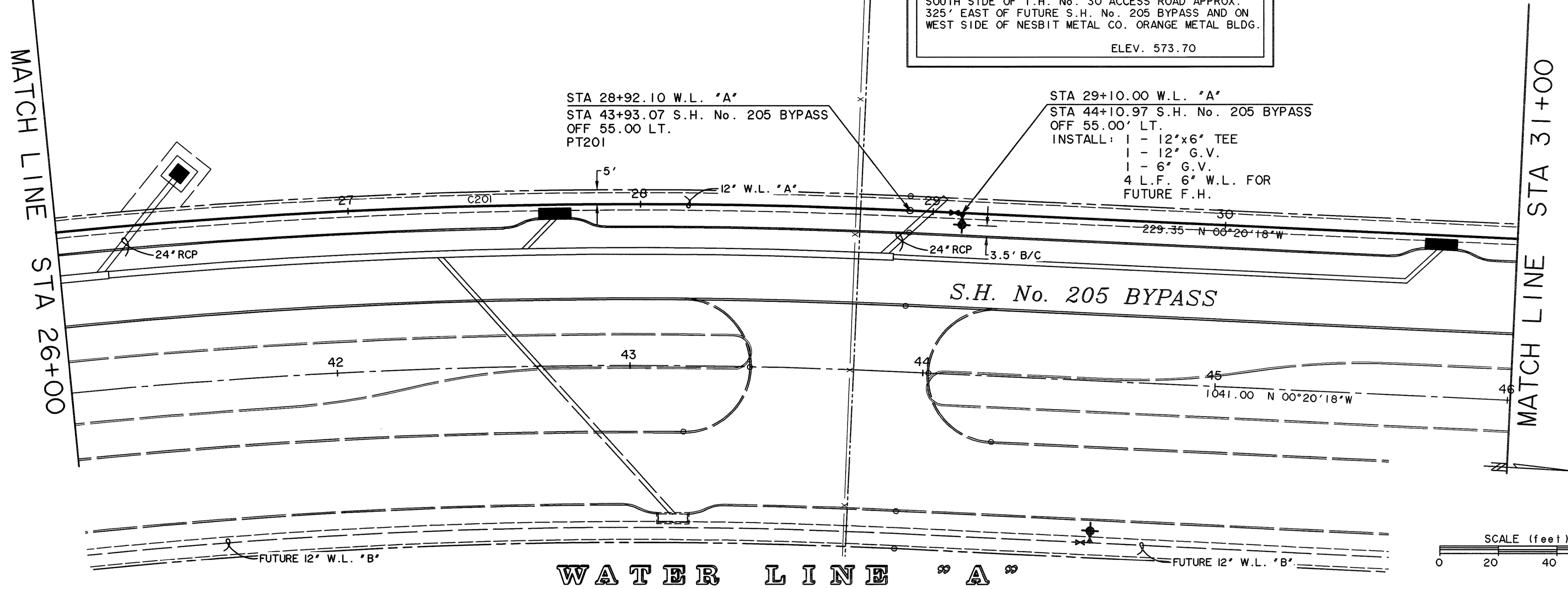
CURVE TABLE						
NO.	RADIUS	DELTA	ARC TANGENT	CHORD	BEARING	
201	2005.00	20°19'45"	711.39	359.48	707.67	N 10°30'11"W

PIPE. ALL CHANGES IN WATER LINE DIRECTION (BENDS) SHALL BE RESTRAINED (MEGA-LUG OR EQUAL) AND CONCRETE BLOCKED. THE NEXT JOINT EITHER SIDE OF THE CHANGE OF DIRECTION SHALL ALSO BE RESTRAINED.

THE CAMBRIDGE COMPANIES, INC. TRUSTEE
VOL. 99, PG. 1022
D.R.R.C.T.

BENCHMARKS
1. BOX CUT WITH 'X' CUT IN CENTER OF EXISTING SIDEWALK 2' SOUTH OF NORTH EDGE AT SOUTHEAST CORNER OF S.H. No. 205 BYPASS AND S.H. No. 276
ELEV. 580.40
2. BOX CUT ON SOUTHEAST TOP OF HEADWALL ON SOUTH SIDE OF I.H. No. 30 ACCESS ROAD APPROX. 325' EAST OF FUTURE S.H. No. 205 BYPASS AND ON WEST SIDE OF NESBIT METAL CO. ORANGE METAL BLDG.
ELEV. 573.70

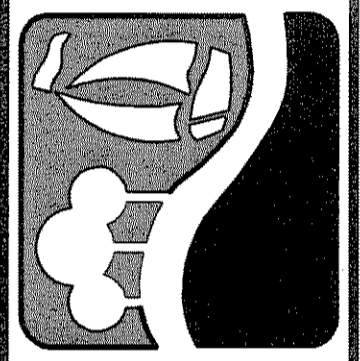
THE CAMBRIDGE COMPANIES, INC. TRUSTEE
VOL. 101, PG. 795
D.R.R.C.T.



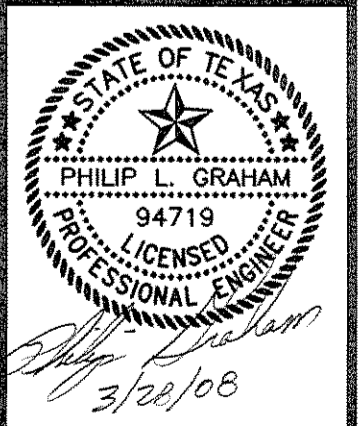
**RECORD PLANS
MARCH 28, 2008**

CAUTION !!
EXISTING UTILITIES ARE INDICATED ON THE PLANS FROM AVAILABLE INFORMATION. IT SHALL BE THE RESPONSIBILITY OF THE CONTRACTOR TO VERIFY THE LOCATION OF ALL UTILITIES, TO NOTIFY ALL UTILITY COMPANIES OF THE CONTRACTORS OPERATIONS, TO PROTECT ALL UTILITIES FROM DAMAGE, TO REPAIR ALL UTILITIES DAMAGED DUE TO THE CONTRACTORS OPERATIONS, AND TO NOTIFY THE ENGINEER PROMPTLY OF ALL CONFLICTS OF THE WORK WITH EXISTING UTILITIES.

PREPARED BY:
WIER & ASSOCIATES, INC.
ENGINEERS SURVEYORS LAND PLANNERS
4300 BELTWAY PLACE SUITE 130 ARLINGTON, TEXAS 76018 METRO (817)467-7700
1380 U.S. HIGHWAY 207 N. SUITE 101 HANFELD, TEXAS 76063 METRO (817)477-8700
8849 ELM STREET FRISCO, TEXAS 75034 METRO (214)387-8000
www.wierassociates.com



PHASE I S.H. 205 BYPASS
FROM S.H. 276 TO INTERSTATE 30
WATER LINE "A"
PLAN & PROFILE
STA 26+00 TO 31+00



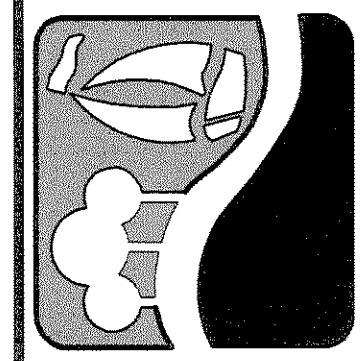
COPYRIGHT ©
WIER & ASSOCIATES, INC.
LAST SHEET EDIT
DATE 11-30-2006
WA# 04141
**SHEET NO.
106**

CURVE TABLE						
NO.	RADIUS	DELTA	ARC TANGENT	CHORD	BEARING	
202	911.50	04°27'06"	70.82	35.43	70.80 S 02°33'51"E	
203	911.50	04°27'06"	70.82	35.43	70.80 N 02°33'51"W	

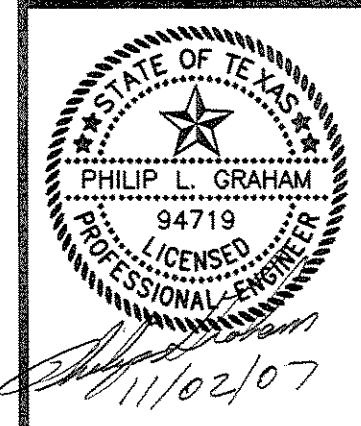
NOTE: ALL PVC WATER LINES SHALL BE C-900 CLASS 200 PIPE. ALL CHANGES IN WATER LINE DIRECTION (BENDS) SHALL BE RESTRAINED (MEGA-LUG OR EQUAL) AND CONCRETE BLOCKED. THE NEXT JOINT EITHER SIDE OF THE CHANGE OF DIRECTION SHALL ALSO BE RESTRAINED.

NO.	DATE	DESCRIPTION	BY
	11/02/07	REVISE W.L. ALIGNMENT & PROFILE	PLG

PREPARED BY:
VIA WIER & ASSOCIATES, INC.
 ENGINEERS SURVEYORS LAND PLANNERS
 4300 BELTWAY PLACE, SUITE 130 ARLINGTON, TEXAS 76018 METRO (817)467-7700
 1380 U.S. HIGHWAY 287 N, SUITE 101 WANSFORD, TEXAS 76063 METRO (817)477-6700
 6849 ELM STREET FRISCO, TEXAS 75034 METRO (214)387-8000
 www.WierAssociates.com

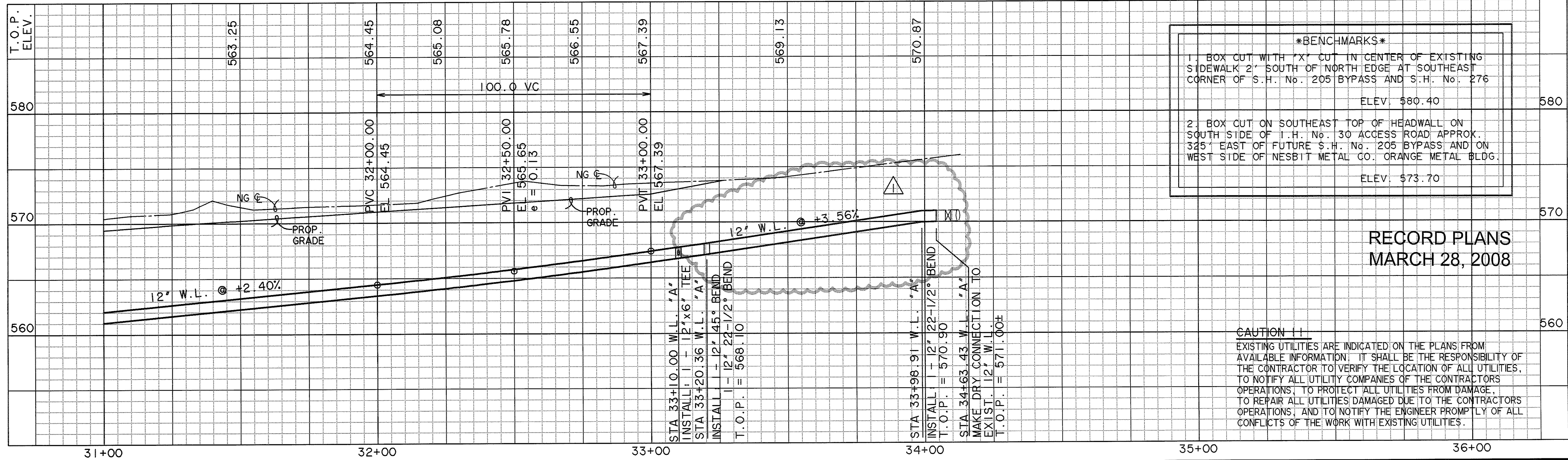
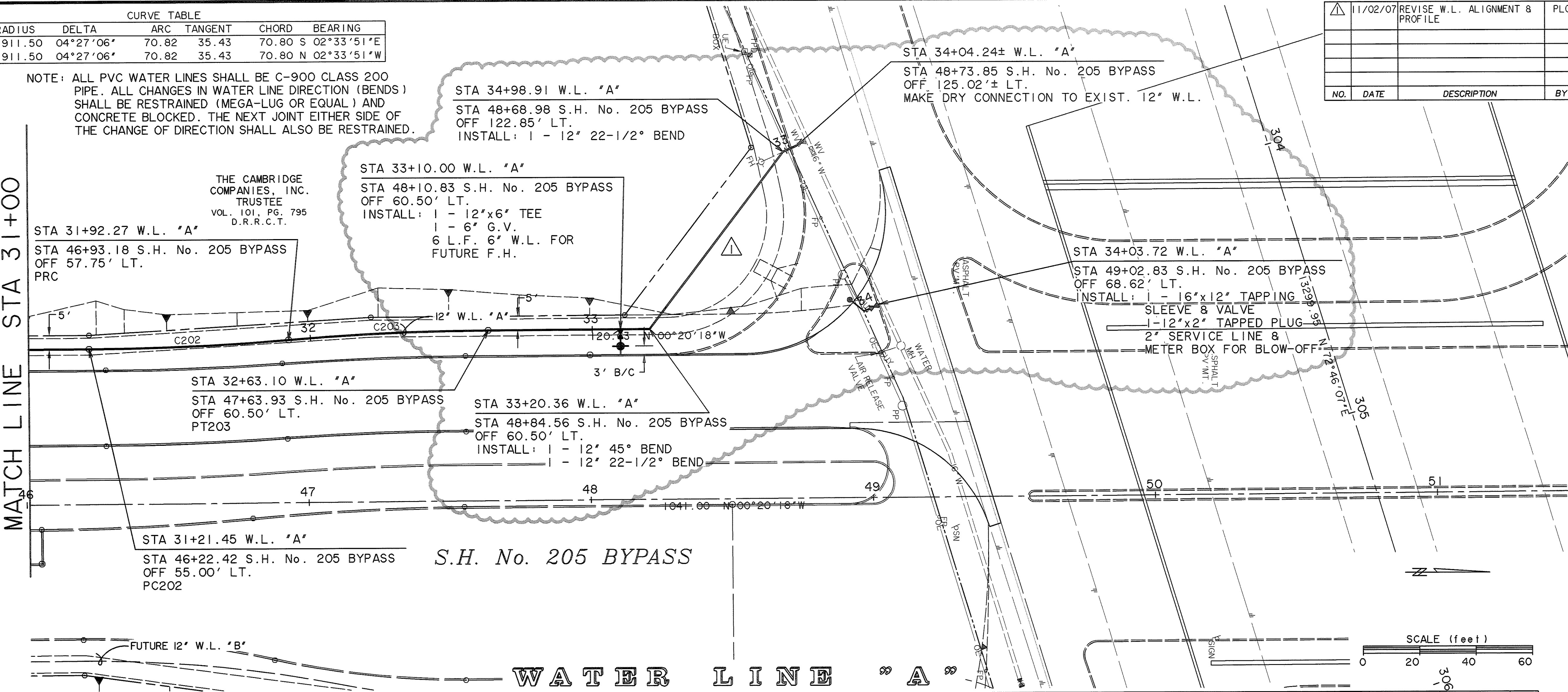


PHASE I S.H. 205 BYPASS
 FROM S.H. 276 TO INTERSTATE 30
 WATER LINE "A"
 PLAN & PROFILE
 STA 31+00 TO END



COPYRIGHT ©
 WIER & ASSOCIATES, INC.
 LAST SHEET EDIT
 DATE 11-02-2007
 WA# 04141
 SHEET NO.
 U107

MATCH LINE STA 31+00



CAUTION !!
 EXISTING UTILITIES ARE INDICATED ON THE PLANS FROM AVAILABLE INFORMATION. IT SHALL BE THE RESPONSIBILITY OF THE CONTRACTOR TO VERIFY THE LOCATION OF ALL UTILITIES, TO NOTIFY ALL UTILITY COMPANIES OF THE CONTRACTORS OPERATIONS, TO PROTECT ALL UTILITIES FROM DAMAGE, TO REPAIR ALL UTILITIES DAMAGED DUE TO THE CONTRACTORS OPERATIONS, AND TO NOTIFY THE ENGINEER PROMPTLY OF ALL CONFLICTS OF THE WORK WITH EXISTING UTILITIES.

TIME: 14.42 FILE: 04141-WLPP7.dwg