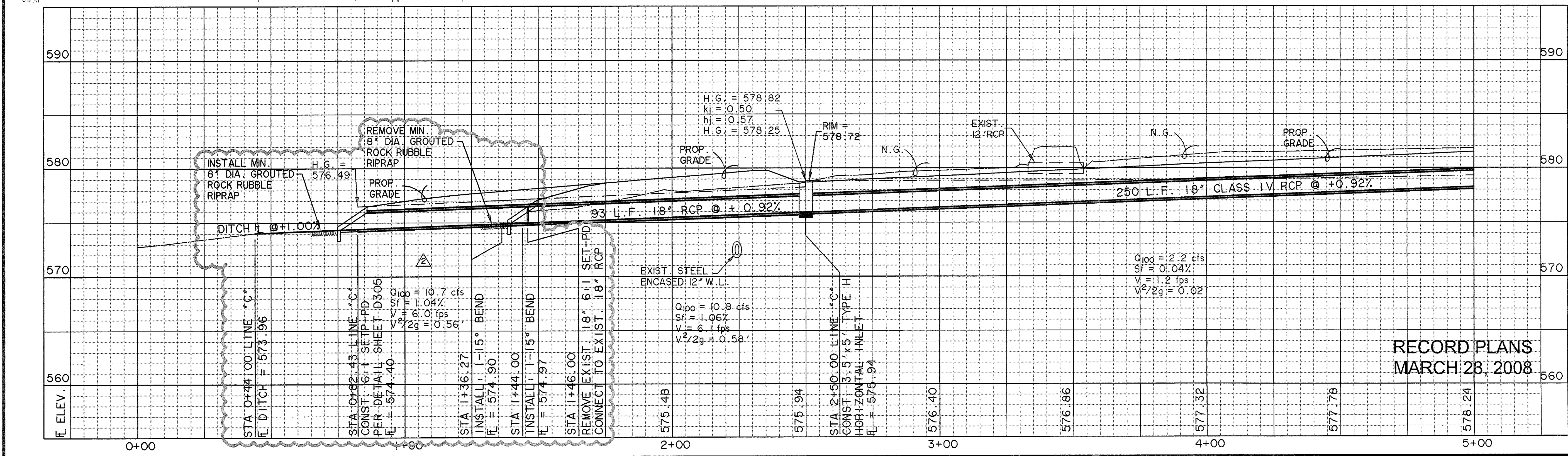
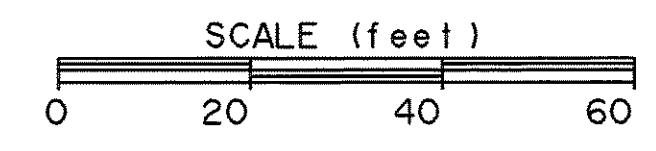
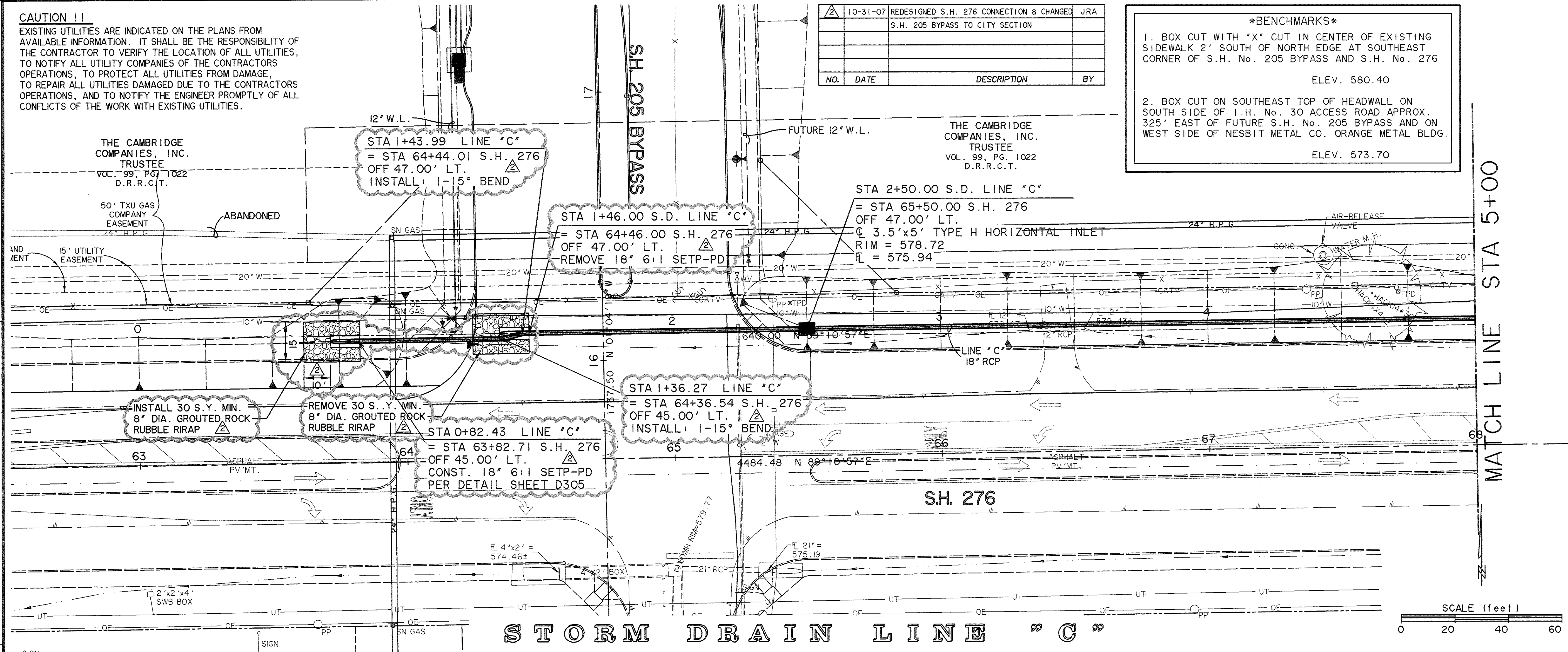


CAUTION !!
 EXISTING UTILITIES ARE INDICATED ON THE PLANS FROM AVAILABLE INFORMATION. IT SHALL BE THE RESPONSIBILITY OF THE CONTRACTOR TO VERIFY THE LOCATION OF ALL UTILITIES, TO NOTIFY ALL UTILITY COMPANIES OF THE CONTRACTORS OPERATIONS, TO PROTECT ALL UTILITIES FROM DAMAGE, TO REPAIR ALL UTILITIES DAMAGED DUE TO THE CONTRACTORS OPERATIONS, AND TO NOTIFY THE ENGINEER PROMPTLY OF ALL CONFLICTS OF THE WORK WITH EXISTING UTILITIES.

NO.	DATE	DESCRIPTION	BY
10-31-07		REDESIGNED S.H. 276 CONNECTION & CHANGED S.H. 205 BYPASS TO CITY SECTION	JRA

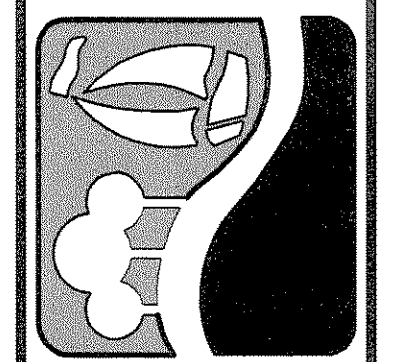
BENCHMARK

- BOX CUT WITH 'X' CUT IN CENTER OF EXISTING SIDEWALK 2' SOUTH OF NORTH EDGE AT SOUTHEAST CORNER OF S.H. No. 205 BYPASS AND S.H. No. 276
ELEV. 580.40
- BOX CUT ON SOUTHEAST TOP OF HEADWALL ON SOUTH SIDE OF I.H. No. 30 ACCESS ROAD APPROX. 325' EAST OF FUTURE S.H. No. 205 BYPASS AND ON WEST SIDE OF NESBIT METAL CO. ORANGE METAL BLDG.
ELEV. 573.70

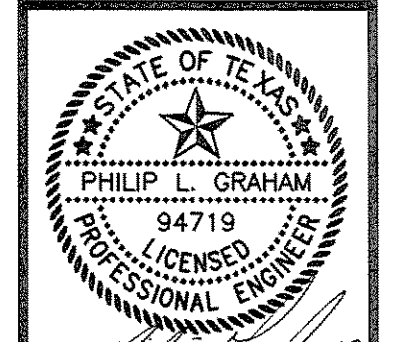


RECORD PLANS
 MARCH 28, 2008

PREPARED BY:
WIER & ASSOCIATES, INC.
 ENGINEERS SURVEYORS LAND PLANNERS
 4300 BELWAY PLACE SUITE 130 ARLINGTON, TEXAS 76010 METRO (817)467-7700
 1380 U.S. HIGHWAY 287 N. SUITE 101 MANSFIELD, TEXAS 76063 METRO (817)477-6700
 6648 ELM STREET FRODO, TEXAS 75034 METRO (214)397-8000
 www.wierassociates.com



PHASE I SH. 205 BYPASS
 FROM SH. 276 TO INTERSTATE 30
STORM DRAIN LINE "C"
 PLAN & PROFILE
 STA 0+00 TO 5+00



COPYRIGHT ©
 WIER & ASSOCIATES, INC.
 LAST SHEET EDIT
 DATE 11-30-2007
 WA# 04141
 SHEET NO.
 D111

TIME 15:16 FILE I:04141-SDPP8.dwg