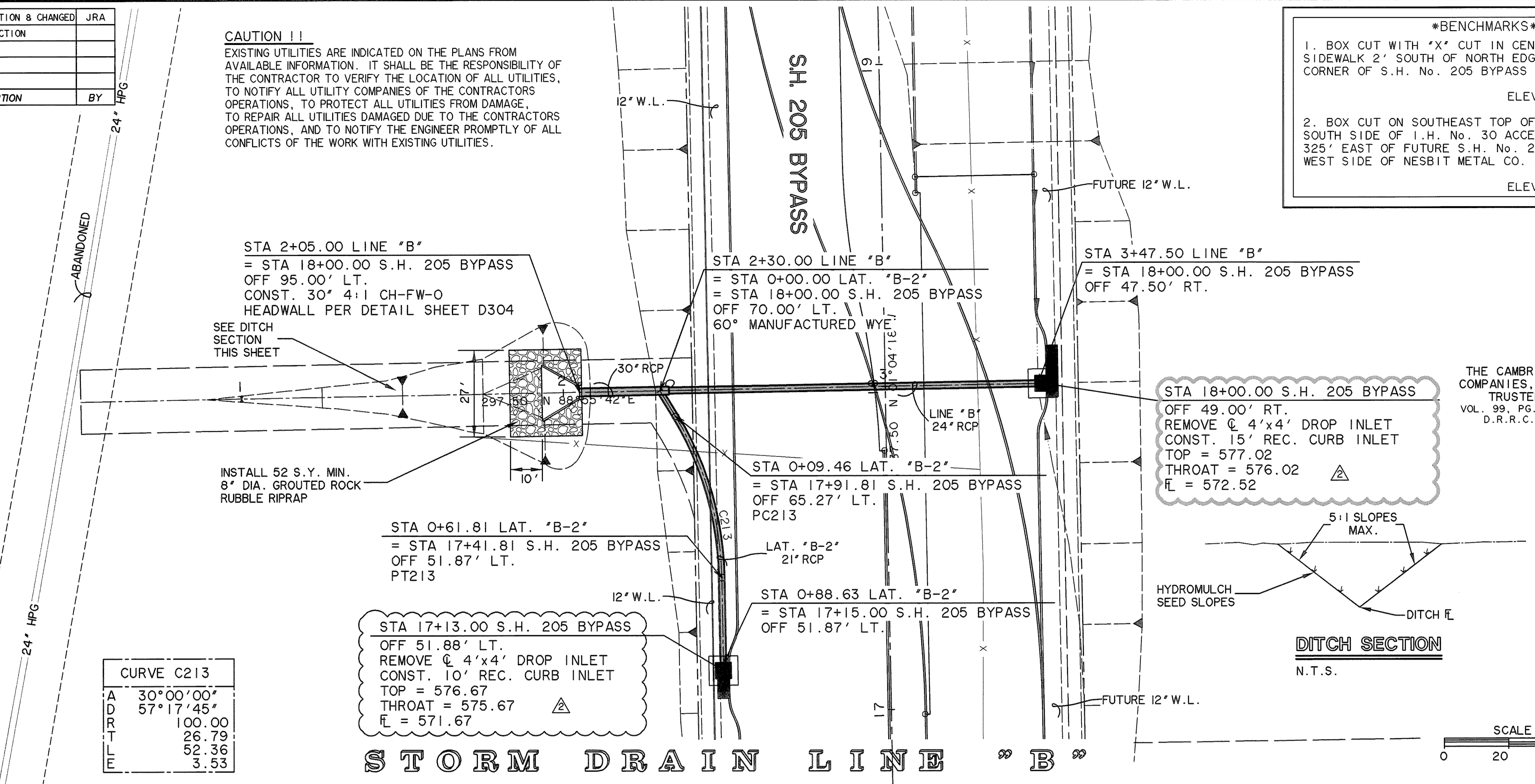


10-31-07	REDESIGNED S.H. 276 CONNECTION & CHANGED S.H. 205 BYPASS TO CITY SECTION	JRA	
NO.	DATE	DESCRIPTION	BY

CAUTION !!
 EXISTING UTILITIES ARE INDICATED ON THE PLANS FROM AVAILABLE INFORMATION. IT SHALL BE THE RESPONSIBILITY OF THE CONTRACTOR TO VERIFY THE LOCATION OF ALL UTILITIES, TO NOTIFY ALL UTILITY COMPANIES OF THE CONTRACTORS OPERATIONS, TO PROTECT ALL UTILITIES FROM DAMAGE, TO REPAIR ALL UTILITIES DAMAGED DUE TO THE CONTRACTORS OPERATIONS, AND TO NOTIFY THE ENGINEER PROMPTLY OF ALL CONFLICTS OF THE WORK WITH EXISTING UTILITIES.

BENCHMARK
 1. BOX CUT WITH "X" CUT IN CENTER OF EXISTING SIDEWALK 2' SOUTH OF NORTH EDGE AT SOUTHEAST CORNER OF S.H. No. 205 BYPASS AND S.H. No. 276
 ELEV. 580.40
 2. BOX CUT ON SOUTHEAST TOP OF HEADWALL ON SOUTH SIDE OF I.H. No. 30 ACCESS ROAD APPROX. 325' EAST OF FUTURE S.H. No. 205 BYPASS AND ON WEST SIDE OF NESBIT METAL CO. ORANGE METAL BLDG.
 ELEV. 573.70

THE CAMBRIDGE COMPANIES, INC. TRUSTEE
 VOL. 99, PG. 1022
 D.R.R.C.T.



CURVE C213

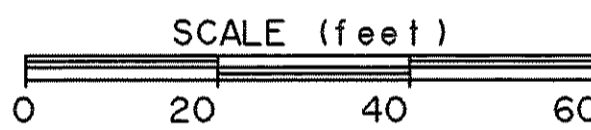
A	30°00'00"
D	57°17'45"
R	100.00
L	26.79
E	52.36
T	3.53

STA 17+13.00 S.H. 205 BYPASS
 OFF 51.88' LT.
 REMOVE 4'x4' DROP INLET
 CONST. 10' REC. CURB INLET
 TOP = 576.67
 THROAT = 575.67
 FL = 571.67

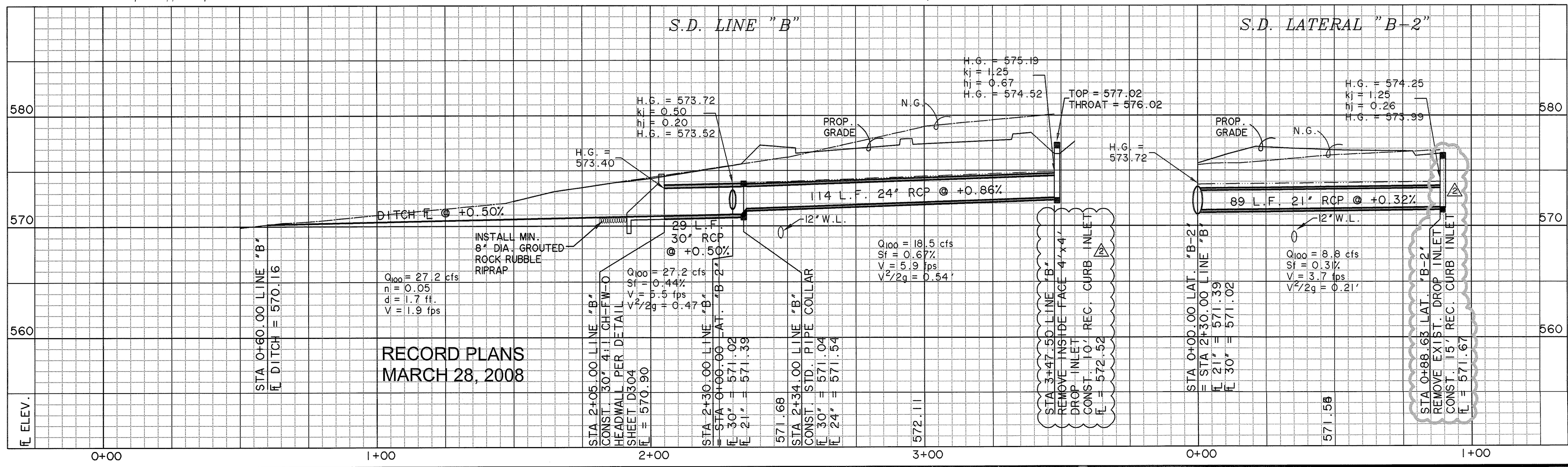
STA 18+00.00 S.H. 205 BYPASS
 OFF 49.00' RT.
 REMOVE 4'x4' DROP INLET
 CONST. 15' REC. CURB INLET
 TOP = 577.02
 THROAT = 576.02
 FL = 572.52

THE CAMBRIDGE COMPANIES, INC. TRUSTEE
 VOL. 99, PG. 1022
 D.R.R.C.T.

DITCH SECTION
 N.T.S.

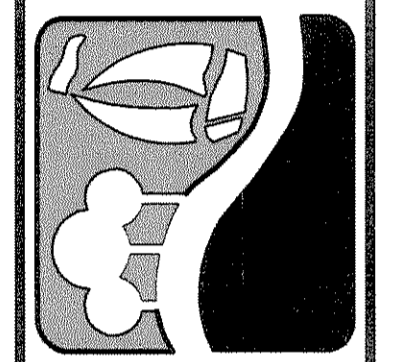


STORM DRAIN LINE "B"

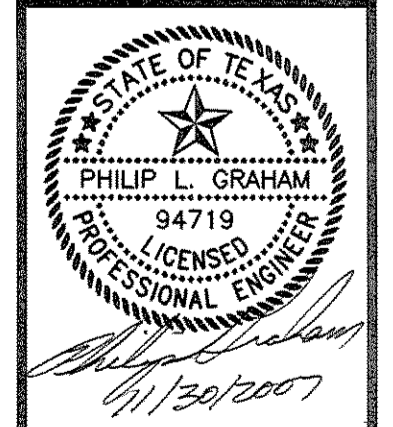


RECORD PLANS
 MARCH 28, 2008

PREPARED BY:
WIER & ASSOCIATES, INC.
 ENGINEERS SURVEYORS LAND PLANNERS
 4300 BELWAY PLACE SUITE 130 ARLINGTON, TEXAS 76010 METRO (817)467-7700
 1380 U.S. HIGHWAY 287 N. SUITE 101 MANSFIELD, TEXAS 76063 METRO (817)717-5700
 6848 ELM STREET FRSO, TEXAS 75034 METRO (214)397-8000
 www.wierassociates.com



PHASE I S.H. 205 BYPASS
 FROM S.H. 276 TO INTERSTATE 30
STORM DRAIN LINE "B"
 PLAN & PROFILE
 STA 0+00 TO END



COPYRIGHT ©
 WIER & ASSOCIATES, INC.
 LAST SHEET EDIT
 DATE: 11-30-2007
 WA# 04141
SHEET NO. D110