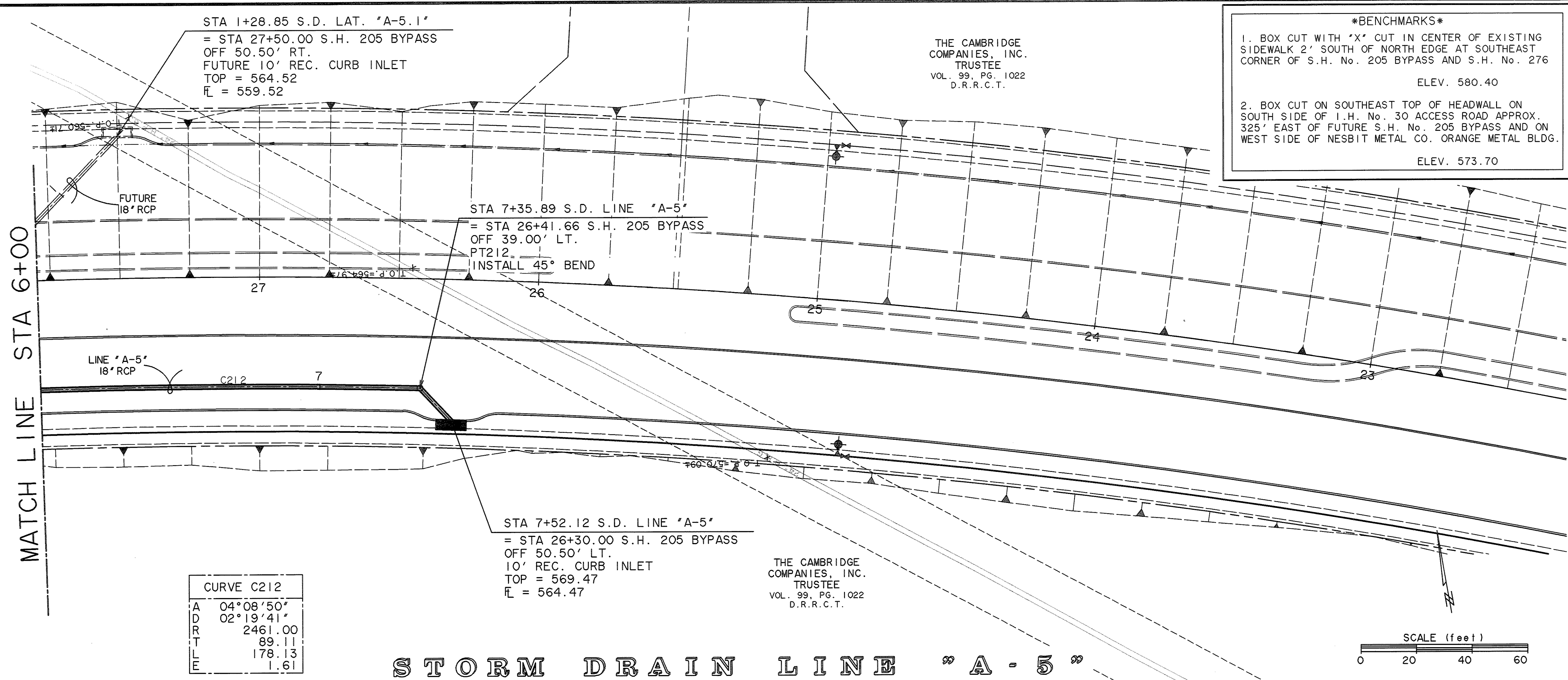


TIME 0.35 FILE: 04141-SDPPG.dwg



CURVE C212	
A	04°08'50"
D	02°19'41"
R	2461.00
T	89.11
E	178.13
L	1.61

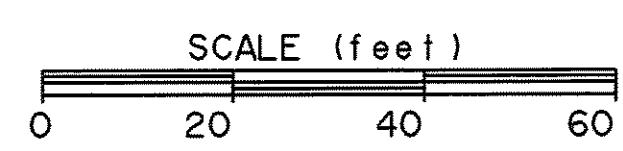
BENCHMARK

1. BOX CUT WITH "X" CUT IN CENTER OF EXISTING SIDEWALK 2' SOUTH OF NORTH EDGE AT SOUTHEAST CORNER OF S.H. No. 205 BYPASS AND S.H. No. 276
ELEV. 580.40

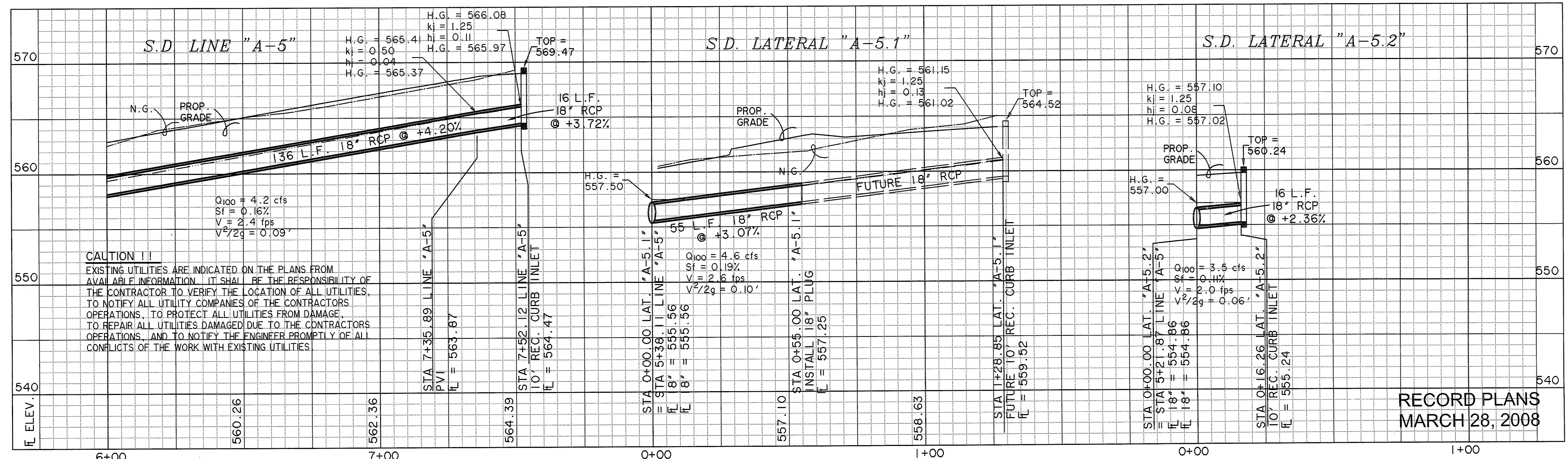
2. BOX CUT ON SOUTHEAST TOP OF HEADWALL ON SOUTH SIDE OF I.H. No. 30 ACCESS ROAD APPROX. 325' EAST OF FUTURE S.H. No. 205 BYPASS AND ON WEST SIDE OF NESBIT METAL CO. ORANGE METAL BLDG.
ELEV. 573.70

THE CAMBRIDGE COMPANIES, INC.
TRUSTEE
VOL. 99, PG. 1022
D.R.R.C.T.

THE CAMBRIDGE COMPANIES, INC.
TRUSTEE
VOL. 99, PG. 1022
D.R.R.C.T.

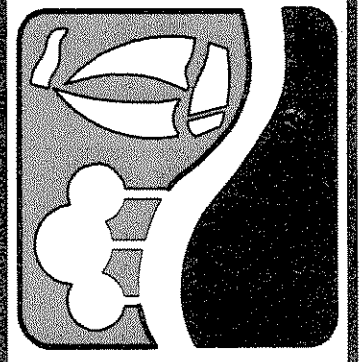


STORM DRAIN LINE "A-5"

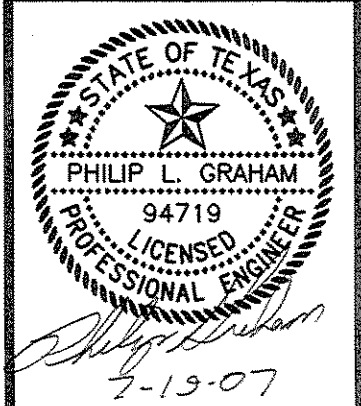


CAUTION !!
EXISTING UTILITIES ARE INDICATED ON THE PLANS FROM AVAILABLE INFORMATION. IT SHALL BE THE RESPONSIBILITY OF THE CONTRACTOR TO VERIFY THE LOCATION OF ALL UTILITIES, TO NOTIFY ALL UTILITY COMPANIES OF THE CONTRACTORS OPERATIONS, TO PROTECT ALL UTILITIES FROM DAMAGE, TO REPAIR ALL UTILITIES DAMAGED DUE TO THE CONTRACTORS OPERATIONS, AND TO NOTIFY THE ENGINEER PROMPTLY OF ALL CONFLICTS OF THE WORK WITH EXISTING UTILITIES.

PREPARED BY:
VIA WIER & ASSOCIATES, INC.
ENGINEERS SURVEYORS LAND PLANNERS
4300 BELTWAY PLACE SUITE 130 ARLINGTON, TEXAS 76018 METRO (817)467-7700
1390 U.S. HIGHWAY 287 N. SUITE 101 MANSFIELD, TEXAS 76063 METRO (817)477-8700
6849 ELM STREET PRISCO, TEXAS 75034 METRO (214)387-8000
www.via-wier.com



PHASE I S.H. 205 BYPASS
FROM S.H. 276 TO INTERSTATE 30
STORM DRAIN LINE "A-5"
PLAN & PROFILE
STA 6+00 TO END



RECORD PLANS
MARCH 28, 2008

COPYRIGHT ©
WIER & ASSOCIATES, INC.
LAST SHEET EDIT
DATE 07-19-2007
WA# 04141
SHEET NO.
D109