

| | | | |
|----------|---|-------------|----|
| 10-31-07 | CHANGED S.H. 205 BYPASS TO CITY SECTION | JRA | |
| NO. | DATE | DESCRIPTION | BY |

STA 33+80.00 S.H. 205 BYPASS
OFF 50.50' LT.
CONST. 15' REC. CURB INLET
TOP = 547.00
R = 542.00

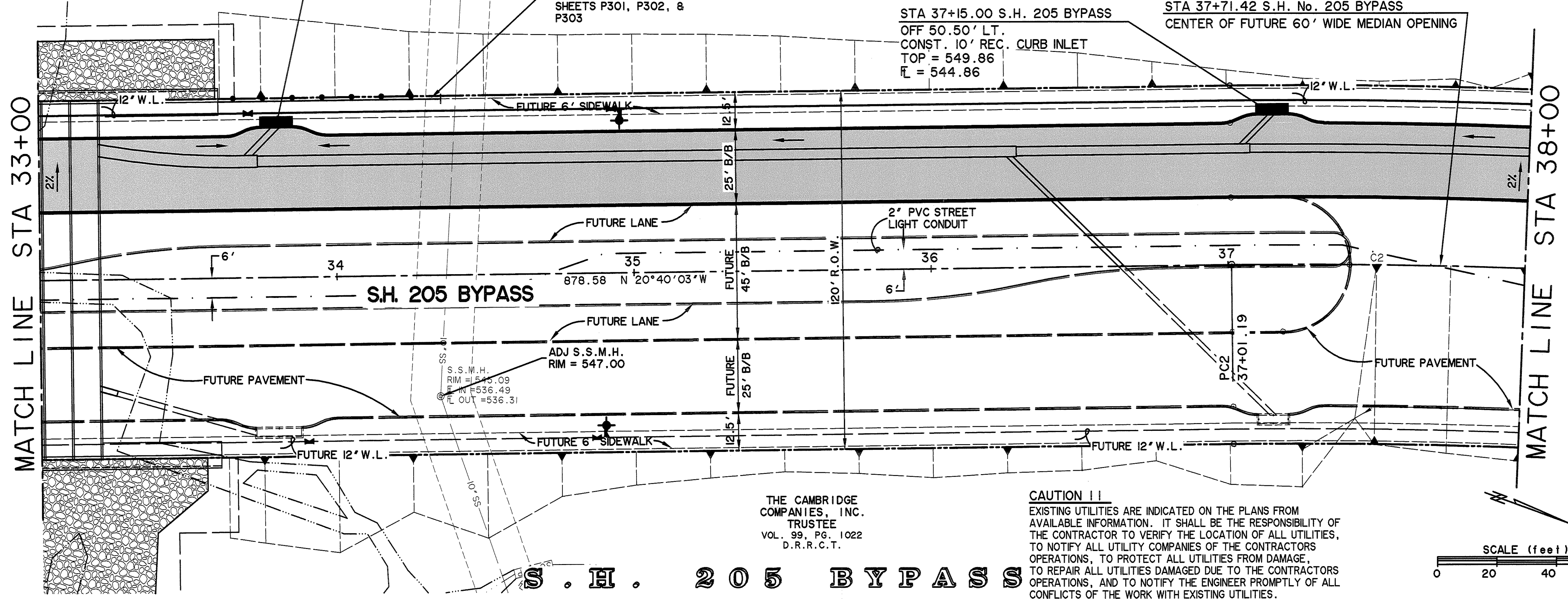
THE CAMBRIDGE COMPANIES, INC.
TRUSTEE
VOL. 99 PG. 1022
D.R.R.C.T.

BENCHMARK

1. BOX CUT WITH 'X' CUT IN CENTER OF EXISTING SIDEWALK 2' SOUTH OF NORTH EDGE AT SOUTHEAST CORNER OF S.H. No. 205 BYPASS AND S.H. No. 276
ELEV. 580.40

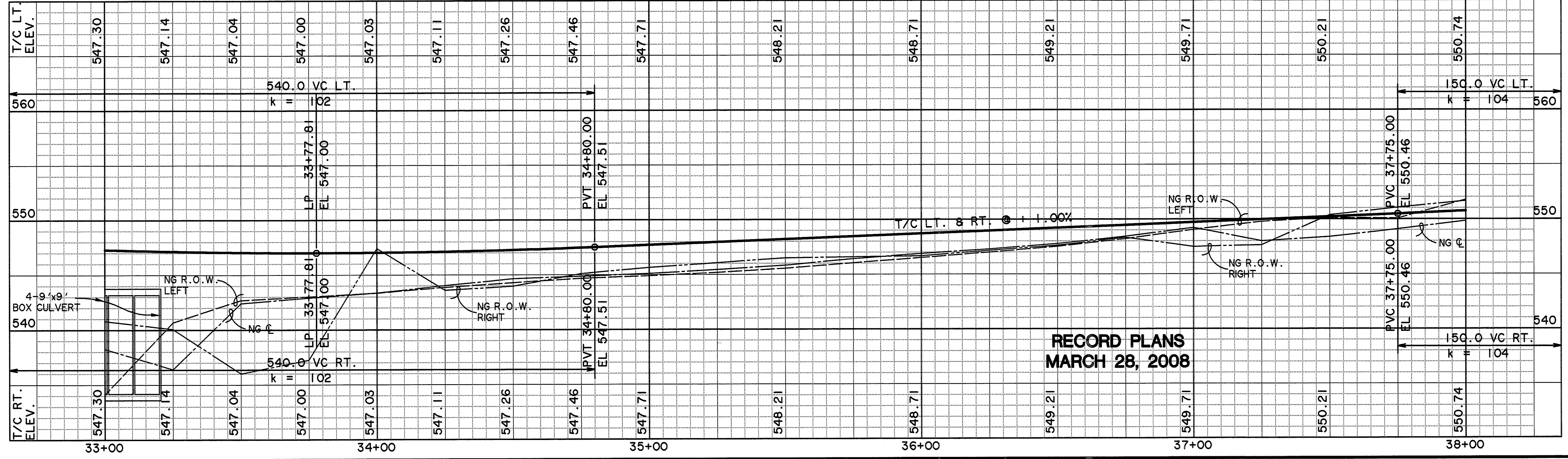
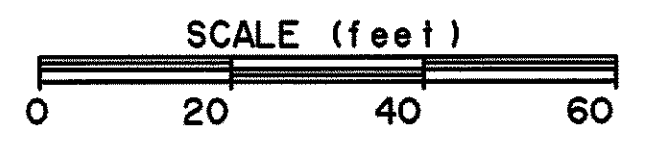
2. BOX CUT ON SOUTHEAST TOP OF HEADWALL ON SOUTH SIDE OF I.H. No. 30 ACCESS ROAD APPROX. 325' EAST OF FUTURE S.H. No. 205 BYPASS AND ON WEST SIDE OF NESBIT METAL CO. ORANGE METAL BLDG.
ELEV. 573.70

| | |
|----------|-----------|
| CURVE C2 | |
| A | 20°19'45" |
| B | 02°56'18" |
| PC | 1950.00 |
| PT | 349.62 |
| PI | 691.88 |
| FI | 31.09 |



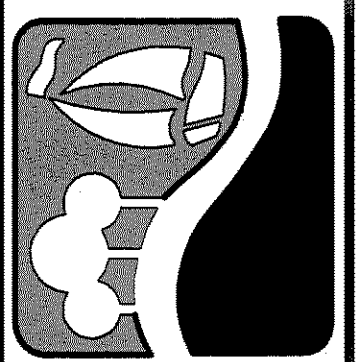
THE CAMBRIDGE COMPANIES, INC.
TRUSTEE
VOL. 99 PG. 1022
D.R.R.C.T.

CAUTION !!
EXISTING UTILITIES ARE INDICATED ON THE PLANS FROM AVAILABLE INFORMATION. IT SHALL BE THE RESPONSIBILITY OF THE CONTRACTOR TO VERIFY THE LOCATION OF ALL UTILITIES, TO NOTIFY ALL UTILITY COMPANIES OF THE CONTRACTORS OPERATIONS, TO PROTECT ALL UTILITIES FROM DAMAGE, TO REPAIR ALL UTILITIES DAMAGED DUE TO THE CONTRACTORS OPERATIONS, AND TO NOTIFY THE ENGINEER PROMPTLY OF ALL CONFLICTS OF THE WORK WITH EXISTING UTILITIES.

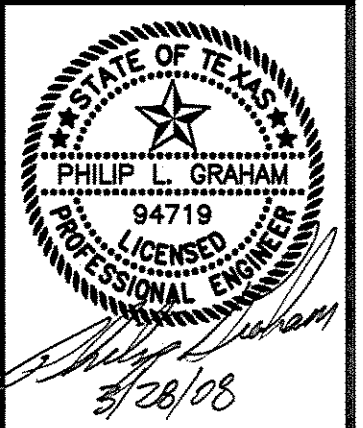


RECORD PLANS
MARCH 28, 2008

PREPARED BY:
WIER & ASSOCIATES, INC.
ENGINEERS SURVEYORS LAND PLANNERS
4300 BELTWAY PLACE SUITE 130 ARLINGTON, TEXAS 76018 METRO (817)467-7700
1380 U.S. HIGHWAY 287 N. SUITE 101 WANSFELD, TEXAS 76783 METRO (817)477-8700
6848 ELM STREET PRSOD, TEXAS 75034 METRO (214)387-8000
www.wierassociates.com



PHASE I S.H. 205 BYPASS
FROM S.H. 276 TO INTERSTATE 30
PAVING
PLAN & PROFILE
STA 33+00 TO 38+00



COPYRIGHT ©
WIER & ASSOCIATES, INC.
LAST SHEET EDIT
DATE 03-28-2008
WA# 04141
SHEET NO.
P105

TIME 6:38 FILE: 04141-PAVES.dwg