

10-31-07	CHANGED S.H. 205 BYPASS TO CITY SECTION	JRA	
NO.	DATE	DESCRIPTION	BY

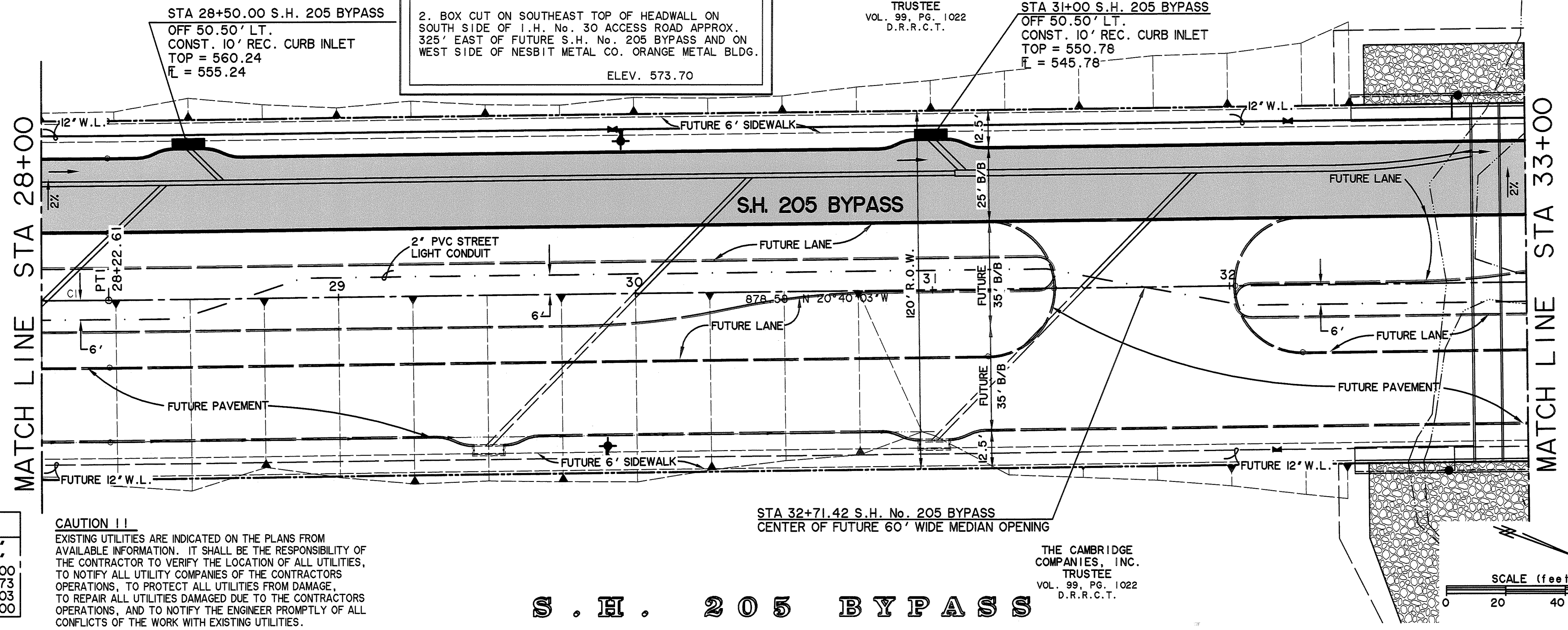
**\*BENCHMARKS\***

1. BOX CUT WITH 'X' CUT IN CENTER OF EXISTING SIDEWALK 2' SOUTH OF NORTH EDGE AT SOUTHEAST CORNER OF S.H. No. 205 BYPASS AND S.H. No. 276  
ELEV. 580.40

2. BOX CUT ON SOUTHEAST TOP OF HEADWALL ON SOUTH SIDE OF I.H. No. 30 ACCESS ROAD APPROX. 325' EAST OF FUTURE S.H. No. 205 BYPASS AND ON WEST SIDE OF NESBIT METAL CO. ORANGE METAL BLDG.  
ELEV. 573.70

THE CAMBRIDGE COMPANIES, INC.  
TRUSTEE  
VOL. 99, PG. 1022  
D.R.R.C.T.

STA 31+00 S.H. 205 BYPASS  
OFF 50.50' LT.  
CONST. 10' REC. CURB INLET  
TOP = 550.78  
R = 545.78



**CURVE CI**

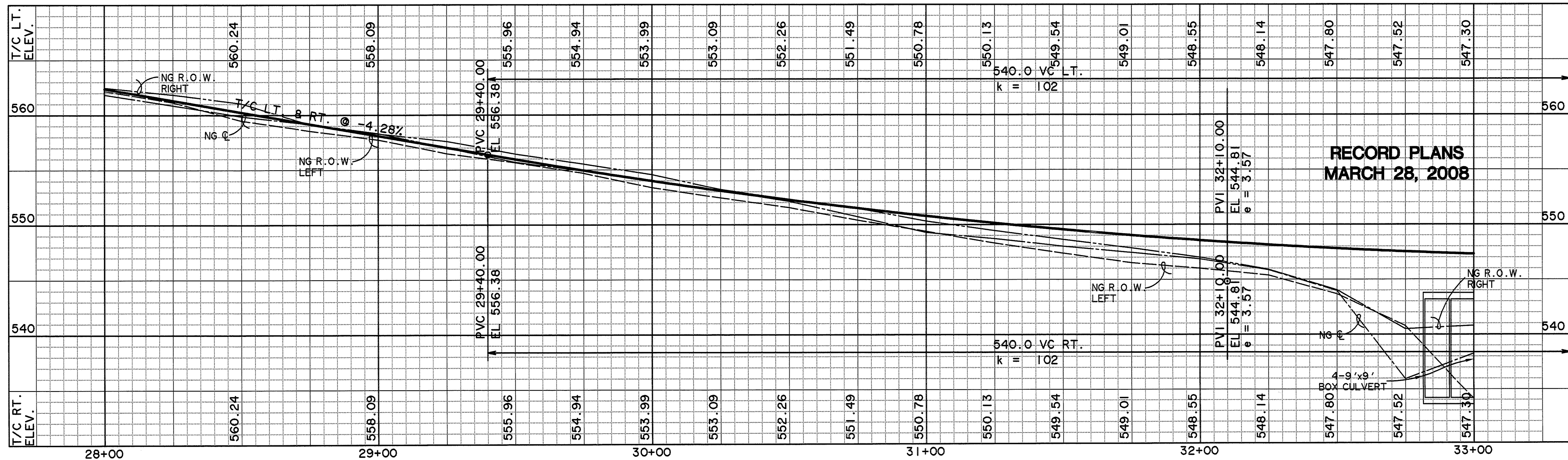
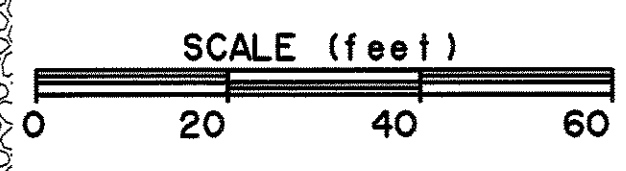
A	19° 35' 45"
D	02° 17' 31"
R	2500.00'
T	431.73'
L	855.03'
E	37.00'

**CAUTION !!**  
EXISTING UTILITIES ARE INDICATED ON THE PLANS FROM AVAILABLE INFORMATION. IT SHALL BE THE RESPONSIBILITY OF THE CONTRACTOR TO VERIFY THE LOCATION OF ALL UTILITIES, TO NOTIFY ALL UTILITY COMPANIES OF THE CONTRACTORS OPERATIONS, TO PROTECT ALL UTILITIES FROM DAMAGE, TO REPAIR ALL UTILITIES DAMAGED DUE TO THE CONTRACTORS OPERATIONS, AND TO NOTIFY THE ENGINEER PROMPTLY OF ALL CONFLICTS OF THE WORK WITH EXISTING UTILITIES.

STA 32+71.42 S.H. No. 205 BYPASS  
CENTER OF FUTURE 60' WIDE MEDIAN OPENING

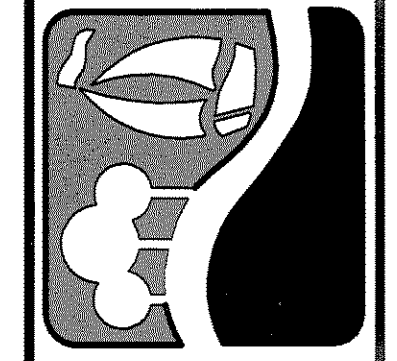
THE CAMBRIDGE COMPANIES, INC.  
TRUSTEE  
VOL. 99, PG. 1022  
D.R.R.C.T.

**S . H . 2 0 5 B Y P A S S**

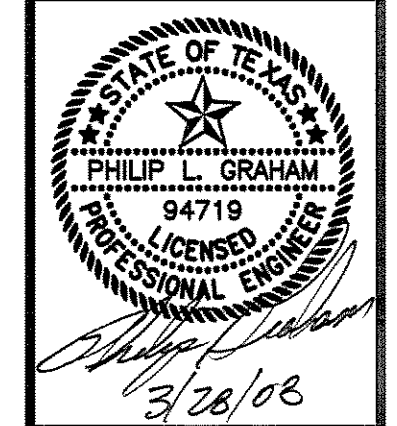


**RECORD PLANS  
MARCH 28, 2008**

PREPARED BY:  
**VIA WIER & ASSOCIATES, INC.**  
ENGINEERS SURVEYORS LAND PLANNERS  
4300 BELWY PLACE SUITE 130 ARLINGTON, TEXAS 76018 METRO (817)467-7700  
1300 U.S. HIGHWAY 287 N. SUITE 101 WASSFELD, TEXAS 76063 METRO (817)477-8700  
6849 ELM STREET FRIEDO, TEXAS 75054 METRO (214)397-8000  
www.via-wier.com



**PHASE I S.H. 205 BYPASS  
FROM S.H. 276 TO INTERSTATE 30  
PAVING  
PLAN & PROFILE  
STA 28+00 TO 33+00**



COPYRIGHT ©  
WIER & ASSOCIATES, INC.  
LAST SHEET EDIT  
DATE 03-28-2008  
WA# 04141  
**SHEET NO.  
P104**