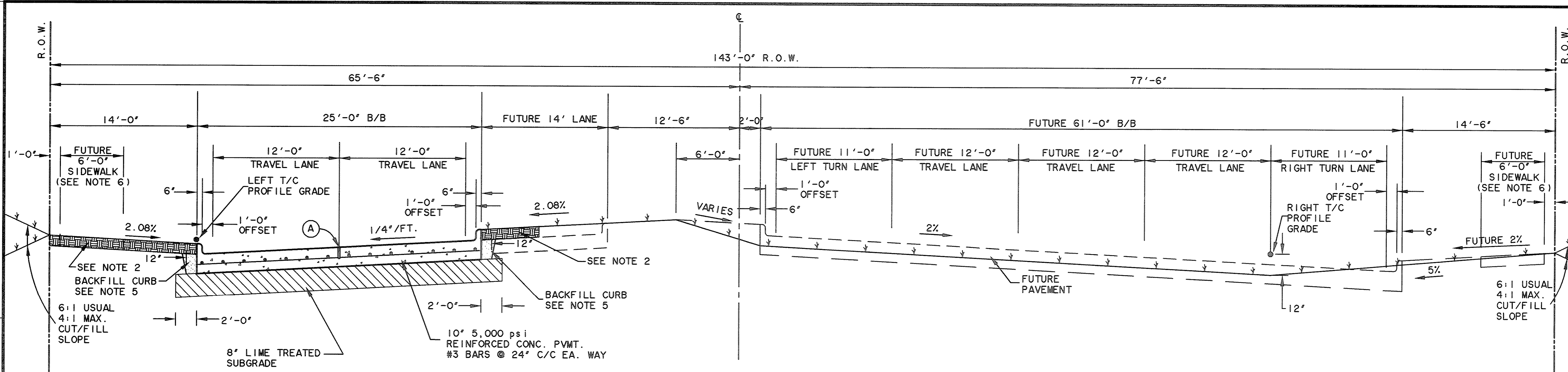


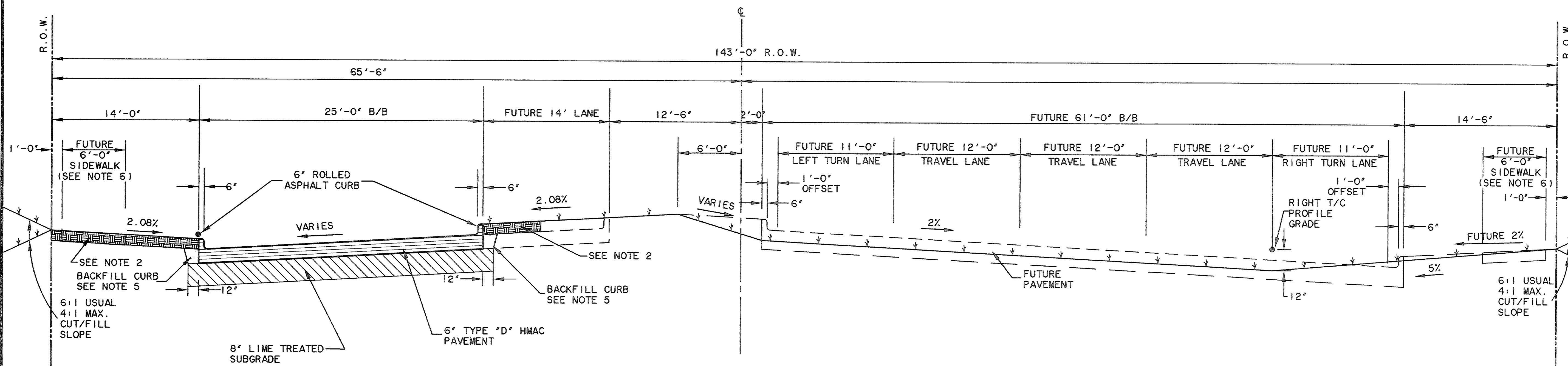
3/28/2008

COPYRIGHT ©
 WIER & ASSOCIATES, INC.
 LAST SHEET EDIT
 DATE 11-13-2007
 WA# 04141

SHEET NO.
 P004



PHASE I TYPICAL SECTION
 STA 47+55 TO 48+00
 N.T.S.



PHASE I TYPICAL SECTION
 STA 48+00 TO I.H. 30
 N.T.S.

(A) SAWED LONGITUDINAL CONTRACTION JOINT

NOTES:

- CONSTRUCT PAVEMENT IN ACCORDANCE WITH CITY STANDARD CONSTRUCTION DETAILS EXCEPT AS NOTED HEREON.
- PLACE BERMUDA GRASS SOD IN PARKWAY AND TO LIMITS SHOWN IN FUTURE MEDIANS AS PER SPECIFICATIONS.
- IMPORT AND PLACE MINIMUM 4" TOPSOIL ON CUT AND FILL SLOPES. HYDROMULCH SEED WITH BERMUDA GRASS AS PER SPECIFICATIONS.
- COMPACT ALL FILLS TO MINIMUM 95% OF STANDARD PROCTOR DENSITY. FILL COMPACTION SHALL BE PERFORMED WITH A SHEEPSFOOT ROLLER.
- BACKFILL ALL CURBS WITH ON-SITE BROWN CLAY SOILS COMPACTED TO A MINIMUM 95% OF STANDARD PROCTOR DENSITY. TYPICAL ALL ROADWAY AND STREET CURBS THIS PROJECT.
- 6'-0" CONCRETE SIDEWALK SHALL BE CONSTRUCTED WITH DEVELOPMENT OF ADJACENT PROPERTY.

RECORD PLANS
MARCH 28, 2008

FILE: 04141-TypSec4Phase1.dwg
 TIME: 10:31