

# CITY OF ROCKWALL, TEXAS

## CONSTRUCTION PLANS

FOR

### PAVING, DRAINAGE & WATER IMPROVEMENTS

TO SERVE

## PHASE I

# S.H. 205 BYPASS

## ROCKWALL COUNTY, TEXAS

**NOTES:**

- STANDARD DRAWINGS OF THE STANDARD SPECIFICATIONS FOR PUBLIC WORKS CONSTRUCTION, NORTH CENTRAL TEXAS, THIRD EDITION, DATED 1998 AND AS MODIFIED BY CITY OF ROCKWALL SPECIAL PROVISIONS SECTION II ARE HEREIN INCORPORATED BY REFERENCE.
- THE STANDARD SHEETS P301 THROUGH P303, M203 THROUGH M206, D301 THROUGH D309, AND T201 THROUGH T221, SPECIFICALLY IDENTIFIED IN THIS INDEX OF SHEETS, HAVE BEEN SELECTED BY ME OR UNDER MY RESPONSIBLE SUPERVISION AS BEING APPLICABLE TO THIS PROJECT.
- SPECIFICATIONS ADOPTED BY THE TEXAS DEPARTMENT OF TRANSPORTATION, JUNE 1, 2004 AND SPECIFICATION ITEMS LISTED AND DATED AS FOLLOWS SHALL GOVERN FOR CONSTRUCTION SHOWN ON SHEETS P101, P108, P109, P110, M102, D111 AND D112 OF THESE PLANS.

**SHEET INDEX**

GENERAL

- COVER SHEET
- RIGHT-OF-WAY DEDICATION PLAT
- S001 GENERAL NOTES & TOPOGRAPHIC LEGEND
- S002-S003 SHEET QUANTITIES

PAVING PLANS

- P001-P006 TYPICAL SECTIONS
- P101-P108 S.H. 205 BYPASS PAVING PLAN & PROFILES
- P109-P110 S.H. 276 WIDENING PAVING PLAN
- P201-P202 S.H. 205 & S.H. 276 ASPHALT TRANSITION PAVING PLAN
- P203 S.H. 205 & I-30 EB FRONTAGE ROAD ASPHALT TRANSITION PAVING PLAN
- P301-P303 MBGF DETAILS
- P304-P306 PAVING DETAILS

PAVEMENT MARKING PLANS

- M101-M102 STRIPING PLANS
- M201-M206 STRIPING DETAILS

DRAINAGE PLANS

- D101 OVERALL DRAINAGE AREA MAP
- D102 DRAINAGE AREA & INLET DESIGN CALCULATIONS
- D103 STORM DRAIN DESIGN CALCULATIONS
- D104-D112 STORM DRAIN PLAN & PROFILES
- D201-D202 STORM DRAIN LATERAL PROFILES
- D203 BOX CULVERT GRADING PLAN
- D301-D309 DRAINAGE DETAILS

WATER PLANS

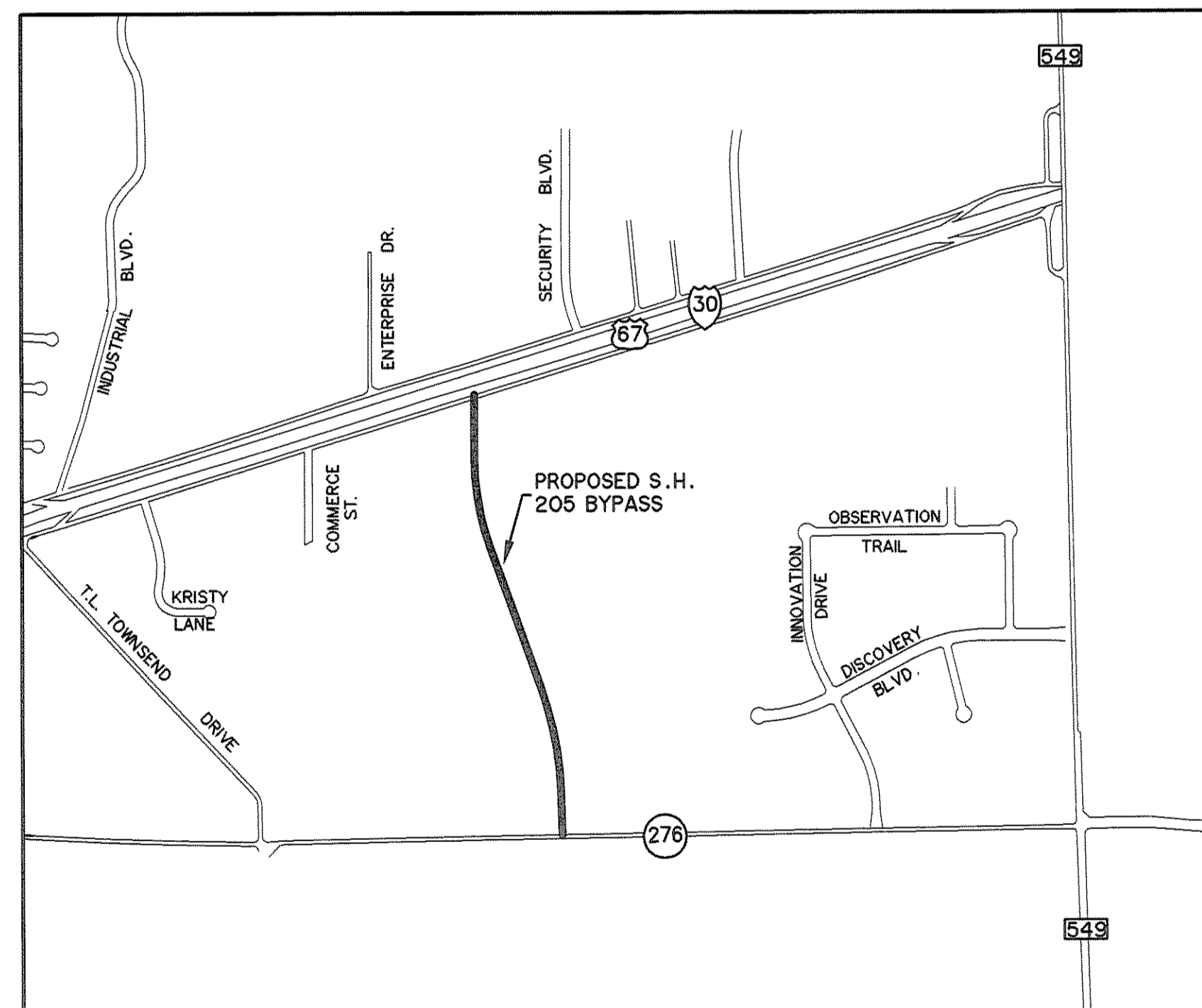
- U101-U107 12' WATER LINE 'A' PLAN & PROFILES
- U108-U114 12' WATER LINE 'B' PLAN & PROFILES

STORMWATER POLLUTION PREVENTION PLANS

- E001-E004 SWP3 NOTES
- E101-E103 SWP3 PLANS
- E201-E202 SWP3 DETAILS

TRAFFIC CONTROL PLANS

- T101-T102 TRAFFIC CONTROL PLANS
- T201-T221 TRAFFIC CONTROL DETAILS



**VICINITY MAP**

N.T.S.

**BILL CECIL - MAYOR**

**COUNCILMEMBERS**

**STEPHEN STRAUGHAN - MAYOR PRO-TEM**

**DAVID SWEET**

**MATT SCOTT**

**GLEN FARRIS**

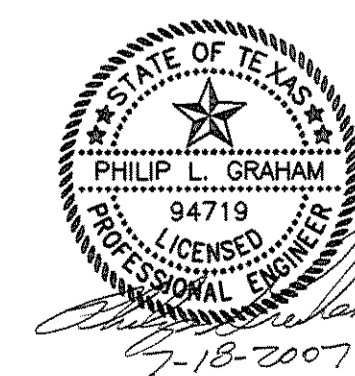
**MARGO NIELSEN**

**CLIFF SEVIER**

**JULIE COUCH - City Manager**

**CHUCK TODD, P.E. - City Engineer**

PREPARED BY:  
**WIA WIER & ASSOCIATES, INC.**  
 ENGINEERS SURVEYORS LAND PLANNERS  
 4300 BELTWAY PLACE SUITE 130 ARLINGTON, TEXAS 76018 METRO (817)467-7700  
 1380 U.S. HIGHWAY 287 N, SUITE 101 MANSFIELD, TEXAS 76063 METRO (817)477-8700  
 6849 ELM STREET FRISCO, TEXAS 75034 METRO (214)387-8000  
 www.WierAssociates.com



RECORD PLANS  
 MARCH 28, 2008