

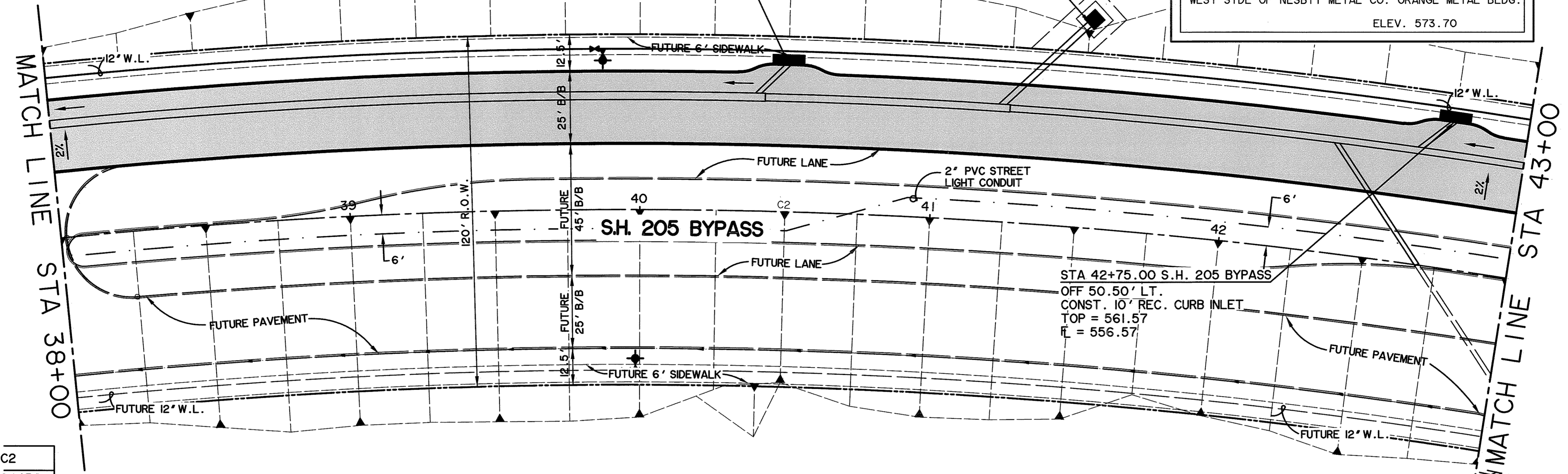
CAUTION !!
 EXISTING UTILITIES ARE INDICATED ON THE PLANS FROM AVAILABLE INFORMATION. IT SHALL BE THE RESPONSIBILITY OF THE CONTRACTOR TO VERIFY THE LOCATION OF ALL UTILITIES, TO NOTIFY ALL UTILITY COMPANIES OF THE CONTRACTORS OPERATIONS, TO PROTECT ALL UTILITIES FROM DAMAGE, TO REPAIR ALL UTILITIES DAMAGED DUE TO THE CONTRACTORS OPERATIONS, AND TO NOTIFY THE ENGINEER PROMPTLY OF ALL CONFLICTS OF THE WORK WITH EXISTING UTILITIES.

THE CAMBRIDGE COMPANIES, INC. TRUSTEE
 VOL. 99, PG. 1022
 D.R.R.C.T.

STA 40+50.00 S.H. 205 BYPASS
 OFF 50.50' LT.
 CONST. 10' REC. CURB INLET
 TOP = 556.09
 FL = 551.09

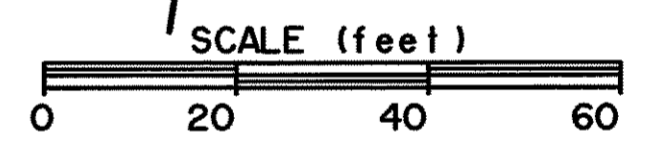
STA 41+51.32 S.H. 205 BYPASS
 OFF 71.46' LT.
 Q 4'x4' DROP INLET
 TOP = 560.43
 THROAT = 559.43
 FL = 554.93

BENCHMARK
 1. BOX CUT WITH 'X' CUT IN CENTER OF EXISTING SIDEWALK 2' SOUTH OF NORTH EDGE AT SOUTHEAST CORNER OF S.H. No. 205 BYPASS AND S.H. No. 276
 ELEV. 580.40
 2. BOX CUT ON SOUTHEAST TOP OF HEADWALL ON SOUTH SIDE OF I.H. No. 30 ACCESS ROAD APPROX. 325' EAST OF FUTURE S.H. No. 205 BYPASS AND ON WEST SIDE OF NESBIT METAL CO. ORANGE METAL BLDG.
 ELEV. 573.70

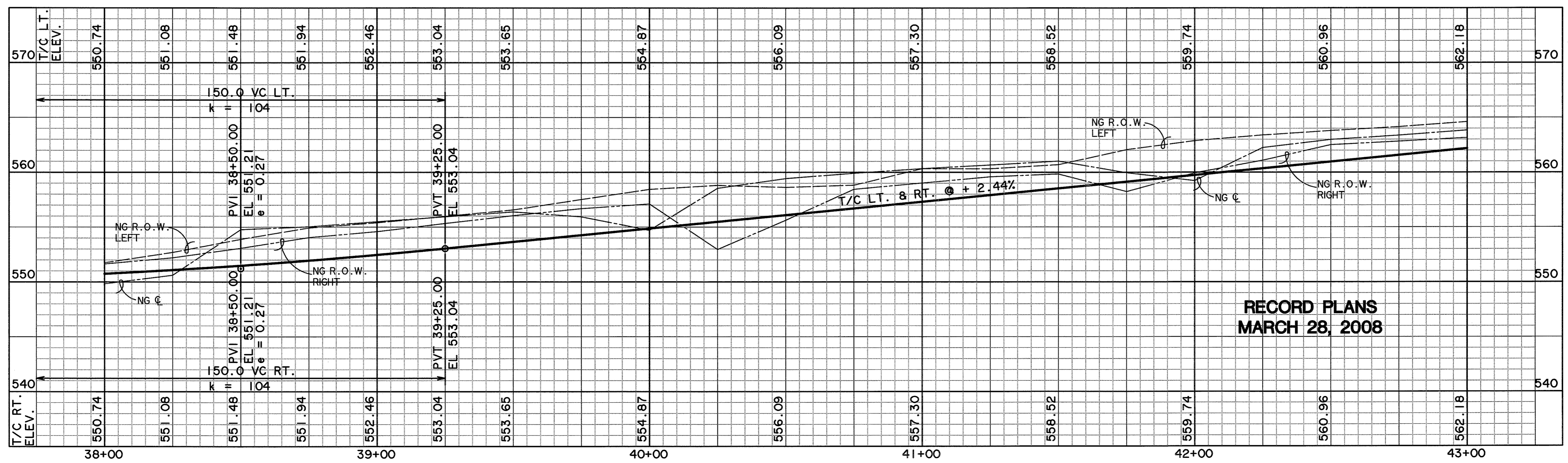


CURVE C2	
A	20° 19' 45"
D	02° 56' 18"
T	1950.00
L	349.62
E	691.88
	31.09

THE CAMBRIDGE COMPANIES, INC. TRUSTEE
 VOL. 99, PG. 1022
 D.R.R.C.T.

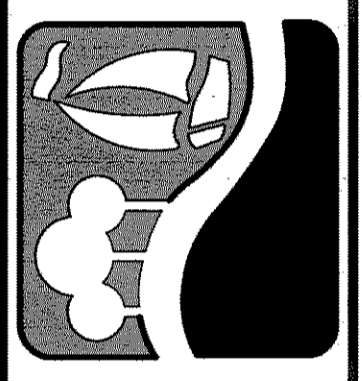


S . H . 2 0 5 B Y P A S S

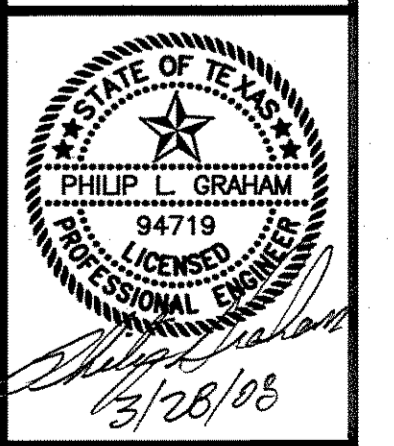


**RECORD PLANS
 MARCH 28, 2008**

PREPARED BY:
VIA WIER & ASSOCIATES, INC.
 ENGINEERS SURVEYORS LAND PLANNERS
 4300 BELTWAY PLACE SUITE 130 ARLINGTON, TEXAS 76018 METRO (817)467-7700
 1380 U.S. HIGHWAY 287 N. SUITE 101 WANSFELD, TEXAS 76783 METRO (817)477-8700
 6848 ELM STREET PERSCO, TEXAS 75084 METRO (214)387-8000
 www.viawier.com



**PHASE I S.H. 205 BYPASS
 FROM S.H. 276 TO INTERSTATE 30
 PAVING
 PLAN & PROFILE
 STA 38+00 TO 43+00**



COPYRIGHT ©
 WIER & ASSOCIATES, INC.
 LAST SHEET EDIT
 DATE 03-28-2008
 WA# 04141
**SHEET NO.
 P106**

TIME 6:40 FILE: 04141-PAVE6.dwg