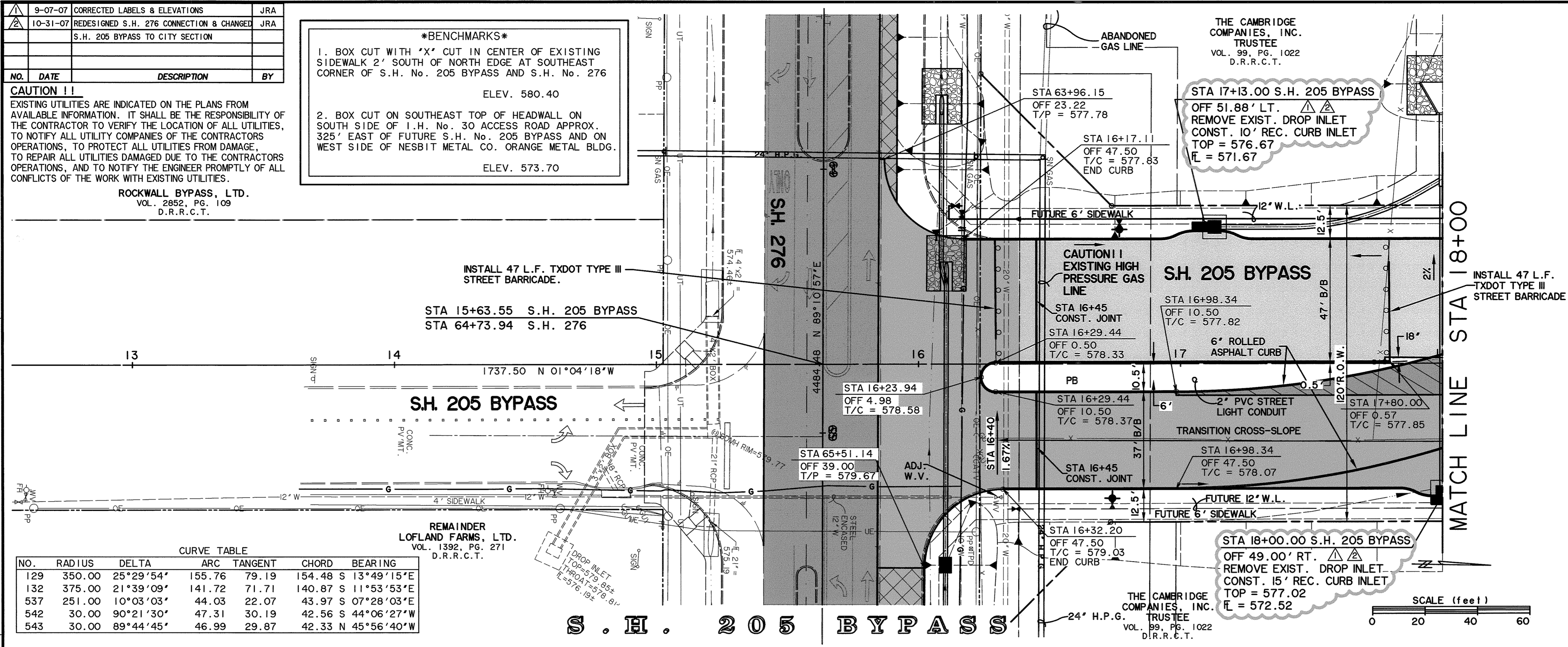


9-07-07	CORRECTED LABELS & ELEVATIONS	JRA	
10-31-07	REDESIGNED S.H. 276 CONNECTION & CHANGED S.H. 205 BYPASS TO CITY SECTION	JRA	
NO.	DATE	DESCRIPTION	BY

CAUTION !!
 EXISTING UTILITIES ARE INDICATED ON THE PLANS FROM AVAILABLE INFORMATION. IT SHALL BE THE RESPONSIBILITY OF THE CONTRACTOR TO VERIFY THE LOCATION OF ALL UTILITIES, TO NOTIFY ALL UTILITY COMPANIES OF THE CONTRACTORS OPERATIONS, TO PROTECT ALL UTILITIES FROM DAMAGE, TO REPAIR ALL UTILITIES DAMAGED DUE TO THE CONTRACTORS OPERATIONS, AND TO NOTIFY THE ENGINEER PROMPTLY OF ALL CONFLICTS OF THE WORK WITH EXISTING UTILITIES.

ROCKWALL BYPASS, LTD.
 VOL. 2852, PG. 109
 D.R.R.C.T.

BENCHMARKS
 1. BOX CUT WITH 'X' CUT IN CENTER OF EXISTING SIDEWALK 2' SOUTH OF NORTH EDGE AT SOUTHEAST CORNER OF S.H. No. 205 BYPASS AND S.H. No. 276
 ELEV. 580.40
 2. BOX CUT ON SOUTHEAST TOP OF HEADWALL ON SOUTH SIDE OF I.H. No. 30 ACCESS ROAD APPROX. 325' EAST OF FUTURE S.H. No. 205 BYPASS AND ON WEST SIDE OF NESBIT METAL CO. ORANGE METAL BLDG.
 ELEV. 573.70



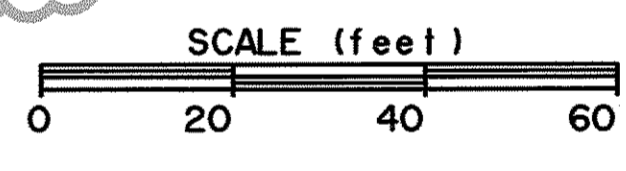
CURVE TABLE

NO.	RADIUS	DELTA	ARC TANGENT	CHORD	BEARING
129	350.00	25°29'54"	155.76	79.19	154.48 S 13°49'15"E
132	375.00	21°39'09"	141.72	71.71	140.87 S 11°53'53"E
537	251.00	10°03'03"	44.03	22.07	43.97 S 07°28'03"E
542	30.00	90°21'30"	47.31	30.19	42.56 S 44°06'27"W
543	30.00	89°44'45"	46.99	29.87	42.33 N 45°56'40"W

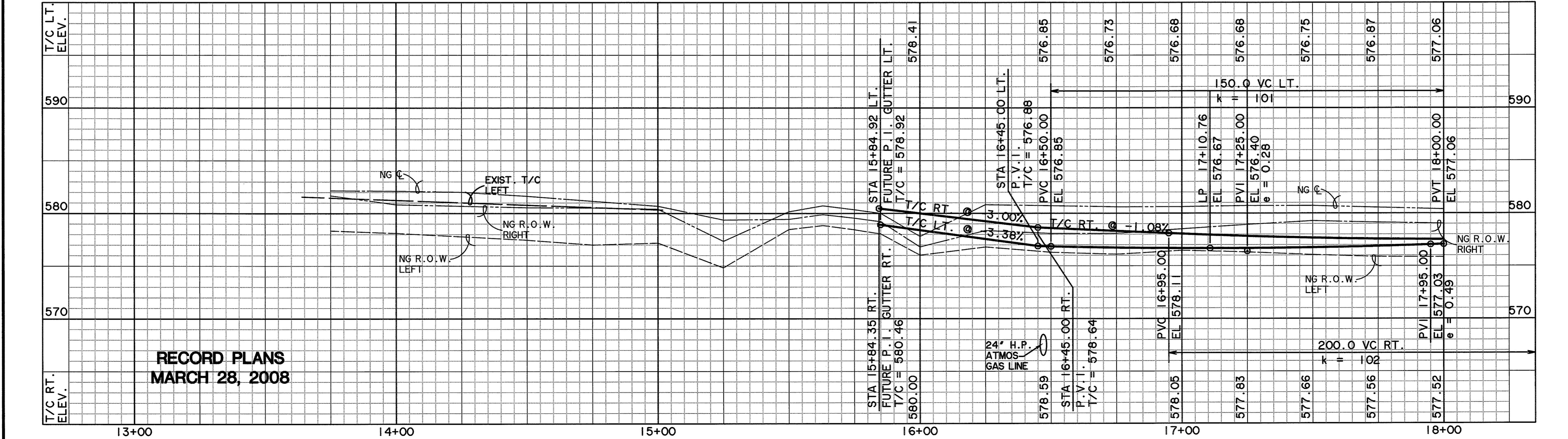
REMAINDER
 LOFLAND FARMS, LTD.
 VOL. 1392, PG. 271
 D.R.R.C.T.

THE CAMBRIDGE
 COMPANIES, INC.
 TRUSTEE
 VOL. 99, PG. 1022
 D.R.R.C.T.

STA 18+00.00 S.H. 205 BYPASS
 OFF 49.00' RT. REMOVE EXIST. DROP INLET
 CONST. 15' REC. CURB INLET
 TOP = 577.02
 FL = 572.52

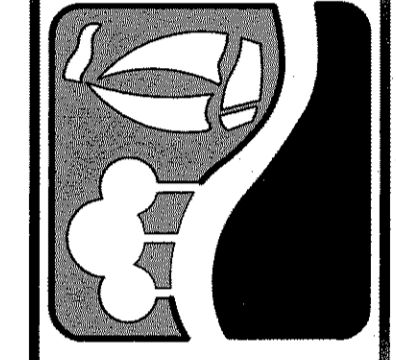


S . H . 2 0 5 B Y P A S S

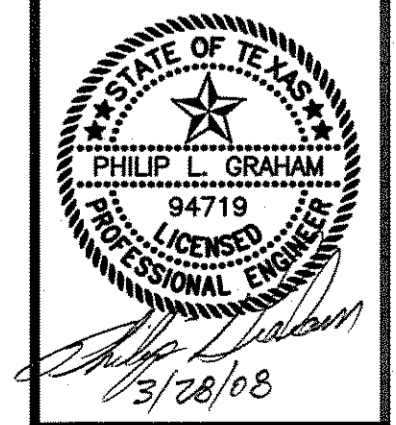


**RECORD PLANS
 MARCH 28, 2008**

PREPARED BY:
WIER & ASSOCIATES, INC.
 ENGINEERS SURVEYORS LAND PLANNERS
 4300 BELWAY PLACE SUITE 130 ARLINGTON, TEXAS 76018 METRO (817)467-7700
 1380 U.S. HIGHWAY 287 N. SUITE 101 MANSFIELD, TEXAS 76063 METRO (817)477-8700
 6849 ELM STREET FRESNO, TEXAS 75064 METRO (214)387-8000
 www.wierassociates.com



**PHASE I S.H. 205 BYPASS
 FROM S.H. 276 TO INTERSTATE 30
 PAVING
 PLAN & PROFILE
 STA 13+00s TO 18+00**



COPYRIGHT ©
 WIER & ASSOCIATES, INC.
 LAST SHEET EDIT
 DATE 03-28-2008
 WA# 04141
**SHEET NO.
 P101**

TIME: 6:34 FILE: 04141-PAVE1.dwg