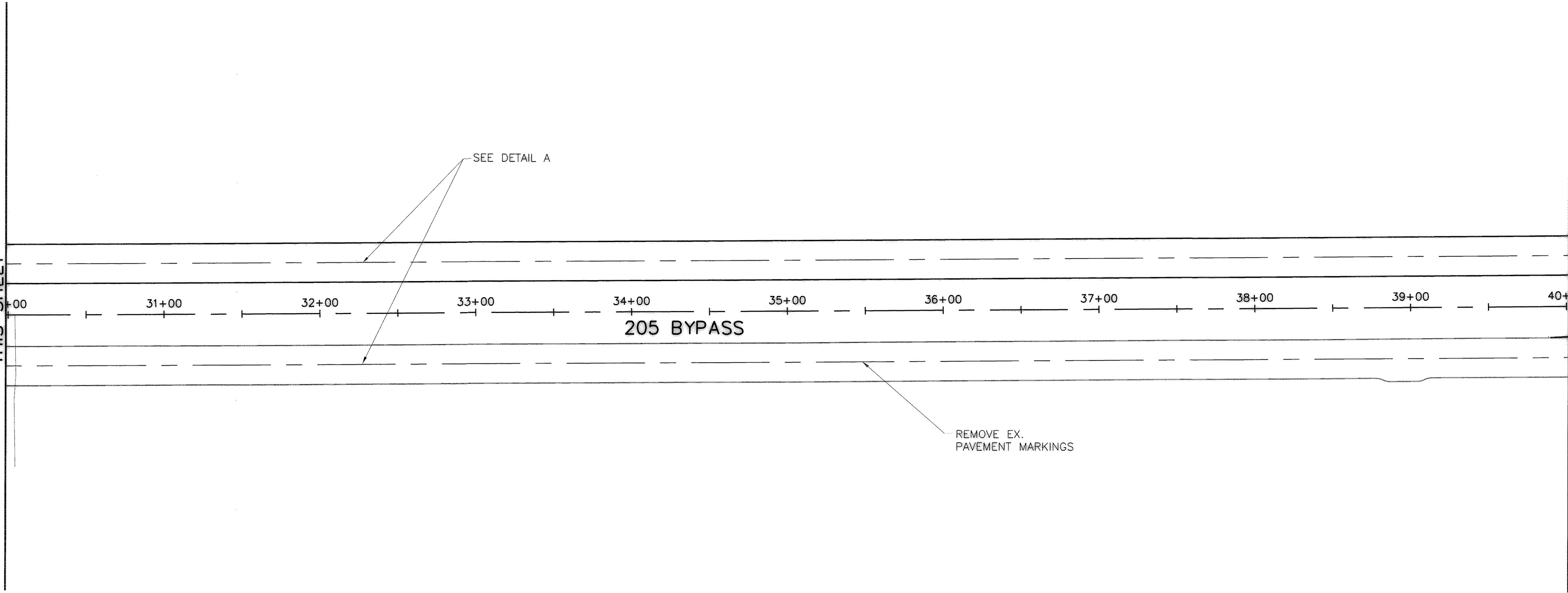


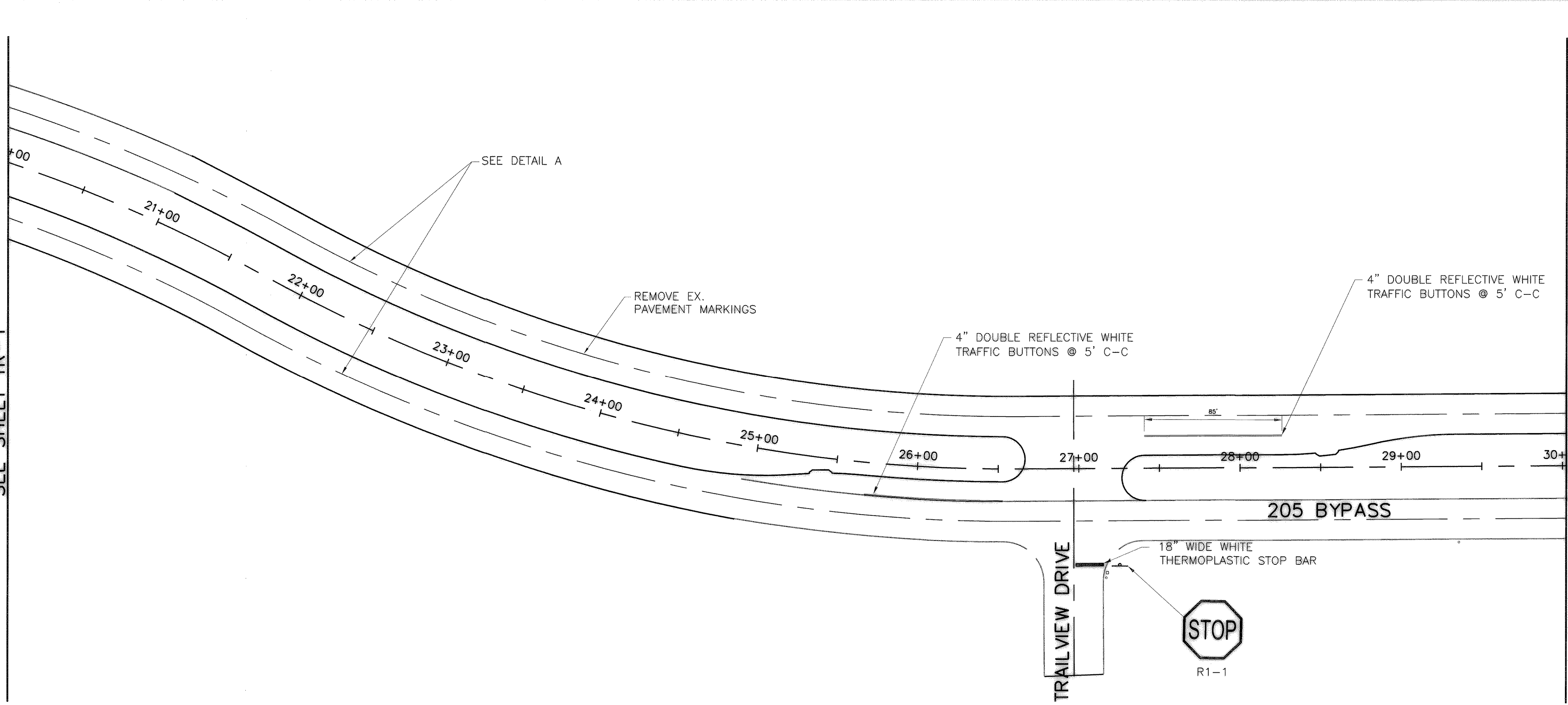
ACAD: Rel 17.0s (LMS Tech) User: KAS
 [R:\06114\JMS\SRV2\N:\205 DALLAS N DRIVE\BASE\CV-RDS-PL-P\WK02.DWG LAYOUT: Layout1
 NOV 17 2006 4:01:15 A.M. LTS: 1 PSTS: 1 TWST: 889
 4 REFERENCE FILES: N:\205 DALLAS N DRIVE\BASE\CV-ALL-PL-SHAD, N:\205 DALLAS N DRIVE\BASE\CV-ALL-PL-SITE, N:\205 DALLAS N DRIVE\BASE\CV-ALL-PL-TOPO, and N:\205 DALLAS N DRIVE\STANDARD\34BORDER

MATCHLINE STA 30+00
THIS SHEET

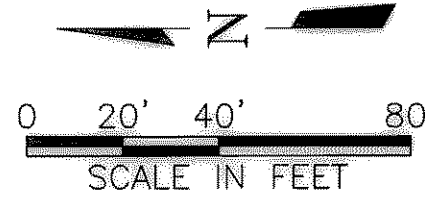


MATCHLINE STA 40+00
SEE SHEET TR-3

MATCHLINE STA 20+00
SEE SHEET TR-1



MATCHLINE STA 30+00
THIS SHEET



This Record Drawing is a combination of the sealed engineering contract drawings for this project, modified by information furnished by the contractor during the construction of the project. The contractor is responsible for the accuracy of the information furnished during the project. The original sealed drawings are on file at the offices of FREESE AND NICHOLS, INC. 4055 INTERNATIONAL PLAZA, SUITE 200 FORT WORTH, TEXAS 76109-4895 U.S.A. RECORD DRAWINGS PREPARED ON: 3/16/2009

NO. ISSUE	BY	DATE	FOR JOB NO.
			ROK06114
		05/2007	DESIGNED KAS
			DRAWN CHM
		5/12/09	CHECKED TBS
RECORD DRAWINGS	CJP	FILE NAME	CV-RDS-PL-P\WK02.DWG
VERIFY SCALE	Bar is one inch on original drawing. Adjust scale on this sheet.		

CITY OF ROCKWALL, TEXAS
 205 BYPASS CONSTRUCTION
 CIVIL
 PERMANENT PAVEMENT MARKINGS

THIS SEAL IS VALID ONLY WHEN APPLIED TO THIS DOCUMENT AND THE PROJECT. IT IS NOT VALID FOR ANY OTHER PROJECT. THE SEALING ENGINEER IS NOT RESPONSIBLE FOR THE ACCURACY OF THE INFORMATION FURNISHED BY THE CONTRACTOR. THE SEALING ENGINEER IS AN ENGINEER UNDER THE TEXAS ENGINEERING PRACTICE ACT.