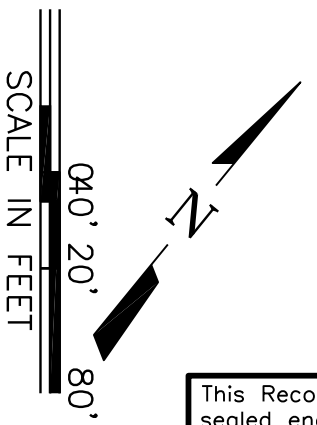


HICKORY RIDGE PHASE FOUR  
 CABINET E. SLIDE 288  
 P.R.C.T.  
 SHEET 2 OF 6

NEWMAN LOFLAND ESTATE  
 VOLUME 9, PAGE 548  
 D.R.C.T.



CURVE DATA  
 R=16298.08  
 L=843.62  
 Tm=421.90  
 A=257.57

NOTE: SEE STRIPING AND SIGNAGE PLANS  
 FOR INTERSECTION DETAILS. (TR-4)

CP-14	72+13.67, 487' RT	7,012,486.81	2,602,565.22	556.37	COTTON SPIKE
CP-15	72+11.97, 187' LT	7,011,959.66	2,602,984.21	554.32	COTTON SPIKE

This Record Drawing is a combination of the sealed engineering contract drawings for this project, modified by information furnished by the contractor reflecting changes in the Project made during construction. The original sealed drawings are on file at the offices of  
**FREESSE AND NICHOLS, INC.**  
 4055 INTERNATIONAL PLAZA, SUITE 200  
 FORT WORTH, TEXAS 76109-4895  
 (817) 735-7300 (817) 735-7300  
 RECORD DRAWINGS PREPARED ON: 3/13/2009

THE SEAL THAT ORIGINALLY APPEARED ON THIS DOCUMENT WAS AUTHORIZED BY TRICIA N. HATLEY, P.E., TEXAS NO. 83386 ON 7/25/2008. ALTERATION OF A SEALED DOCUMENT WITHOUT PROPER NOTIFICATION OF THE RESPONSIBLE ENGINEER IS AN OFFENSE UNDER THE TEXAS ENGINEERING PRACTICE ACT.

NO.	ISSUE	BY	DATE	F&N JOB NO.
				ROK06114
			05/2007	DATE
			KAS	DESIGNED
			KAS	DRAWN
				CHECKED
				TBS
FILE NAME	CV-RDS-PP-PAVE16.dwg			
DATE	5/12/09			
DESIGNED	KAS			
DRAWN	KAS			
CHECKED	TBS			
TBS	TBS			

CITY OF ROCKWALL, TEXAS  
**205 BYPASS CONSTRUCTION**  
 CIVIL  
**INTERSECTION DIAGRAM**  
**STATE HIGHWAY 205 AND 205 BYPASS**

**Freese and Nichols**  
 1701 N. Market Street, Suite 500, LB 51  
 Dallas, Texas 75202-2001  
 Phone - (214) 920-2500  
 Fax - (214) 920-2565

SHEET  
**PV-16**  
 21 OF 83