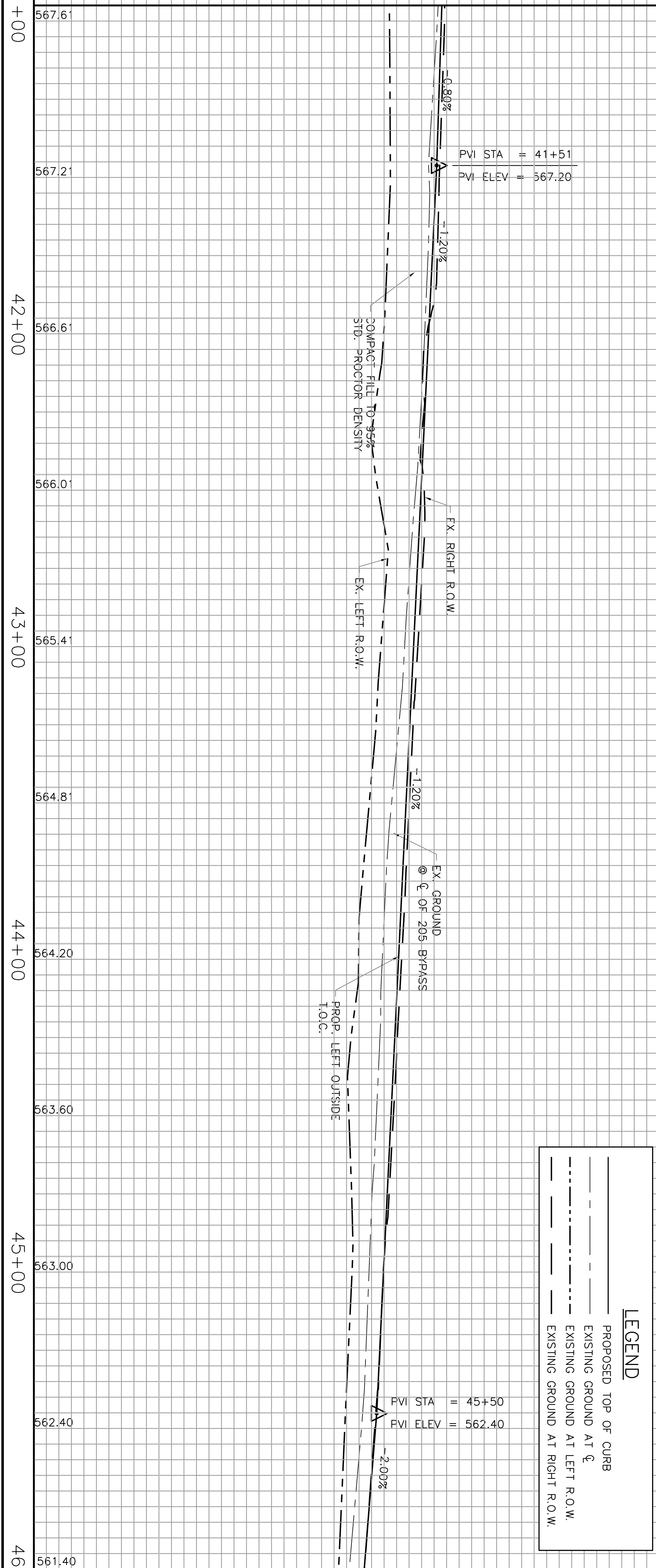


535
540
545
550
555
560
565
570
575
580

MATCHLINE STA 41+00 - SEE SHEET PV-8

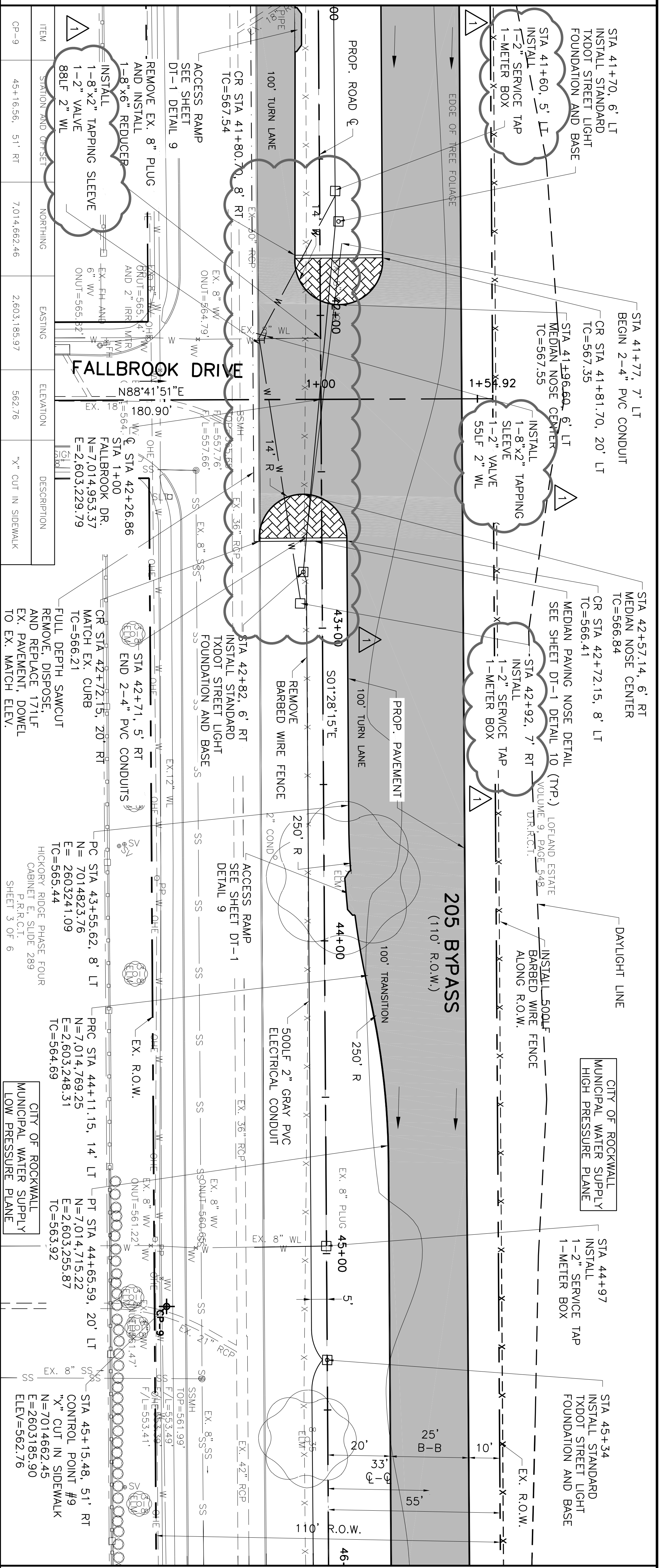
MATCHLINE STA 41+00
SEE SHEET PV-8



MATCHLINE STA 46+00 SEE SHEET PV-10

MATCHLINE STA 46+00
SEE SHEET PV-10

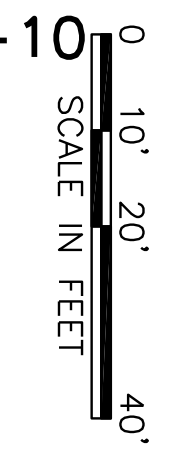
535
540
545
550
555
560
565
570
575
580



LEGEND

- PROPOSED TOP OF CURB
- - - - - EXISTING GROUND AT LEFT R.O.W.
- - - - - EXISTING GROUND AT RIGHT R.O.W.

SCALE:
HORIZ: 1"=20'
VERT: 1"=5'



This Record Drawing is a combination of the sealed engineering contract drawings for this project, modified by information furnished by the contractor reflecting changes in the Project made during construction. The original sealed drawings are on file at the offices of
FREESE AND NICHOLS, INC.
 4055 INTERNATIONAL PLAZA, SUITE 200
 FORT WORTH, TEXAS 76109-4895
 RECORD DRAWINGS, PREPARED ON: 3/13/2009

NO.	ISSUE	BY	DATE	F&N JOB NO.
1	RECORD DRAWINGS	CJP	5/12/09	ROK06114
2	VERIFY SCALE			

Bar is one inch on original drawing. If not one inch on this sheet, adjust scale.

CITY OF ROCKWALL, TEXAS
205 BYPASS CONSTRUCTION
 CIVIL
PAVING PLAN AND PROFILE
 STA 41+00 TO 46+00



THE SEAL THAT ORIGINALLY APPEARED ON THIS DOCUMENT WAS AUTHORIZED BY TRICIA H. HATLEY, P.E., TEXAS REG. NO. 8356, ON 2/25/2009. ALTERATION OF A SEALED DOCUMENT WITHOUT PROPER NOTIFICATION OF THE RESPONSIBLE ENGINEER IS AN OFFENSE UNDER THE TEXAS ENGINEERING PRACTICE ACT.