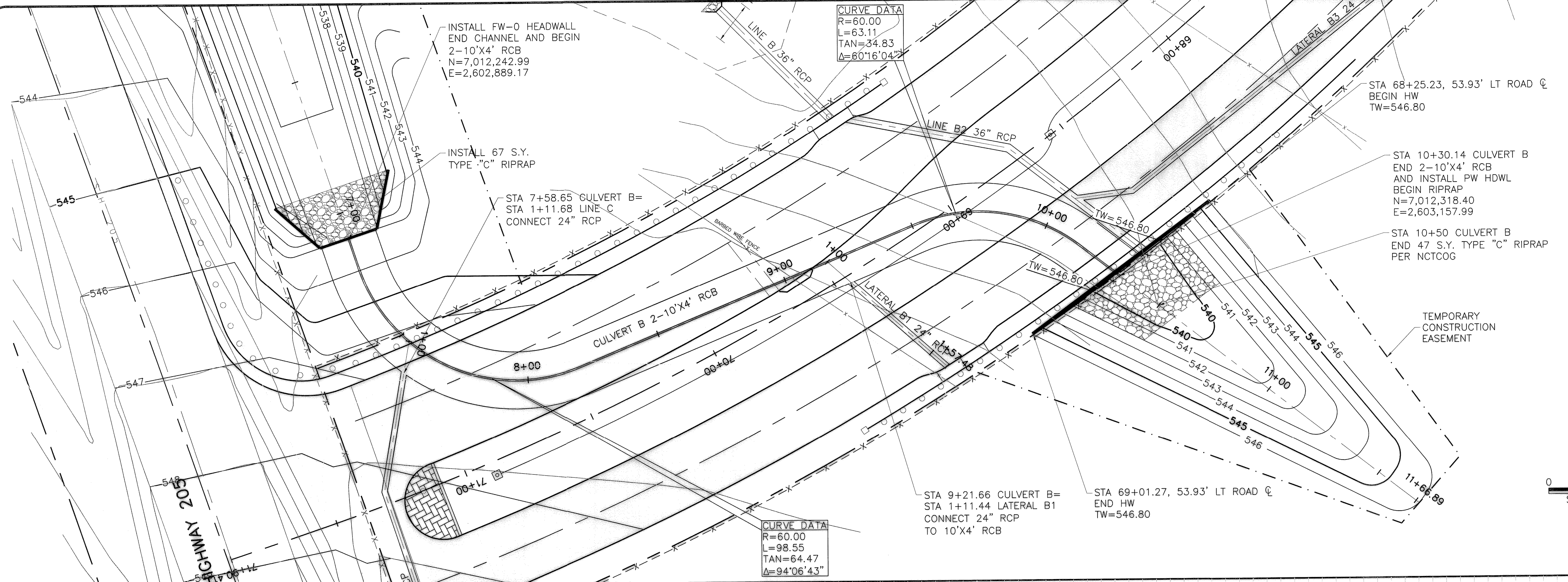
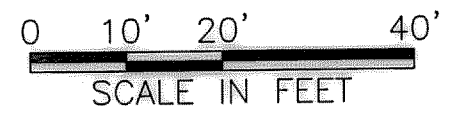


ACAD Rel 17.1s (LMS Tech) User: IS  
 [ROK06114] [DALSRY] [IN:RECORD\FV\CV-DWG-PP-STRM08.DWG LAYOUT: Layout1  
 APR 30, 2009 12:14:47 P.M. LTS: 1.00 PLS: 1 TWST: 341.2, 0.0  
 7 REFERENCE FILES: \SEAL\5183882\N:\BASE\CV-ALL-PL-SHAD, N:\BASE\CV-ALL-PL-SITE, N:\BASE\CV-ALL-PL-TOPO, N:\BASE\CV-ALL-PR-STORM, and N:\RECORD\N:\STANDARD\_34BORDER

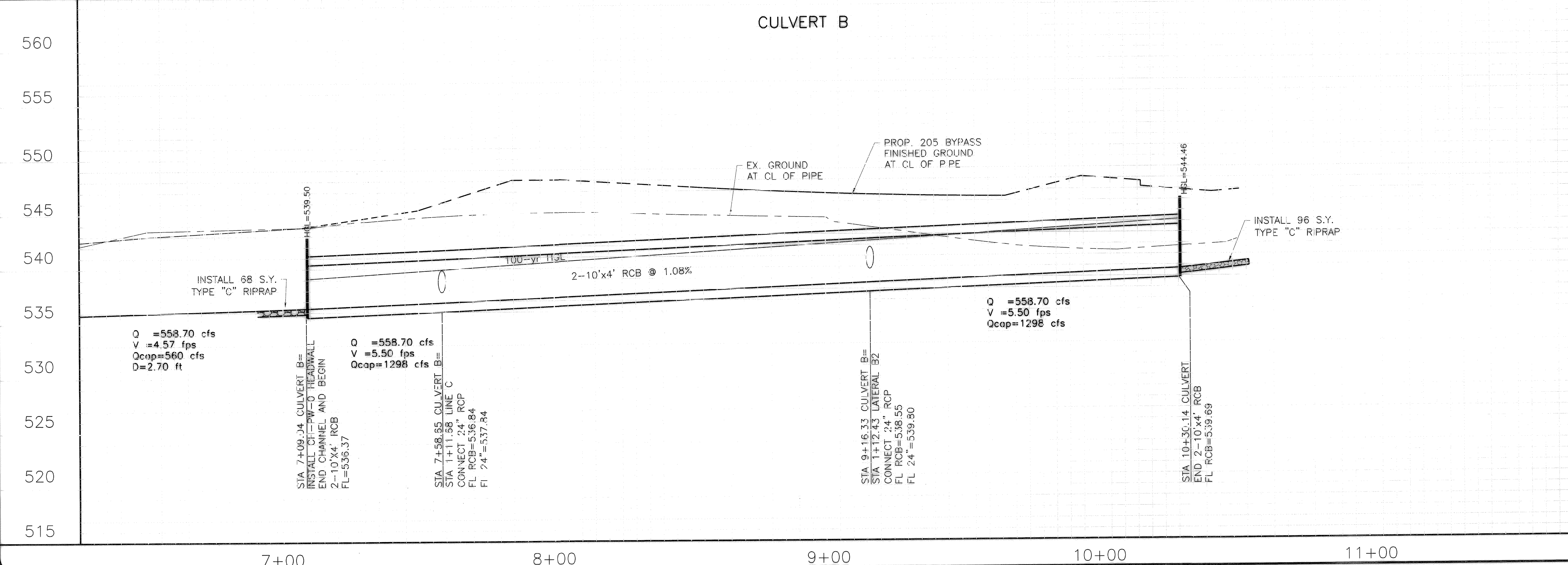


This Record Drawing is a combination of the selected engineering contract drawings for this project, modified by information furnished to the project during construction. The original project drawings are on file at the offices of FREESE AND NICHOLS, INC.  
 4055 INTERNATIONAL PLAZA, SUITE 200  
 FORT WORTH, TEXAS 76104-4695  
 (817) 735-7300  
 RECORD DRAWINGS PREPARED ON: 3/16/2009

THIS DOCUMENT IS THE PROPERTY OF FREESE AND NICHOLS, INC. IT IS TO BE USED ONLY FOR THE PROJECT AND SITE SPECIFICALLY IDENTIFIED HEREIN. IT IS NOT TO BE REPRODUCED, COPIED, OR TRANSMITTED IN ANY FORM OR BY ANY MEANS, ELECTRONIC OR MECHANICAL, WITHOUT THE WRITTEN PERMISSION OF FREESE AND NICHOLS, INC.  
**Freese and Nichols**  
 1701 N. Market Street, Suite 500, LB 51  
 Dallas, Texas 75202-2001  
 Phone: (214) 920-2565  
 Fax: (214) 920-2565



SCALE:  
 HORIZ: 1" = 20'  
 VERT 1" = 5'



CITY OF ROCKWALL, TEXAS  
**205 BYPASS CONSTRUCTION**  
 CIVIL  
**STORM SEWER PLAN AND PROFILE**  
**CULVERT B STATION 7+50-END**

NO.	ISSUE	BY	DATE	FEIN JOB NO.
1	RECORD DRAWINGS	CJP	05/12/09	ROK06114
2	CULVERT HEADWALL CHANGES	KRJ	09/11/08	
3	VERIFY SCALE			

Bar is one inch on original drawing. If not one inch on this sheet, adjust scale.

FILE NAME: CV-DWG-PP-STRM08.dwg

DESIGNED: KAS  
 DRAWN: KAS  
 CHECKED: TBS

SHEET: **SD-8**  
 SEQ. 34 OF 86