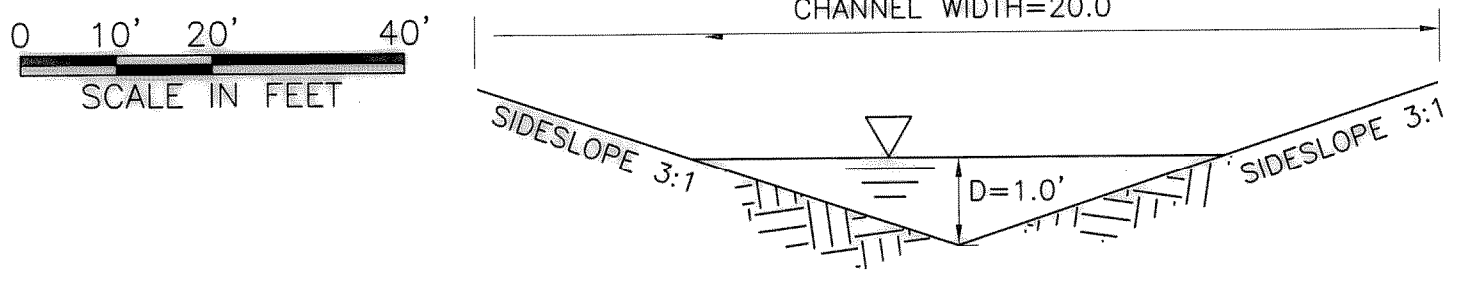


ACAD: Rel 17.0s (LMS Tech) User: KAS  
 [R0K06114]MGSRY2\N\205 DALLAS N DRIVE\PP-STRM07.DWG LAYOUT: Layout1  
 NOV 08 2006 12:50:45 P.M. LTS: 1.00 PSTS: 1 TWIST: 51.1, 0.0, 51.1, 0.0  
 5 REFERENCE FILES: N:\205 DALLAS N DRIVE\BASE\CV-ALL-PL-SHAD. N:\205 DALLAS N DRIVE\BASE\CV-ALL-PL-SITE. N:\205 DALLAS N DRIVE\BASE\CV-ALL-PL-1050. N:\205 DALLAS N DRIVE\BASE\CV-ALL-PR-STORM. and  
 N:\205 DALLAS N DRIVE\STANDARD\34BORDER

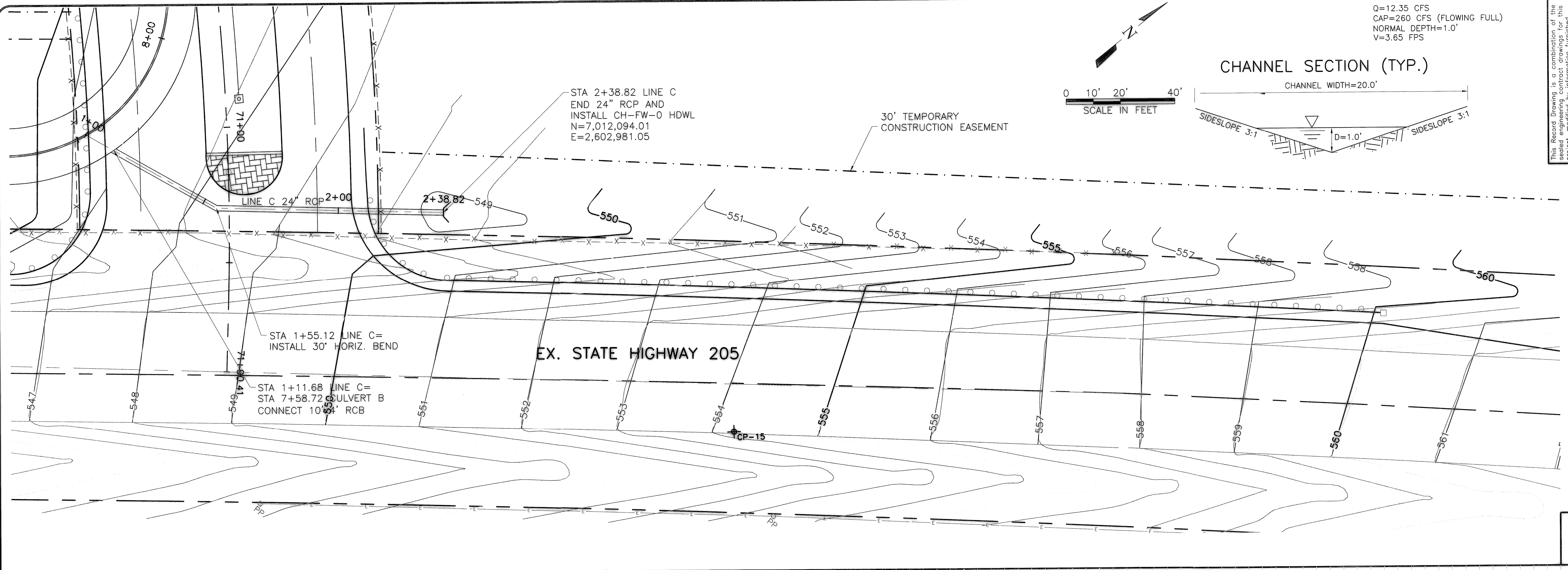
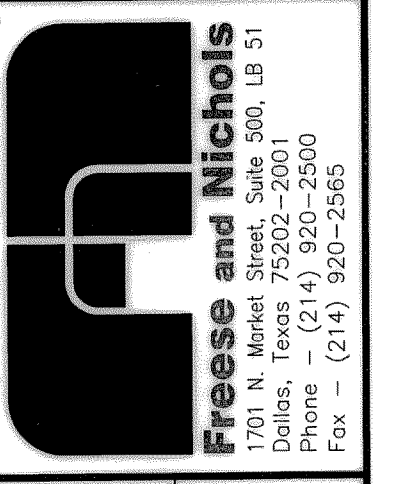
Q=12.35 CFS  
 CAP=260 CFS (FLOWING FULL)  
 NORMAL DEPTH=1.0'  
 V=3.65 FPS

CHANNEL SECTION (TYP.)

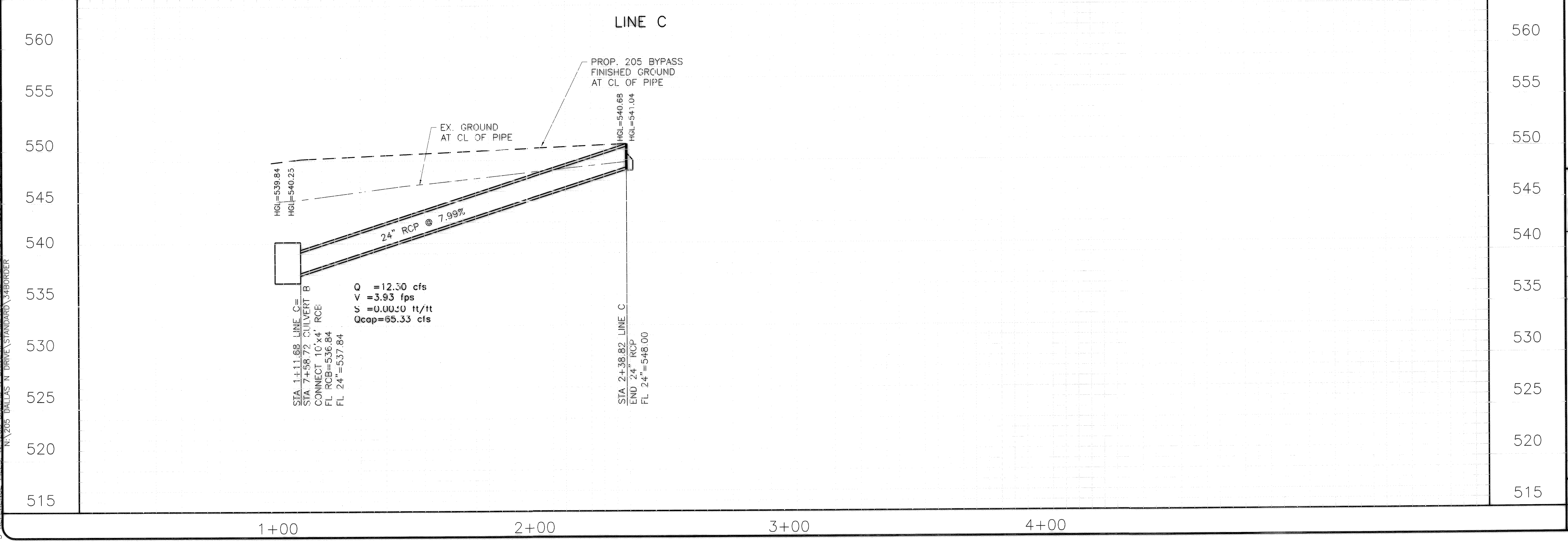


This Record Drawing is a combination of the original drawings and information furnished by the contractor reflecting changes in the project made during construction. The original drawings are the responsibility of the contractor. FREESE AND NICHOLS, INC. 4000 INTERNATIONAL PLAZA, SUITE 200, FORT WORTH, TEXAS 76109-4855 (817) 735-7500 RECORD DRAWING PREPARED ON: 5/12/09

THE SEAL THAT ORIGINALLY APPEARED ON THIS DOCUMENT WAS AUTHORIZED BY FREESE AND NICHOLS, INC. TO BE REPRODUCED FOR THE PROJECT. ANY ALTERATION OF A SEALED DOCUMENT WITHOUT PROPER PERMISSION IS UNLAWFUL. FREESE AND NICHOLS, INC. 4000 INTERNATIONAL PLAZA, SUITE 200, FORT WORTH, TEXAS 76109-4855 (817) 735-7500 RECORD DRAWING PREPARED ON: 5/12/09



SCALE:  
 HORIZ: 1"=20'  
 VERT 1"=5'



CITY OF ROCKWALL, TEXAS  
 205 BYPASS CONSTRUCTION  
 CIVIL  
 STORM SEWER PLAN AND PROFILE  
 CULVERT B STA. 6+00-7+50 & LINE C

NO. ISSUE	BY	DATE	APP. JOB NO.	DATE	DESIGNED	DRAWN	REVISION	FILE NAME
			R0K06114	05/2007	KAS	KAS		
							5/12/09	CV-DNG-PP-STRM07.dwg

RECORD DRAWINGS  
 Bar is one inch on original  
 VERIFY SCALE Bar is one inch on original  
 0 this sheet, adjust scale.

SHEET SD-7  
 SEQ. 33 OF 86