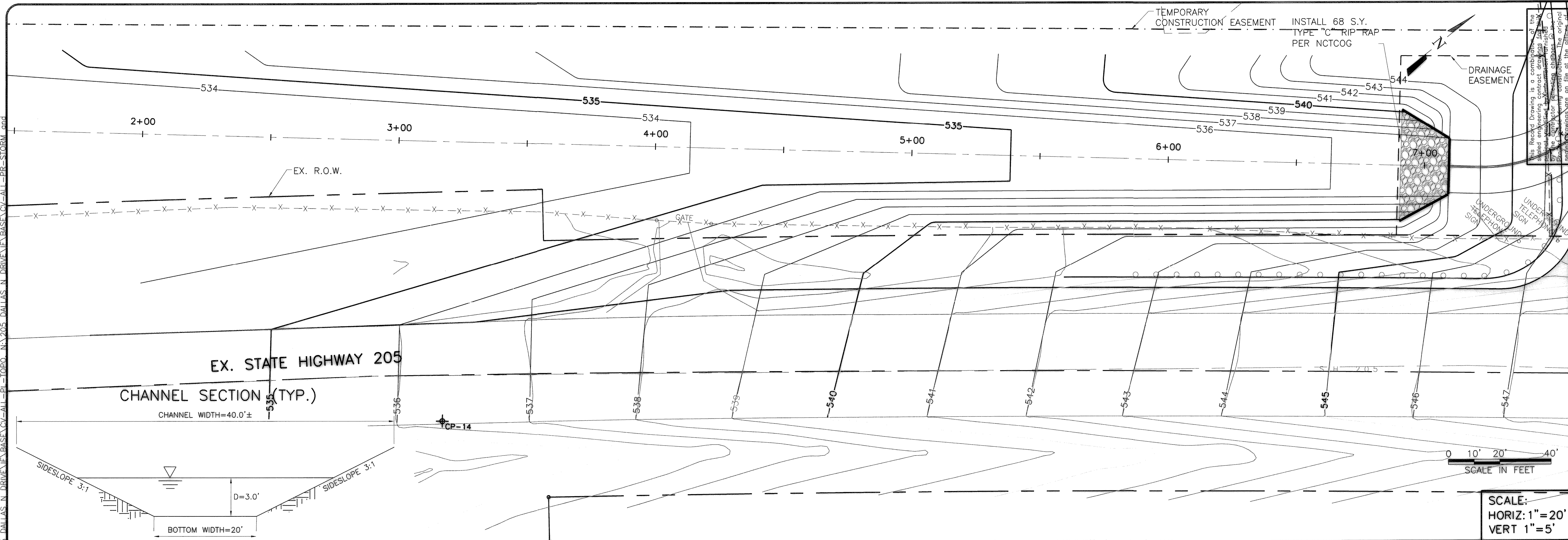
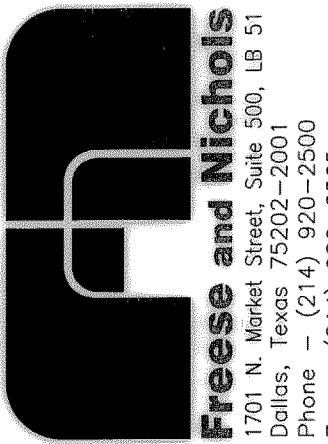


ACAD Rel 17.0s (LMS Tech) User: KAS  
[R0K06114]MCSR2\205 DALLAS N DRIVE\BASE\CV-PP-STRM06.DWG LAYOUT: Layout1  
NOV 08, 2006 12:44:14 P.M. LTS: 1.00 PSLTS: 1 TWIST: 51.1, 0.0  
5 REFERENCE FILES: N:\205 DALLAS N DRIVE\BASE\CV-PP-STRM06.DWG  
N:\205 DALLAS N DRIVE\STANDARD\34BORDER

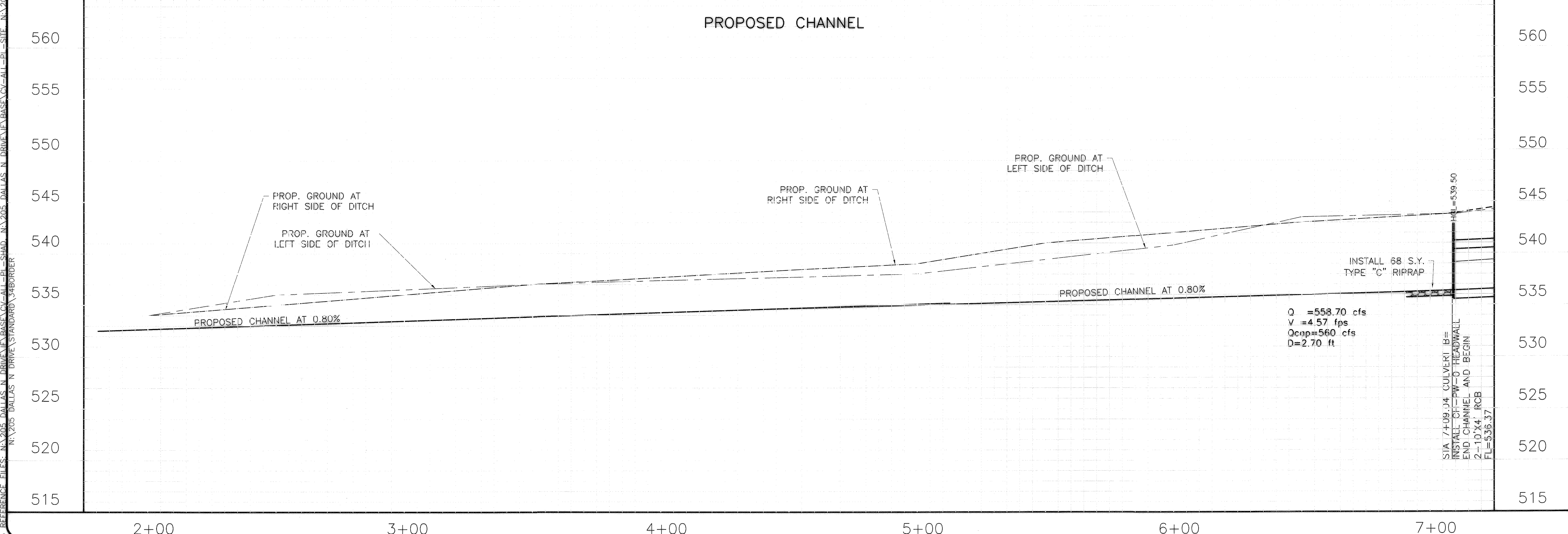


TEMPORARY CONSTRUCTION EASEMENT  
INSTALL 68 S.Y. TYPE "C" RIP RAP PER NCTCOG  
DRAINAGE EASEMENT  
UNDERGROUND TELEPHONE SIGN  
UNDERGROUND UTILITY SIGN  
FRESE AND NICHOLS, INC.  
4055 INTERMEDIAN BLVD. SUITE 200  
FORT WORTH, TEXAS 76103-4685  
RECORD DRAWINGS PREPARED ON:  
5/16/2009



EX. STATE HIGHWAY 205  
CHANNEL SECTION (TYP.)  
CHANNEL WIDTH=40.0'±  
SIDESLOPE 3:1  
D=3.0'  
BOTTOM WIDTH=20'

SCALE:  
HORIZ: 1" = 20'  
VERT 1" = 5'



CITY OF ROCKWALL, TEXAS  
205 BYPASS CONSTRUCTION  
CIVIL  
STORM SEWER PLAN AND PROFILE  
CULVERT B STATION 1+00-6+00

NO.	ISSUE	BY	DATE	DATE	DESIGNED	DRAWN	REVISION	FILE NAME
					KAS	KAS		CV-DNG-PP-STRM06.dwg
							5/12/09	
							CIP	
							RECORD DRAWINGS	
							Bar is one inch on original drawing. If not one inch on this sheet, adjust scale.	
							VERIFY SCALE	
							CHECKED	
							TBS	

SD-6  
32 OF 86