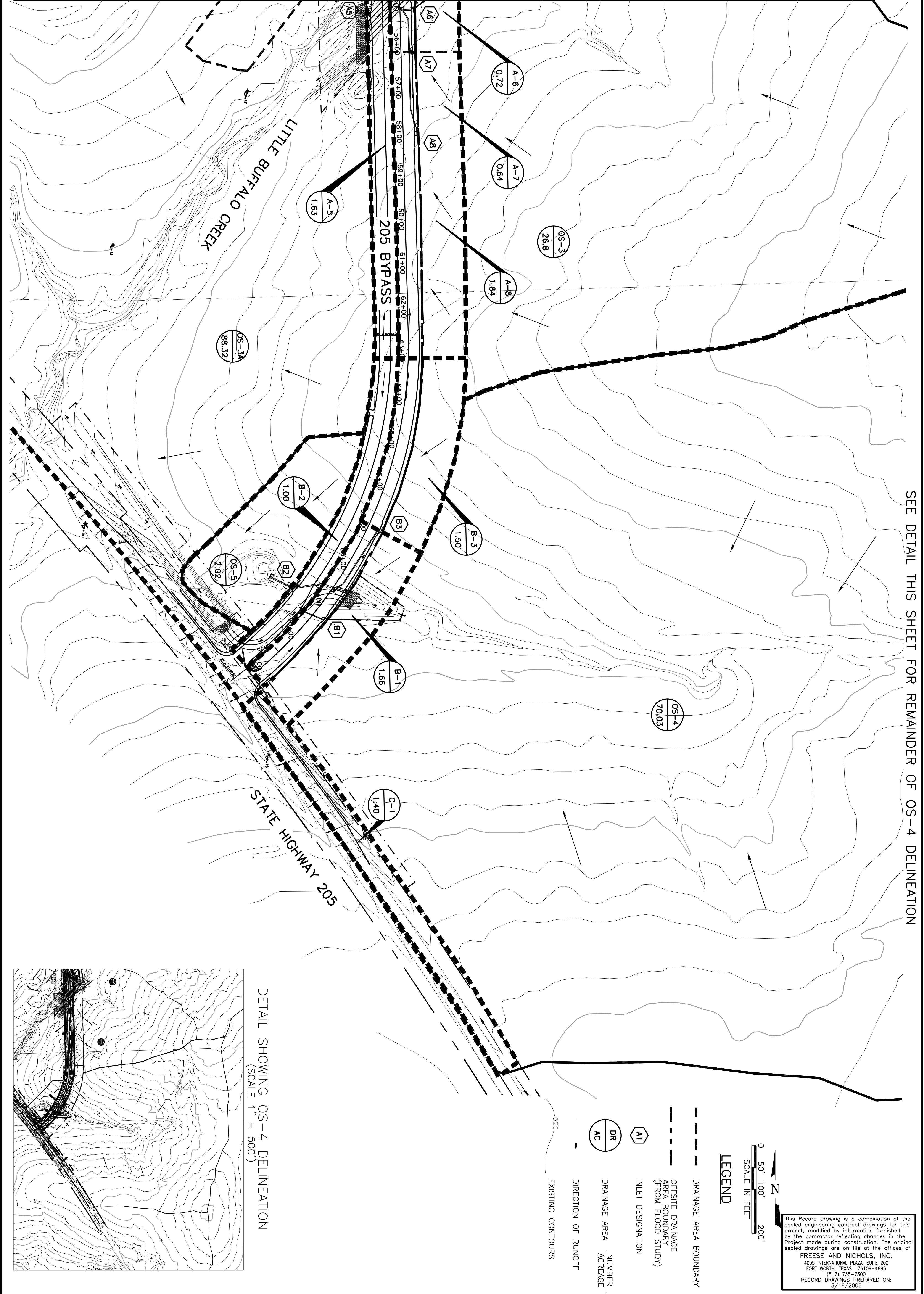
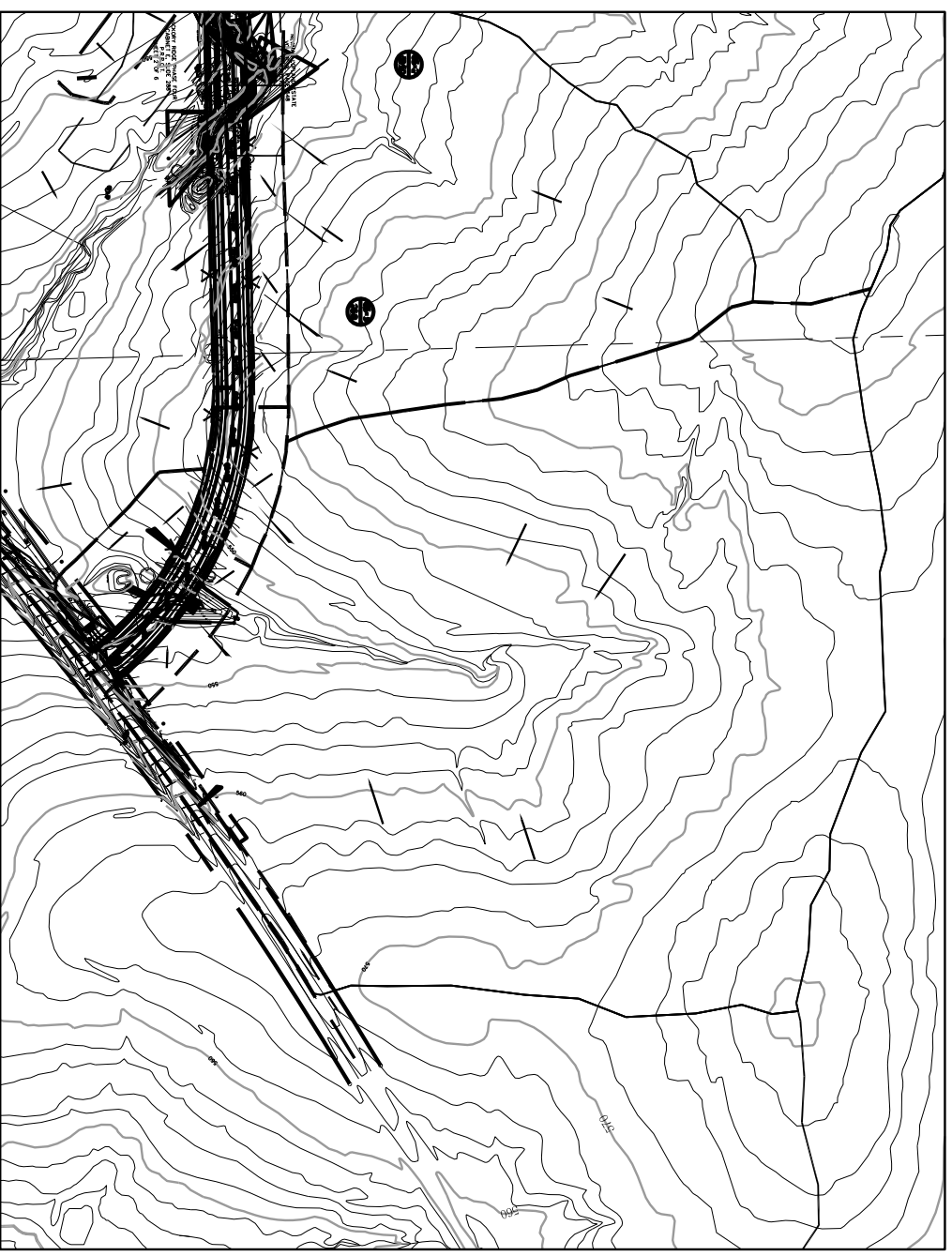


MATCHLINE STA 55+00
 SHEET DA-2



SEE DETAIL THIS SHEET FOR REMAINDER OF OS-4 DELINEATION



DETAIL SHOWING OS-4 DELINEATION
 (SCALE 1" = 500')

- DRAINAGE AREA BOUNDARY
- OFFSITE DRAINAGE AREA BOUNDARY (FROM FLOOD STUDY)
- INLET DESIGNATION
- DRAINAGE AREA NUMBER ACREAGE
- DIRECTION OF RUNOFF
- EXISTING CONTOURS

0 50' 100' 200'
 SCALE IN FEET

This Record Drawing is a combination of the sealed engineering contract drawings for this project, modified by information furnished by the contractor reflecting changes in the Project made during construction. The original sealed drawings are on file at the offices of
FREESE AND NICHOLS, INC.
 4055 INTERNATIONAL PLAZA, SUITE 200
 FORT WORTH, TEXAS 76109-4895
 (817) 735-7300
 RECORD DRAWINGS PREPARED ON:
 3/16/2009

SHEET DA-3	NO.	ISSUE	BY	DATE	F&N JOB NO.
	0	RECORD DRAWINGS	CJP	5/12/09	ROK06114
24 OF 86	DESIGNED	KAS	DATE	05/2007	
	DRAWN	CHM	DESIGNED		
	CHECKED		REVISED		
	FILE NAME	CV-ALL-PL-DRNG03.dwg			

CITY OF ROCKWALL, TEXAS
205 BYPASS CONSTRUCTION
 CIVIL
DRAINAGE AREA MAP

Freese and Nichols
 1701 N. Market Street, Suite 500, LB 51
 Dallas, Texas 75202-2001
 Phone - (214) 920-2500
 Fax - (214) 920-2565

THE SEAL THAT ORIGINALLY APPEARED ON THIS DOCUMENT WAS AUTHORIZED BY JERICA H. HATLEY P.E. ON 2/27/2009. ALTERATION OF A SEALED DOCUMENT WITHOUT PROPER NOTIFICATION OF THE RESPONSIBLE ENGINEER IS AN OFFENSE UNDER THE TEXAS ENGINEERING PRACTICE ACT.