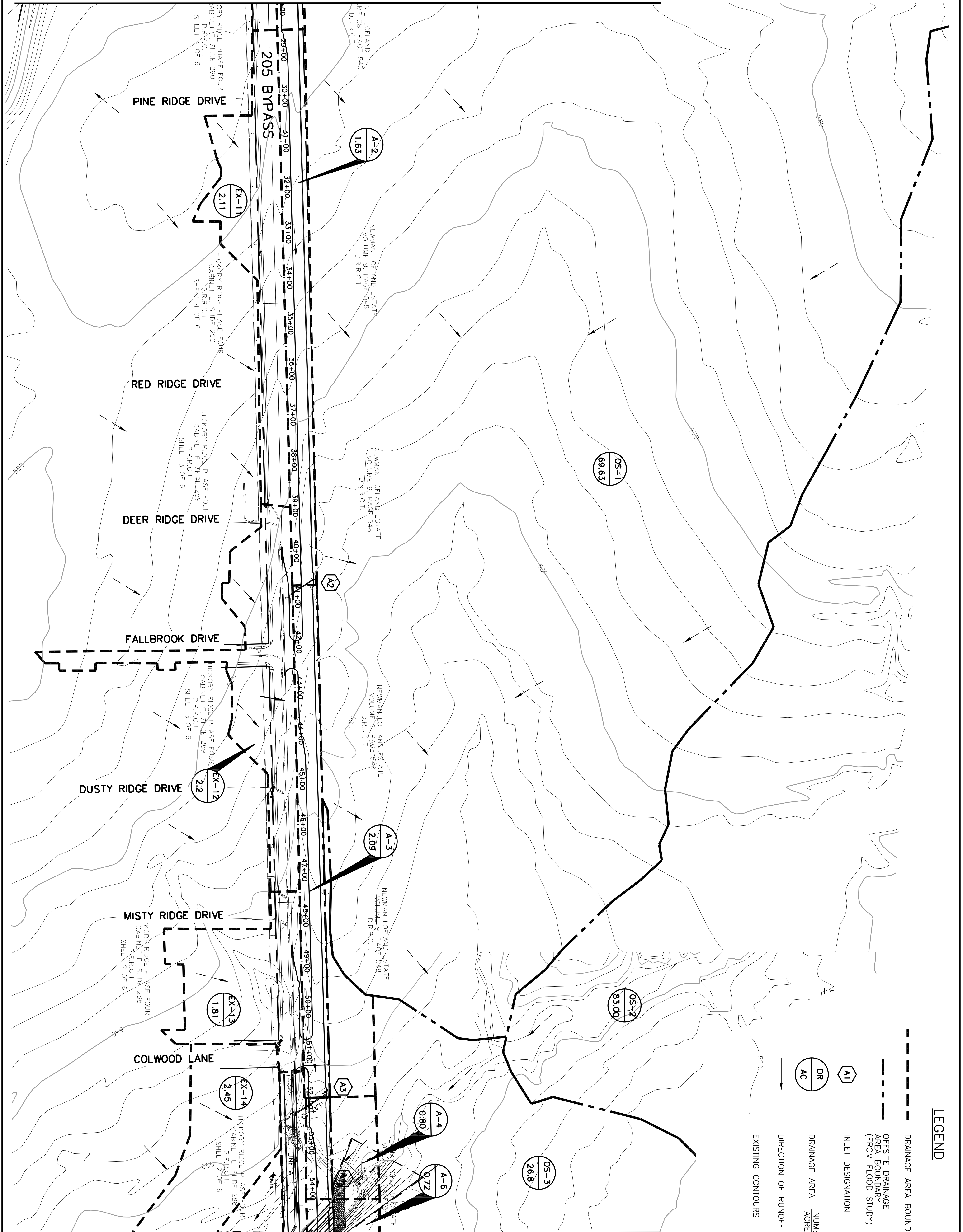


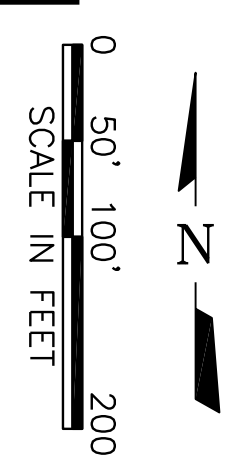
MATCHLINE STA 28+00



MATCHLINE STA 55+00
 SHEET DA-3

LEGEND

- DRAINAGE AREA BOUNDARY
- - - OFFSITE DRAINAGE AREA BOUNDARY (FROM FLOOD STUDY)
- ▲ INLET DESIGNATION
- DR AC DRAINAGE AREA NUMBER ACREAGE
- DIRECTION OF RUNOFF
- EXISTING CONTOURS



This Record Drawing is a combination of the sealed engineering contract drawings for this project, modified by information furnished by the contractor reflecting changes in the Project made during construction. The original sealed drawings are on file at the offices of
FREES AND NICHOLS, INC.
 4055 INTERNATIONAL PLAZA, SUITE 200
 FORT WORTH, TEXAS 76109-4895
 (817) 735-7300
 RECORD DRAWINGS PREPARED ON:
 3/16/2009

NO.	ISSUE	BY	DATE	F&N JOB NO.
1	RECORD DRAWINGS	CJP	5/12/09	ROK06114

VERIFY SCALE 1" = 100'

Bar is one inch on original drawing. If not one inch on this sheet, adjust scale.

CITY OF ROCKWALL, TEXAS
205 BYPASS CONSTRUCTION
 CIVIL

DESIGNED: KAS
 DRAWN: CHM
 REVISED:
 CHECKED: TBS

FILE NAME: CV-ALL-PL-DRNG02.dwg

Freese and Nichols
 1701 N. Market Street, Suite 500, LB 51
 Dallas, Texas 75202-2001
 Phone - (214) 920-2500
 Fax - (214) 920-2565

THE SEAL THAT ORIGINALLY APPEARED ON THIS DOCUMENT WAS AUTHORIZED BY ERICIA H. HATLEY P.E.
 TEXAS NO. 83282 ON 2/27/2009
 ALTERATION OF A SEALED DOCUMENT WITHOUT PROPER NOTIFICATION OF THE RESPONSIBLE ENGINEER IS AN OFFENSE UNDER THE TEXAS ENGINEERING PRACTICE ACT