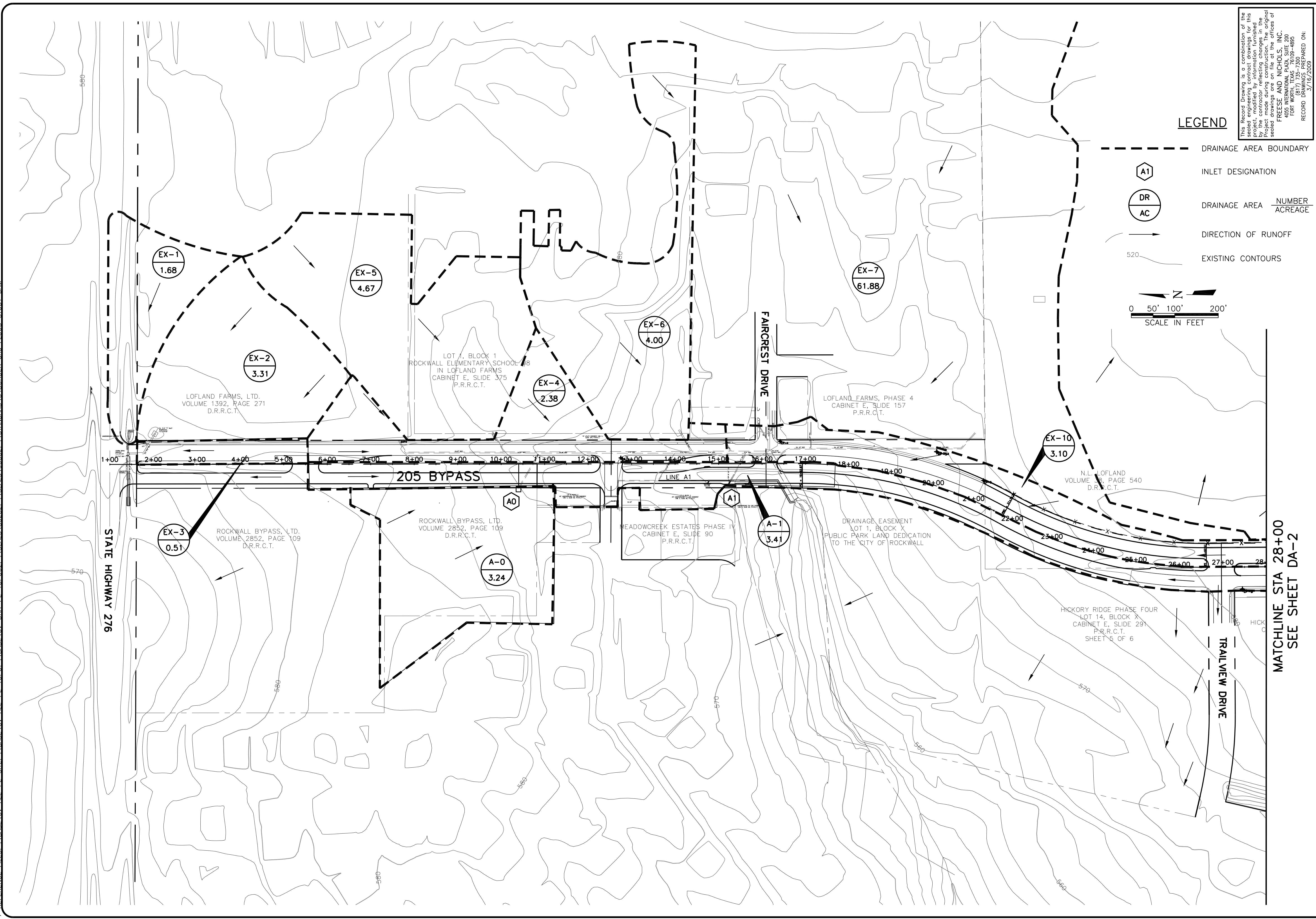
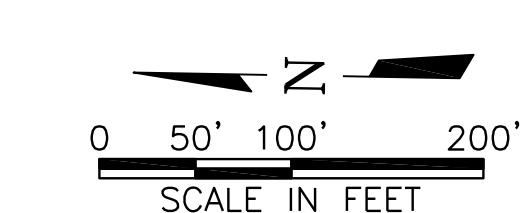


ACAD: Rel 17.2s (LMS Tech) User: AL  
 (R0K06114) [D:\SRV1\N\RECORD\CV-ALL-PL-DRNG01.DWG LAYOUT: Layout1  
 MAY 21, 2009 9:59:19 A.M. LTS: 1.00 PSLTS: 1  
 7 REFERENCE FILES: \BASE\CV-ALL-PL-SITE; \BASE\CV-ALL-PL-TOPO; \BASE\CV-DBA-PL-TOPO02; \SEALS\83282; \STANDARD\34BORDER\_and\_FLOOD\_STUDY\_DAM



**LEGEND**

- DRAINAGE AREA BOUNDARY
- INLET DESIGNATION
- DRAINAGE AREA NUMBER  
ACREAGE
- DIRECTION OF RUNOFF
- EXISTING CONTOURS



This Record Drawing is a combination of the sealed engineering contract drawings for this project, modified by information furnished by the contractor reflecting changes in the project. The contractor is responsible for the accuracy of the sealed drawings on file at the offices of  
**FRESE AND NICHOLS, INC.**  
 4055 INTERNATIONAL PLAZA, SUITE 200  
 FORT WORTH, TEXAS 76109-4895  
 RECORD DRAWINGS PREPARED ON:  
 3/15/2009

THIS SEAL WAS ORIGINALLY APPLIED TO THIS DOCUMENT AND IS AUTHORIZED BY SEALS, L.L.P. FOR THE PROJECT. ANY ALTERATION OF A SEAL DOCUMENT WITHOUT PROPER NOTIFICATION OF THE RESPONSIBLE ENGINEER OR ANOTHER AUTHORIZED PERSON IS PROHIBITED. PENALTY \$500 PER DAY.

**Freese and Nichols**  
 1701 N. Morse Street, Suite 500, LB 51  
 Fort Worth, Texas 76109  
 Phone - (214) 920-2500  
 Fax - (214) 920-2565

CITY OF ROCKWALL, TEXAS  
**205 BYPASS CONSTRUCTION**  
 CIVIL  
**DRAINAGE AREA MAP**

NO.	ISSUE	BY	DATE	PER. JOB NO.	ROK06114
1	RECORD DRAWINGS	CJP	5/12/09	DATE	05/2007
2	VERIFY SCALE			DESIGNED	KAS
3	Bar is one inch on original drawing if not one inch on this sheet, adjust scale.			DRAWN	CHM
				CHECKED	TBS
				FILE NAME	CV-ALL-PL-DRNG01.dwg

**MATCHLINE STA 28+00**  
**SEE SHEET DA-2**