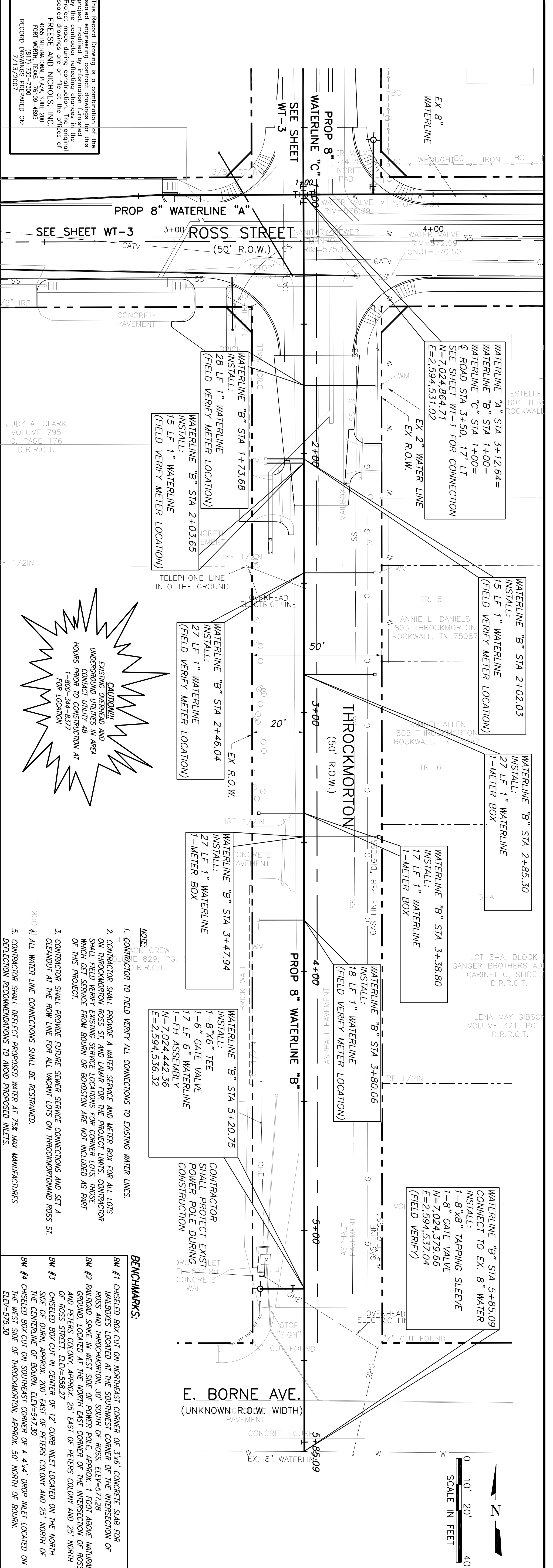
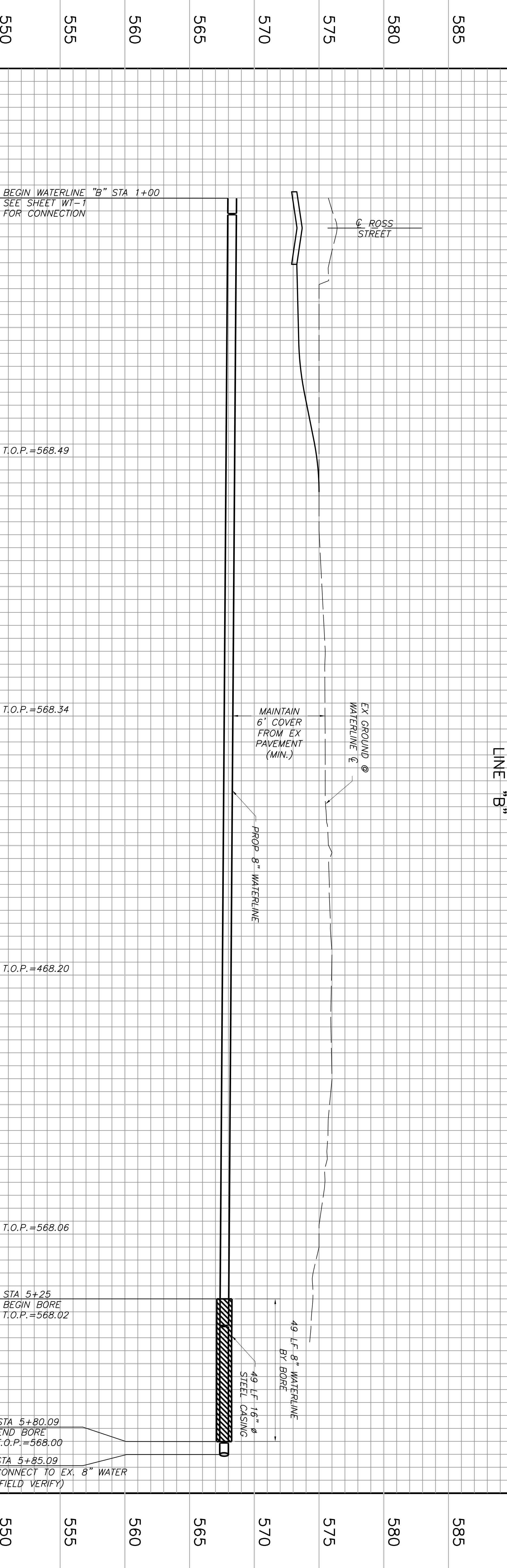


Date: Jul 16, 2007 - 4:17pm User: dtm File: N:\Record\CV-ROK-PP-WTRL02.dwg



This Record Drawing is a combination of the sealed engineering contract drawings for this project, modified by information furnished by the project engineer during construction. The original sealed drawings are on file at the offices of FRESSE AND NICHOLS, INC., 4055 INTERNATIONAL PLAZA, SUITE 200 FORT WORTH, TEXAS 76109-4895 RECORD DRAWINGS PREPARED ON: 7/13/2007

JUDY A. CLARK
 VOLUME 795
 C. PAGE 176
 D.R.R.C.T.

CAUTION!!!
 EXISTING OVERHEAD AND UNDERGROUND UTILITIES IN AREA CONTACT UTILITY 48 HOURS PRIOR TO CONSTRUCTION AT 1-800-344-8377 FOR LOCATION

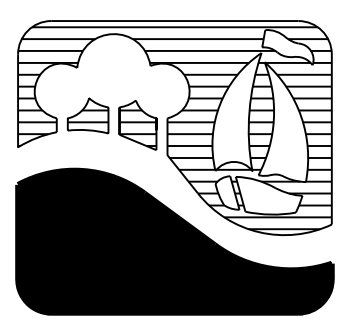
- NOTE:
- CONTRACTOR TO FIELD VERIFY ALL CONNECTIONS TO EXISTING WATER LINES.
 - CONTRACTOR SHALL PROVIDE A WATER SERVICE AND METER BOX FOR ALL LOTS ON THROCKMORTON ROSS ST. AND LAMAR FOR THE PROJECT LIMITS. CONTRACTOR SHALL FIELD VERIFY EXISTING SERVICE LOCATIONS FOR CORNER LOTS. THOSE WHICH GET SERVICE FROM BOURN OR BODDISON ARE NOT INCLUDED AS PART OF THIS PROJECT.
 - CONTRACTOR SHALL PROVIDE FUTURE SEWER SERVICE CONNECTIONS AND SET A CLEANOUT AT THE ROW LINE FOR ALL VACANT LOTS ON THROCKMORTON AND ROSS ST.
 - CONTRACTOR SHALL DETECT PROPOSED WATER AT 75% MAX. MANUFACTURERS DETECTION RECOMMENDATIONS TO AVOID PROPOSED INLETS.

- BENCHMARKS:**
- BM #1 CHISELED BOX CUT ON NORTHEAST CORNER OF 3.6' CONCRETE SLAB FOR MANHOLES LOCATED AT THE SOUTHWEST CORNER OF THE INTERSECTION OF ROSS AND THROCKMORTON, 50' SOUTH OF ROSS. ELEV=977.28
 - BM #2 RAILROAD SNAKE IN WEST SIDE OF POWER POLE, APPROX. 1 FOOT ABOVE NATURAL GROUND, LOCATED AT THE NORTH EAST CORNER OF THE INTERSECTION OF ROSS AND PETERS COLONY, APPROX. 25' EAST OF PETERS COLONY AND 25' NORTH OF ROSS STREET. ELEV=588.27
 - BM #3 CHISELED BOX CUT IN CENTER OF 12" CURB INLET LOCATED ON THE NORTH SIDE OF OURN, APPROX. 200' EAST OF PETERS COLONY AND 25' NORTH OF THE CENTERLINE OF BOURN. ELEV=547.50
 - BM #4 CHISELED BOX CUT ON SOUTHWEST CORNER OF A 4'x4' DROP INLET LOCATED ON THE WEST SIDE OF THROCKMORTON, APPROX. 50' NORTH OF BOURN. ELEV=575.30

THE SEAL THAT ORIGINALLY APPEARED ON THIS DOCUMENT WAS AUTHORIZED BY TED B. SIGGERS, TEXAS NO. 82275 ON 7/13/2007. ALTERATION OF A SEALED DOCUMENT WITHOUT PROPER NOTIFICATION OF THE RESPONSIBLE ENGINEER IS AN OFFENSE UNDER THE TEXAS ENGINEERING PRACTICE ACT.

Freese and Nichols
 1701 N. Market Street, Suite 500, LB 51
 Dallas, Texas 75202-2001
 Phone - (214) 920-2500
 Fax - (214) 920-2565

CITY OF ROCKWALL, TEXAS
ROSS STREET REHABILITATION AND DRAINAGE IMPROVEMENTS
 CIVIL
PROPOSED WATERLINE "B"
PLAN & PROFILE STA 1+00 TO END



NO.	ISSUE	BY	DATE	F&N JOB NO.
1	ISSUE	TBS	3/01/2006	ROK05274
2	DESIGNED	CLL		
3	DRAWN			
4	REVISED			
5	CHECKED			

FILE NAME: CV-ROK-PP-WTRL02.dwg

VERIFY SCALE: 1" = 40'

Bar is one inch on original drawing. If not one inch on this sheet, adjust scale.