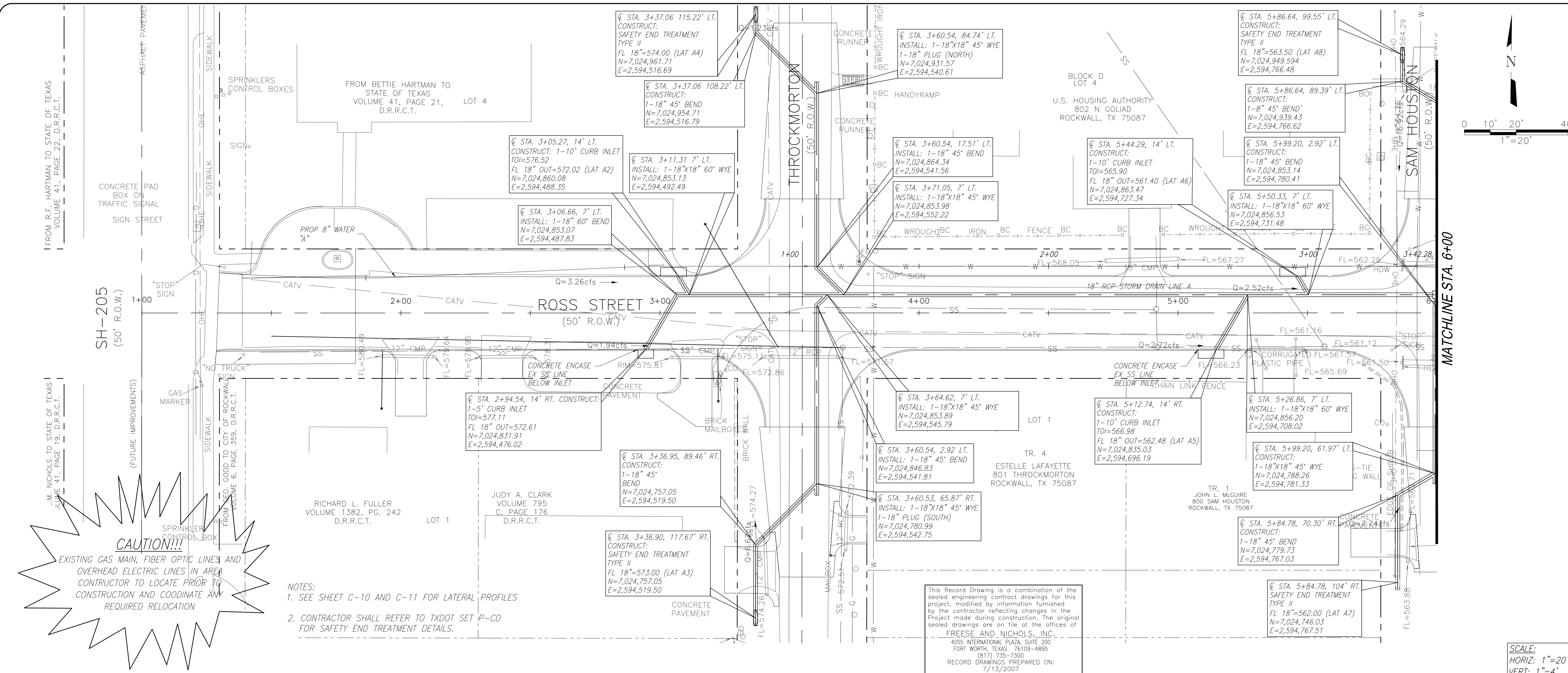


ACAD Rel 16.2s (LMS Tech) User: AAL
 ROK05274 [DALSRV2\N:\F\DRAWINGS\CV-ROK-PP-STDN01.DWG_LAYOUT: Layout1
 FEB 13, 2006 9:41:51 A.M. LTS: 1 PLS: 1
 4 REFERENCE FILES: N:\F\BASE\CV-ROK-PP-STDN01, N:\F\BASE\CV-ROK-PL-BASE, N:\F\BASE\CV-ROK-PL-TOPO and N:\STANDARD\34BORDER



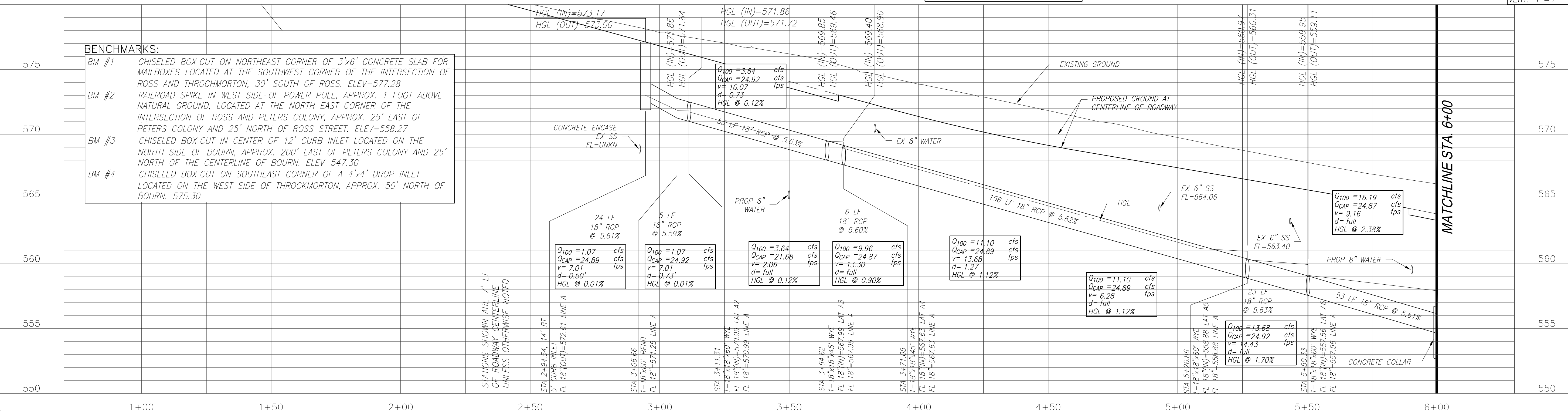
CAUTION!!!
 EXISTING GAS MAIN, FIBER OPTIC LINES AND OVERHEAD ELECTRIC LINES IN AREA CONSTRUCTOR TO LOCATE PRIOR TO CONSTRUCTION AND COORDINATE ANY REQUIRED RELOCATION

- NOTES:
 1. SEE SHEET C-10 AND C-11 FOR LATERAL PROFILES
 2. CONTRACTOR SHALL REFER TO TxDOT SET P-C/D FOR SAFETY END TREATMENT DETAILS.

This Record Drawing is a combination of the sealed engineering contract drawings for this project, modified by information furnished by the contractor reflecting changes in the Project made during construction. The original sealed drawings are on file at the offices of
FREES AND NICHOLS, INC.
 4055 INTERNATIONAL PLAZA, SUITE 200
 FORT WORTH, TEXAS 76109-4895
 (817) 735-7300
 RECORD DRAWINGS PREPARED ON:
 7/13/2007

BENCHMARKS:

BM #1	CHISELED BOX CUT ON NORTHEAST CORNER OF 3'x6' CONCRETE SLAB FOR MAILBOXES LOCATED AT THE SOUTHWEST CORNER OF THE INTERSECTION OF ROSS AND THROCKMORTON, 30' SOUTH OF ROSS. ELEV=577.28
BM #2	RAILROAD SPIKE IN WEST SIDE OF POWER POLE, APPROX. 1 FOOT ABOVE NATURAL GROUND, LOCATED AT THE NORTH EAST CORNER OF THE INTERSECTION OF ROSS AND PETERS COLONY, APPROX. 25' EAST OF PETERS COLONY AND 25' NORTH OF ROSS STREET. ELEV=558.27
BM #3	CHISELED BOX CUT IN CENTER OF 12' CURB INLET LOCATED ON THE NORTH SIDE OF BOURN, APPROX. 200' EAST OF PETERS COLONY AND 25' NORTH OF THE CENTERLINE OF BOURN. ELEV=547.30
BM #4	CHISELED BOX CUT ON SOUTHEAST CORNER OF A 4'x4' DROP INLET LOCATED ON THE WEST SIDE OF THROCKMORTON, APPROX. 50' NORTH OF BOURN. 575.30



SCALE:
 HORIZ: 1"=20'
 VERT: 1"=4'

Freeze and Nichols
 1701 N. Meeks Street, Suite 801, LB 51
 Dallas, Texas 75202-2001
 Phone - (214) 920-2500
 Fax - (214) 920-2565

CITY OF ROCKWALL, TEXAS
 ROSS STREET REHABILITATION
 AND DRAINAGE IMPROVEMENTS
 STA. 1+00 TO STA. 5+00

NO.	ISSUE	BY	DATE	FRAN JOB NO.	NO.	ISSUE	BY	DATE
0				ROK05274	0			
1				DATE 5/01/2006	1	DESIGNED	RAW	
					2	DRAWN	NO/EAH	
					3	REVISION	NO	
					4	CHECKED	RAW	

VERIFY SCALE: Bar is one inch on original drawing, if not one inch on this sheet, adjust scale.

C-7