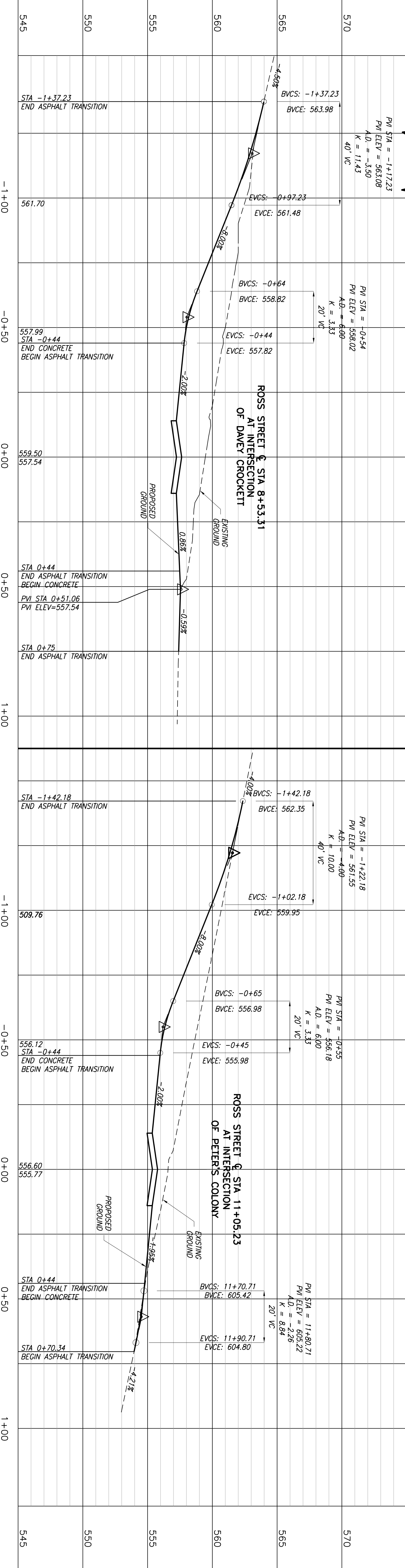


Date: Jul 16, 2007 - 4:12pm User: dlm File: N:\Record\CV-ROK-PP-ROAD06.dwg



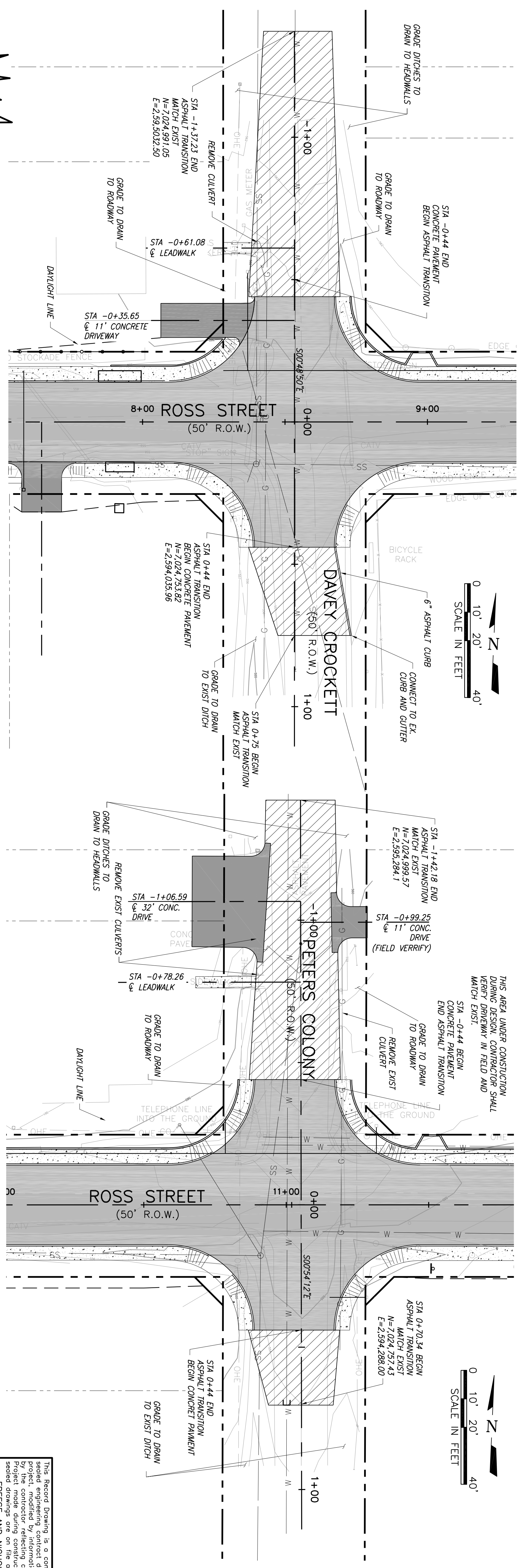
CAUTION!!!
 EXISTING GAS MAIN, FIBER OPTIC LINES AND OVERHEAD ELECTRIC LINES IN AREA CONSTRUCTOR TO LOCATE PRIOR TO CONSTRUCTION AND COORDINATE ANY REQUIRED RELOCATION

- LEGEND**
- 6" 3600 PSI CONCRETE ROADWAY PAVING W/6" LIME STABILIZED BASE
 - 6" 3600 PSI CONCRETE DRIVEWAY
 - 4" CONCRETE SIDEWALK
 - 4" ASPHALT TRANSITION PAVEMENT

BENCHMARKS:

- BM #1** CHISELED BOX CUT ON NORTHEAST CORNER OF 3'x6' CONCRETE SLAB FOR MAILBOXES LOCATED AT THE SOUTHWEST CORNER OF THE INTERSECTION OF ROSS AND THROCKMORTON, 30' SOUTH OF ROSS, ELEV=577.28
- BM #2** NATURAL GROUND, LOCATED AT THE NORTH EAST CORNER OF THE INTERSECTION OF ROSS AND PETERS COLONY, APPROX. 25' EAST OF PETERS COLONY AND 25' NORTH OF ROSS STREET. ELEV=558.27
- BM #3** CHISELED BOX CUT IN CENTER OF 12" CURB INLET LOCATED ON THE NORTH SIDE OF BOURN, APPROX. 200' EAST OF PETERS COLONY AND 25' NORTH OF THE CENTERLINE OF BOURN, ELEV=547.30
- BM #4** CHISELED BOX CUT ON SOUTHEAST CORNER OF A 4'x4' DROP INLET LOCATED ON THE WEST SIDE OF THROCKMORTON, APPROX. 50' NORTH OF BOURN, 575.30

SCALE:
 HORIZ: 1"=20'
 VERT: 1"=4'

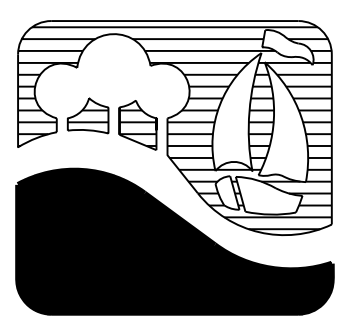


This Record Drawing is a combination of the selected engineering contract drawings for this project, modified by information furnished by the contractor during construction. The original set of drawings are on file at the offices of FREESE AND NICHOLS, INC., 4055 INTERNATIONAL PLAZA, SUITE 200 FORT WORTH, TEXAS 76109-4885 RECORD DRAWINGS PREPARED ON: 7/13/2007

NO.	ISSUE	BY	DATE	F&N JOB NO.
1	ISSUED FOR CONSTRUCTION		3/01/2006	ROK05274

DESIGNED: RAW
 DRAWN: NO/EAM
 REVISED: NO
 CHECKED: RAW

FILE NAME: CV-ROK-PP-ROAD06.dwg



CITY OF ROCKWALL, TEXAS
ROSS STREET REHABILITATION AND DRAINAGE IMPROVEMENTS
PLAN AND PROFILE INTERSECTIONS

Freese and Nichols
 1701 N. Market Street, Suite 500, LB 51
 Dallas, Texas 75202-2001
 Phone - (214) 920-2500
 Fax - (214) 920-2565

THE SEAL THAT ORIGINALLY APPEARED ON THIS DOCUMENT WAS AUTHORIZED BY TED B. SISK, P.E. TEXAS NO. 82275 ON 7/13/2007. ALTERATION OF A SEALED DOCUMENT WITHOUT PROPER NOTIFICATION OF THE RESPONSIBLE ENGINEER IS AN OFFENSE UNDER THE TEXAS ENGINEERING PRACTICE ACT.

VERIFY SCALE: Bar is one inch on original drawing. If not one inch on this sheet, adjust scale.