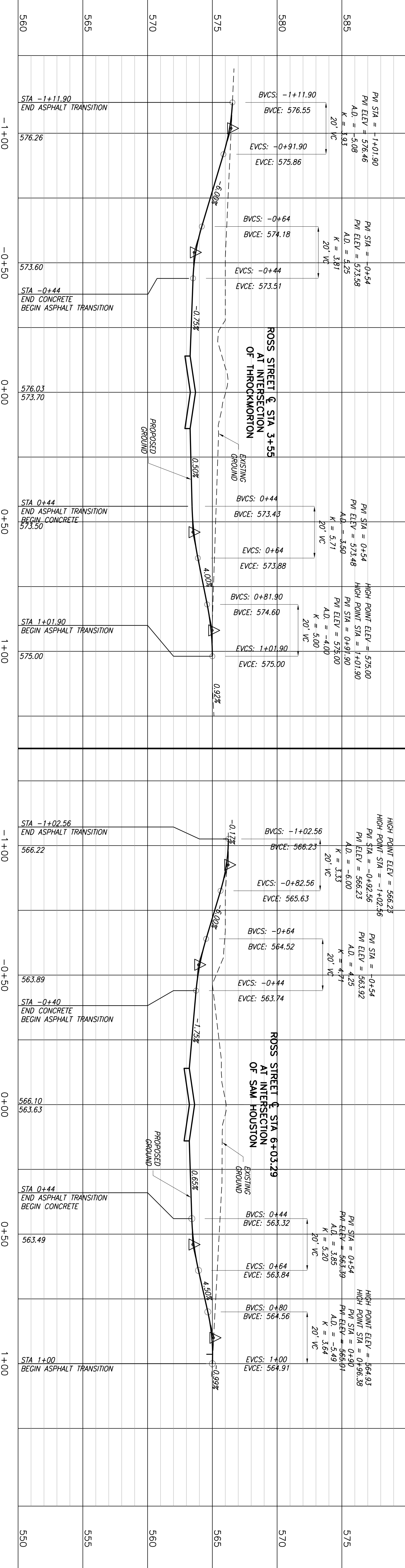


Date: Jul 16, 2007 - 4:11pm User: dlm File: N:\Record\CV-ROK-PP-ROAD05.dwg

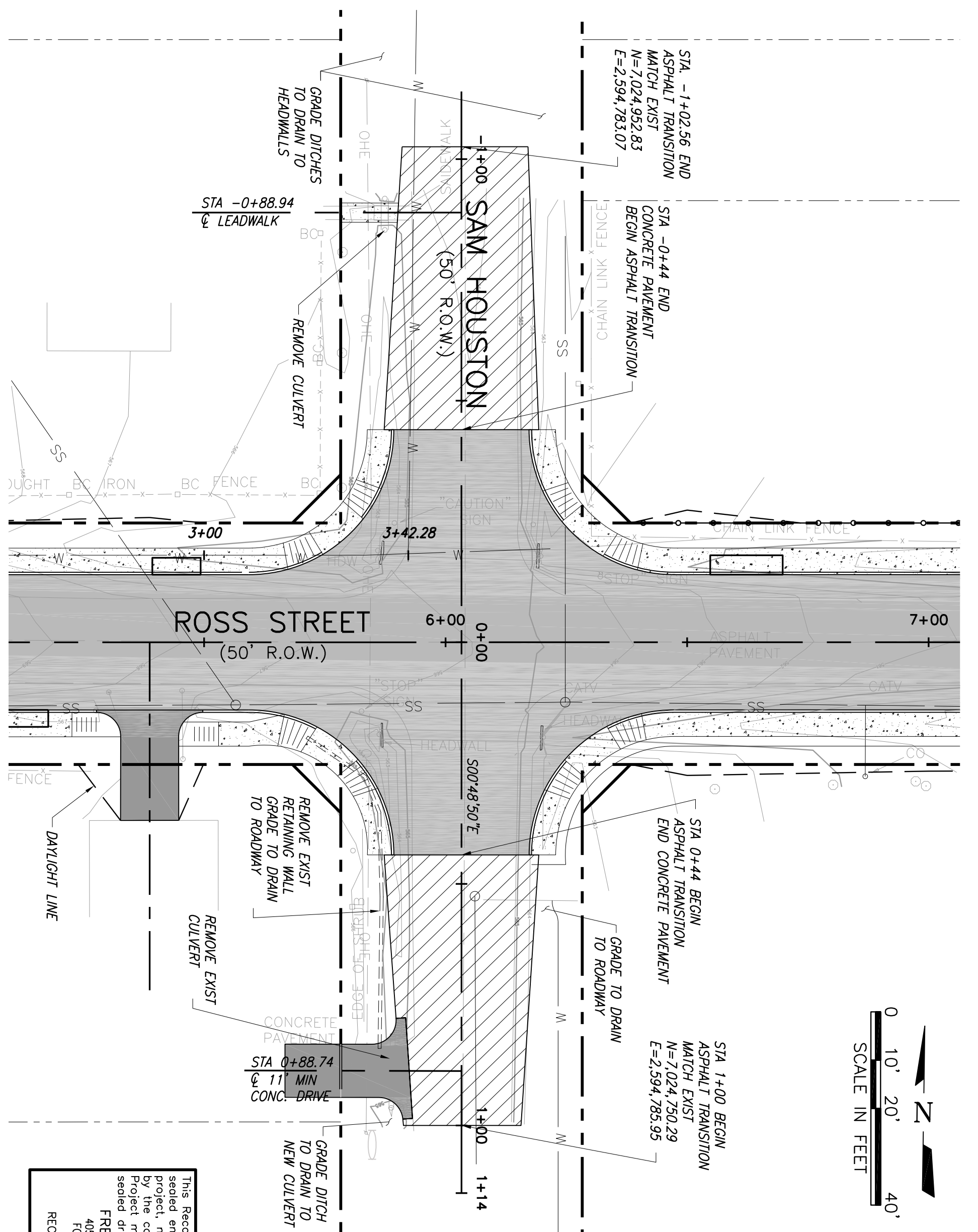
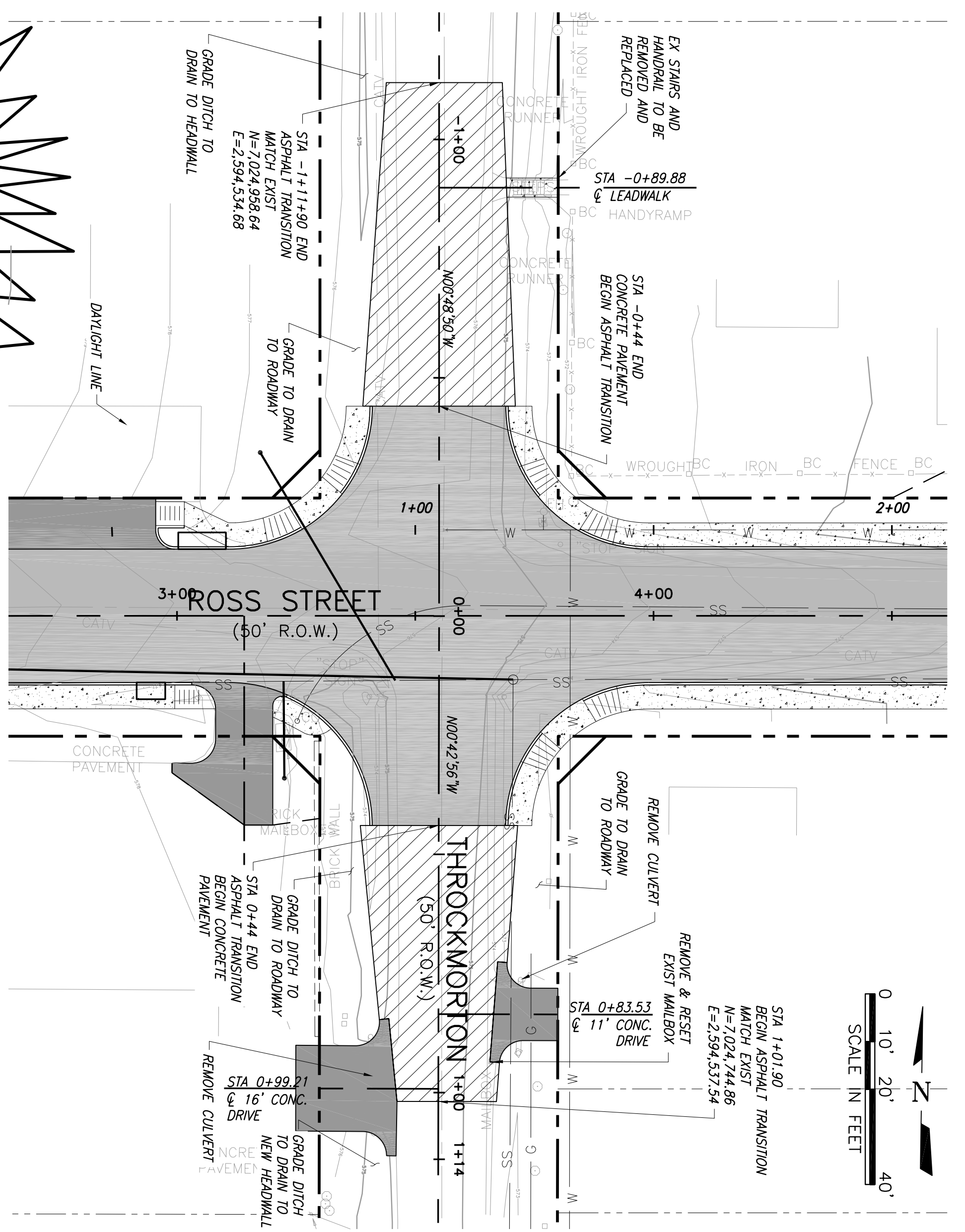


CAUTION!!!
 EXIST GAS MAIN, FIBER OPTIC LINES AND OVERHEAD ELECTRIC LINES IN AREA CONSTRUCTOR TO LOCATE PRIOR TO CONSTRUCTION AND COORDINATE ANY REQUIRED RELOCATION

- LEGEND**
- 6" 3600 PSI CONCRETE ROADWAY PAVING W/6" LIME STABILIZED BASE
 - 6" 3600 PSI CONCRETE DRIVEWAY
 - 4" CONCRETE SIDEWALK
 - 4" ASPHALT TRANSITION PAVEMENT

- BENCHMARKS:**
- BM #1 CHISELED BOX CUT ON NORTHEAST CORNER OF 3'x6' CONCRETE SLAB FOR MAILBOXES LOCATED AT THE SOUTHWEST CORNER OF THE INTERSECTION OF ROSS AND THROCKMORTON, 30' SOUTH OF ROSS. ELEV=577.28
 - BM #2 CHISELED BOX CUT ON WEST SIDE OF POWER POLE, APPROX. 1 FOOT ABOVE NATURAL GROUND, LOCATED AT THE NORTH EAST CORNER OF THE INTERSECTION OF ROSS AND PETERS COLONY, APPROX. 25' EAST OF PETERS COLONY AND 25' NORTH OF ROSS STREET. ELEV=558.27
 - BM #3 CHISELED BOX CUT IN CENTER OF 12" CURB INLET LOCATED ON THE NORTH SIDE OF BOURN, APPROX. 200' EAST OF PETERS COLONY AND 25' NORTH OF THE CENTERLINE OF BOURN. ELEV=547.30
 - BM #4 CHISELED BOX CUT ON SOUTHEAST CORNER OF A 4'x4' DROP INLET LOCATED ON THE WEST SIDE OF THROCKMORTON, APPROX. 50' NORTH OF BOURN. 575.30

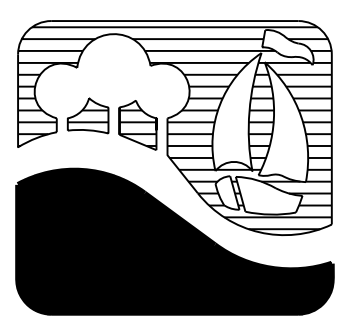
SCALE:
 HORIZ: 1"=20'
 VERT: 1"=4'



This Record Drawing is a combination of the original drawings and information furnished by the contractor, reflecting changes in the project made during construction. The original design was prepared by the offices of FRESSE AND NICHOLS, INC., 485 INTERNATIONAL PARK, SUITE 200, FORT WORTH, TEXAS 76109-4855. RECORD DRAWINGS PREPARED ON: 7/15/2007

| NO. | ISSUE | BY | DATE | F&N JOB NO. |
|-----|-------------------------|--------|-----------|-------------|
| 1 | ISSUED FOR CONSTRUCTION | | 3/01/2006 | R0K05274 |
| 2 | DESIGNED | RAW | | |
| 3 | DRAWN | NO/EAM | | |
| 4 | REVISED | NO | | |
| 5 | CHECKED | RAW | | |

FILE NAME: CV-ROK-PP-ROAD05.dwg



CITY OF ROCKWALL, TEXAS
ROSS STREET REHABILITATION AND DRAINAGE IMPROVEMENTS
PLAN AND PROFILE INTERSECTIONS

Freese and Nichols
 1701 N. Market Street, Suite 500, LB 51
 Dallas, Texas 75202-2001
 Phone - (214) 920-2500
 Fax - (214) 920-2565

THE SEAL THAT ORIGINALLY APPEARED ON THIS DOCUMENT WAS AUTHORIZED BY TED B. SUGGS, P.E. TEXAS NO. 82725 ON 7/13/2007. ALTERATION OF A SEALED DOCUMENT WITHOUT PROPER NOTIFICATION OF THE RESPONSIBLE ENGINEER IS AN OFFENSE UNDER THE TEXAS ENGINEERING PRACTICE ACT.

VERIFY SCALE: Bar is one inch on original drawing. If not one inch on this sheet, adjust scale.