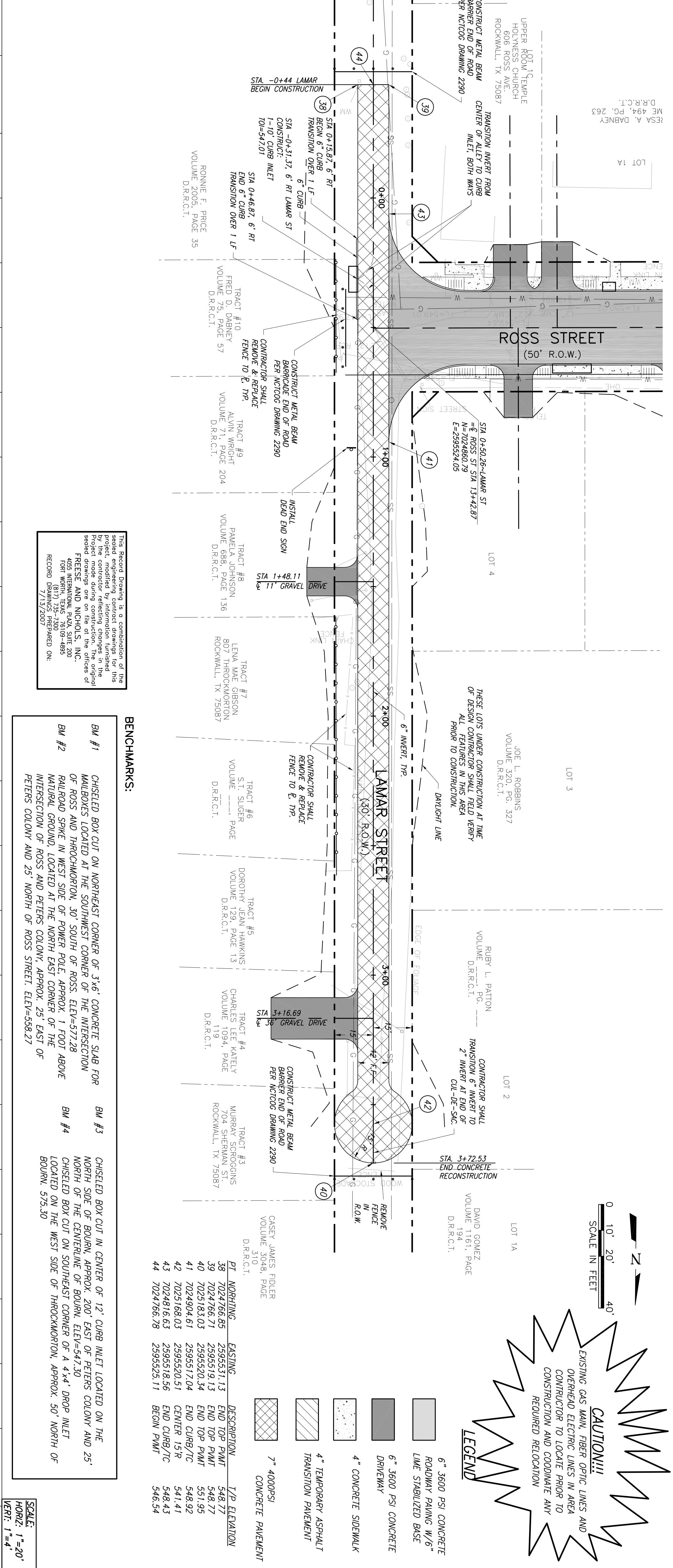
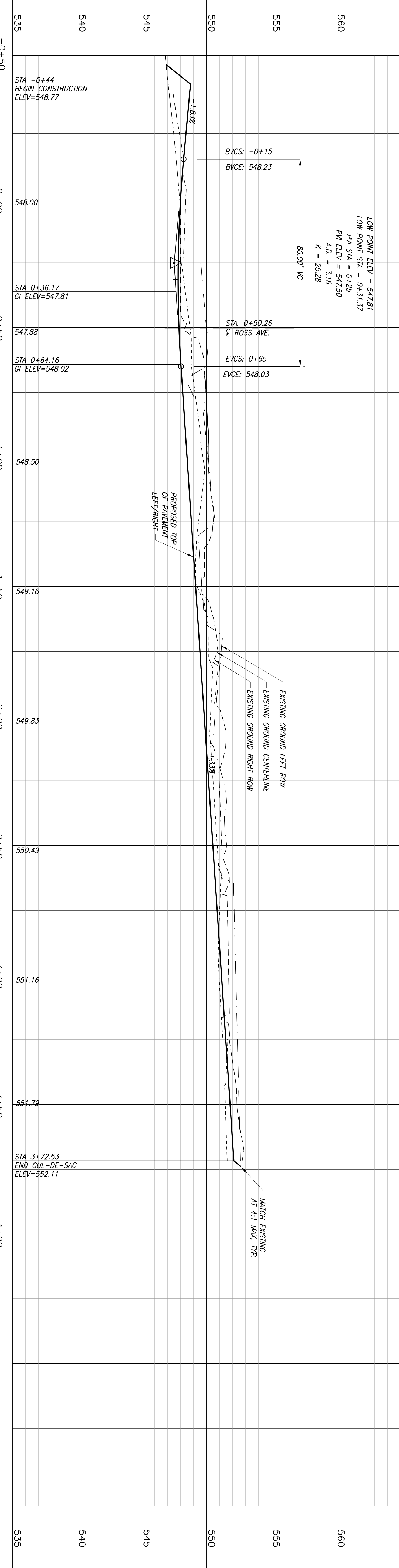


Date: Jul 16, 2007 - 4:10pm User: dlm File: N:\Record\CV-ROK-PP-ROAD04.dwg



This Record Drawing is a combination of the original drawings and information furnished by the contractor, reflecting changes in the project made during construction. The original design was prepared by the offices of FRESSE AND NICHOLS, INC., 4855 INTERNATIONAL PARK, SUITE 200, FORT WORTH, TEXAS 76109-4855. RECORD DRAWINGS PREPARED ON: 7/15/2006

**BENCHMARKS:**

BM #1 CHISELED BOX CUT ON NORTHEAST CORNER OF 3'x6' CONCRETE SLAB FOR MAILBOXES LOCATED AT THE SOUTHWEST CORNER OF THE INTERSECTION OF ROSS AND THROCKMORTON, 30' SOUTH OF ROSS. ELEV=577.28

BM #2 NATURAL GROUND, LOCATED AT THE NORTH EAST CORNER OF THE INTERSECTION OF ROSS AND PETERS COLONY, APPROX. 25' EAST OF PETERS COLONY AND 25' NORTH OF ROSS STREET. ELEV=558.27

BM #3 CHISELED BOX CUT IN CENTER OF 12' CURB INLET LOCATED ON THE NORTH SIDE OF BOURN, APPROX. 200' EAST OF PETERS COLONY AND 25' NORTH OF THE CENTERLINE OF BOURN. ELEV=547.30

BM #4 CHISELED BOX CUT ON SOUTHEAST CORNER OF A 4'x4' DROP INLET LOCATED ON THE WEST SIDE OF THROCKMORTON, APPROX. 50' NORTH OF BOURN. 575.30

SCALE:  
 HORIZ: 1"=20'  
 VERT: 1"=4'

PT. NUMBER	EASTING	DESCRIPTION	TYP. ELEVATION
38	702476.95	END TOP PAVT	548.77
39	702476.71	END TOP PAVT	548.77
40	7025183.03	END TOP PAVT	551.95
41	7024904.61	END CURB/T/C	548.92
42	7025168.03	CENTER 15'R	541.41
43	7024816.53	END CURB/T/C	548.43
44	702476.78	BEGIN PAVT	546.54

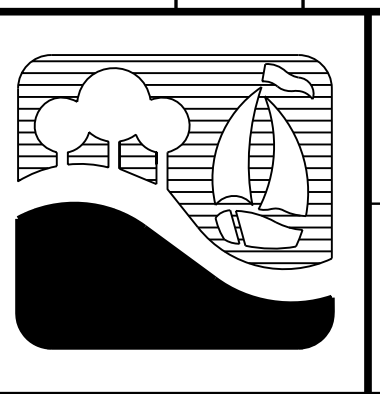
**CAUTION!!!**  
 EXISTING GAS MAIN, FIBER OPTIC LINES AND OVERHEAD ELECTRIC LINES IN AREA. CONTRACTOR TO LOCATE PRIOR TO CONSTRUCTION AND COORDINATE ANY REQUIRED RELOCATION.

**LEGEND**

- 6" 3600 PSI CONCRETE ROADWAY PAVING W/6" LIME STABILIZED BASE
- 6" 3600 PSI CONCRETE DRIVEWAY
- 4" CONCRETE SIDEWALK
- 4" TEMPORARY ASPHALT TRANSITION PAVEMENT
- 7" 4000PSI CONCRETE PAVEMENT

NO.	ISSUE	BY	DATE	F&N JOB NO.
0				ROK05274
1			3/01/2006	DATE
				DESIGNED
				DRAWN
				REVISED
				CHECKED
				FILE NAME
				CV-ROK-PP-ROAD04.dwg

VERIFY SCALE: Bar is one inch on original drawing. If not one inch on this sheet, adjust scale.



CITY OF ROCKWALL, TEXAS  
**ROSS STREET REHABILITATION AND DRAINAGE IMPROVEMENTS**  
**LAMAR STREET**  
 STA. -0+015.04 TO END

**Freese and Nichols**  
 1701 N. Market Street, Suite 500, LB 51  
 Dallas, Texas 75202-2001  
 Phone - (214) 920-2500  
 Fax - (214) 920-2565

THE SEAL THAT ORIGINALLY APPEARED ON THIS DOCUMENT WAS AUTHORIZED BY T.E.D. & SUGIE P. TEXAS NO. 82275 ON 7/13/2007. ALTERATION OF A SEALED DOCUMENT WITHOUT PROPER NOTIFICATION OF THE RESPONSIBLE ENGINEER IS AN OFFENSE UNDER THE TEXAS ENGINEERING PRACTICE ACT.