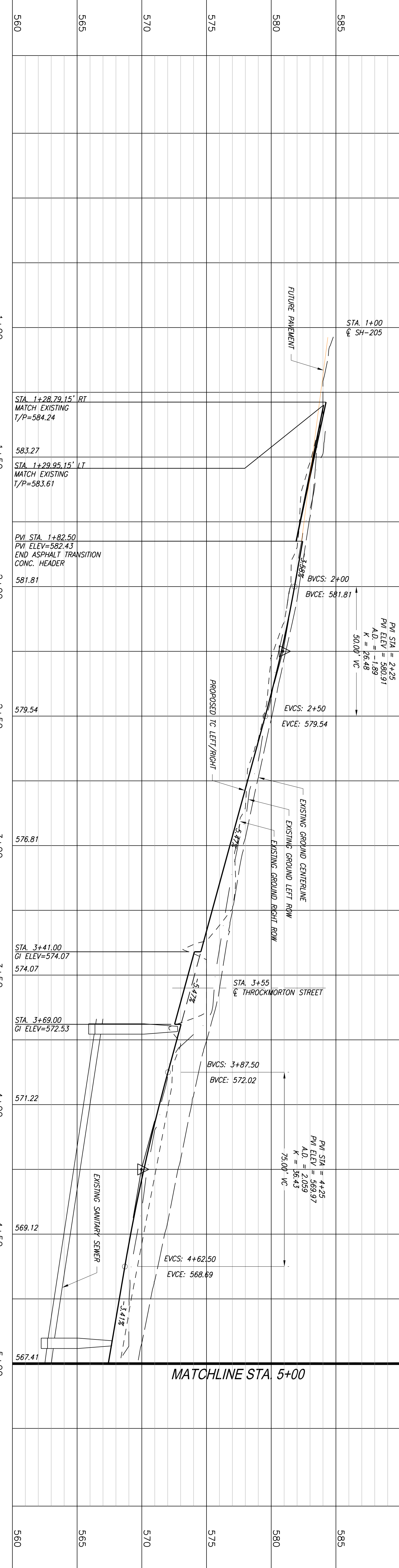


Date: Jul 16, 2007 - 4:03pm User: dlm File: N:\Record\CV-ROK-PP-ROAD01.dwg

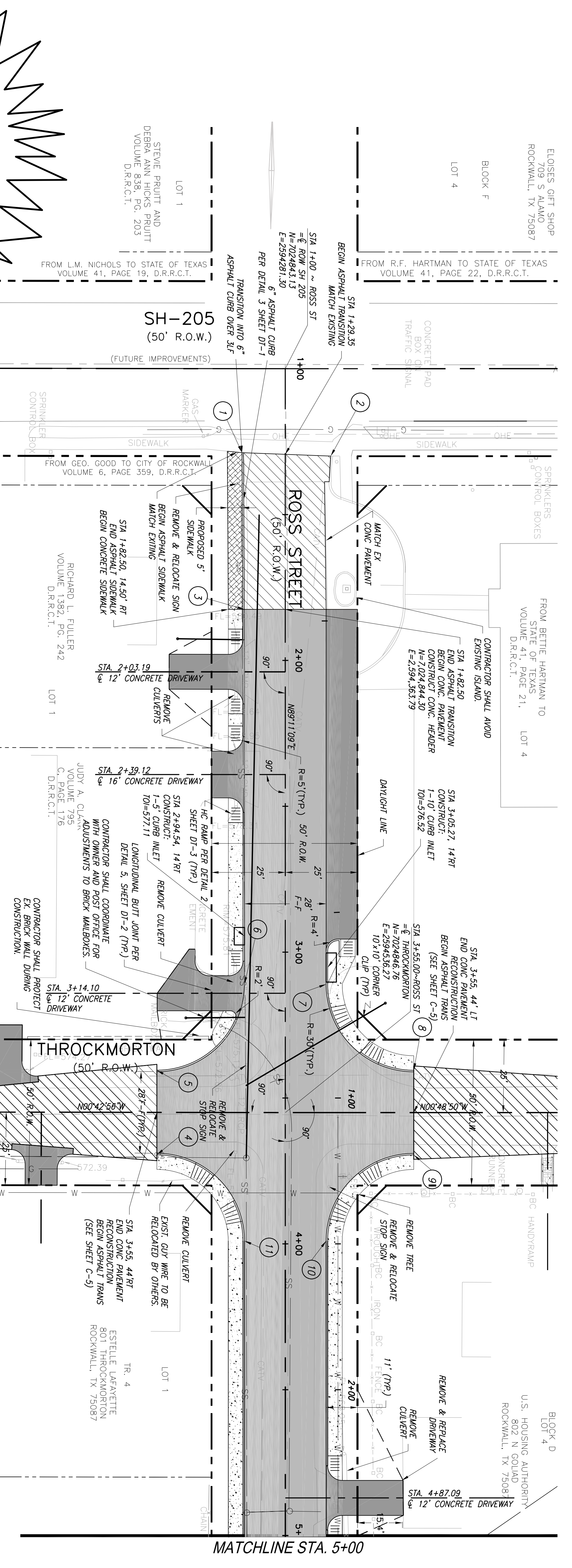


**CAUTION!!!**  
 EXISTING GAS MAIN, FIBER OPTIC LINES AND OVERHEAD ELECTRIC LINES IN AREA. CONTRACTOR TO LOCATE PRIOR TO CONSTRUCTION AND COORDINATE ANY REQUIRED RELOCATION.

**NOTE:**  
 1. CONTRACTOR TO REMOVE FIRE HYDRANTS & VALVE BOXES AND CAP WATERLINE ONLY AFTER NEW WATERLINE AND FIRE HYDRANTS ARE IN SERVICE.  
 2. ALL DIMENSIONS ARE TO FACE OF CURB, UNLESS OTHERWISE NOTED. TYP ALL SHEETS.  
 3. SEE WT-2 AND WT-3 FOR MILL AND OVERLAY NOTE FOR THROCKMORTON ST.

PT	NORTHING	EASTING	DESCRIPTION	T/C ELEVATION
1	7024828.72	2594310.29	TC/TIE-IN RT	584.24
2	7024859.14	2594311.02	TC/TIE-IN LT	583.61
3	7024830.31	2594353.98	BEGIN CURB/TC	582.43
4	7024803.02	2594551.36	END CURB/TC	573.25
5	7024802.55	2594522.36	END CURB/TC	574.80
6	7024832.13	2594492.44	30' P/T/TC/FC	576.21
7	7024860.13	2594492.08	30' P/T/TC/FC	576.21
8	7024890.55	2594521.15	END CURB/TC	574.72
9	7024890.96	2594550.14	END CURB/TC	573.18
10	7024861.38	2594580.07	30' P/T/TC/FC	571.41
11	7024833.38	2594580.43	30' P/T/TC/FC	571.41

**BENCHMARKS:**  
 BM #1 CHISELED BOX CUT ON NORTHEAST CORNER OF 3'x6" CONCRETE SLAB FOR MAILBOXES LOCATED AT THE SOUTHWEST CORNER OF THE INTERSECTION OF ROSS AND THROCKMORTON, 30' SOUTH OF ROSS. ELEV=572.28  
 BM #2 NATURAL GROUND LOCATED AT THE NORTH EAST CORNER OF THE INTERSECTION OF ROSS AND PETERS COLONY, APPROX. 25' EAST OF PETERS COLONY AND 25' NORTH OF ROSS STREET. ELEV=558.27  
 BM #3 CHISELED BOX CUT IN CENTER OF 12" CURB INLET LOCATED ON THE NORTH SIDE OF BOURN, APPROX. 200' EAST OF PETERS COLONY AND 25' NORTH OF THE CENTERLINE OF BOURN. ELEV=547.30  
 BM #4 CHISELED BOX CUT ON SOUTHWEST CORNER OF A 4'x4' DROP INLET LOCATED ON THE WEST SIDE OF THROCKMORTON, APPROX. 50' NORTH OF BOURN. 575.30



**LEGEND**

- 6" 3600 PSI CONCRETE ROADWAY PAVING W/6" LIME STABILIZED BASE
- 6" 3600 PSI CONCRETE DRIVEWAY
- 4" CONCRETE SIDEWALK
- 4" ASPHALT TRANSITION PAVEMENT

**SCALE:**  
 HORIZ: 1"=20'  
 VERT: 1"=4'

**SCALE IN FEET**  
 0 10' 20' 40'

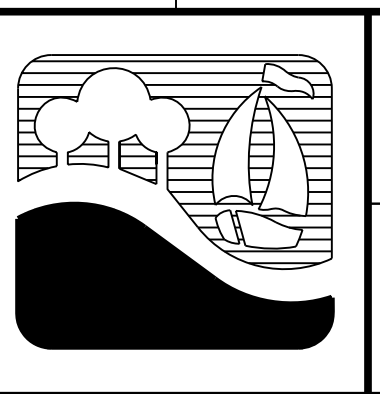
**LEGEND**

This Record Drawing is a combination of the sealed engineering contract drawings for this project and the contractor's field changes in the project made during construction. The original sealed drawings are on file at the offices of FRESSE AND NICHOLS, INC., 4055 INTERNATIONAL PLYWOOD SITE 200, FORT WORTH, TEXAS 76109-4659. FOR MORE INFORMATION, CONTACT: (817) 725-1200 (9:00 AM - 4:00 PM) RECORD DRAWINGS PREPARED ON: 7/13/2007

NO.	ISSUE	BY	DATE	F&N JOB NO.
1	ISSUED FOR CONSTRUCTION		3/01/2006	ROK05274
2	DESIGNED	RAW		
3	DRAWN	NO/EAM		
4	REVISED	NO		
5	CHECKED	RAW		

VERIFY SCALE 1 Bar is one inch on original drawing. If not one inch on this sheet, adjust scale.

FILE NAME: CV-ROK-PP-ROAD01.dwg



CITY OF ROCKWALL, TEXAS  
**ROSS STREET REHABILITATION AND DRAINAGE IMPROVEMENTS**  
 ROSS STREET  
 STA. 1+00 TO STA. 5+00

**Fresse and Nichols**  
 1701 N. Market Street, Suite 500, LB 51  
 Dallas, Texas 75202-2001  
 Phone - (214) 920-2500  
 Fax - (214) 920-2565

THE SEAL THAT ORIGINALLY APPEARED ON THIS DOCUMENT WAS AUTHORIZED BY TED B. SUGGS, P.E. TEXAS NO. 82275 ON 7/13/2007. ALTERATION OF A SEALED DOCUMENT WITHOUT PROPER NOTIFICATION OF THE RESPONSIBLE ENGINEER IS AN OFFENSE UNDER THE TEXAS ENGINEERING PRACTICE ACT.