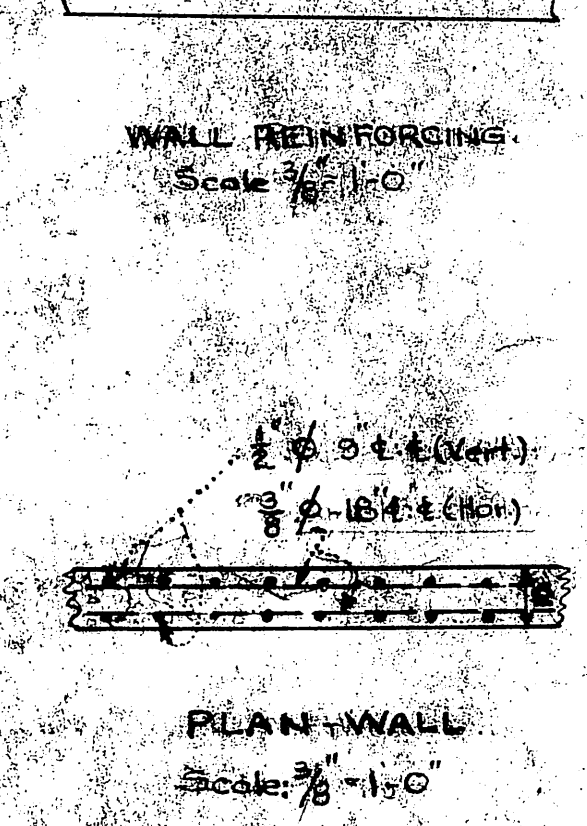
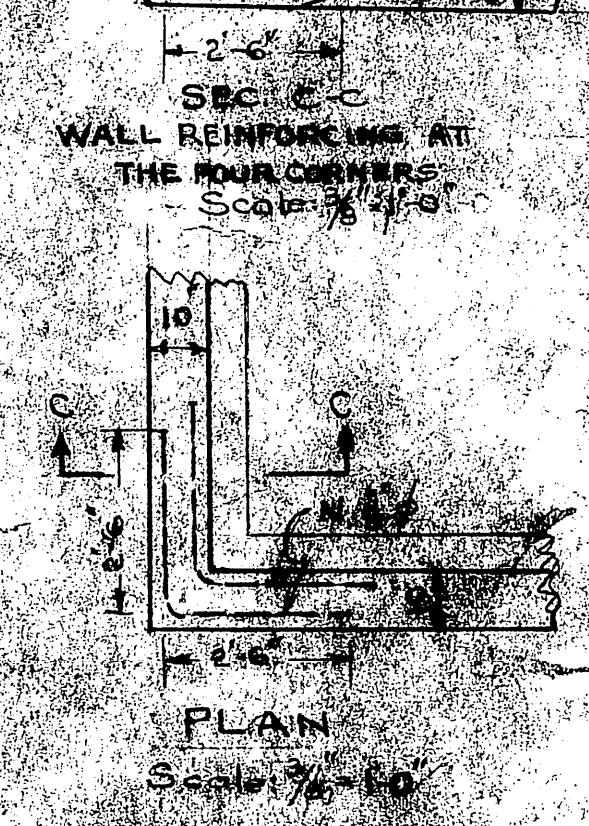
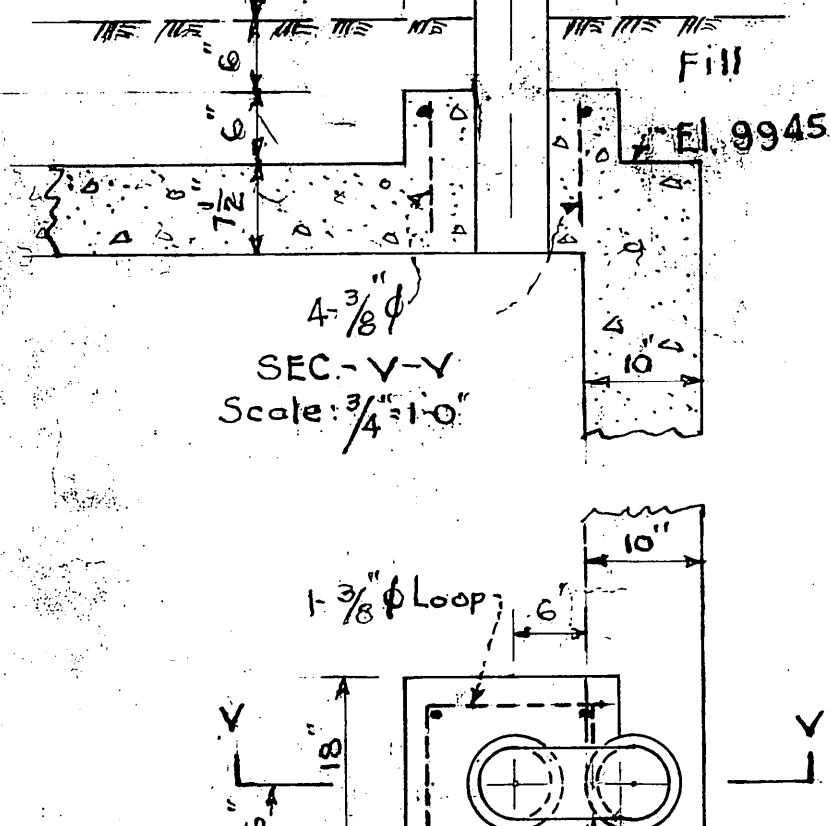
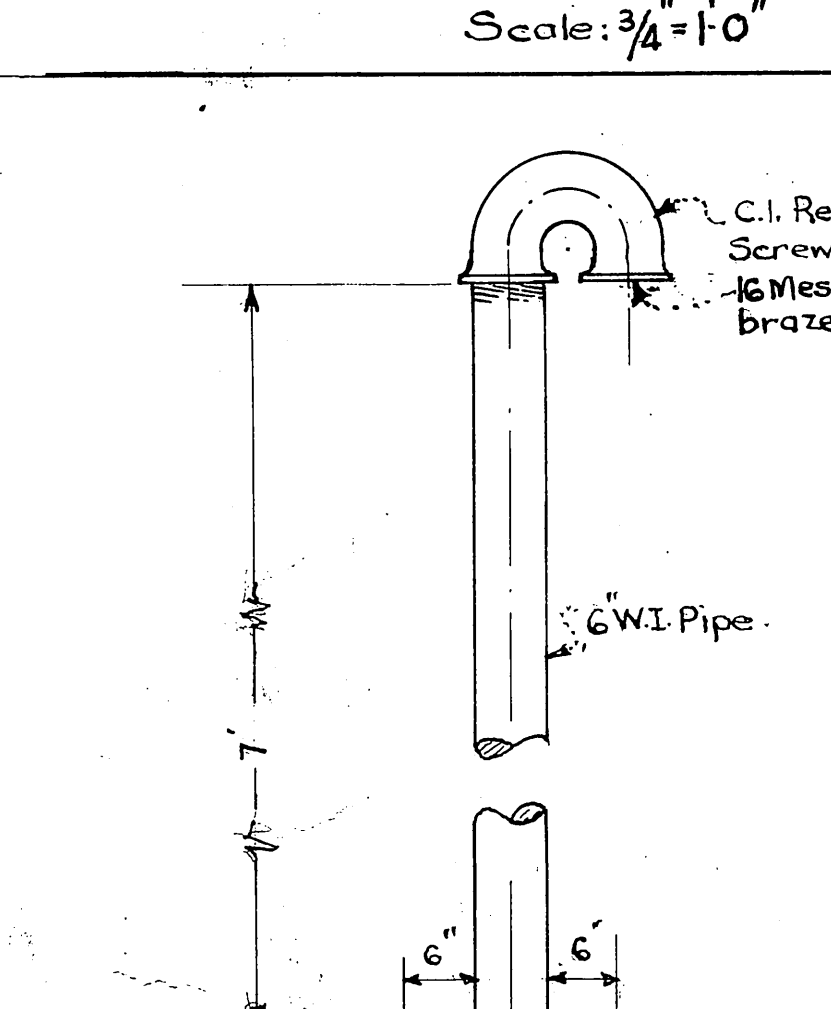
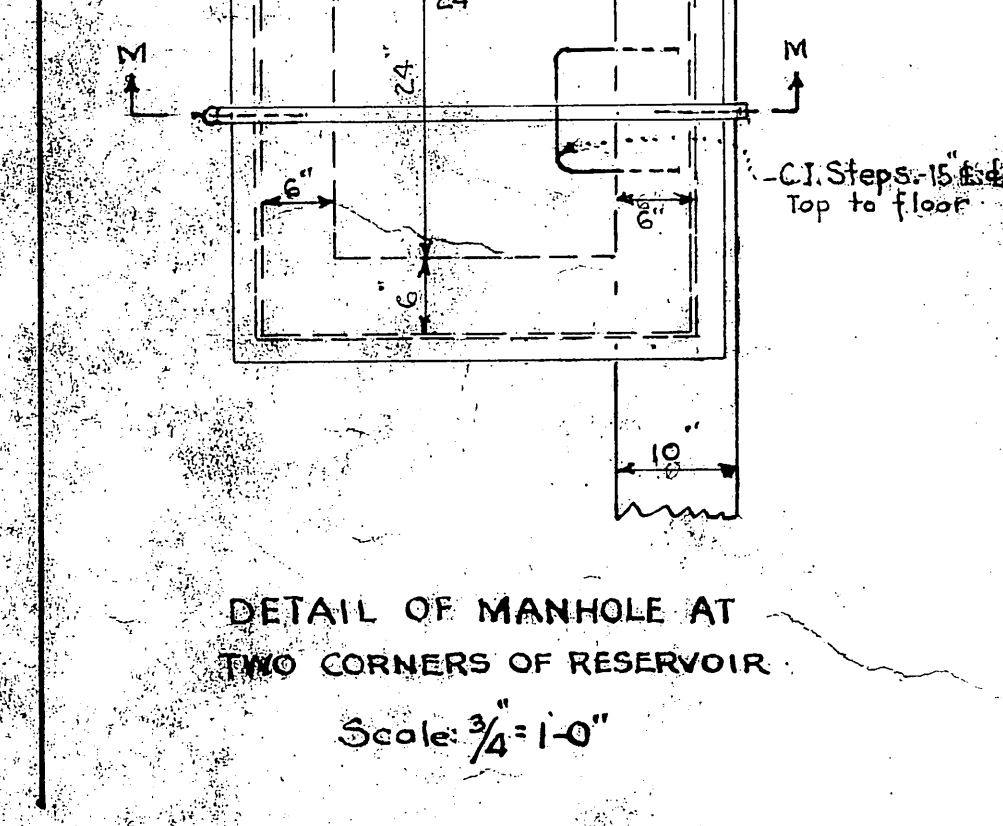
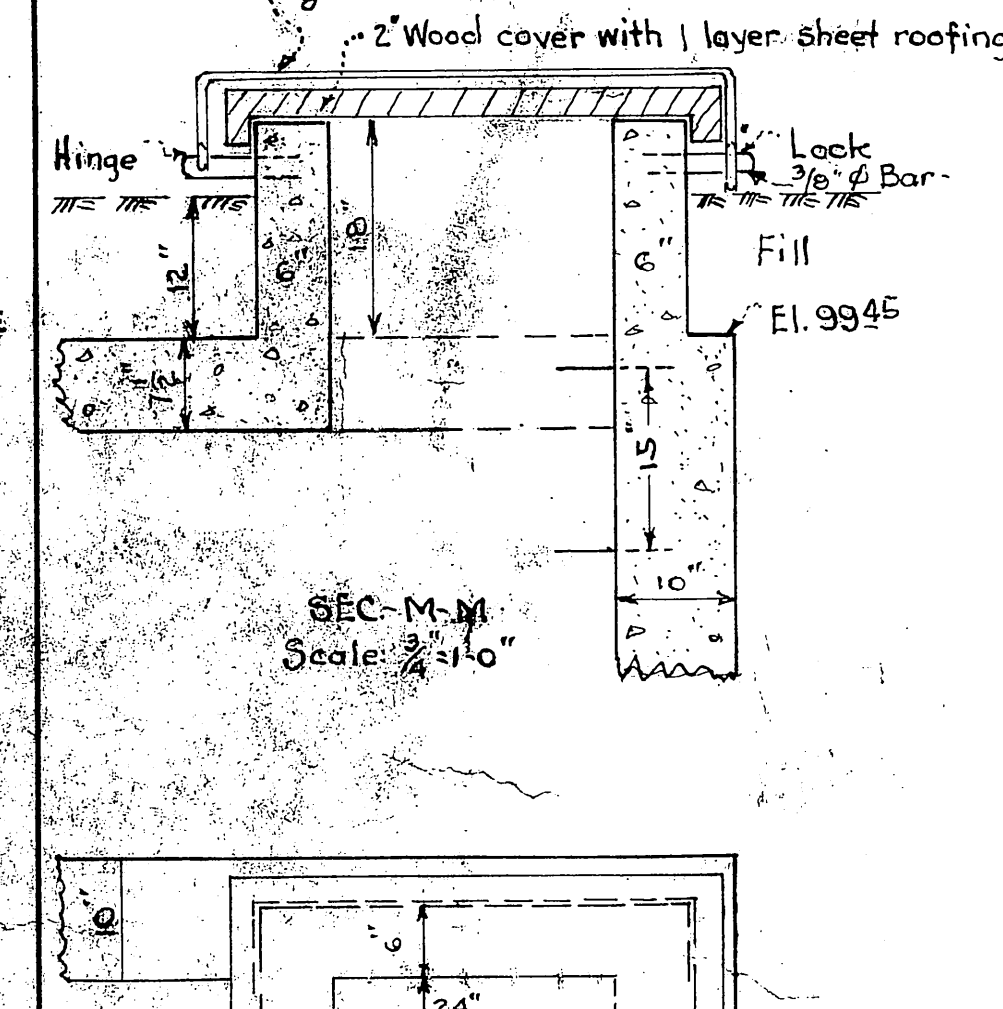
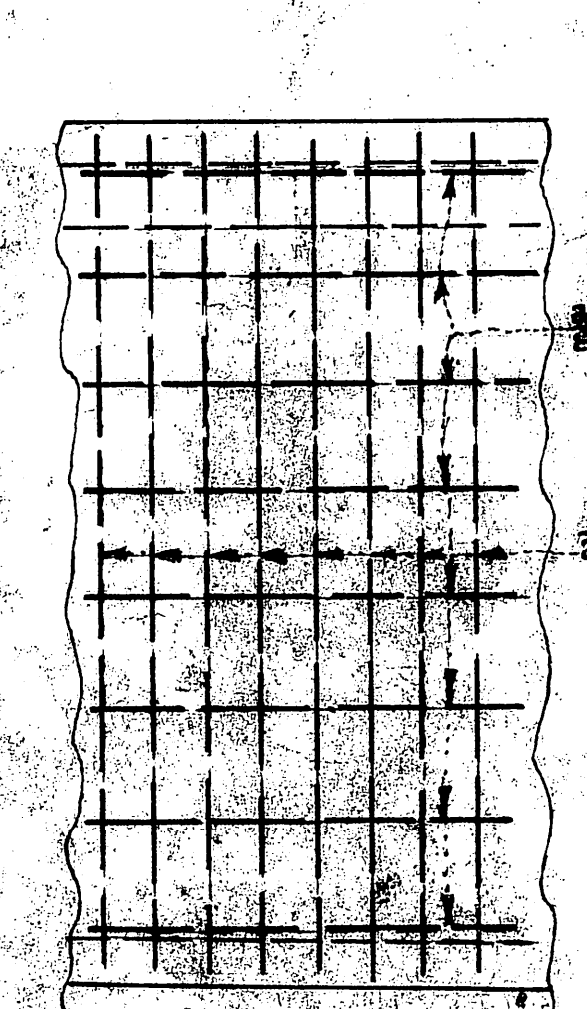
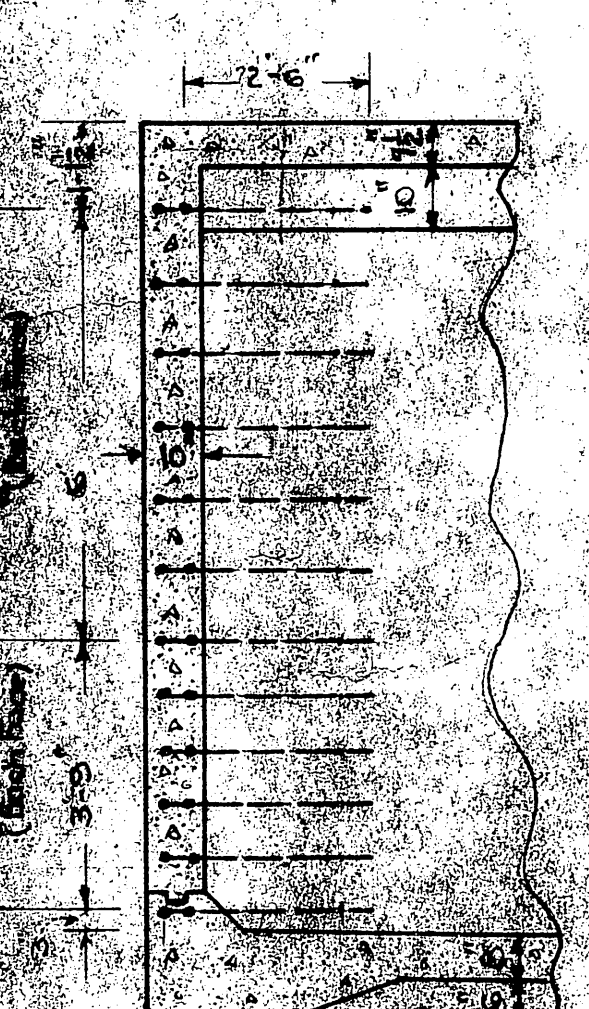


SECTION ON  $\phi$  TOP BEAM &  $\phi$  FLOOR BEAM.  
Scale: 3/4" = 1'-0"

LOCATION	MKD	SIZE	PCS	BENDING
Floor G	1" $\phi$	8		1'-9 1/2" 21" 10'-10" 27" 3'-0" 27" 10'-6" 27" 3'-0" 27" 10'-10" 27" 1'-9 1/2"
Floor F	1" $\phi$	16		1'-9 1/2" 21" 10'-10" 27" 3'-0" 27" 10'-6" 27" 3'-0" 27" 10'-10" 27" 1'-9 1/2"
Floor A	5/8" $\phi$	45		1'-9 1/2" 21" 10'-10" 27" 3'-0" 27" 10'-6" 27" 3'-0" 27" 10'-10" 27" 1'-9 1/2"
Floor B	5/8" $\phi$	45		1'-9 1/2" 21" 10'-10" 27" 3'-0" 27" 10'-6" 27" 3'-0" 27" 10'-10" 27" 1'-9 1/2"
Floor C	5/8" $\phi$	45		1'-9 1/2" 21" 10'-10" 27" 3'-0" 27" 10'-6" 27" 3'-0" 27" 10'-10" 27" 1'-9 1/2"
Floor I	5/8" $\phi$	30		1'-9 1/2" 21" 10'-10" 27" 3'-0" 27" 10'-6" 27" 3'-0" 27" 10'-10" 27" 1'-9 1/2"
Floor H	5/8" $\phi$	30		Same as G
Floor D	1" $\phi$	6		1'-9 1/2" 21" 10'-10" 27" 3'-0" 27" 10'-6" 27" 3'-0" 27" 10'-10" 27" 1'-9 1/2"
Top J	1" $\phi$	2		1'-9 1/2" 21" 10'-10" 27" 3'-0" 27" 10'-6" 27" 3'-0" 27" 10'-10" 27" 1'-9 1/2"
Top K	1" $\phi$	4		1'-9 1/2" 21" 10'-10" 27" 3'-0" 27" 10'-6" 27" 3'-0" 27" 10'-10" 27" 1'-9 1/2"
Top J <sub>1</sub>	1" $\phi$	1		1'-9 1/2" 21" 10'-10" 27" 3'-0" 27" 10'-6" 27" 3'-0" 27" 10'-10" 27" 1'-9 1/2"
Top K <sub>1</sub>	1" $\phi$	2		1'-9 1/2" 21" 10'-10" 27" 3'-0" 27" 10'-6" 27" 3'-0" 27" 10'-10" 27" 1'-9 1/2"
Corners N	5/8" $\phi$	96		1'-9 1/2" 21" 10'-10" 27" 3'-0" 27" 10'-6" 27" 3'-0" 27" 10'-10" 27" 1'-9 1/2"
Man Hole	1/2" $\phi$	19		1'-9 1/2" 21" 10'-10" 27" 3'-0" 27" 10'-6" 27" 3'-0" 27" 10'-10" 27" 1'-9 1/2"
Man Hole	1/2" $\phi$	35		1'-9 1/2" 21" 10'-10" 27" 3'-0" 27" 10'-6" 27" 3'-0" 27" 10'-10" 27" 1'-9 1/2"



Note:  
Built As Shown

ROCKWALL, TEXAS  
WATERWORKS IMPROVEMENTS

STORAGE RESERVOIR  
DETAILS

DESIGNED BY W.S. FREESE & NICHOLS  
DRAWN BY M.R. Consulting Engineers  
CHECKED BY Wm. G. Fort Worth, Texas

4504-4  
AUGUST 1945