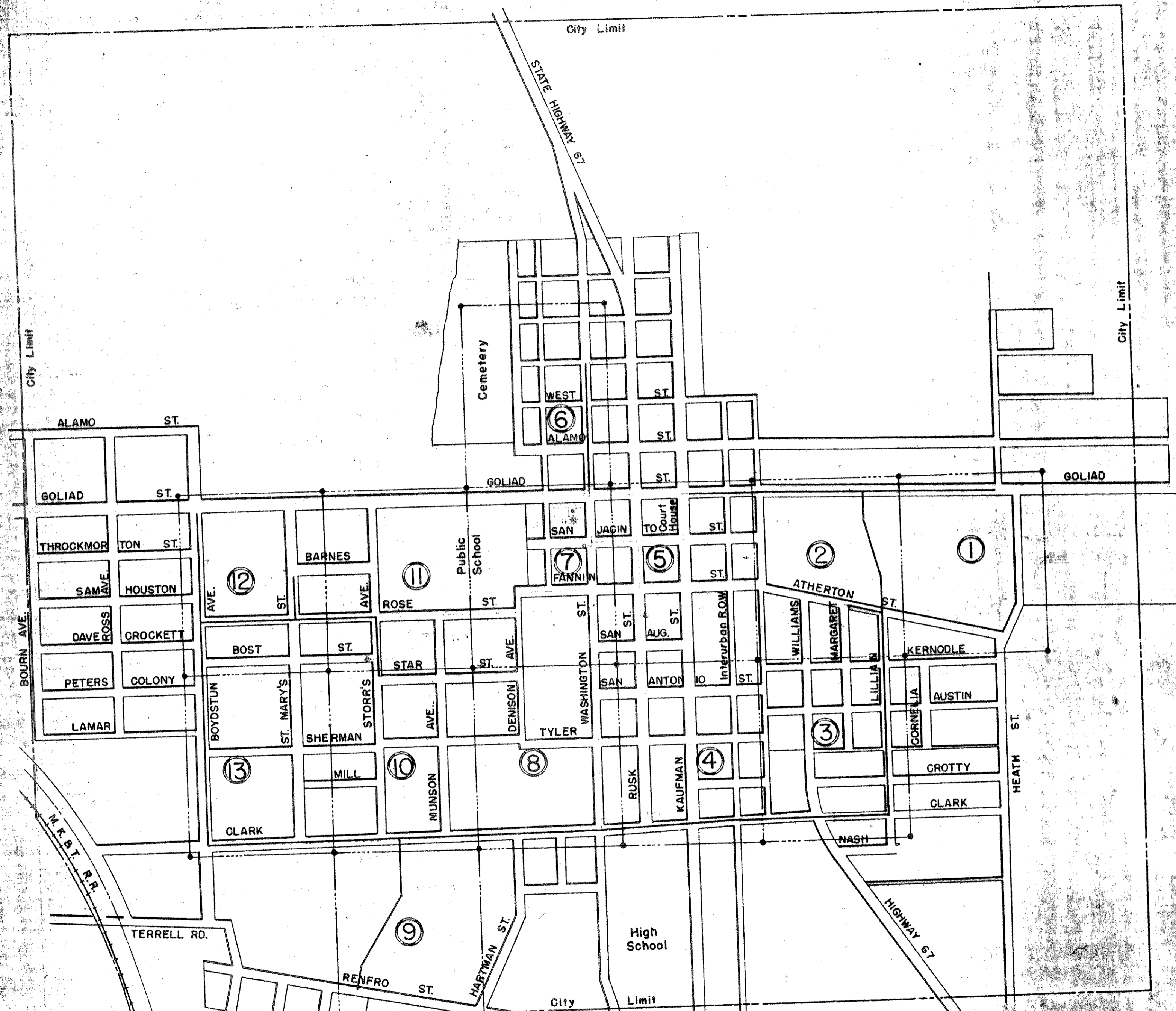
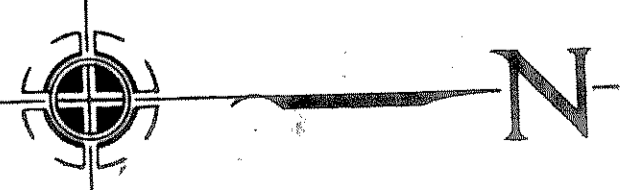


CITY OF
ROCKWALL, TEXAS
• PLAT SHEETS •
WATER DISTRIBUTION SYSTEM

FREESE & NICHOLS
CONSULTING ENGINEERS
Fort Worth, Texas
1946



ROCKWALL, TEXAS
 KEY MAP
 FOR
 PLAT SHEETS
WATER DISTRIBUTION SYSTEM



FREESE & NICHOLS
 Consulting Engineers
 Fort Worth, Texas
 February 1946

38

41

40

EMM

JANE

42

43

46

47

BOURN STREET

37

PETERS COLONY

11' 11" 1957

2 10

W. D. AUSTIN'S ADDITION

9

27

26

REL Halford



Existing to remain in service

1" Service

6"

Joe Spafford, Jr.
2651276

6" x 2" Tapped Plug



Fence - Assumed P.L.

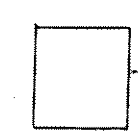
38.8'

2.8'

13.9'

25

C.A. Brownwell
2651397



Reconnect all Services to houses fronting on new main with Copper tubing to meter

GOLIAD STREET

Abandon Existing 1 1/4" 2"

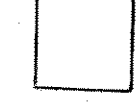
6" C.I. Main Laid Feb. 1946

Abandon Existing 3/4"

Pearl Howe
2651403

24

Coates
2651404



O.C. Long
2651399



23

A.V. Harrell
2651398



22

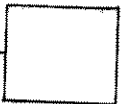
Kimrell
2651396



Match Line

124 A

Smith
2651401



124 B

H.H. Barringer
2651402



Bryant
2651400



Geo. Cade
2651395



BARNES ADDITION

5

6

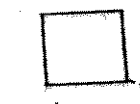
7

8

9

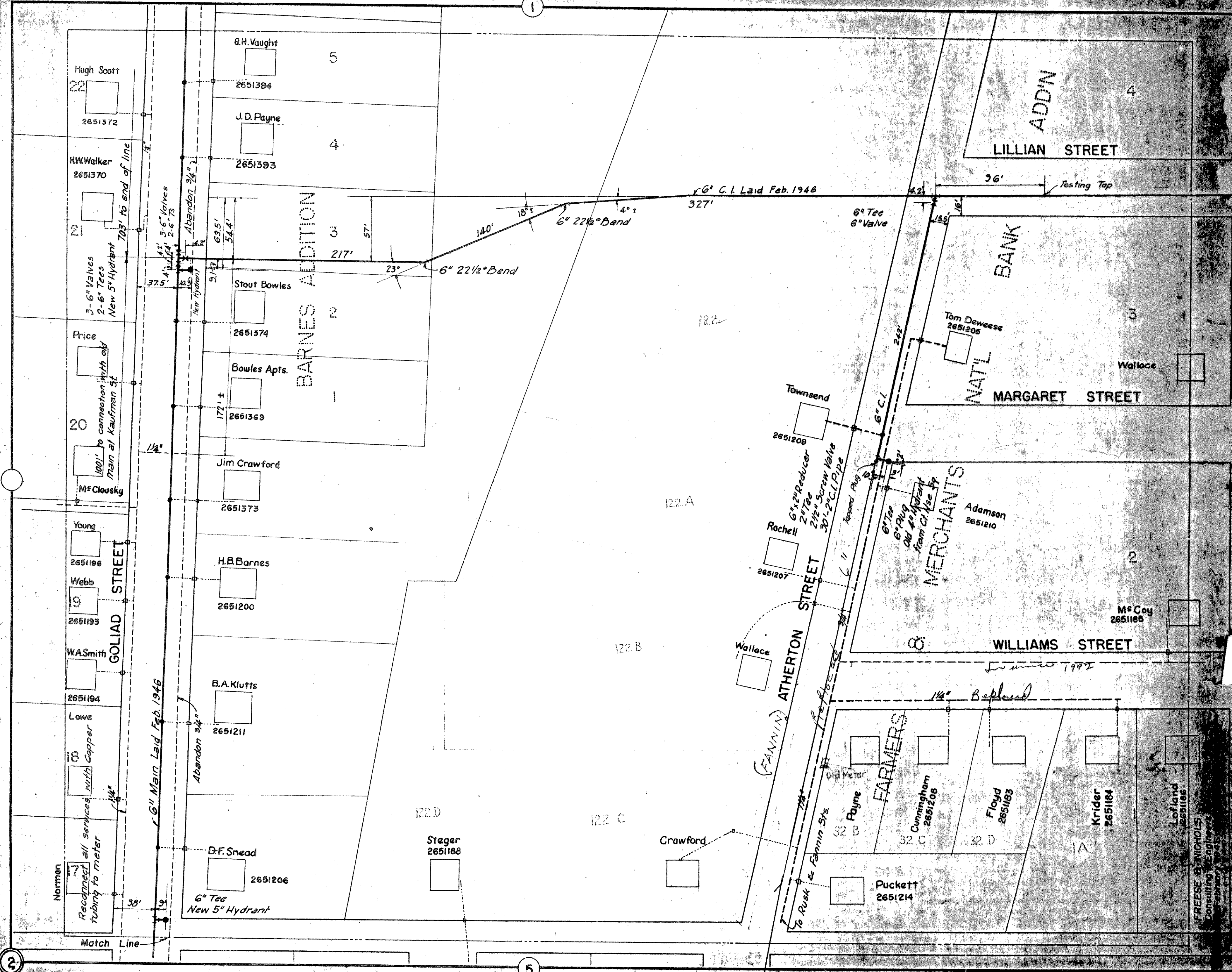
Barnhardt
2651180

Ed Shoemaker
3 962 150



HEATH ST.

(FANNIN) ATHERTON STREET
FARMERS & MERCHANTS NATIONAL BANK ADDITION



Hugh Scott
22
2651372

H.W. Walker
2651370

Price
100' to connection with old main at Kaufman St
M^r Clousky

Young
2651196

Webb
2651193

W.A. Smith
2651194

Lowe
Copper
30'

Norman
Reconnect all services with copper tubing to meter
38'

G.H. Vaught
5
2651394

J.D. Payne
4
2651393

Stout Bowles
2
2651374

Bowles Apts.
172 ±
2651369

Jim Crawford
2651373

H.B. Barnes
2651200

B.A. Klutts
2651211

D.F. Snead
2651206
6" Tee
New 5" Hydrant

Steger
2651188

Townsend
2651209

Rochell
2651207

Wallace

Tom Deweese
2651205

Adamson
2651210

M^r Coy
2651185

Payne
32 B
Old Meter

Cunningham
2651208
32 C

Floyd
2651183
32 D

Krider
2651184
IA

Lofland
2651186

Puckett
2651214

6" Main Laid Feb. 1946

BARNES ADDITION

ATHERTON STREET
(FANNIN)

MERCHANTS

FARMERS

LILLIAN STREET
ADDN

MARGARET STREET

WILLIAMS STREET

6" C.I. Laid Feb. 1946

703' to end of line

New Hydrant

1/4"

Abandon 3/4"

Match Line

140' 18° ±
6" 22 1/2° Bend
4° ±
327'

23°
6" 22 1/2° Bend

36' Testing Tap

6" Tee
6" Valve

6" C.I.

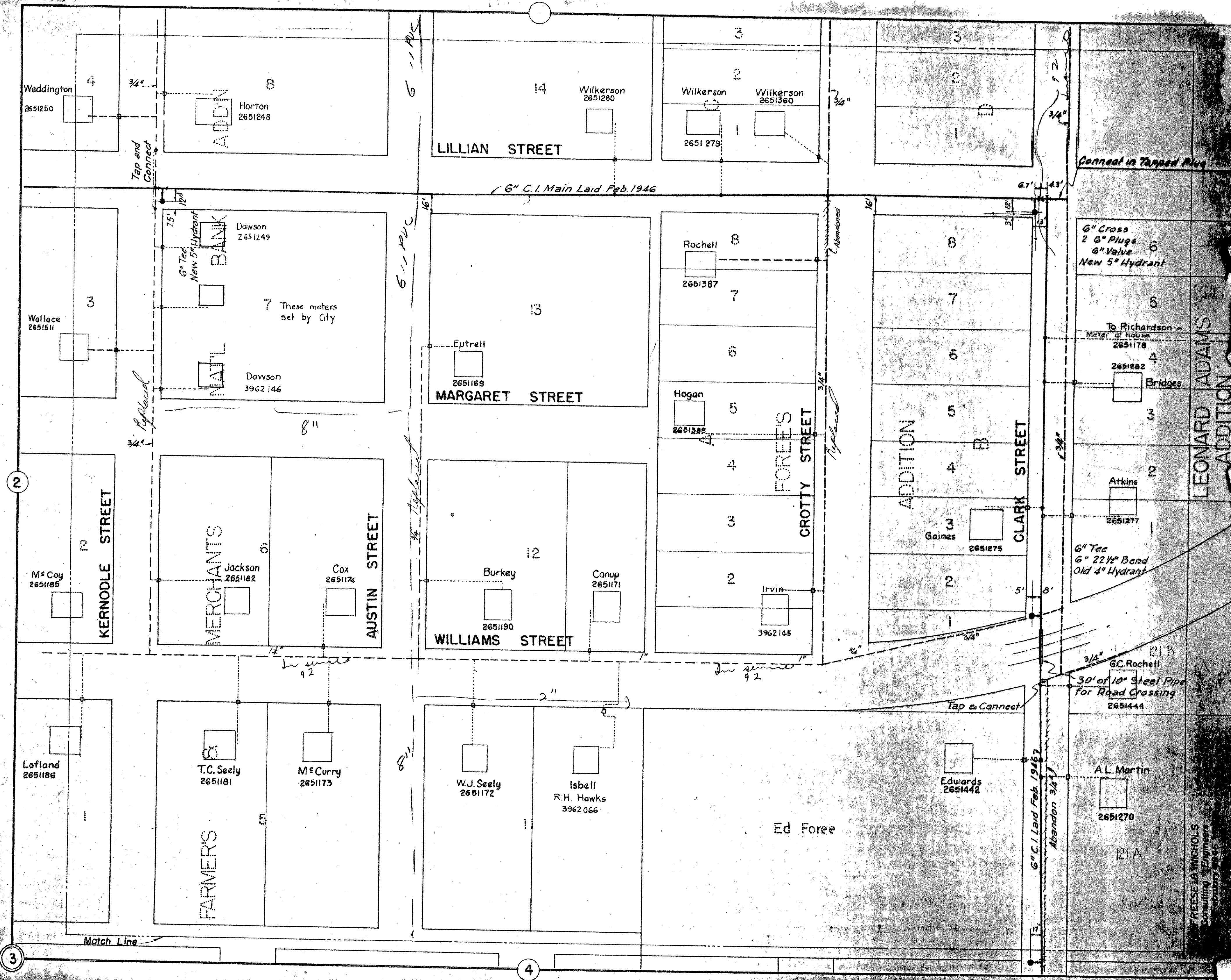
6" x 2" Reducer
2 1/2" Tee
2 1/2" Screw Valve
30" 2" C.I. Pipe

6" Tee
6" Plug
Old Hydrant
from C.I. Use by

1/4" Replaced

To Rusk & Fannin Sts.

FREESE & NICHOLS
Consulting Engineers
February 1946



Connect in Tapped Plug

6" Cross
2 6" Plugs
6" Valve
New 5" Hydrant

To Richardson -
Meter at house
2651178

2651282
Bridges

Atkins
2651277

6" Tee
6" 22 1/2" Bend
Old 4" Hydrant

GC. Rochell
30' of 10" Steel Pipe
for Road Crossing
2651444

A.L. Martin
2651270

LEONARD ADAMS
ADDITION

FREESE & NICHOLS
Consulting Engineers
February 1946

6" C.I. Main Laid Feb. 1946

6" C.I. Laid Feb. 1946
Abandon 3/4"

Match Line

2

3

4

3

Ed Foree

4 FARMERS 8

17 MERCHANTS

18 NAT'L BANK
NORTH STREET

19 ADDITION
6" Tee
New 5" Hydrant

Jacobs

5
1
4
6 5

20

21
KAUFMAN STREET

22

Paul Snow

5

6
Shewmake
Muncy 2651231
2651230
E.A. Payne
2651234
Sears
2651365
E.A. Payne
2651232
SAN ANTONIO STREET

Harris
2651233
Lawthorn
2651425
Shook
2651423
TYLER STREET

J.N. Lofland
2651226
RUSK STREET

J.L. Peoples

4

7
Wells
2651426
Match Line

Bischoff
2651427
10
Underwood
2651368

42
Skelton
2651366

8

43

Austin

INTERURBAN R. O. W.

STREET

New 6" Main laid Feb. 1946

Abandon

CLARK STREET

Abandon

6" Valve
2-6" 45° Bends
Existing 6" Cross

HIGH-SCHOOL
Replaced
Meter

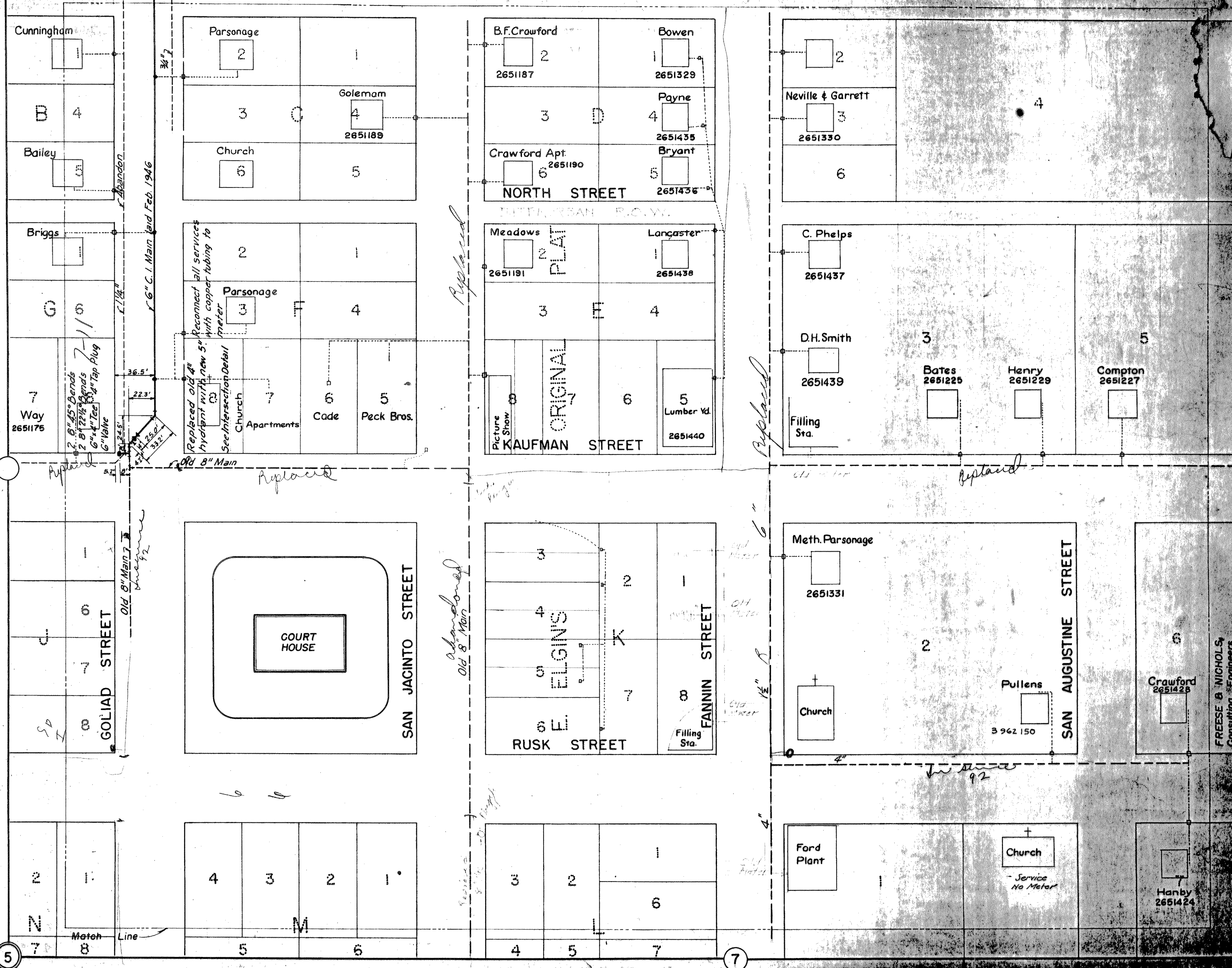
Old 4" Hydrant in place

Old Pump Discharge

Old 6" Cross

Replaced

FRESE & NICHOLS
Consulting Engineers
Austin, Texas
February 1946



Cunningham
1
B 4
Bailey
Briggs
G 5
7 Way 2651175

Parsonage 2
3
Church 5
Golemam 4 2651189
C

B.F. Crawford 2 2651187
Bowen 1 2651329
3
Payne 4 2651435
D
Crawford Apt. 6 2651190
Bryant 5 2651436
NORTH STREET

2
Neville & Garrett 3 2651330
4
6

2 0" 45° Bends
2 8" 22 1/2° Bends
6" 4" Tee & Tap Plug
6" Valve
36.5'
22.3'
24.25'
33.2'

2
Parsonage 3
Church 7
Apartments 6
Cade 5
Peck Bros.

Meadows 2 2651191
Lancaster 1 2651438
3
E 4
8
ORIGINAL 7
6
5 Lumber Yd. 2651440
KAUFMAN STREET

C. Phelps 2651437
D.H. Smith 2651439
Filling Sta.
Bates 2651225
Henry 2651229
Compton 2651227
3
5
6

6
GOLIAD STREET
Old 8" Main 7
92

COURT HOUSE
SAN JACINTO STREET

3
4
5
6
ELGINS
7
RUSK STREET
8
FANNIN STREET
Filling Sta.

Meth. Parsonage 2651331
Church
Pullens 3 962 150
SAN AUGUSTINE STREET
Crawford 2651428
6

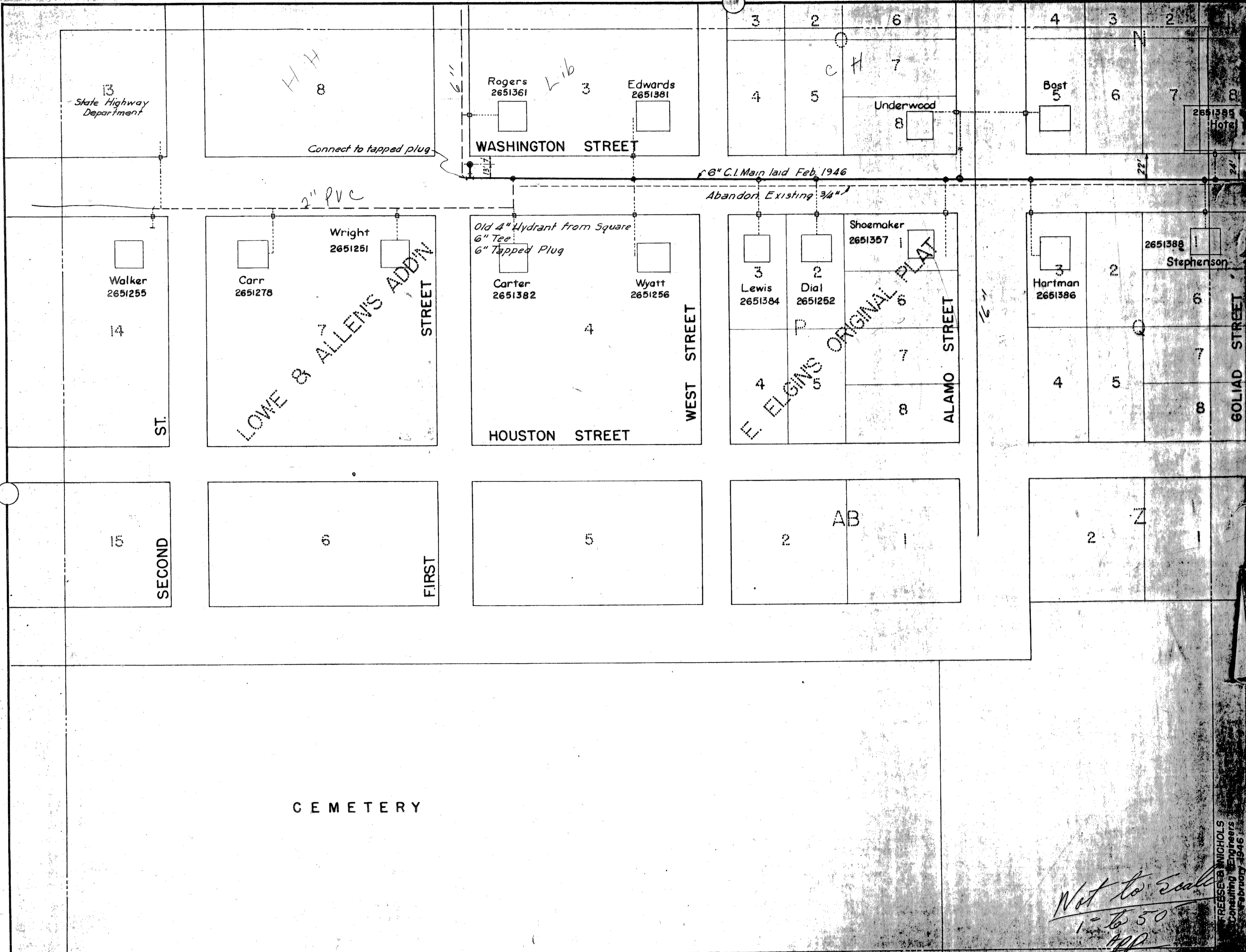
2
1
N
7
8
Match Line

4
3
2
1
M
5
5

3
2
1
6
L
4
5
7

Ford Plant
Church - Service No Meter
Hanby 2651424
7

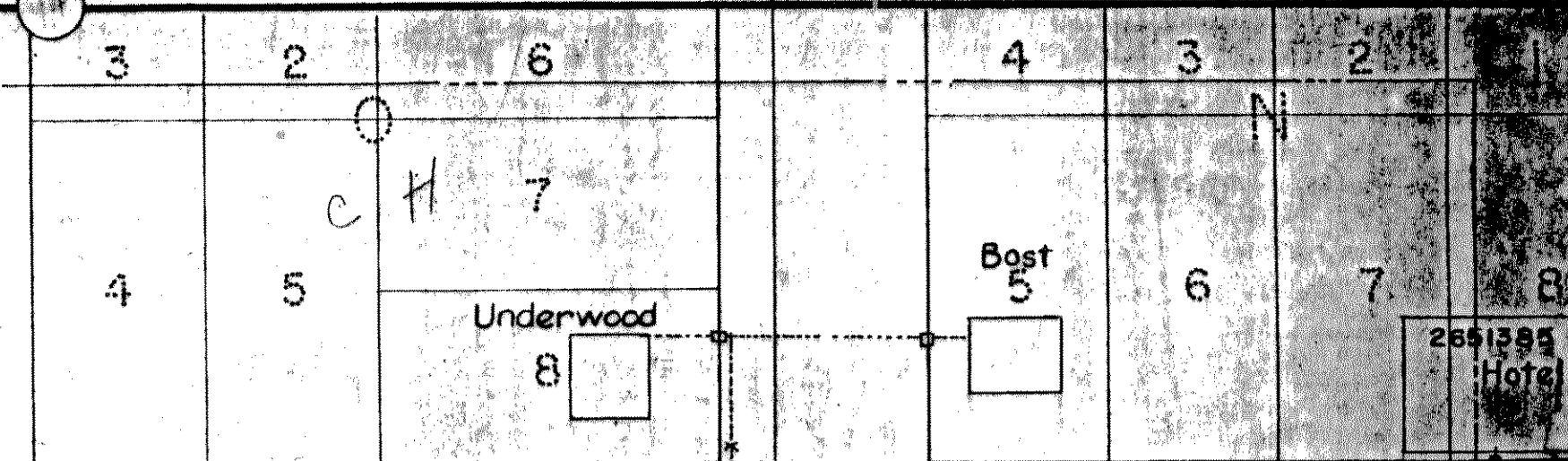
FRESE & NICHOLS,
Consulting Engineers
February 1946



13
State Highway
Department

H H
8

Rogers
2651361
L-16
3
Edwards
2651381



Connect to tapped plug

WASHINGTON STREET

6" C.I. Main laid Feb. 1946

Abandon Existing 3/4"

2" PVC

Walker
2651255

Carr
2651278

Wright
2651251

LOWE & ALLENS ADDIN
STREET

Old 4" Hydrant from Square
6" Tee
6" Tapped Plug

Carter
2651382

Wyatt
2651256

3
Lewis
2651384

2
Dial
2651252

Shoemaker
2651357

E. ELGINS ORIGINAL PLAT

Hartman
2651386

2651388
Stephenson

HOUSTON STREET

WEST STREET

ALAMO STREET

GOLIAD STREET

15

SECOND

6

FIRST

5

2

AB

1

2

Z

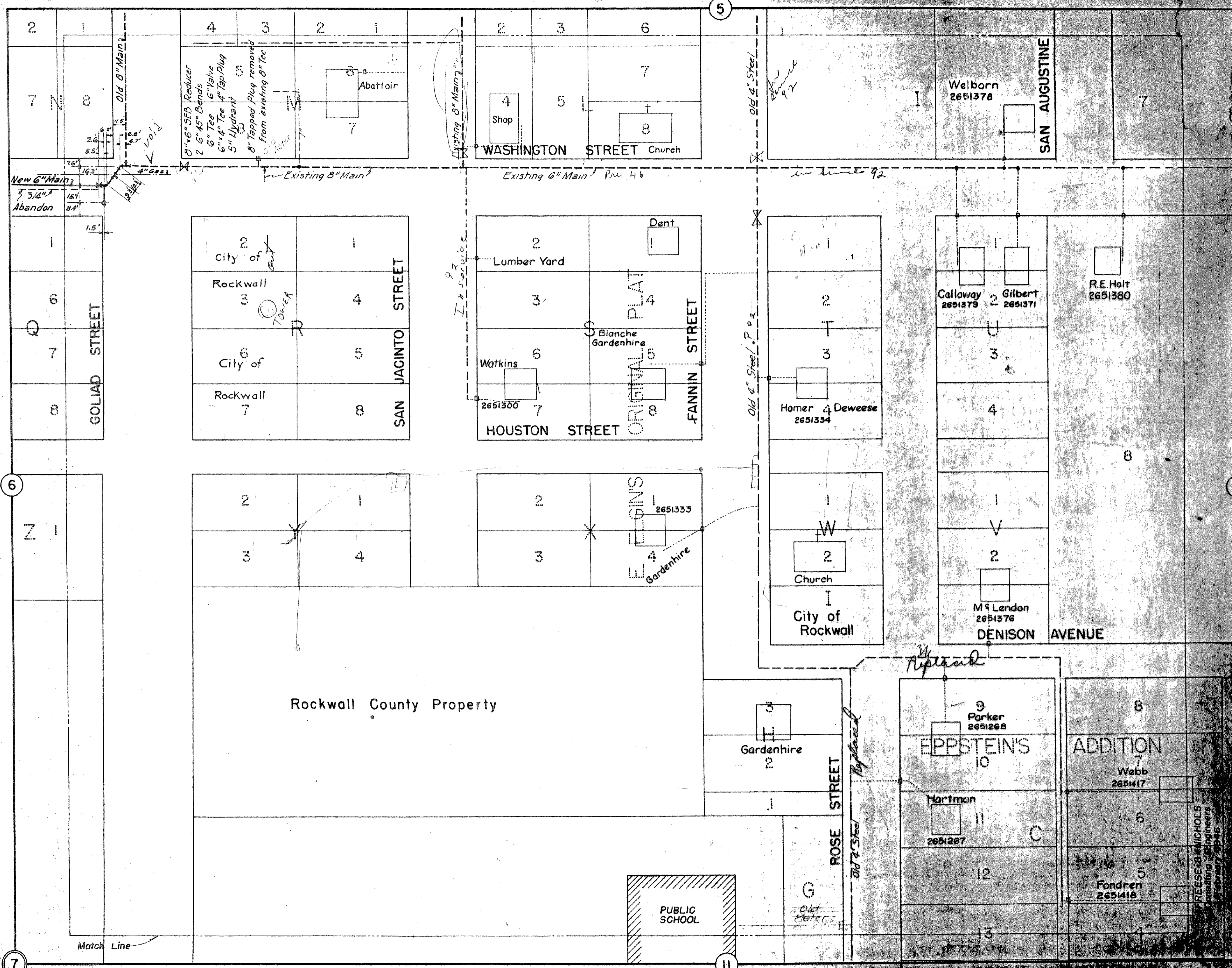
1

C E M E T E R Y

Match Line

Not to Scale
1" = 50'
APP

FRESEB & NICHOLS
Consulting Engineers
February 1946



8" x 6" SFD Reducer
2 6" 45° Bends
6" Tee
6" x 4" Tee 4" Tap Plug
5" Hydrant
8" Tapped Plug removed from existing 8" Tee

Abattoir

Shop
Church

Welborn
2651378

SAN AUGUSTINE

New 6" Main
5 3/4" Abandon

Existing 8" Main

Existing 6" Main P. 46

in line 92

city of
Rockwall
City of
Rockwall

SAN JACINTO STREET
SAN JACINTO STREET
SAN JACINTO STREET
SAN JACINTO STREET

Lumber Yard
Watkins
Dent
Blanche Gardenhire

ORIGINAL PLAT
FANNIN STREET

HOUSTON STREET

Homer Deweese
2651334

Calloway 2651379
Gilbert 2651371

R.E. Holt
2651380

Rockwall County Property

Gardenhire
Eppsteins

Church
City of Rockwall

M. London
2651376

DENISON AVENUE

Rockwall County Property

Gardenhire

ROSE STREET

Parker 2651268
EPPSTEIN'S

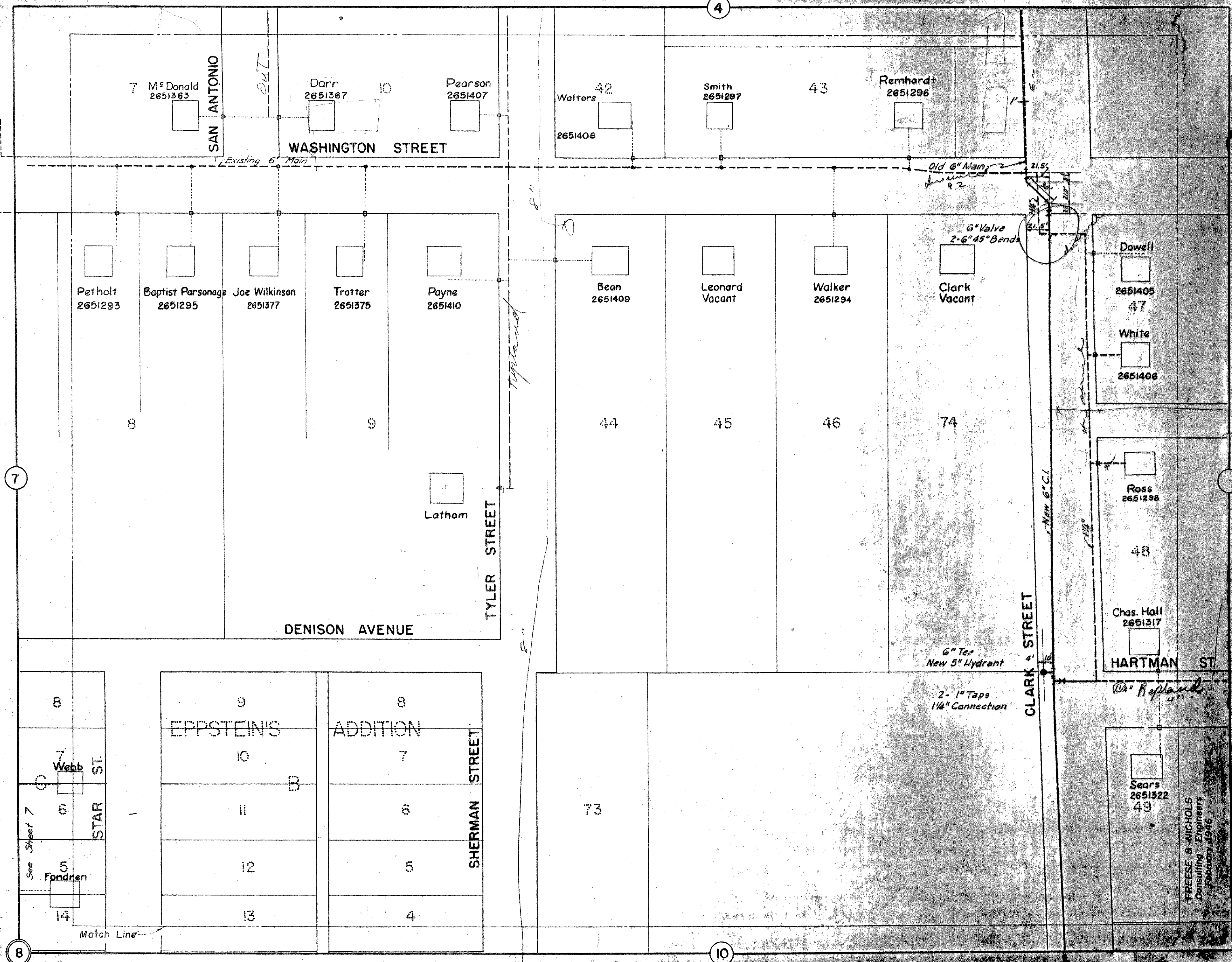
Webb
2651417

Hartman
2651267

Fondren
2651418

PUBLIC SCHOOL

PRESEB & NICHOLS
Consulting Engineers
February 1946



7 M^e Donald
2651363

Darr
2651367

Pearson
2651407

42
Walters
2651408

Smith
2651297

43

Remhardt
2651296

Petholt
2651293

Baptist Parsonage
2651295

Joe Wilkinson
2651377

Trotter
2651375

Payne
2651410

Bean
2651409

Leonard
Vacant

Walker
2651294

Clark
Vacant

Dowell
2651405

White
2651406

Ross
2651298

Chas. Hall
2651317

Sears
2651322

EPPSTEIN'S

ADDITION

See Sheet 7
Fondren

14

Match Line

FRESE & NICHOLS
Consulting Engineers
February 1946

Old 6" Main
92

6" Valve
2-6" 45° Bends

6" Tee
New 5" Hydrant

2- 1" Taps
1 1/4" Connection

CLARK STREET

TYLER STREET

SAN ANTONIO

WASHINGTON STREET

DENISON AVENUE

HARTMAN ST

Repland

Repland

Repland

7

8

4

10

10

9

HARTMAN ST.

RENFRO STREET

Thaxton



See Sheet 10

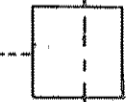
c/L Munson



Shaw

51

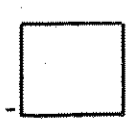
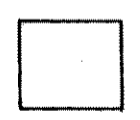
CLARK STREET



D. Wimpee

See Sheet 10

c/L Storrs



Match Line

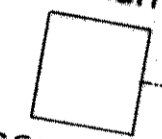
Approx. 31' 0"

22 1/2° Bend

Laid Feb. 1946

880' 6" C.I. Main

Gus Hartman



2651343

Lillard



2651344

Shoemaker
2651341

McIntire
2651345

Jordan



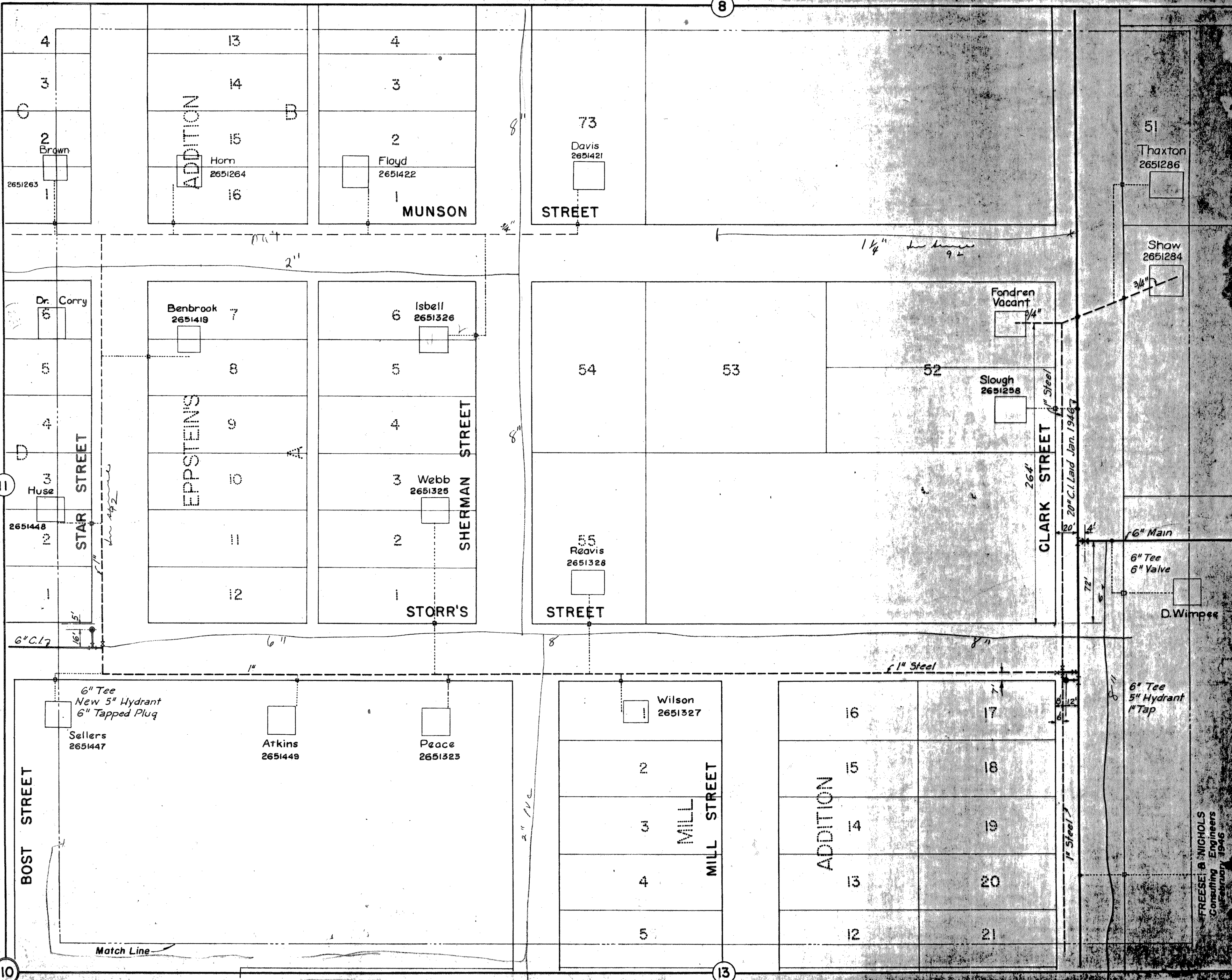
2651272

6" Cross
2- 6" Plugs
New 5" Hydrant

Darr
2651342

FREESE & NICHOLS
Consulting Engineers
February 1946

c. Hydrant work 2"



8

9

11

10

13

ADDITION

EPPSTEINS

MUNSON

STREET

STREET

CLARK STREET

SHERMAN STREET

BOST STREET

STAR STREET

MILL STREET

ADDITION

Match Line

FREESE & NICHOLS
Consulting Engineers
February 1946

20" C.I. Laid Jan. 1946

1 1/4" in house

in 192

2" PVC

1" Steel

1" Steel

1" Steel

72'

4'

20'

264'

3/4"

3/4"

3/4"

3/4"

3/4"

3/4"

3/4"

3/4"

3/4"

3/4"

3/4"

3/4"

3/4"

3/4"

3/4"

3/4"

3/4"

3/4"

3/4"

3/4"

3/4"

3/4"

3/4"

3/4"

3/4"

3/4"

3/4"

3/4"

3/4"

3/4"

3/4"

3/4"

3/4"

3/4"

3/4"

3/4"

3/4"

3/4"

3/4"

3/4"

3/4"

3/4"

3/4"

3/4"

3/4"

3/4"

3/4"

3/4"

3/4"

3/4"

3/4"

3/4"

3/4"

3/4"

3/4"

3/4"

3/4"

3/4"

3/4"

3/4"

3/4"

3/4"

3/4"

3/4"

3/4"

3/4"

GOLIAD STREET

7
PUBLIC SCHOOL

G
Old
Meter

13
Mills
2651265

4

14

3

15

H.O. Hall

2

Brown

16

2651420

2651263

Continued on
Sheet 10

MUNSON STREET

9

Stevenson
2651391

7

Queen

2651389

5

Weeks

2651392

ROSE STREET

3

2

Roy Smith

2651416

1

STORR'S STREET

EPPSTEIN'S
ADDITION

7

Garner
2651266

8

9

10

11

12

Dr. Corry

6

5

4

3

Huse

2651448

2

1

STAR STREET

6" C.I. Laid Jan. 1946

See Intersection Detail

8"

8"

12" DWT

12' 7.5'

Barnes
2651414

78

Mrs. Fincher

2651413

79

BARNES STREET

in place

Jacobs
2651415

58

Bowen
2651450

57

*Best
Home*

116

BOST STREET

Sellers
2651447

Match Line

FRESE & NICHOLS
Consulting Engineers
February 1946

11

12

GOLIAD STREET

BARNES STREET

ROSE STREET

BOST STREET

ST. MARY'S STREET

BOYDSTUN STREET

Briscoe
2651355

B.F. Jones
2651441

J.W. Tiwater
2651412

Andrews
2651352

Mrs. S. Spong
2651353

Mrs. C. Spong
2651351

F. Kluffts
2651354

Adams
2651356

Lowe
2651305

Jacobs
2651316

Jacobs
2651306

J. Smith
2651433

Brooks
2651349

POST OFFICE

Water Tower

Fire Station

SANGER'S

ADDITION

SAM HOUSTON STREET

DAVE CROCKETT STREET

Match Line

FRESE & NICHOLS
Consulting Engineers
February 1946

8.5'

6"

*6" T, 6" Plug
New 5" Hydrant*

*6" T
6" Valve*

2" PVC

11.7'

80

116

116

81

116

116

8.5'

80'

*6" T, 6" Plug
New 5" Hydrant*

6" C.I. Laid Jan. 1946

6" C.I. Main Laid Jan 1946

*6" T
2-6" Valves*

16"

6" 1/4"

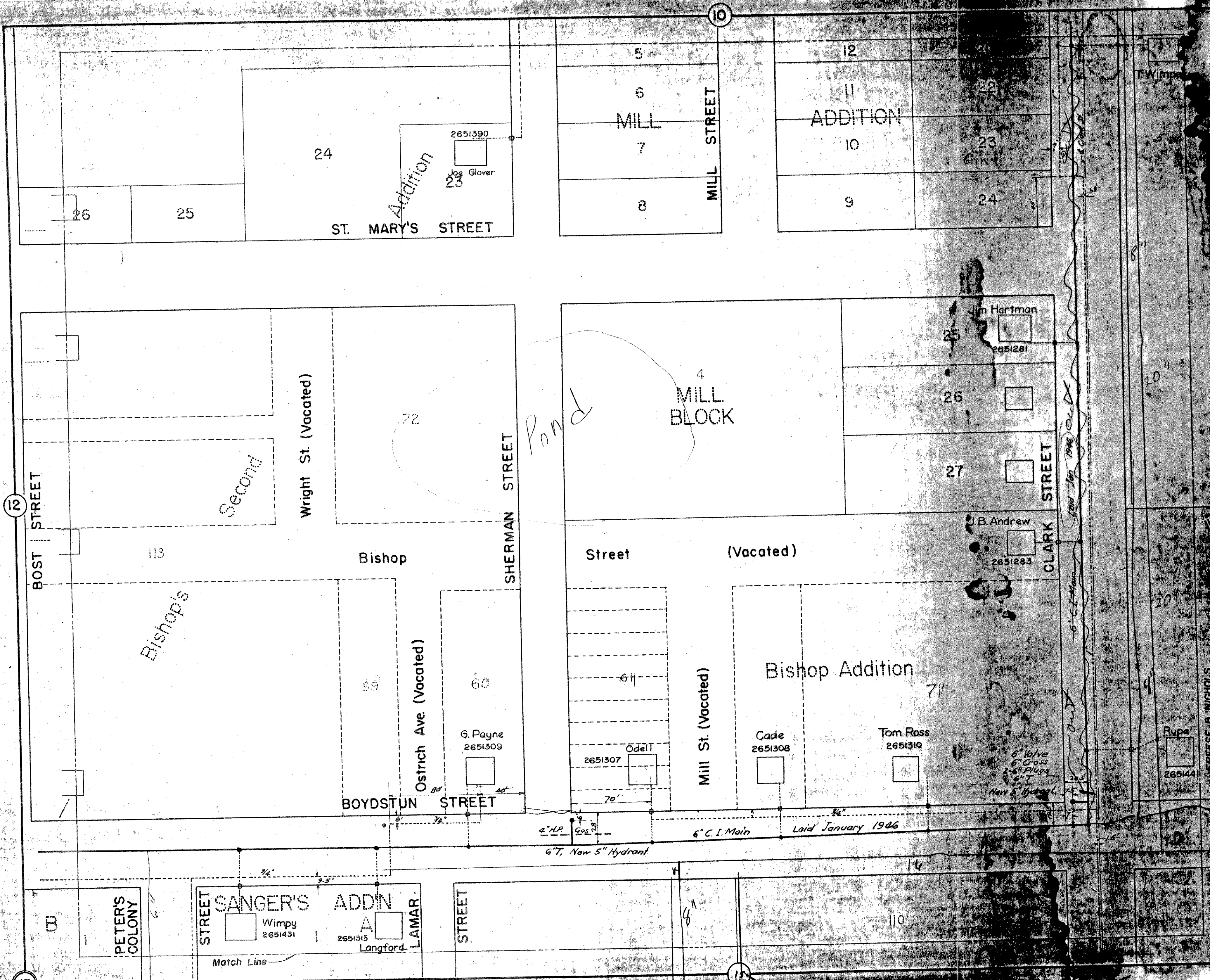
16"

6"

16"

OUT

1"



24
 Addition
 2651390
 Jag Glover
 23
 ST. MARY'S STREET

5
 6
 MILL
 7
 8
 MILL STREET

12
 11
 ADDITION
 10
 9
 22
 23
 24

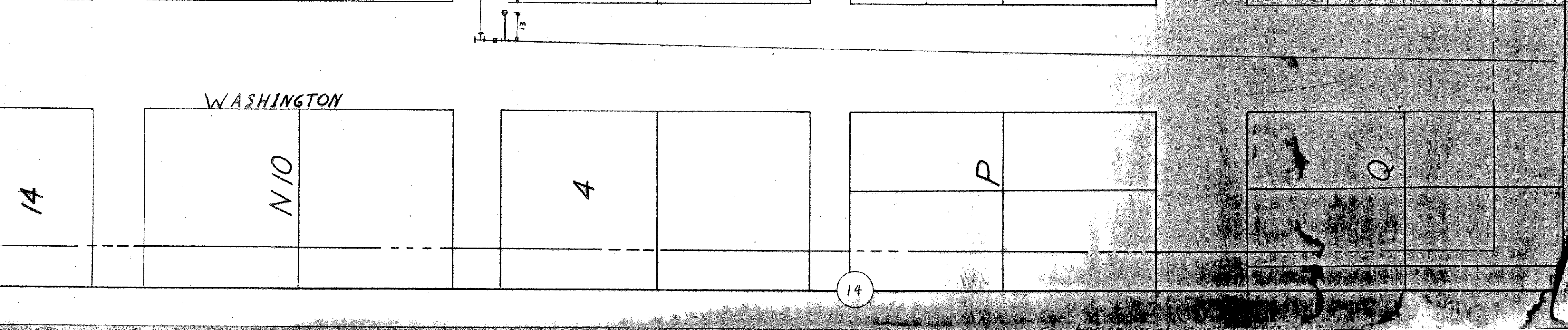
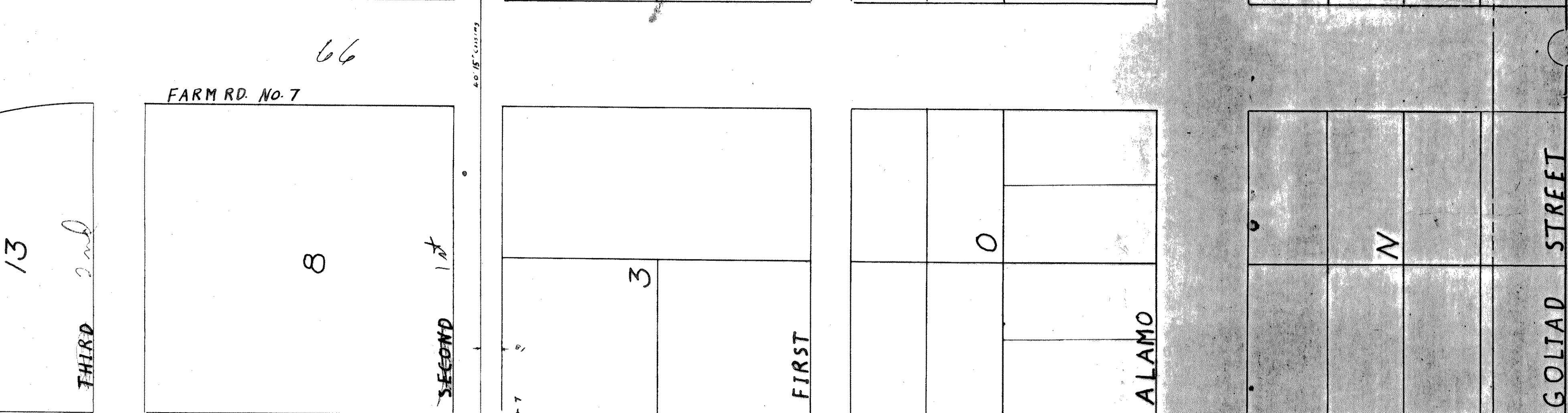
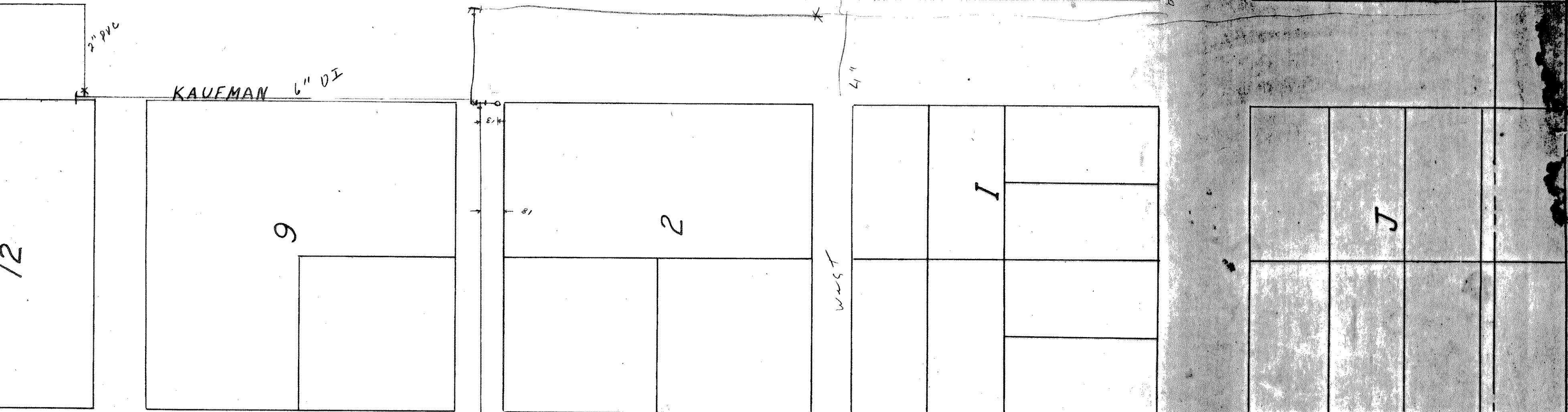
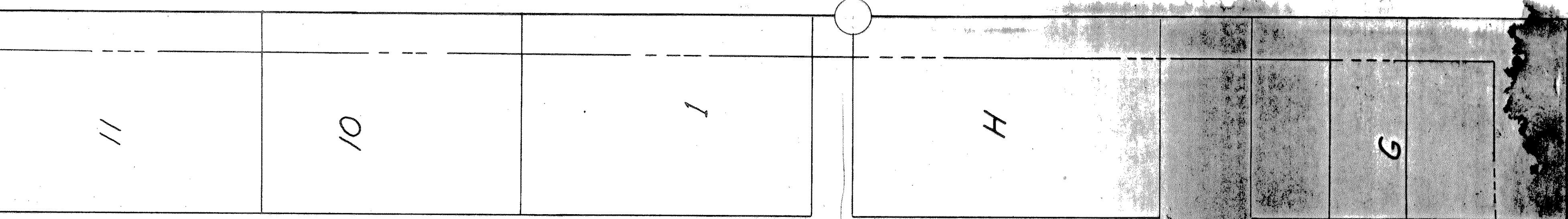
12
 BOST STREET
 113
 Bishop
 Bishop's
 Wright St. (Vacated)
 72
 SHERMAN STREET
 60
 G. Payne
 2651309
 Ostrich Ave (Vacated)
 59
 BOYDSTUN STREET

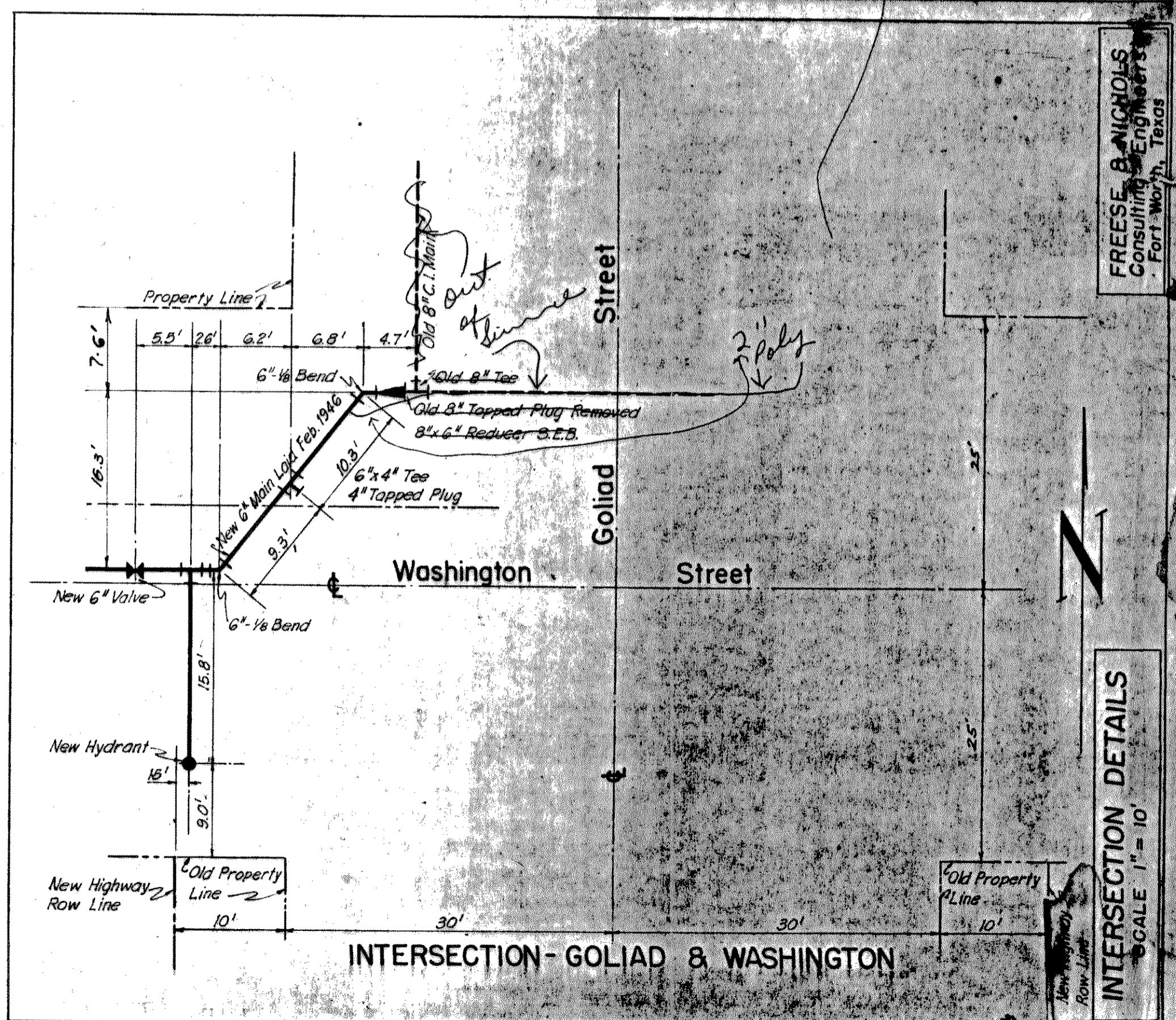
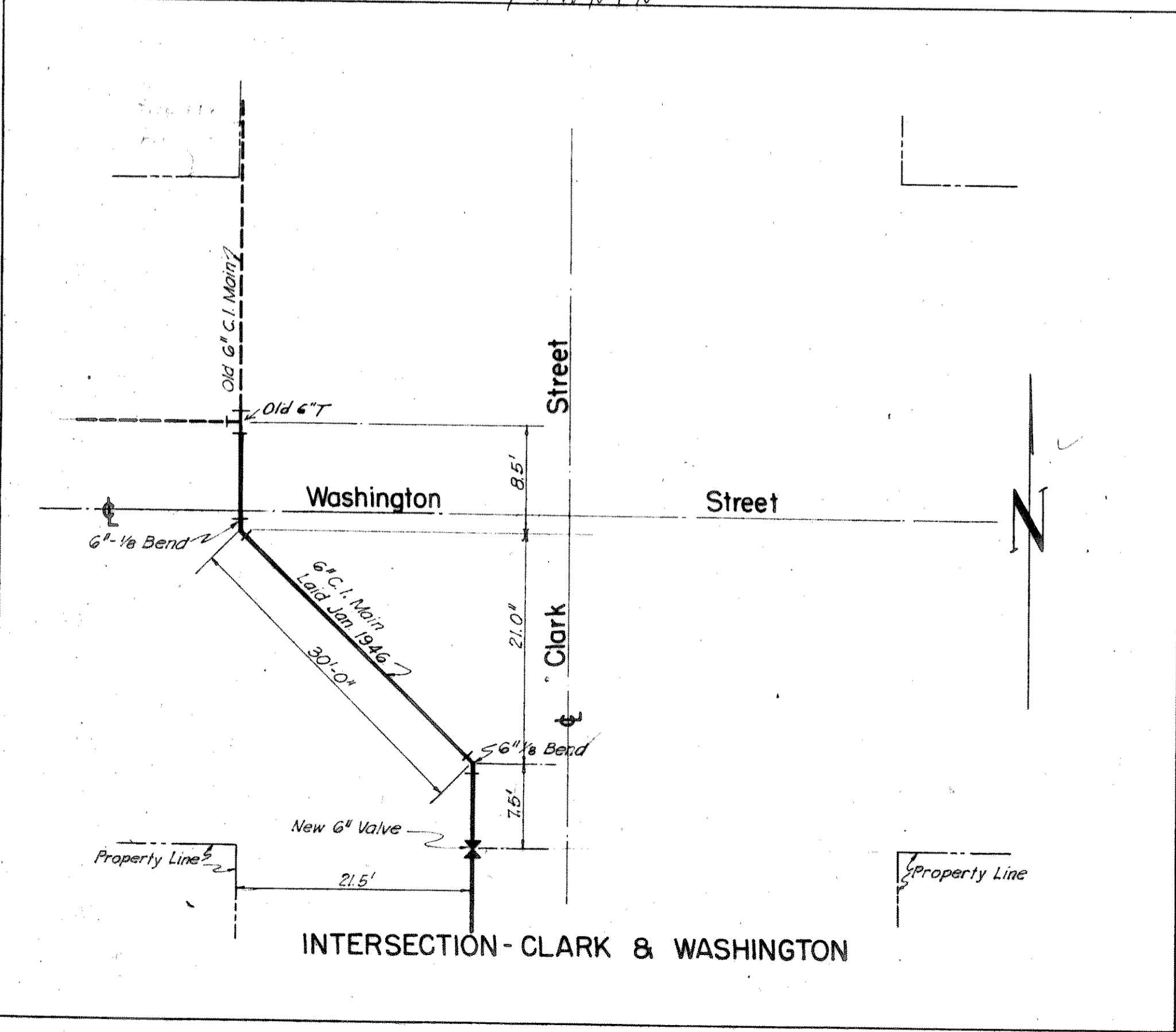
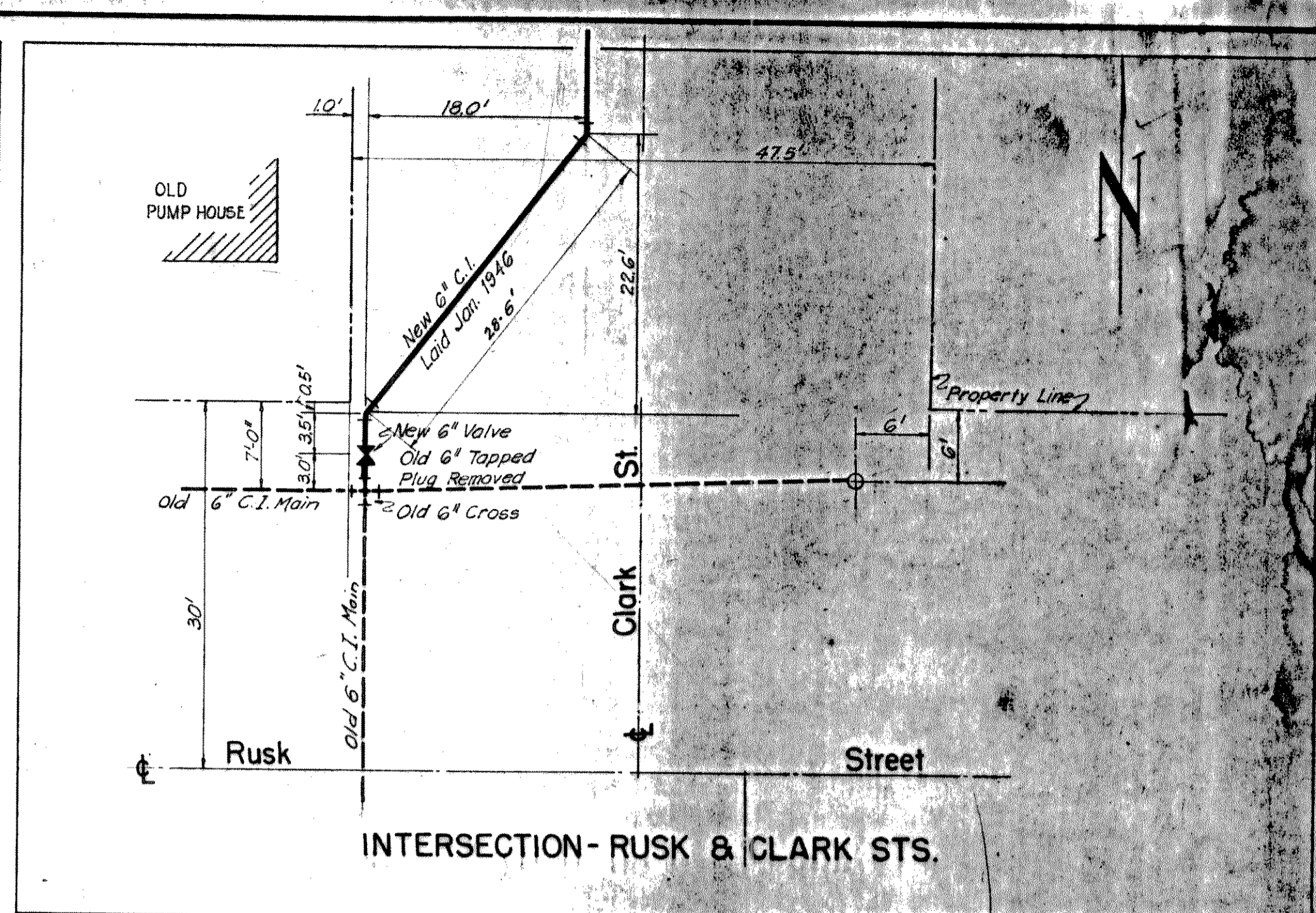
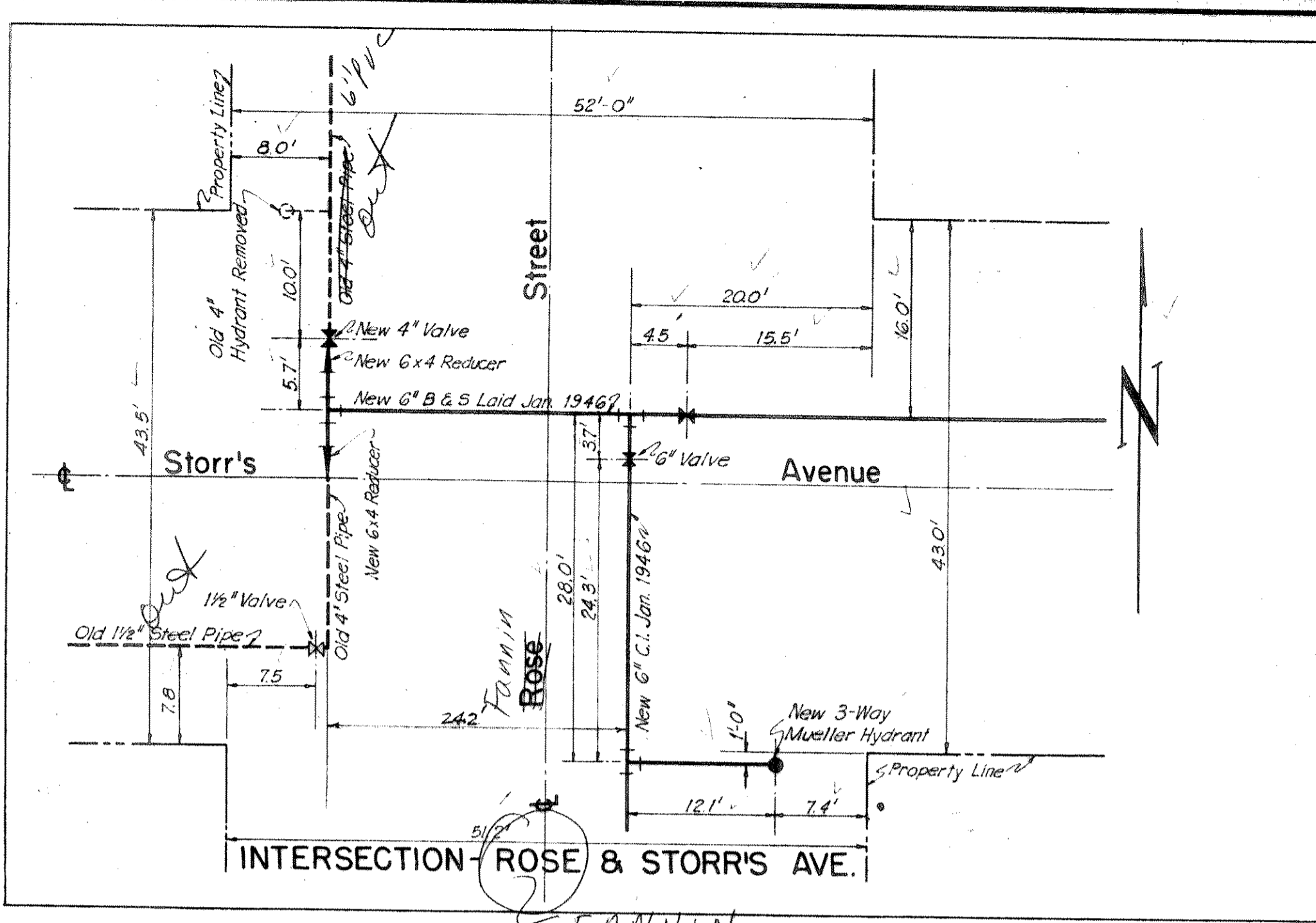
4
 MILL BLOCK
 Pond
 Street (Vacated)
 25
 Jim Hartman
 2651281
 26
 27
 CLARK STREET
 J.B. Andrew
 2651283
 Bishop Addition
 71
 Cade
 2651308
 Tom Ross
 2651310
 Mill St. (Vacated)

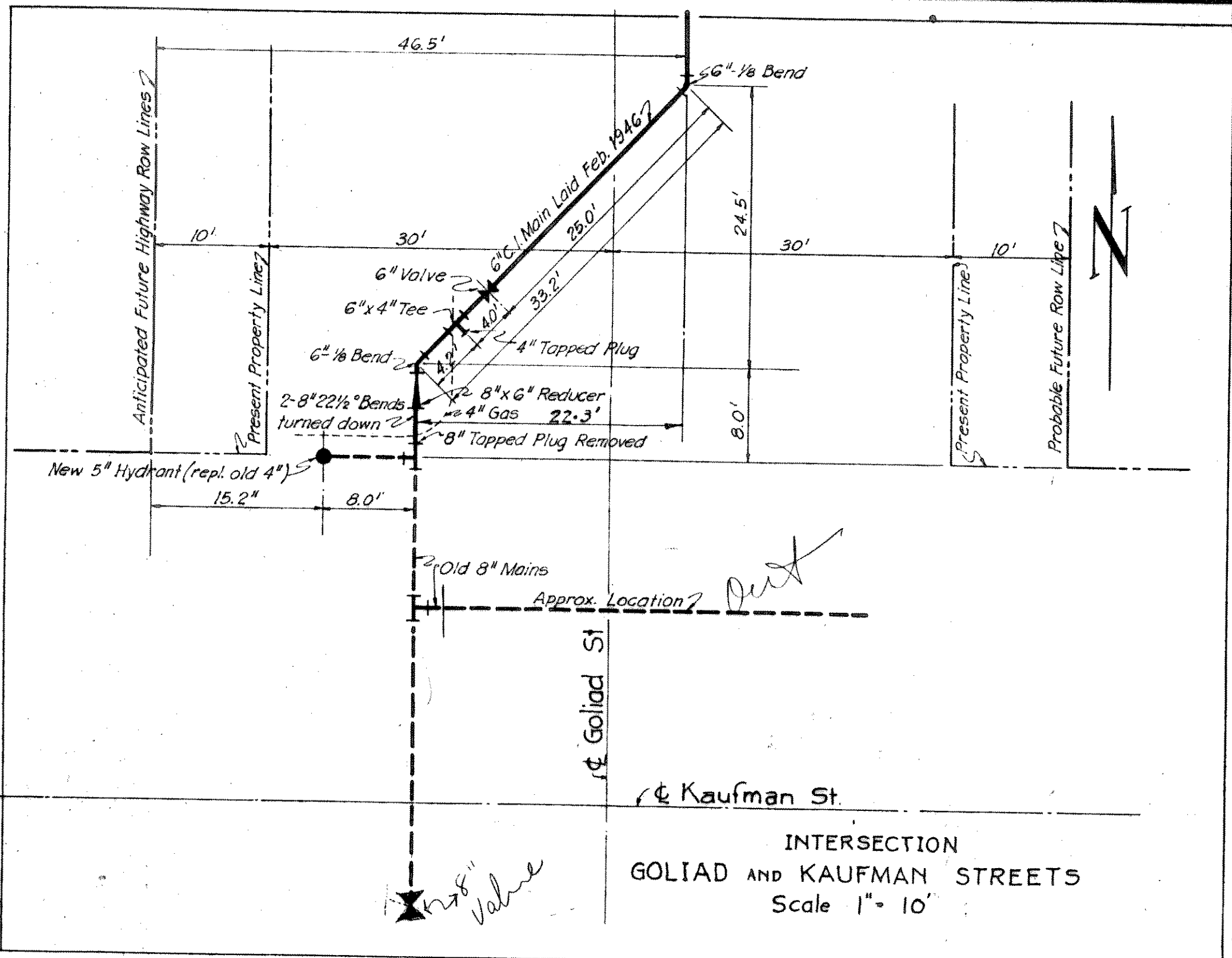
13
 PETER'S COLONY
 STREET
 SANGER'S
 2651431
 ADD'N
 2651315
 Langford
 LAMAR STREET
 STREET
 110
 15

6" C.I. Main Laid Jan 1946
 out
 6" T. New 5" Hydrant

FREESE & NICHOLS
 Consulting Engineers
 February 1946







MISCELLANEOUS NOTES

Location Of Testing Taps

- Boydston And Clark Streets
 - Rose And Storr's Streets
 - Hartman Branch
 - Washington And Goliad
 - Goliad North of Kaufman
 - Lillian Street
- 1.5 Feet West Of 6 Inch Valve
 - 1.5 Feet South Of Valve On Rose Street Line
 - 25.5 Feet East Of Valve On Clark Street
 - 1.1 Feet West Of Bell Of Valve
 - 63 Feet North Of North Line Kaufman.
 - 4.5 Feet South Of North Wall Of Church
 - 96 Feet East Of Tee In Atherton Street

FREESE & NICHOLS
Consulting Engineers
Fort Worth, Texas

INTERSECTION DETAILS
SCALE 1" = 10'