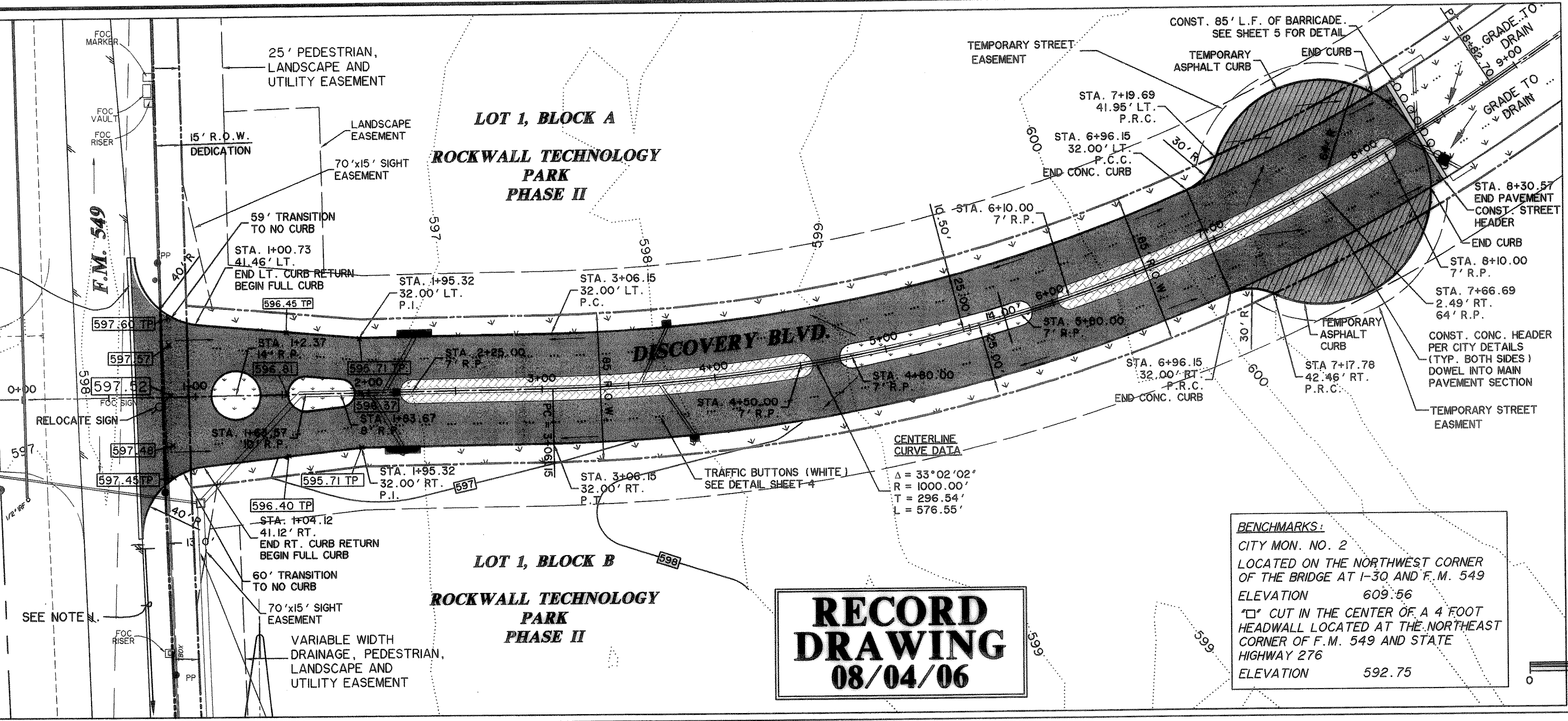


**ROCKWALL TECHNOLOGY PARK
CABINET D, SLIDE 300-392
P.R.R.C.T.**

**ROCKWALL TECHNOLOGY PARK
CABINET D, SLIDE 300-392
P.R.R.C.T.**



LEGEND

- * 4000 PSI. CONC. PAVING
- TEMPORARY NON-REINF. CONCRETE
- BRICK PAVING
- LANDSCAPING

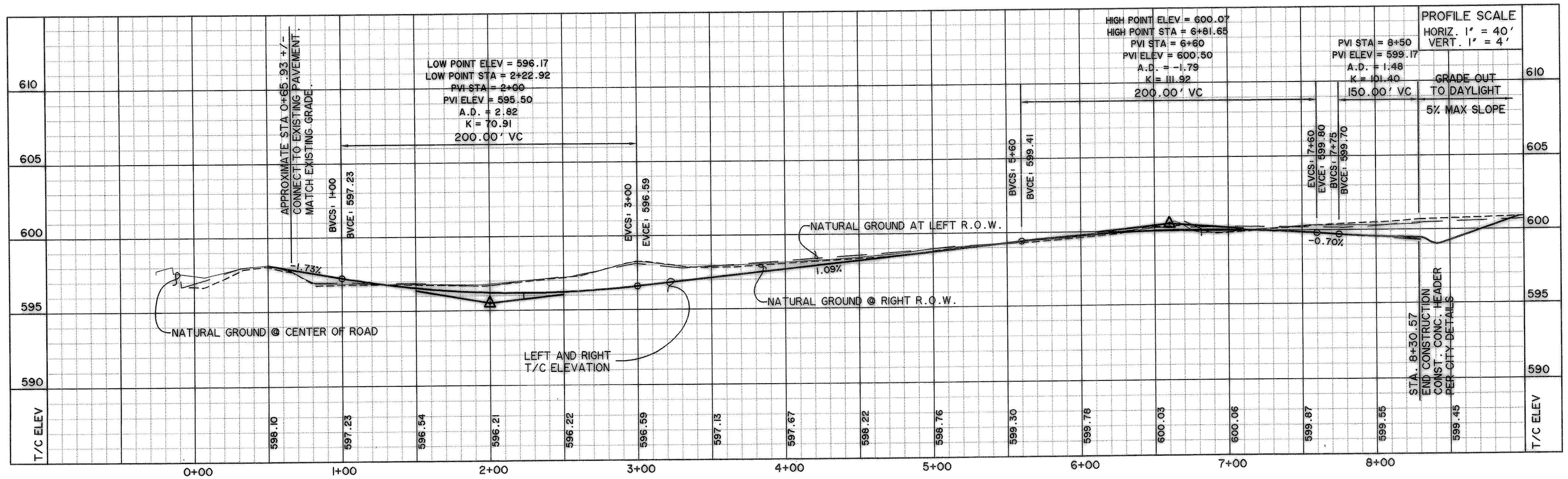
→ DIRECTION OF FLOW

* NOTE: MIN 6 SACK FOR MACHINE POUR AND 6.5 SACK FOR HAND POUR.

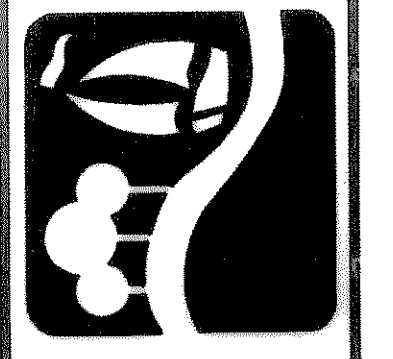
**RECORD
DRAWING
08/04/06**

BENCHMARKS:
CITY MON. NO. 2
LOCATED ON THE NORTHWEST CORNER
OF THE BRIDGE AT I-30 AND F.M. 549
ELEVATION 609.56
"C" CUT IN THE CENTER OF A 4 FOOT
HEADWALL LOCATED AT THE NORTHEAST
CORNER OF F.M. 549 AND STATE
HIGHWAY 276
ELEVATION 592.75

NOTES:
1. AT THE TIME OF DEVELOPMENT IN THE PARK, USER SHALL CONSTRUCT A NORTH BOUND DECELERATION LANE PER TXDOT REQUIREMENTS.

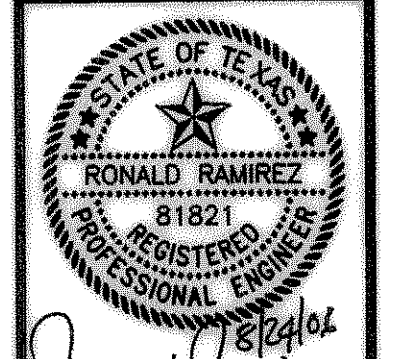


PREPARED BY:
WIA WIER & ASSOCIATES, INC.
ENGINEERS SURVEYORS LAND PLANNERS
4300 BELTWAY PLACE SUITE 130 ARLINGTON, TEXAS 76018 METRO (817)467-7700
1380 U.S. HIGHWAY 287 N. SUITE 101 WANSFIELD, TEXAS 76063 METRO (817)777-8700
6849 ELM STREET FRISCO, TEXAS 75034 METRO (214)387-8000
www.wierassociates.com



**ROCKWALL
TECHNOLOGY
PARK
PHASE II**

**PAVING PLAN
AND PROFILE
DISCOVERY BLVD.**



COPYRIGHT ©
WIER & ASSOCIATES, INC.
LAST SHEET EDIT
DATE 08-23-2006
WA# 98041
**SHEET NO.
P101**

TIME 10:18 FILE: PAVING1.dwg