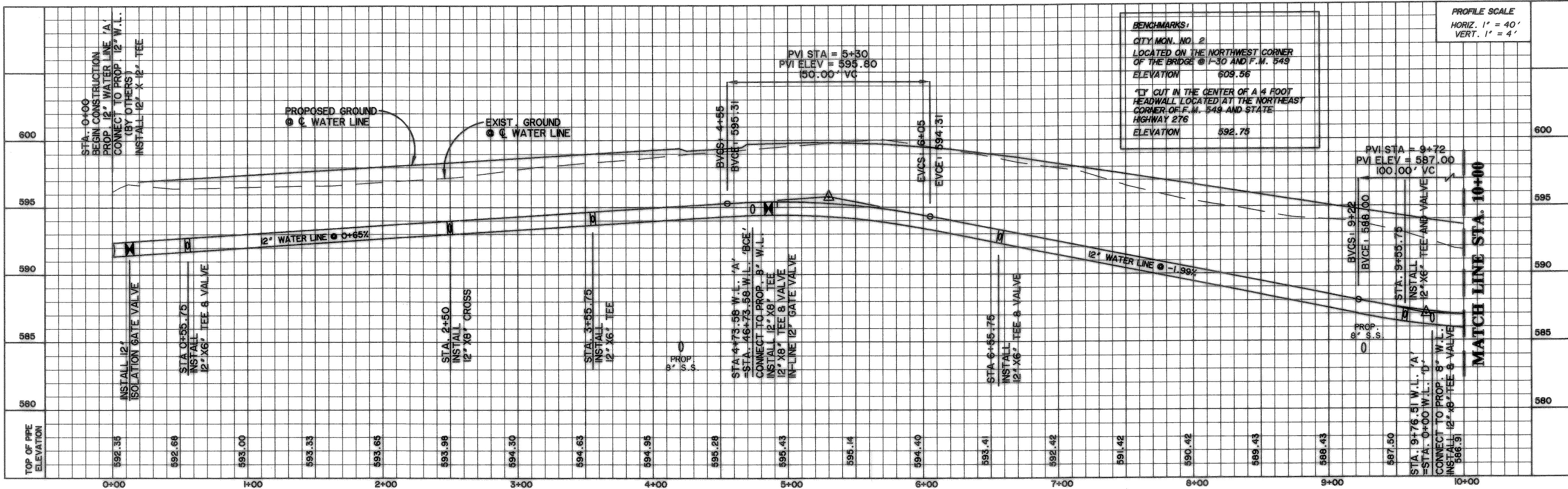
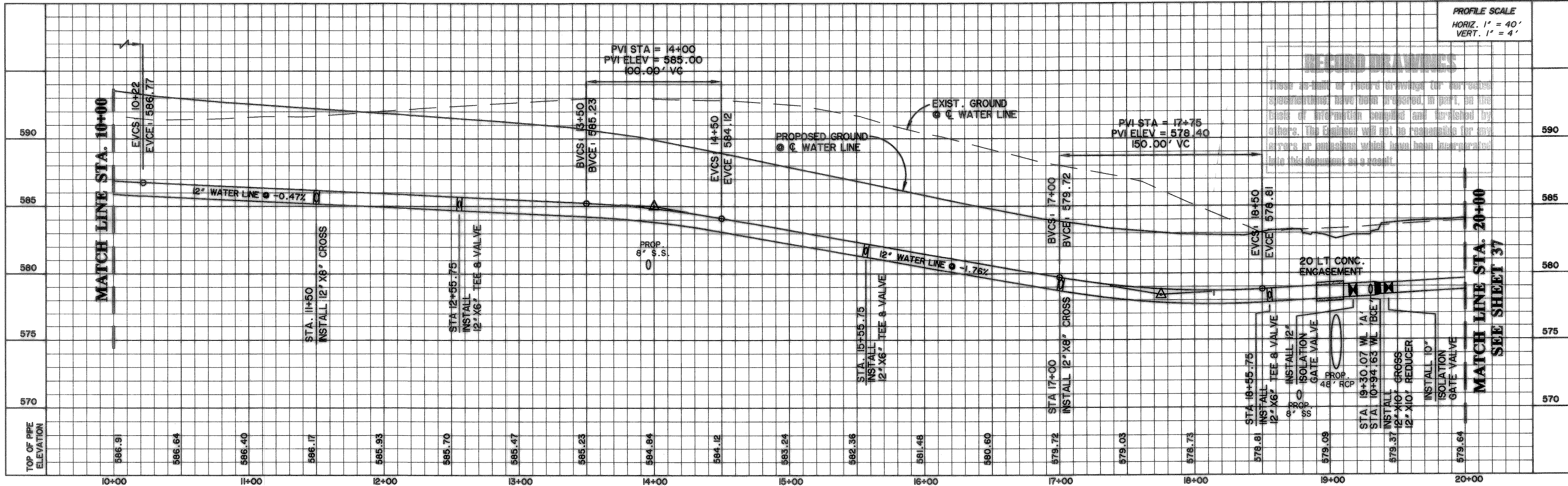


TIME: 17:14 FILE: WATER1.dwg

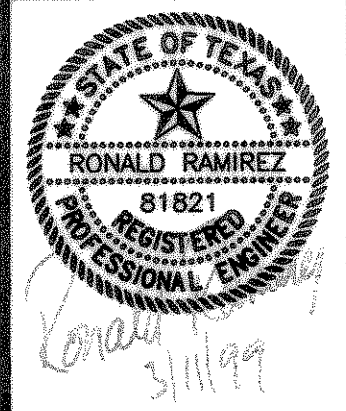


WATER LINE 'A'

BENCHMARKS:
 CITY MON. NO. 2
 LOCATED ON THE NORTHWEST CORNER
 OF THE BRIDGE @ I-30 AND F.M. 549
 ELEVATION 609.56
 1' CUT IN THE CENTER OF A 4 FOOT
 HEADWALL LOCATED AT THE NORTHEAST
 CORNER OF F.M. 549 AND STATE
 HIGHWAY 276
 ELEVATION 592.75

PROFILE SCALE
 HORIZ. 1" = 40'
 VERT. 1" = 4'

PROFILE SCALE
 HORIZ. 1" = 40'
 VERT. 1" = 4'

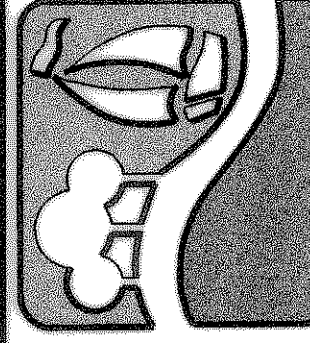


COPYRIGHT ©
 WIER & ASSOCIATES, INC.
 LAST SHEET EDIT
 DATE: 08-10-99
 WAB 98041

SHEET NO.
 36

WATER LINE 'A'
PROFILE
 STA. 0+00 TO STA. 20+00

ROCKWALL
TECHNOLOGY
PARK



PREPARED BY:
WIER & ASSOCIATES, INC.
 ENGINEERS SURVEYORS LAND PLANNERS
 4300 BELTWAY PLACE SUITE 130 ARLINGTON, TEXAS 76010 METRO (817)467-7700
 4108 ANON CENTER RD. SUITE 200 FORT WORTH, TEXAS 76155 METRO (817)385-4457