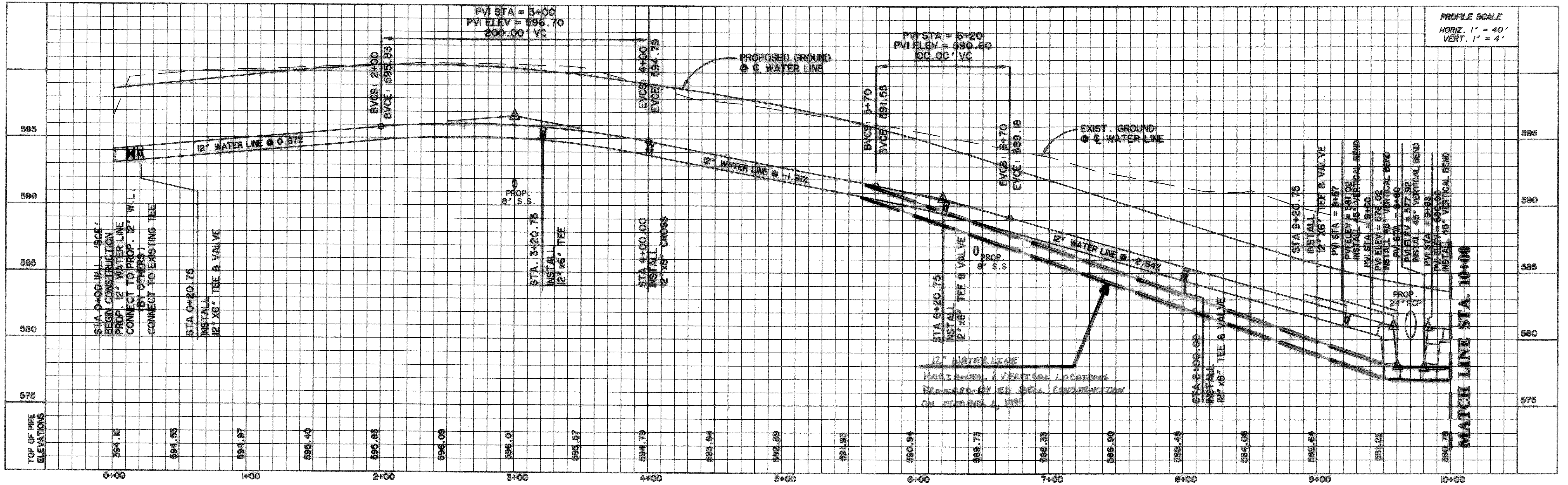
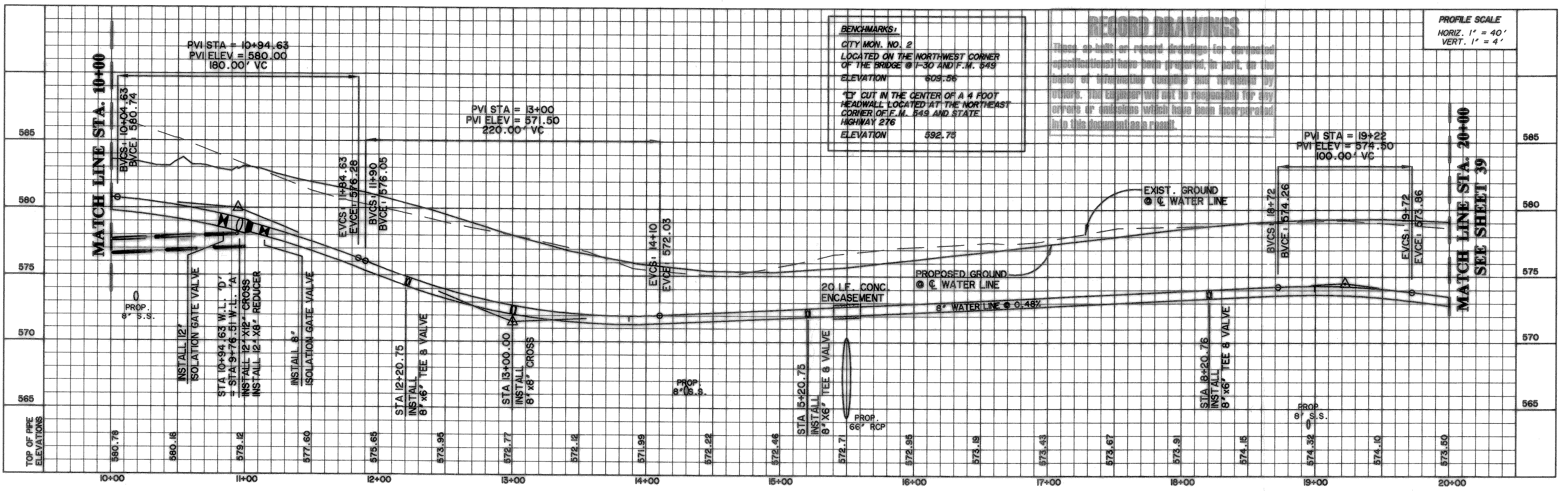


TIME 17:22 FILE: WATERAS.dwg



WATER LINE 'BCE'

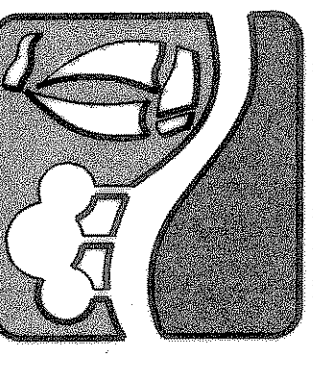
NOTE: INSTALL CONCRETE THRUST BLOCKING @ ALL BENDS PER CITY STANDARDS.



BENCHMARKS:
 CITY MON. NO. 2
 LOCATED ON THE NORTHWEST CORNER
 OF THE BRIDGE @ I-30 AND F.M. 249
 ELEVATION 589.56
 "C" CUT IN THE CENTER OF A 4 FOOT
 HEADWALL LOCATED AT THE NORTHEAST
 CORNER OF F.M. 249 AND STATE
 HIGHWAY 276
 ELEVATION 592.75

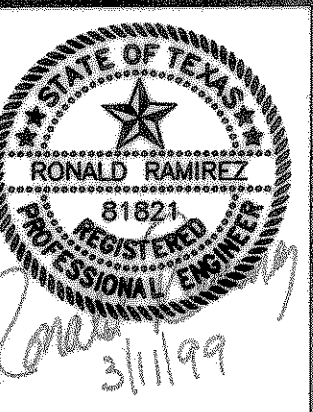
RECORD DRAWINGS:
 These as-built or record drawings for vertical
 alignment have been prepared, in part, on the
 basis of information furnished and prepared by
 others. The Engineer will not be responsible for any
 errors or omissions which have been incorporated
 in this document as a result.

PREPARED BY:
VIA WIER & ASSOCIATES, INC.
 ENGINEERS SURVEYORS LAND PLANNERS
 4300 BELLEVUE PLACE SUITE 130 ARLINGTON, TEXAS 76010 METRO (817) 467-7700
 4100 WEST CHERRY BLVD. SUITE 200 FORT WORTH, TEXAS 76155 METRO (817) 355-9457



**ROCKWALL
 TECHNOLOGY
 PARK**

**WATER LINE 'BCE'
 PROFILES
 STA. 0+00 TO STA. 20+00**



COPYRIGHT ©
 WIER & ASSOCIATES, INC.
 LAST SHEET EDIT
 DATE 08-05-99
 WAB 8804
SHEET NO. 38