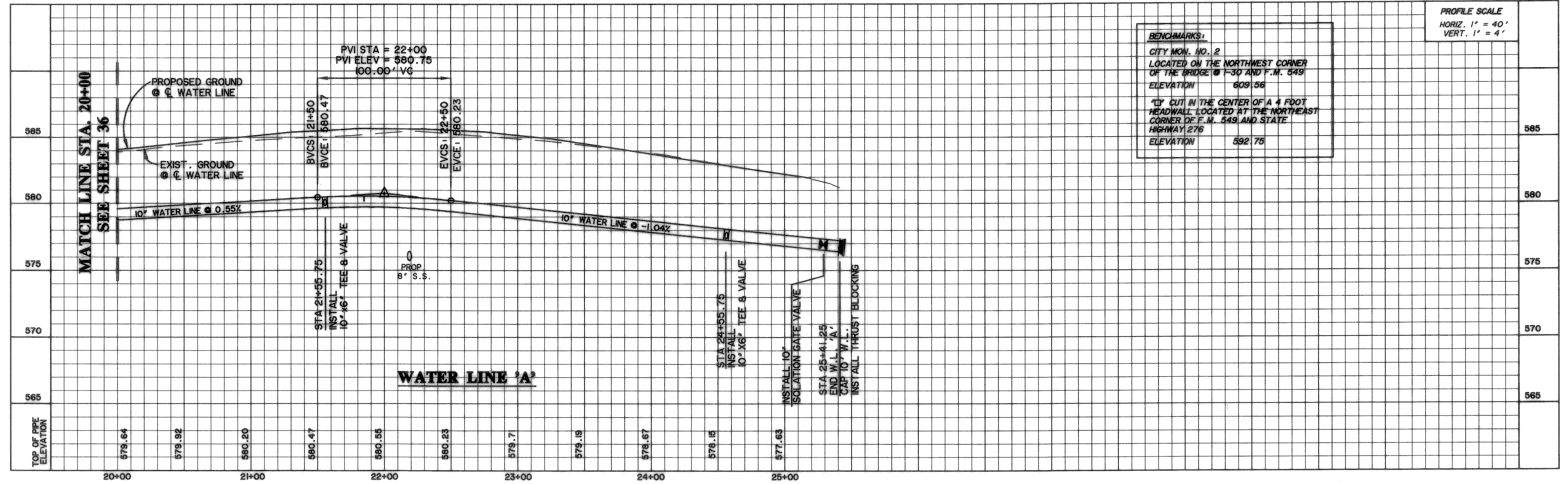


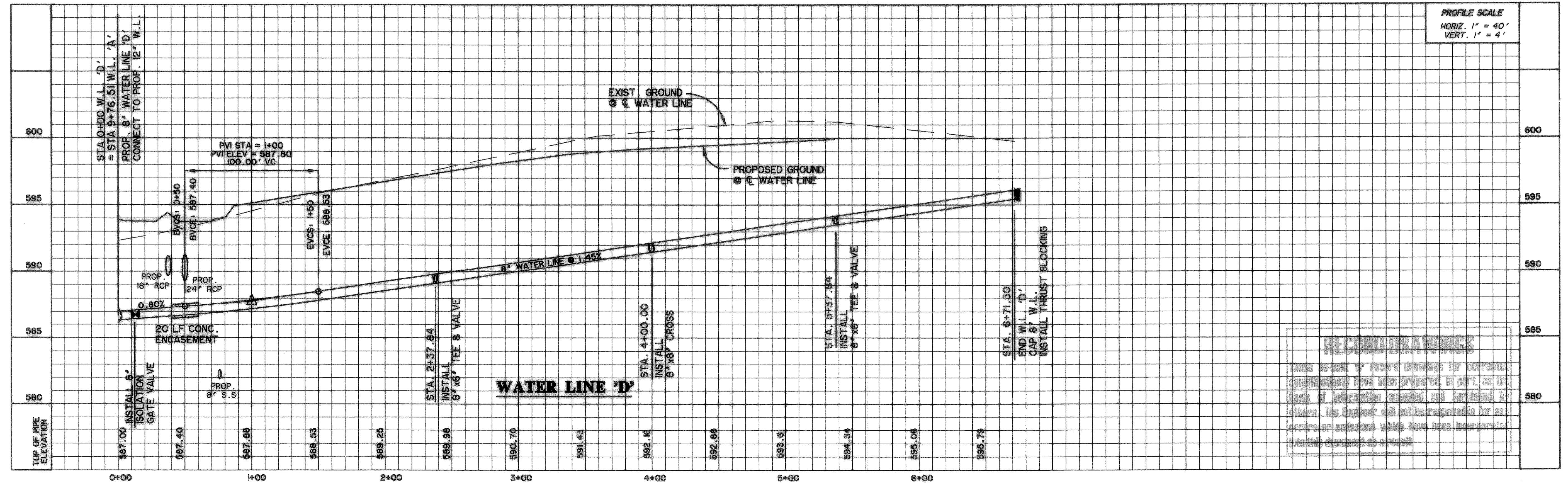
TIME: 17.16 FILE: waterA2.dwg



BENCHMARKS:
CITY MON. NO. 2
LOCATED ON THE NORTHWEST CORNER
OF THE BRIDGE @ T-30 AND F.M. 849
ELEVATION 609.56
"D" CUT IN THE CENTER OF A 4 FOOT
HEADWALL LOCATED AT THE NORTHEAST
CORNER OF F.M. 849 AND STATE
HIGHWAY 276
ELEVATION 592.75

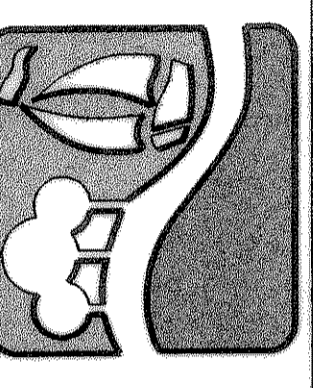
PROFILE SCALE
HORIZ. 1" = 40'
VERT. 1" = 4'

WATER LINES 'A' & 'D'



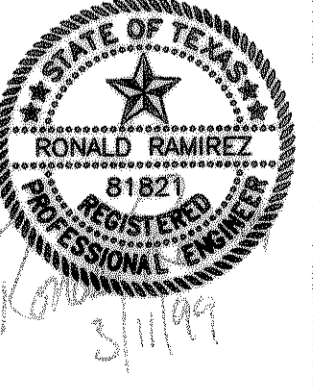
REPRODUCING DRAWINGS
These drawings are prepared by computer operations have been prepared in part, on the basis of information submitted and furnished by others. The Engineer will not be responsible for any errors or omissions which have been incorporated in this document as a result.

PREPARED BY:
WIER & ASSOCIATES, INC.
ENGINEERS SURVEYORS LAND PLANNERS
4300 BELWAY PLACE SUITE 130 ARLINGTON, TEXAS 76010 METRO (817)467-7700
4108 AMN CREEK BLVD. SUITE 200 FORT WORTH, TEXAS 76155 METRO (817)355-4437



ROCKWALL TECHNOLOGY PARK

WATER LINE PROFILES
STA. 20+00 TO STA. 25+41.24
STA. 0+00 TO STA. 6+71.50



COPYRIGHT ©
WIER & ASSOCIATES, INC.
LAST SHEET EDIT
DATE: 05-10-99
WA# 98041
SHEET NO. 37